

Anti-Chaperonin Containing TCP1 Subunit 2 Recombinant Rabbit Monoclonal Antibody



Catalog #: 3121

Aliases

CCT2; Chaperonin Containing TCP1 Subunit 2; Cctb; Chaperonin Containing TCP1, Subunit 2 (Beta); T-Complex Protein 1 Subunit Beta; TCP-1-Beta; CCT-Beta; 99D8.1; Chaperonin Containing T-Complex Polypeptide 1, Beta Subunit; Chaperonin Containing T-Complex Polypeptide 1, Subunit 2; Epididymis Secretory Sperm Binding Protein Li 100n; T-Complex Protein 1, Beta Subunit; HEL-S-100n; PRO1633; CCTB

Background

Gene Name: CCT2

NCBI Gene Entry: [10576](#)

UniProt Entry: [P78371](#)

Application Information

Molecular Weight: Predicted, 57 kDa; observed, 54 kDa

Clonality: Rabbit monoclonal antibody

Clone ID: 24GB4170

Species Reactivity: Human, mouse, rat

Applications Tested: Western blotting (WB), flow cytometry (FCM), immunocytochemistry (IC)

Immunogen

A synthesized peptide derived from human TCP1 beta

Isotype

Rabbit IgG

Storage Buffer

Supplied in PBS (pH 7.4) containing 50% glycerol, and 0.02% sodium azide.

Storage

Store at -20 °C for one year.

Recommended Dilutions

Western Blotting (WB): 1:1,000-1:5,000

Flow Cytometry (FCM): 1:2,000

Immunocytochemistry (IC): 1:100-1:1,000

SUPPORT

SUPPORT@GENUINBIOTECH.COM
TEL: +1-540-855-7041

ORDERS

SALES@GENUINBIOTECH.COM
FAX: +1-540-855-7041

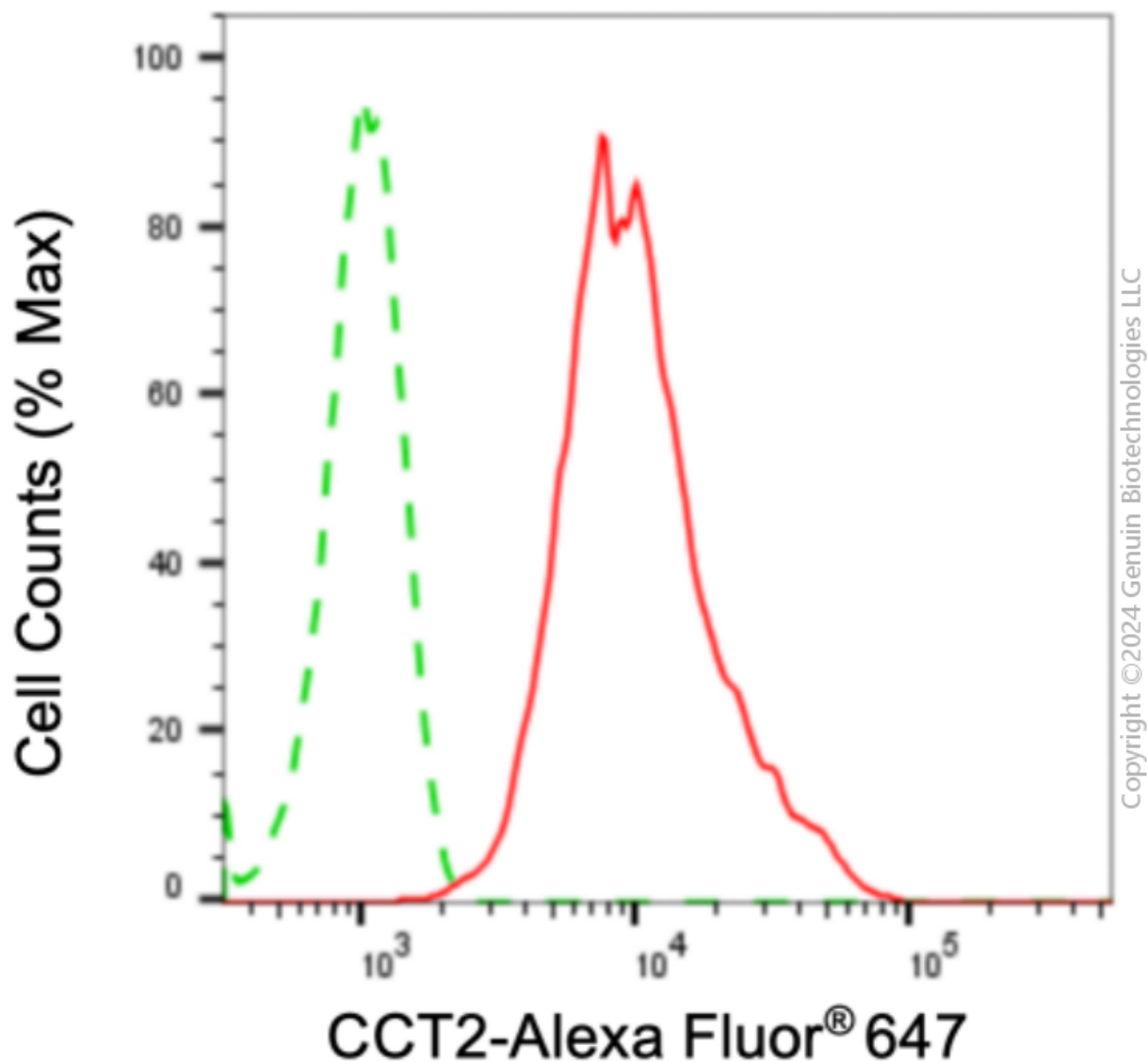
WWW.GENUINBIOTECH.COM

Anti-Chaperonin Containing TCP1 Subunit 2 Recombinant Rabbit Monoclonal Antibody

PAGE 2

Note: This product is for research use only.

Validation Data



Flow cytometric analysis of CCT2 expression in HepG2 cells using anti-CCT2 antibody (Cat#3121, 1:2,000). Green, isotype control; red, CCT2.

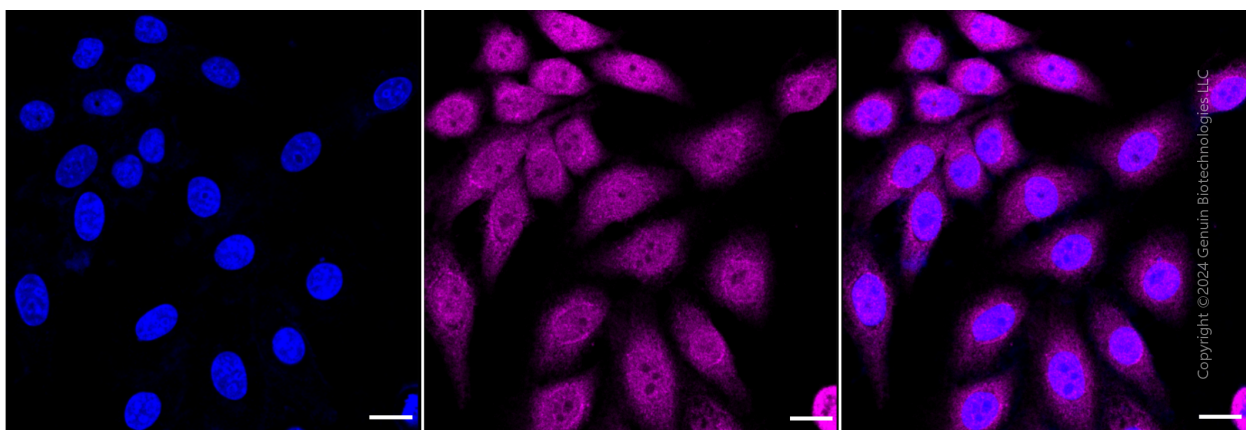
SUPPORT

SUPPORT@GENUINBIOTECH.COM
TEL: +1-540-855-7041

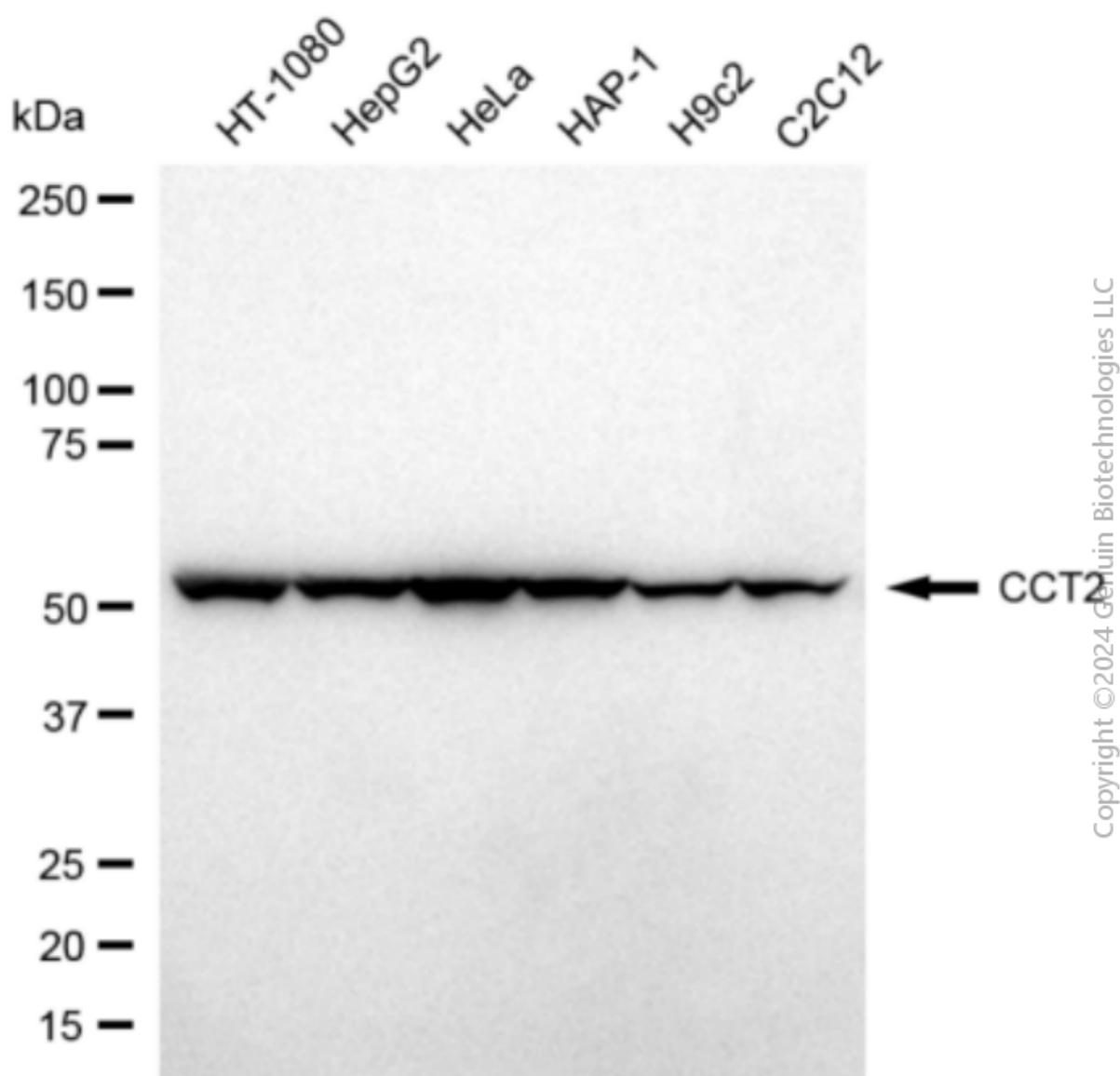
ORDERS

SALES@GENUINBIOTECH.COM
FAX: +1-540-855-7041

WWW.GENUINBIOTECH.COM



Immunocytochemical staining of HepG2 cells with anti-CCT2 antibody (Cat#3121, 1:1,000). Nuclei were stained blue with DAPI; CCT2 was stained magenta with Alexa Fluor® 647. Images were taken using Leica stellaris 5. Protein abundance based on laser Intensity and smart gain: Medium. Scale bar: 20 μ m.



Western blotting analysis using anti-CCT2 antibody (Cat#3121). Total cell lysates (30 µg) from various cell lines were loaded and separated by SDS-PAGE. The blot was incubated with anti-CCT2 antibody (Cat#3121, 1:5,000) and HRP-conjugated goat anti-rabbit secondary antibody (Cat#201, 1:20,000) respectively. Image was developed using FeQ™ ECL Substrate Kit (Cat#226).