

Anti-Regulator Of Chromosome Condensation 1 Recombinant Rabbit Monoclonal Antibody



Catalog #: 3122

Aliases

RCC1; Regulator Of Chromosome Condensation 1; CHC1; Regulator Of Chromosome Condensation; Cell Cycle Regulatory Protein; Guanine Nucleotide-Releasing Protein; Chromosome Condensation Protein 1; Chromosome Condensation 1; RCC1-I

Background

Gene Name: RCC1

NCBI Gene Entry: [1104](#)

UniProt Entry: [P18754](#)

Application Information

Molecular Weight: Predicted, 45 kDa; observed, 48 kDa

Clonality: Rabbit monoclonal antibody

Clone ID: 24GB4175

Species Reactivity: Human, mouse, rat

Applications Tested: Western blotting (WB), flow cytometry (FCM), immunocytochemistry (IC)

Immunogen

A synthesized peptide derived from human RCC1

Isotype

Rabbit IgG

Storage Buffer

Supplied in PBS (pH 7.4) containing 50% glycerol, and 0.02% sodium azide.

Storage

Store at -20 °C for one year.

Recommended Dilutions

Western Blotting (WB): 1:1,000-1:5,000

Flow Cytometry (FCM): 1:2,000

Immunocytochemistry (IC): 1:100-1:1,000

Note: This product is for research use only.

SUPPORT

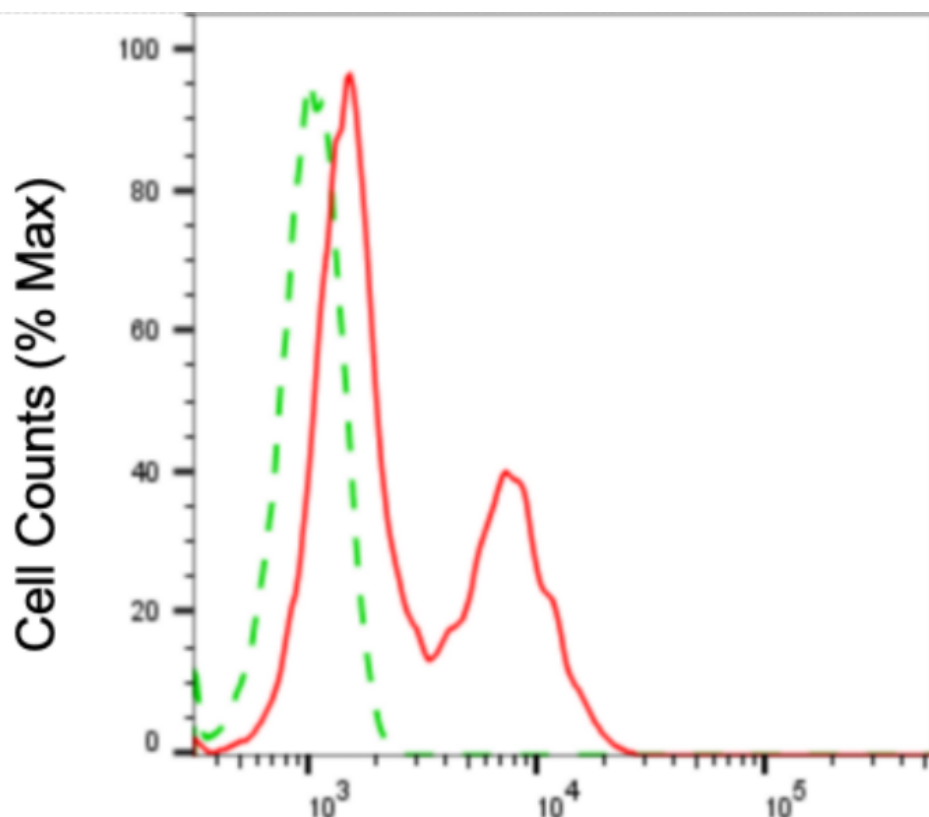
SUPPORT@GENUINBIOTECH.COM
TEL: +1-540-855-7041

ORDERS

SALES@GENUINBIOTECH.COM
FAX: +1-540-855-7041

WWW.GENUINBIOTECH.COM

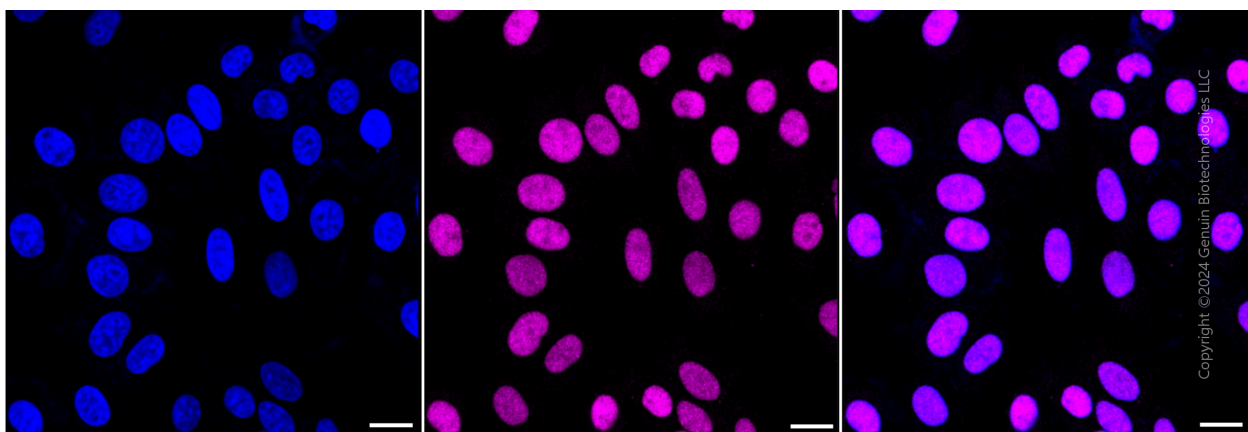
Validation Data



Copyright ©2024 Genuin Biotechnologies LLC

**Regulator of chromosome condensation 1-Alexa Fluor®
647**

Flow cytometric analysis of regulator of chromosome condensation 1 expression in HepG2 cells using anti-regulator of chromosome condensation 1 antibody (Cat#3122, 1:2,000). Green, isotype control; red, regulator of chromosome condensation 1.



Immunocytochemical staining of HepG2 cells with anti-regulator of chromosome condensation 1 antibody (Cat#3122, 1:1,000). Nuclei were stained blue with DAPI; Regulator of chromosome condensation 1 was stained magenta with Alexa Fluor® 647. Images were taken using Leica

SUPPORT

SUPPORT@GENUINBIOTECH.COM
TEL: +1-540-855-7041

ORDERS

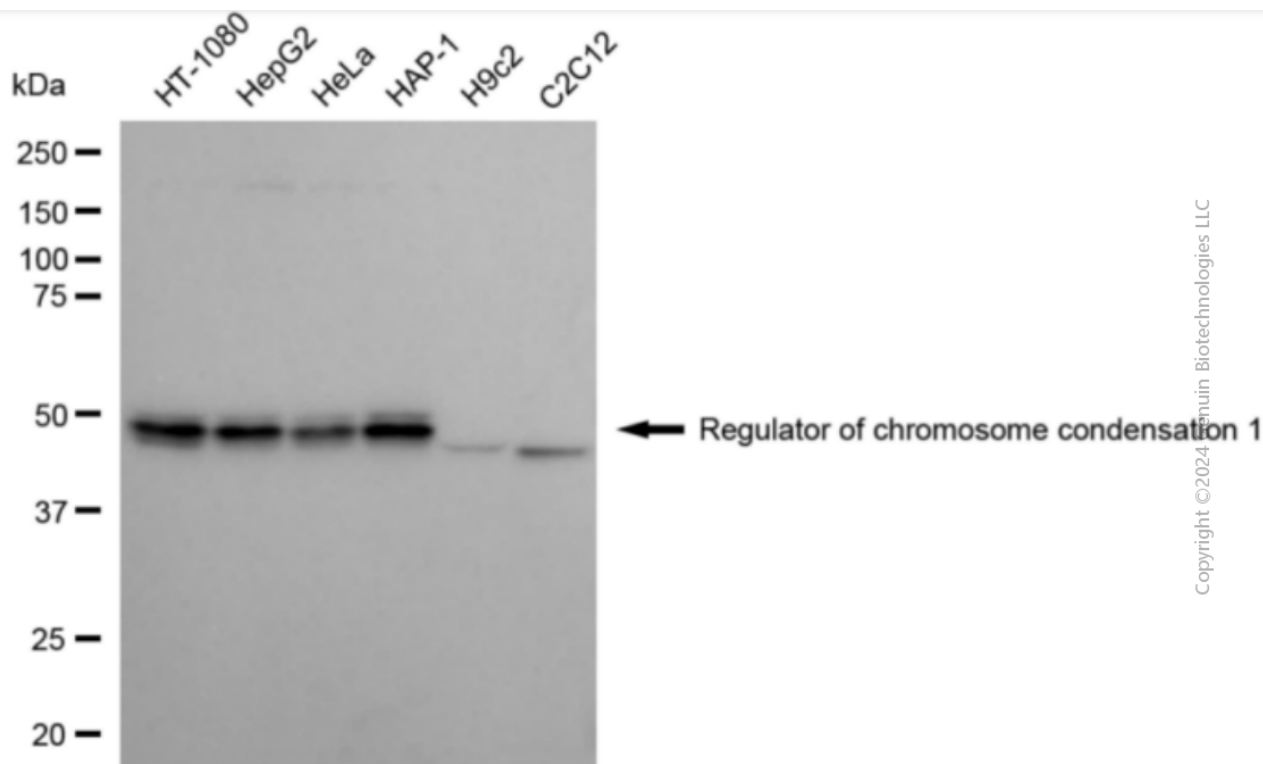
SALES@GENUINBIOTECH.COM
FAX: +1-540-855-7041

WWW.GENUINBIOTECH.COM

Anti-Regulator Of Chromosome Condensation 1 Recombinant Rabbit Monoclonal Antibody

PAGE 3

stellaris 5. Protein abundance based on laser Intensity and smart gain: Medium. Scale bar: 20 μ m.



Western blotting analysis using anti-regulator of chromosome condensation 1 antibody (Cat#3122). Total cell lysates (30 μ g) from various cell lines were loaded and separated by SDS-PAGE. The blot was incubated with anti-regulator of chromosome condensation 1 antibody (Cat#3122, 1:5,000) and HRP-conjugated goat anti-rabbit secondary antibody (Cat#201, 1:20,000) respectively. Image was developed using FeQ™ ECL Substrate Kit (Cat#226).

SUPPORT

SUPPORT@GENUINBIOTECH.COM
TEL: +1-540-855-7041

ORDERS

SALES@GENUINBIOTECH.COM
FAX: +1-540-855-7041

WWW.GENUINBIOTECH.COM