

# Anti-Paired Like Homeodomain 3 Recombinant Rabbit Monoclonal Antibody



**Catalog #: 3127**

## Aliases

PITX3; Paired Like Homeodomain 3; Paired-Like Homeodomain Transcription Factor 3; Homeobox Protein PITX3; Pituitary Homeobox 3; ASMD; PTX3; Anterior Segment Mesenchymal Dysgenesis; Paired-Like Homeodomain 3; CTRCT11; ASGD1; CTPP4; ASOD

## Background

Gene Name: PITX3

NCBI Gene Entry: [5309](#)

UniProt Entry: [O75364](#)

## Application Information

Molecular Weight: Predicted, 32 kDa; observed, 32 kDa

Clonality: Rabbit monoclonal antibody

Clone ID: 24GB4200

Species Reactivity: Human, mouse, rat

Applications Tested: Western blotting (WB), flow cytometry (FCM), immunocytochemistry (IC)

## Immunogen

A synthesized peptide derived from human PITX3

## Isotype

Rabbit IgG

## Storage Buffer

Supplied in PBS (pH 7.4) containing 50% glycerol, and 0.02% sodium azide.

## Storage

Store at -20 °C for one year.

## Recommended Dilutions

Western Blotting (WB): 1:1,000-1:5,000

Flow Cytometry (FCM): 1:2,000

Immunocytochemistry (IC): 1:100-1:1,000

**Note:** This product is for research use only.

---

### SUPPORT

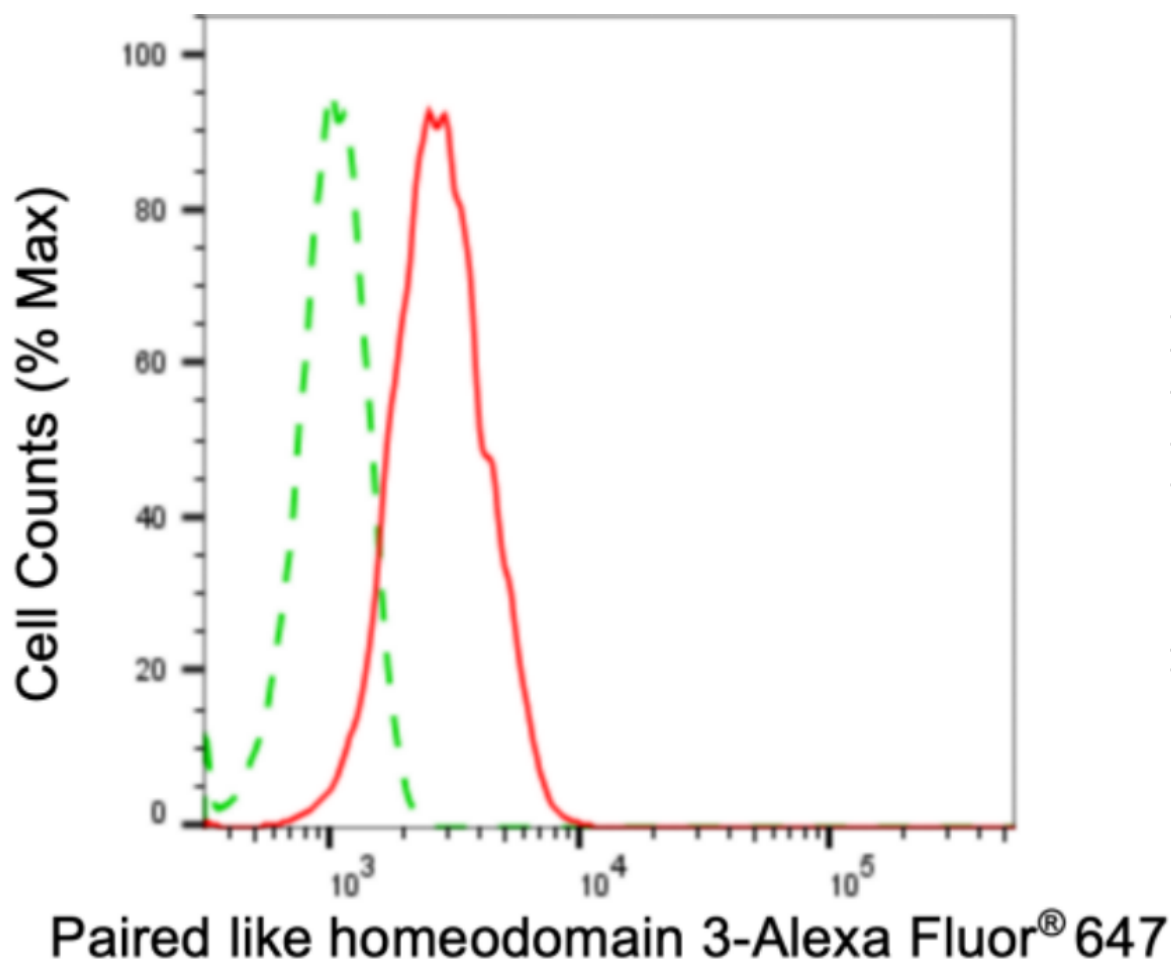
SUPPORT@GENUINBIOTECH.COM  
TEL: +1-540-855-7041

### ORDERS

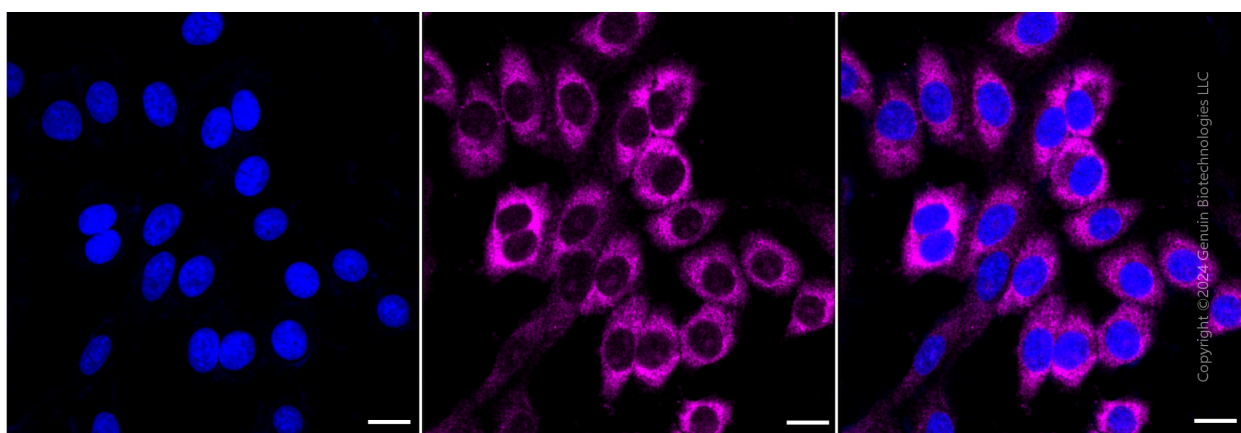
SALES@GENUINBIOTECH.COM  
FAX: +1-540-855-7041

[WWW.GENUINBIOTECH.COM](http://WWW.GENUINBIOTECH.COM)

**Validation Data**



Flow cytometric analysis of paired like homeodomain 3 expression in HepG2 cells using anti-paired like homeodomain 3 antibody (Cat#3127, 1:2,000). Green, isotype control; red, paired like homeodomain 3.



Immunocytochemical staining of HepG2 cells with anti-paired like homeodomain 3 antibody (Cat#3127, 1:1,000). Nuclei were stained blue with DAPI; Paired like homeodomain 3 was stained

**SUPPORT**

SUPPORT@GENUINBIOTECH.COM  
TEL: +1-540-855-7041

**ORDERS**

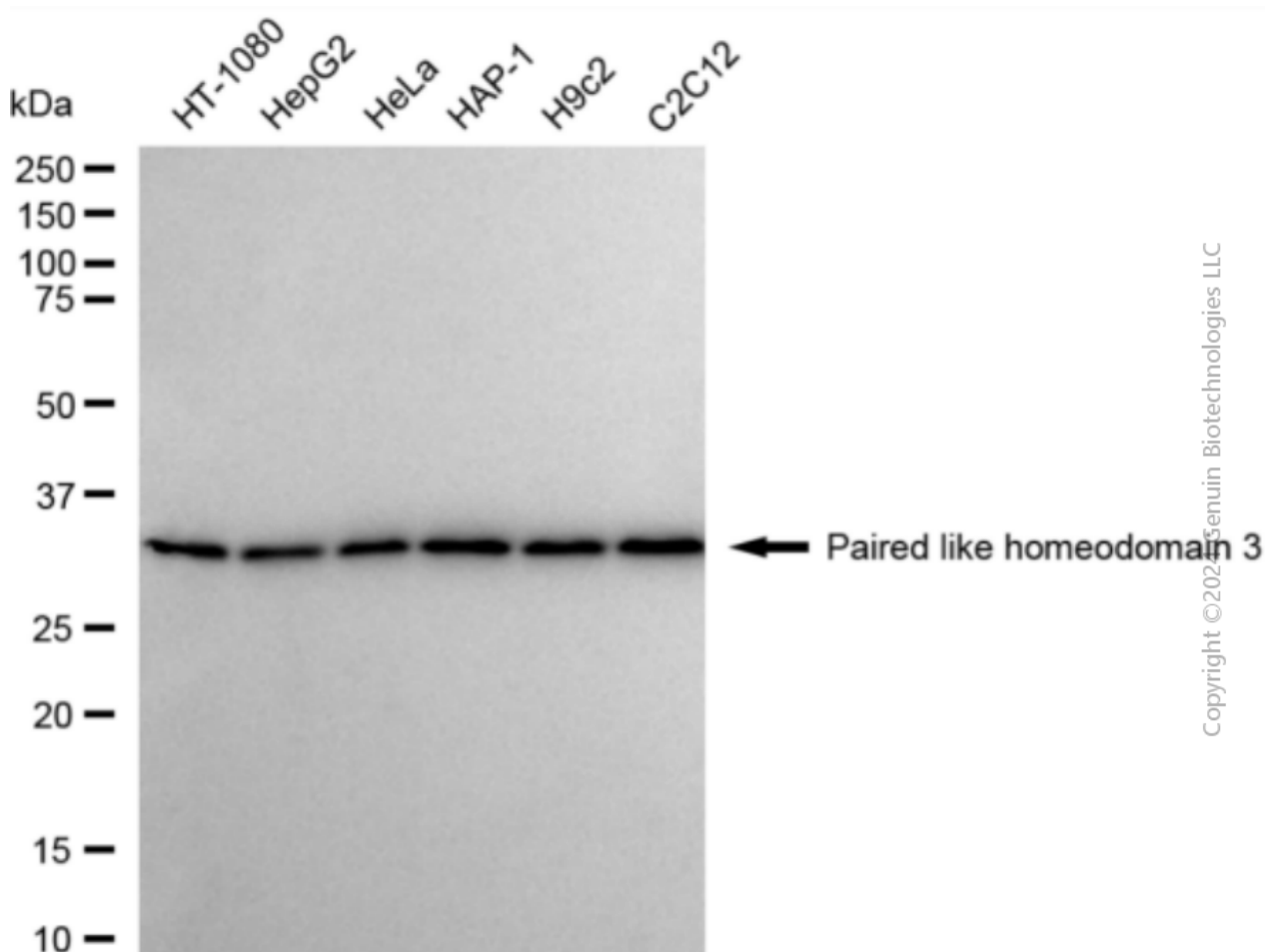
SALES@GENUINBIOTECH.COM  
FAX: +1-540-855-7041

**WWW.GENUINBIOTECH.COM**

## Anti-Paired Like Homeodomain 3 Recombinant Rabbit Monoclonal Antibody

PAGE 3

magenta with Alexa Fluor® 647. Images were taken using Leica stellaris 5. Protein abundance based on laser Intensity and smart gain: Medium. Scale bar: 20 µm.



Western blotting analysis using anti-paired like homeodomain 3 antibody (Cat#3127). Total cell lysates (30 µg) from various cell lines were loaded and separated by SDS-PAGE. The blot was incubated with anti-paired like homeodomain 3 antibody (Cat#3127, 1:5,000) and HRP-conjugated goat anti-rabbit secondary antibody (Cat#201, 1:20,000) respectively. Image was developed using FeQ™ ECL Substrate Kit (Cat#226).

### SUPPORT

SUPPORT@GENUINBIOTECH.COM  
TEL: +1-540-855-7041

### ORDERS

SALES@GENUINBIOTECH.COM  
FAX: +1-540-855-7041

WWW.GENUINBIOTECH.COM