

## Catalog #: 3128

### Aliases

PSMD4; Proteasome 26S Subunit Ubiquitin Receptor, Non-ATPase 4; AF; Rpn10; AF-1; S5A; Proteasome (Prosome, Macropain) 26S Subunit, Non-ATPase, 4; 26S Proteasome Non-ATPase Regulatory Subunit 4; 26S Proteasome Regulatory Subunit S5A; Proteasome 26S Subunit, Non-ATPase 4; Multiubiquitin Chain-Binding Protein; Antisecretory Factor 1; MCB1; ASF; 26S Proteasome Regulatory Subunit RPN10; S5a/Antisecretory Factor Protein; Angiocidin; PUB-R5

### Background

Gene Name: PSMD4

NCBI Gene Entry: [5710](#)

UniProt Entry: [P55036](#)

### Application Information

Molecular Weight: Predicted, 41 kDa; observed, 50 kDa

Clonality: Rabbit monoclonal antibody

Clone ID: 24GB4205

Species Reactivity: Human, mouse, rat

Applications Tested: Western blotting (WB), flow cytometry (FCM), immunocytochemistry (IC)

### Immunogen

A synthesized peptide derived from human PSMD4

### Isotype

Rabbit IgG

### Storage Buffer

Supplied in PBS (pH 7.4) containing 50% glycerol, and 0.02% sodium azide.

### Storage

Store at -20 °C for one year.

### Recommended Dilutions

Western Blotting (WB): 1:1,000-1:5,000

Flow Cytometry (FCM): 1:2,000

Immunocytochemistry (IC): 1:100-1:1,000

---

#### SUPPORT

SUPPORT@GENUINBIOTECH.COM  
TEL: +1-540-855-7041

#### ORDERS

SALES@GENUINBIOTECH.COM  
FAX: +1-540-855-7041

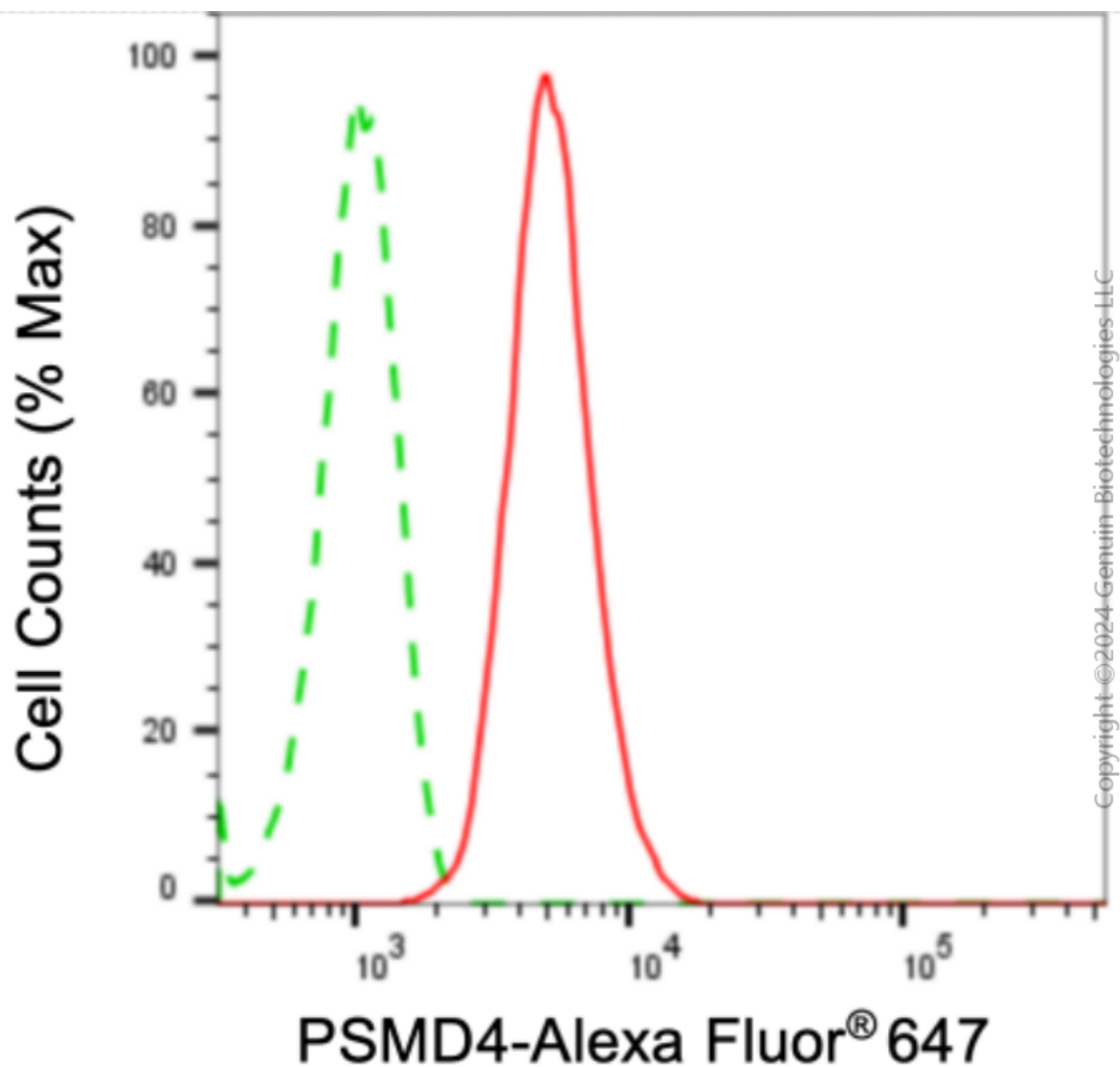
#### WWW.GENUINBIOTECH.COM

# Anti-PSMD4 Recombinant Rabbit Monoclonal Antibody

PAGE 2

**Note:** This product is for research use only.

## Validation Data



Flow cytometric analysis of PSMD4 expression in HepG2 cells using anti-PSMD4 antibody (Cat#3128, 1:2,000). Green, isotype control; red, PSMD4.

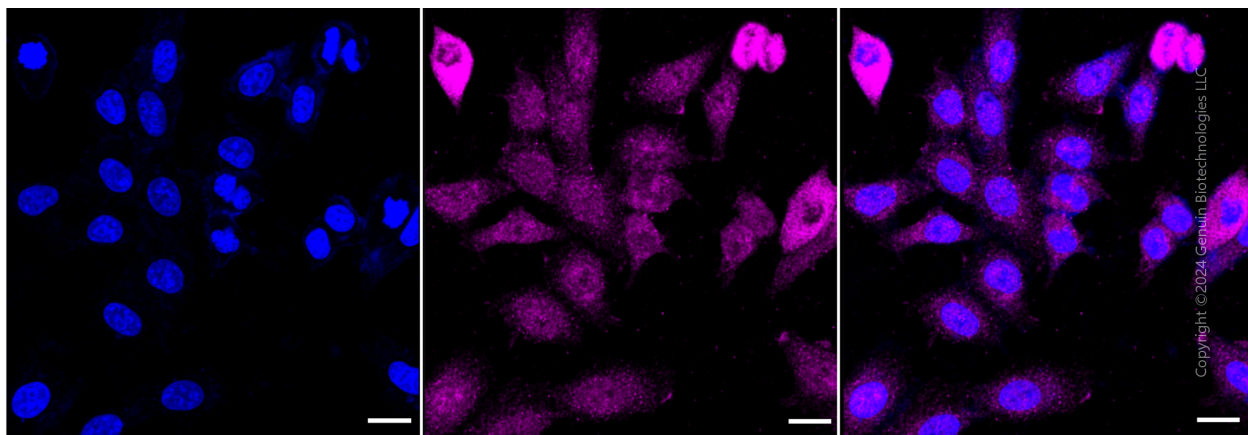
### SUPPORT

SUPPORT@GENUINBIOTECH.COM  
TEL: +1-540-855-7041

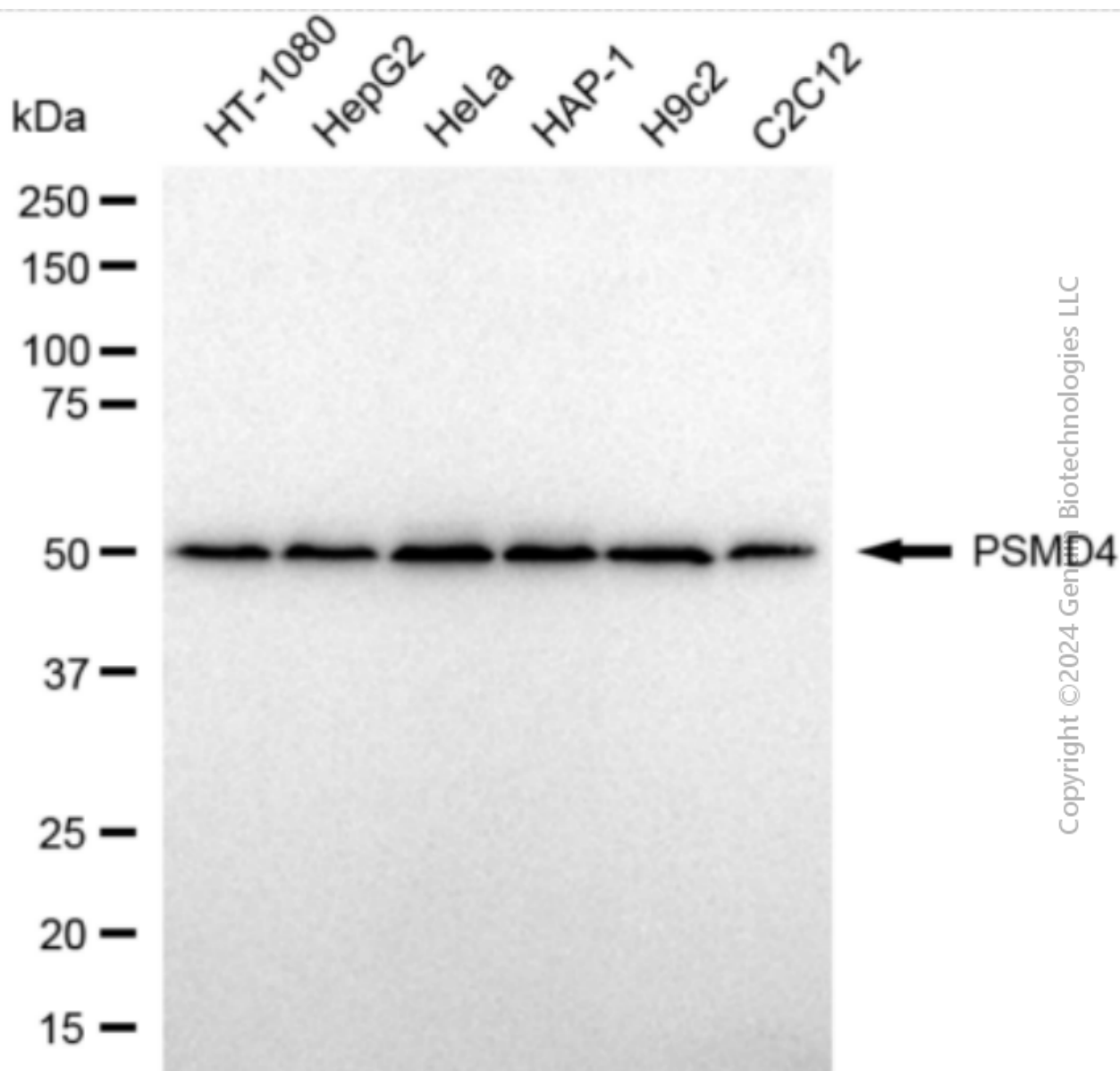
### ORDERS

SALES@GENUINBIOTECH.COM  
FAX: +1-540-855-7041

[WWW.GENUINBIOTECH.COM](http://WWW.GENUINBIOTECH.COM)



Immunocytochemical staining of HepG2 cells with anti-PSMD4 antibody (Cat#3128, 1:1,000). Nuclei were stained blue with DAPI; PSMD4 was stained magenta with Alexa Fluor® 647. Images were taken using Leica stellaris 5. Protein abundance based on laser Intensity and smart gain: Medium. Scale bar: 20  $\mu$ m.



Copyright © 2024 Genium Biotechnologies LLC

Western blotting analysis using anti-PSMD4 antibody (Cat#3128). Total cell lysates (30  $\mu$ g) from various cell lines were loaded and separated by SDS-PAGE. The blot was incubated with anti-PSMD4 antibody (Cat#3128, 1:5,000) and HRP-conjugated goat anti-rabbit secondary antibody (Cat#201, 1:20,000) respectively. Image was developed using FeQ™ ECL Substrate Kit (Cat#226).