

# Anti-SATB Homeobox 2 Recombinant Rabbit Monoclonal Antibody



**Catalog #: 3131**

## Aliases

SATB2; SATB Homeobox 2; KIAA1034; Special AT-Rich Sequence-Binding Protein 2; DNA-Binding Protein SATB2; SATB Family Member 2; FLJ21474; SATB2 Fusion; C2DELq32q33; DEL2Q32Q33; GLSS

## Background

Gene Name: SATB2

NCBI Gene Entry: [23314](#)

UniProt Entry: [Q9UPW6](#)

## Application Information

Molecular Weight: Predicted, 83 kDa; observed, 83 kDa

Clonality: Rabbit monoclonal antibody

Clone ID: 24GB4215

Species Reactivity: Human

Applications Tested: Western blotting (WB), flow cytometry (FCM), immunohistochemistry (IHC)

## Immunogen

A synthesized peptide derived from human SATB2

## Isotype

Rabbit IgG

## Storage Buffer

Supplied in PBS (pH 7.4) containing 50% glycerol, and 0.02% sodium azide.

## Storage

Store at -20 °C for one year.

## Recommended Dilutions

Western Blotting (WB): 1:1,000-1:5,000

Flow Cytometry (FCM): 1:2,000

Immunohistochemistry (IHC): 1:100-1:200

---

### SUPPORT

SUPPORT@GENUINBIOTECH.COM  
TEL: +1-540-855-7041

### ORDERS

SALES@GENUINBIOTECH.COM  
FAX: +1-540-855-7041

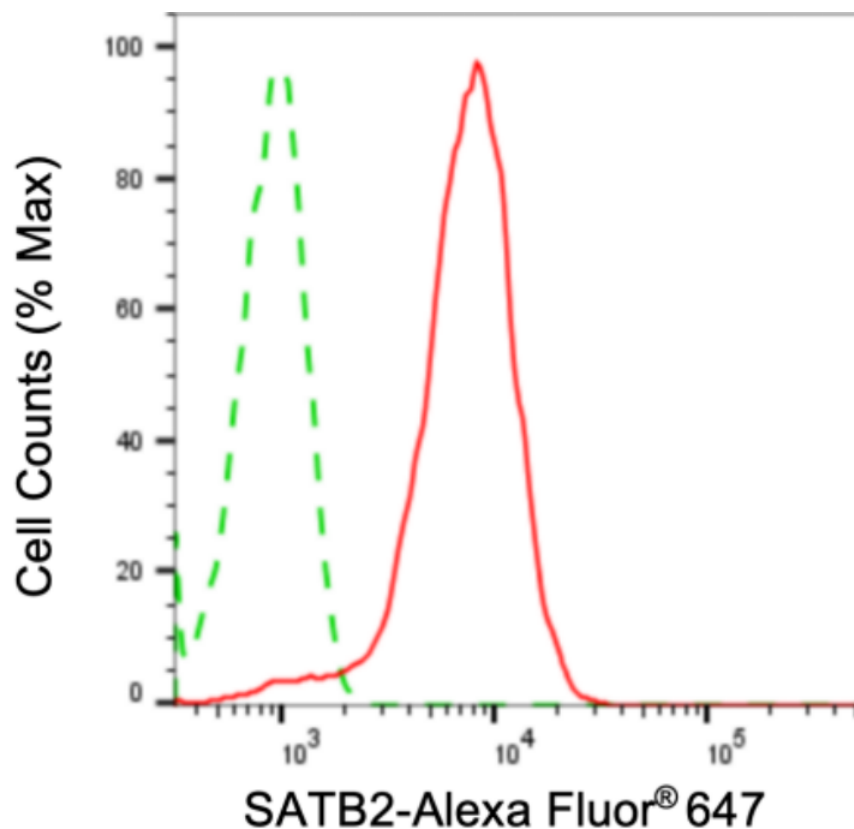
[WWW.GENUINBIOTECH.COM](http://WWW.GENUINBIOTECH.COM)

# Anti-SATB Homeobox 2 Recombinant Rabbit Monoclonal Antibody

PAGE 2

**Note:** This product is for research use only.

## Validation Data



Copyright ©2024 Genuin Biotechnologies LLC

Flow cytometric analysis of SATB2 expression in HeLa cells using anti-SATB2 antibody (Cat#3131, 1:2,000). Green, isotype control; red, SATB2.

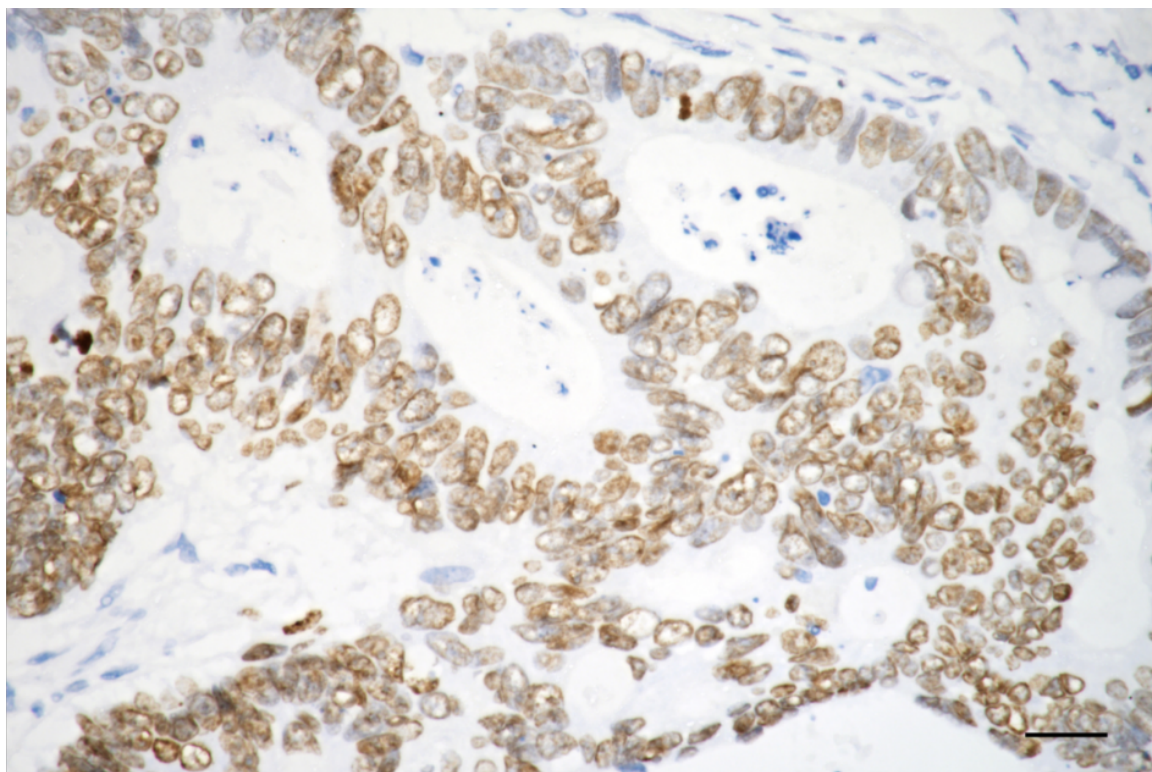
### SUPPORT

SUPPORT@GENUINBIOTECH.COM  
TEL: +1-540-855-7041

### ORDERS

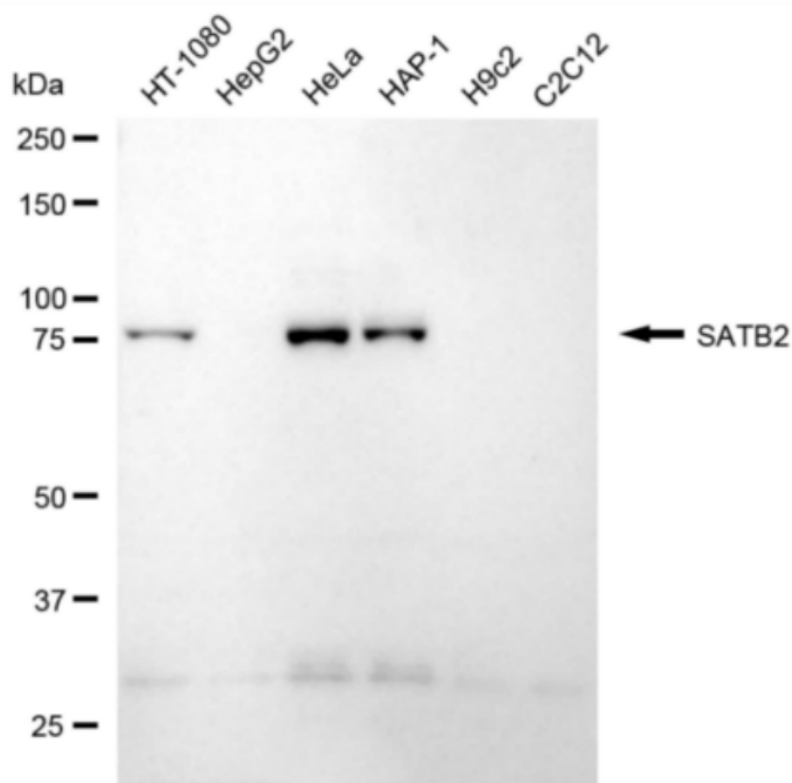
SALES@GENUINBIOTECH.COM  
FAX: +1-540-855-7041

[WWW.GENUINBIOTECH.COM](http://WWW.GENUINBIOTECH.COM)



Copyright ©2025 Genuin Biotechnologies LLC

Immunohistochemistry was performed on paraffin-embedded human sigmoid colon carcinoma using anti-SATB2 antibody (Cat#3131, 1:200). Antigen retrieval was done in sodium citrate buffer (pH 6.0). DAB was used for detection, with hematoxylin counterstaining. Images were acquired using a Nikon Ci-L Plus microscope (40× objective). Scale bar: 25  $\mu$ m.



Copyright ©2024 Genuin Biotechnologies LLC

Western blotting analysis using anti-SATB2 antibody (Cat#3131). Total cell lysates (30  $\mu$ g) from various cell lines were loaded and separated by SDS-PAGE. The blot was incubated with anti-SATB2 antibody (Cat#3131, 1:5,000) and HRP-conjugated goat anti-rabbit secondary antibody (Cat#201, 1:20,000) respectively. Image was developed using FeQ™ ECL Substrate Kit (Cat#226).