

Anti-CRADD Recombinant Rabbit Monoclonal Antibody



Catalog #: 3134

Aliases

CRADD; CASP2 And RIPK1 Domain Containing Adaptor With Death Domain; RAIDD; RIP-Associated ICH1/CED3-Homologous Protein With Death Domain; Death Domain-Containing Protein CRADD; RIP-Associated Protein With A Death Domain; Caspase And RIP Adaptor With Death Domain; Caspase And RIP Adapter With Death Domain; Death Domain Containing Protein CRADD; Death Adaptor Molecule RAIDD; CRADD/LYZ Fusion; MRT34

Background

Gene Name: CRADD

NCBI Gene Entry: [8738](#)

UniProt Entry: [P78560](#)

Application Information

Molecular Weight: Predicted, 23 kDa; observed, 21 kDa

Clonality: Rabbit monoclonal antibody

Clone ID: 24GB4230

Species Reactivity: Human, rat

Applications Tested: Western blotting (WB), immunocytochemistry (IC), flow cytometry (FCM)

Immunogen

A synthesized peptide derived from human RAIDD

Isotype

Rabbit IgG

Storage Buffer

Supplied in PBS (pH 7.4) containing 50% glycerol, and 0.02% sodium azide.

Storage

Store at -20 °C for one year.

Recommended Dilutions

Western Blotting (WB): 1:1,000-1:5,000

Immunocytochemistry (IC): 1:100-1:1,000

Flow Cytometry (FCM): 1:2,000

SUPPORT

SUPPORT@GENUINBIOTECH.COM
TEL: +1-540-855-7041

ORDERS

SALES@GENUINBIOTECH.COM
FAX: +1-540-855-7041

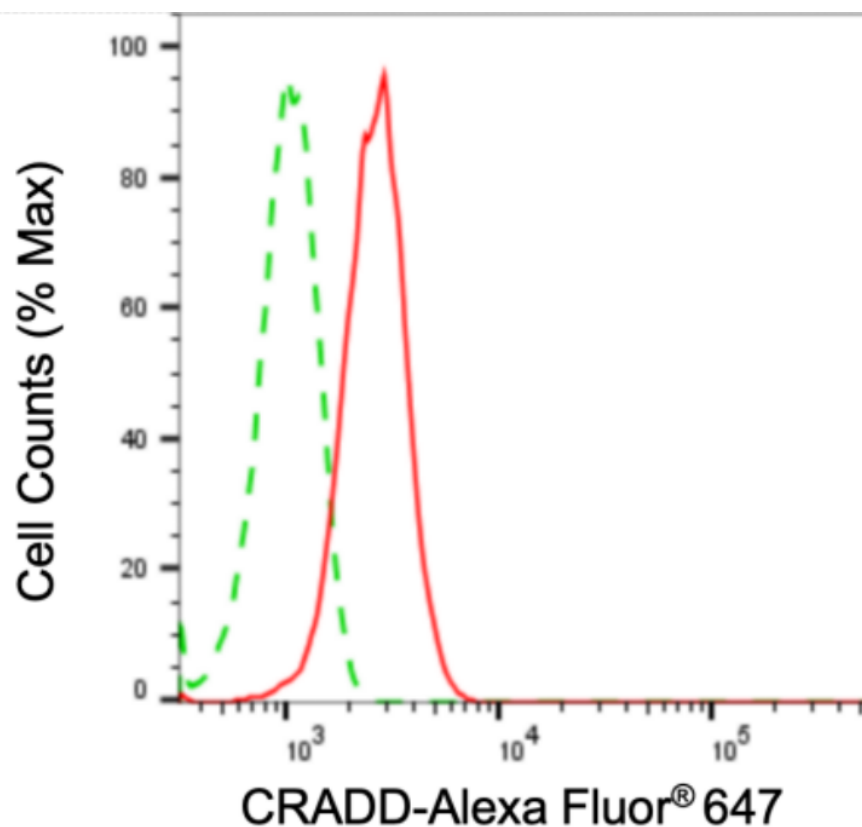
WWW.GENUINBIOTECH.COM

Anti-CRADD Recombinant Rabbit Monoclonal Antibody

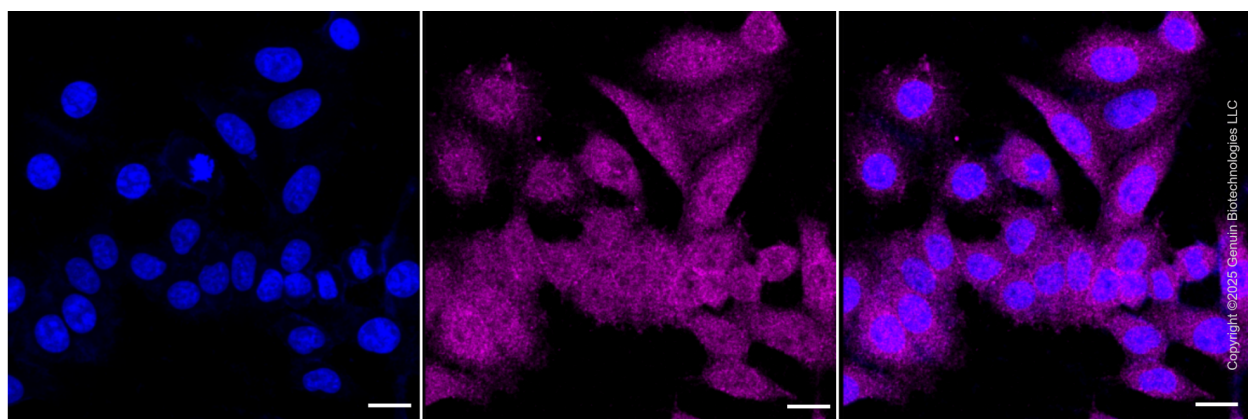
PAGE 2

Note: This product is for research use only.

Validation Data



Flow cytometric analysis of CRADD expression in HepG2 cells using anti-CRADD antibody (Cat#3134, 1:2,000). Green, isotype control; red, CRADD.



Immunocytochemical staining of HepG2 cells with anti-CRADD antibody (Cat#3134, 1:1,000). Nuclei were stained blue with DAPI; CRADD was stained magenta with Alexa Fluor® 647. Images were taken using Leica stellaris 5. Protein abundance based on laser Intensity and smart gain: Medium. Scale bar: 20 µm.

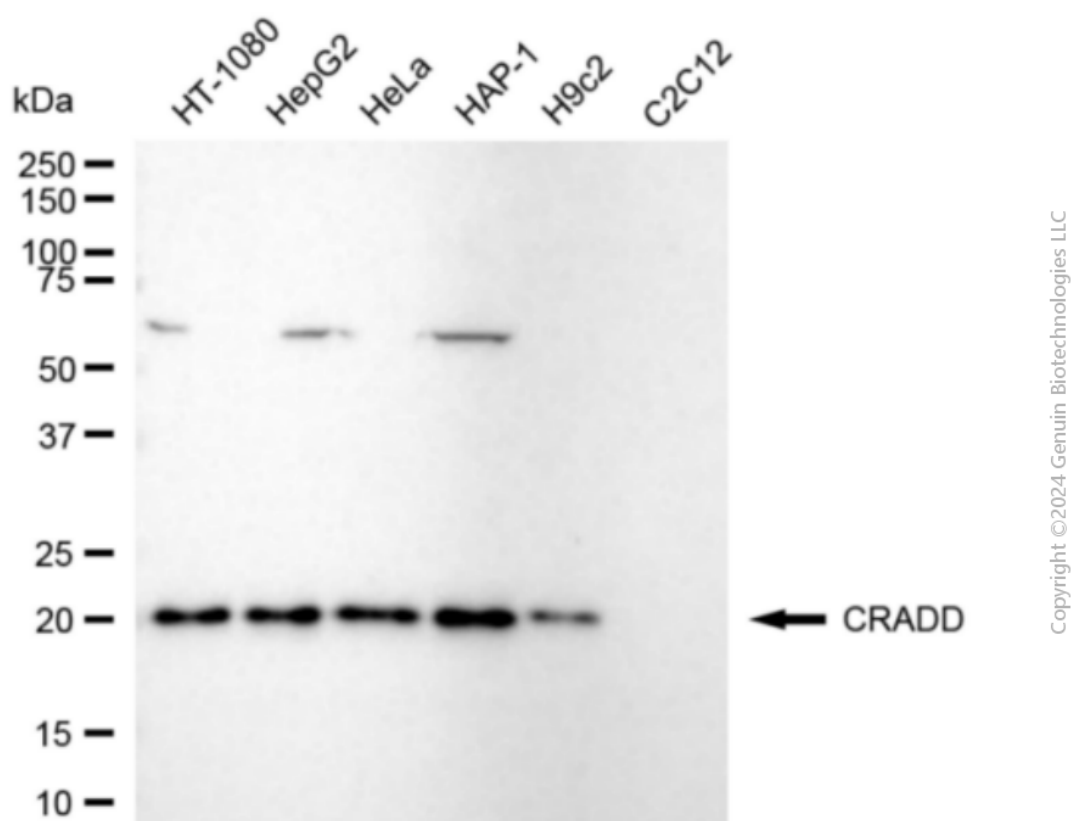
SUPPORT

SUPPORT@GENUINBIOTECH.COM
TEL: +1-540-855-7041

ORDERS

SALES@GENUINBIOTECH.COM
FAX: +1-540-855-7041

WWW.GENUINBIOTECH.COM



Western blotting analysis using anti-CRADD antibody (Cat#3134). Total cell lysates (30 µg) from various cell lines were loaded and separated by SDS-PAGE. The blot was incubated with anti-CRADD antibody (Cat#3134, 1:5,000) and HRP-conjugated goat anti-rabbit secondary antibody (Cat#201, 1:20,000) respectively. Image was developed using FeQ™ ECL Substrate Kit (Cat#226).