

Anti-Phospho-Chk1 (S280) Recombinant Rabbit Monoclonal Antibody



Catalog #: 3136

Aliases

CHEK1; Checkpoint Kinase 1; CHK; Serine/Threonine-Protein Kinase Chk1; Cell Cycle Checkpoint Kinase; CHK1 Checkpoint Homolog; EC 2.7.11.1; Checkpoint, S. Pombe, Homolog Of, 1; CHK1 (Checkpoint, S.Pombe) Homolog; CHK1 Checkpoint Homolog (S. Pombe); Checkpoint Kinase-1; EC 2.7.11; OZEMA21; Chk1-S

Background

Gene Name: CHEK1

NCBI Gene Entry: [1111](#)

UniProt Entry: [O14757](#)

Application Information

Molecular Weight: Predicted, 54 kDa; observed, 54 kDa

Clonality: Rabbit monoclonal antibody

Clone ID: 24GB4240

Species Reactivity: Human

Applications Tested: Western blotting (WB), flow cytometry (FCM), immunocytochemistry (IC)

Immunogen

A synthesized peptide derived from human Phospho-Chk1 (S280)

Isotype

Rabbit IgG

Storage Buffer

Supplied in PBS (pH 7.4) containing 50% glycerol, and 0.02% sodium azide.

Storage

Store at -20 °C for one year.

Recommended Dilutions

Western Blotting (WB): 1:1,000-1:5,000

Flow Cytometry (FCM): 1:2,000

Immunocytochemistry (IC): 1:100-1:1,000

SUPPORT

SUPPORT@GENUINBIOTECH.COM
TEL: +1-540-855-7041

ORDERS

SALES@GENUINBIOTECH.COM
FAX: +1-540-855-7041

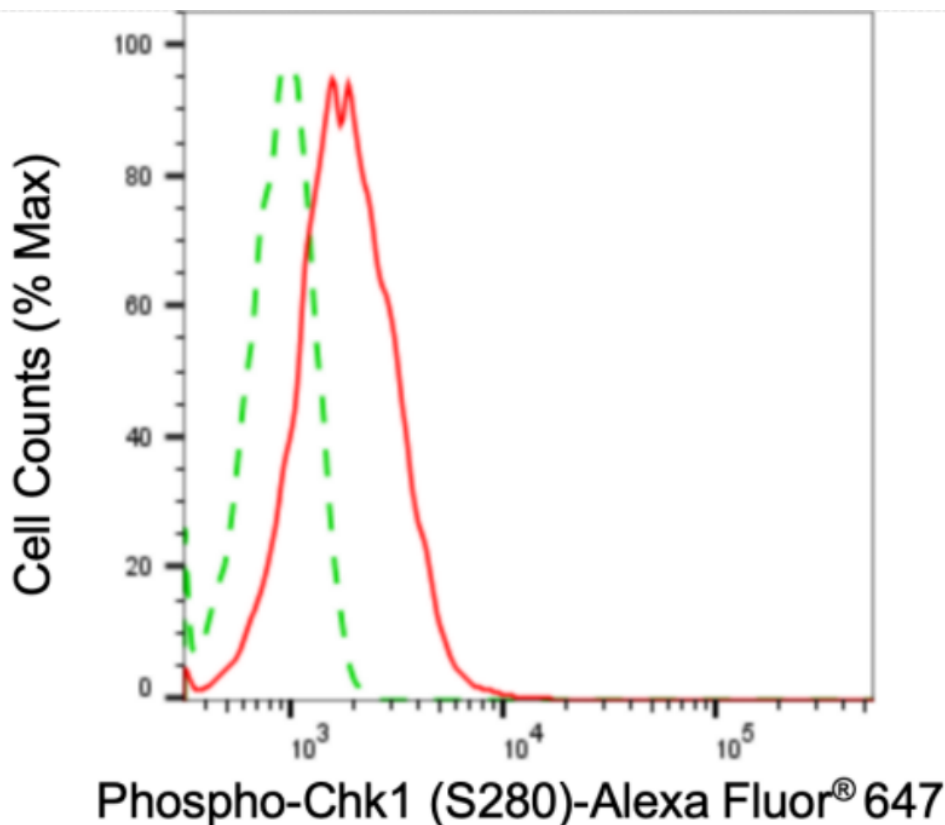
WWW.GENUINBIOTECH.COM

Anti-Phospho-Chk1 (S280) Recombinant Rabbit Monoclonal Antibody

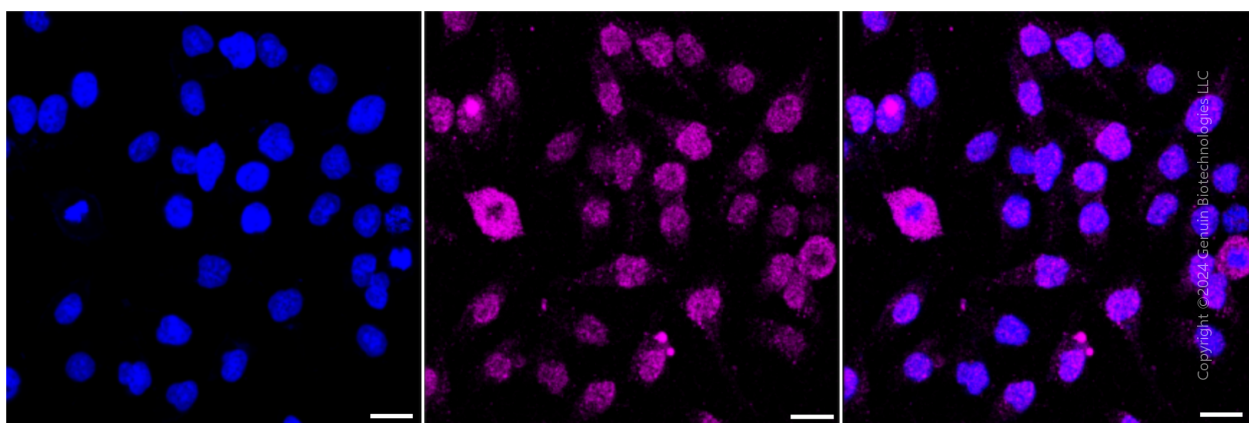
PAGE 2

Note: This product is for research use only.

Validation Data



Flow cytometric analysis of phospho-chk1 (S280) expression in HeLa cells using anti-phospho-chk1 (S280) antibody (Cat#3136, 1:2,000). Green, isotype control; red, phospho-chk1 (S280).



Immunocytochemical staining of HeLa cells with anti-Phospho-Chk1 (S280) antibody (Cat#3136, 1:1,000). Nuclei were stained blue with DAPI; Phospho-Chk1 (S280) was stained magenta with Alexa Fluor® 647. Images were taken using Leica stellaris 5. Protein abundance based on laser Intensity and smart gain: Medium. Scale bar: 20 μ m.

SUPPORT

SUPPORT@GENUINBIOTECH.COM
TEL: +1-540-855-7041

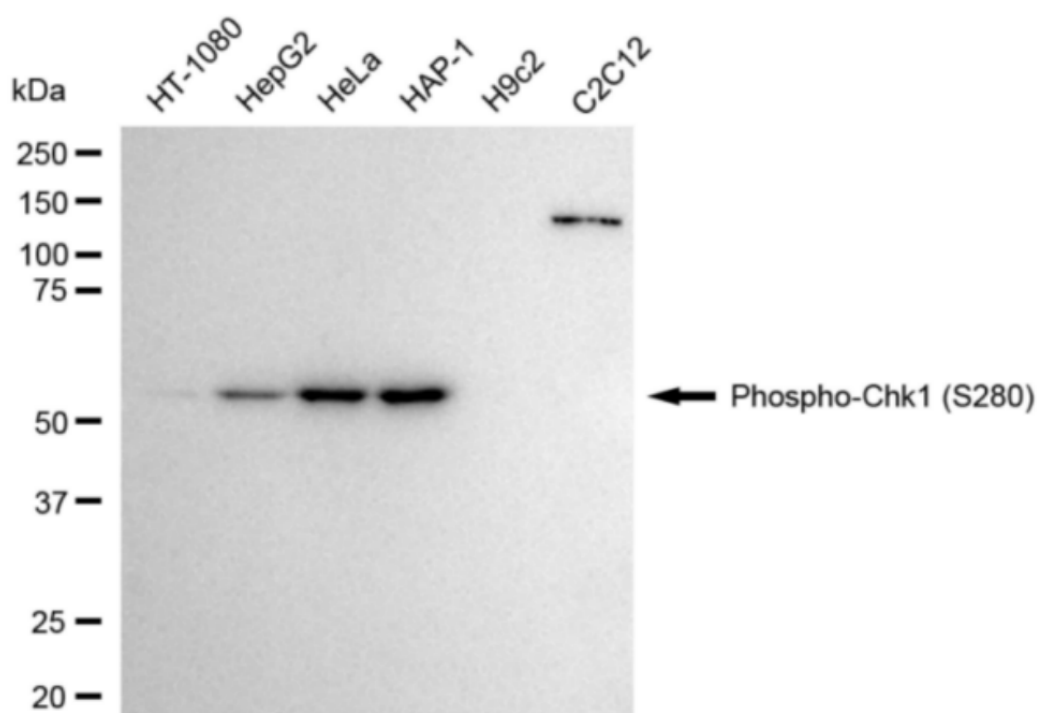
ORDERS

SALES@GENUINBIOTECH.COM
FAX: +1-540-855-7041

WWW.GENUINBIOTECH.COM

Anti-Phospho-Chk1 (S280) Recombinant Rabbit Monoclonal Antibody

PAGE 3



Copyright ©2024 Genuin Biotechnologies LLC

Western blotting analysis using anti-phospho-chk1 (S280) antibody (Cat#3136). Total cell lysates (30 µg) from various cell lines were loaded and separated by SDS-PAGE. The blot was incubated with anti-phospho-chk1 (S280) antibody (Cat#3136, 1:5,000) and HRP-conjugated goat anti-rabbit secondary antibody (Cat#201, 1:20,000) respectively. Image was developed using FeQ™ ECL Substrate Kit (Cat#226).

SUPPORT

SUPPORT@GENUINBIOTECH.COM
TEL: +1-540-855-7041

ORDERS

SALES@GENUINBIOTECH.COM
FAX: +1-540-855-7041

WWW.GENUINBIOTECH.COM