

Anti-Serine/Threonine Kinase 39 Recombinant Rabbit Monoclonal Antibody



Catalog #: 3138

Aliases

STK39; Serine/Threonine Kinase 39; DCHT; SPAK; STE20/SPS1-Related Proline-Alanine-Rich Protein Kinase; Serine/Threonine-Protein Kinase 39; Ste-20-Related Kinase; EC 2.7.11.1; PASK; Serine Threonine Kinase 39 (STE20/SPS1 Homolog, Yeast); Proline-Alanine-Rich STE20-Related Kinase; Small Intestine SPAK-Like Kinase; STE20/SPS1 Homolog (Yeast); Serine Threonine Kinase 39; Ste20-Like Protein Kinase; STE20/SPS1 Homolog; EC 2.7.11

Background

Gene Name: STK39

NCBI Gene Entry: [27347](#)

UniProt Entry: [Q9UEW8](#)

Application Information

Molecular Weight: Predicted, 59 kDa; observed, 68 kDa

Clonality: Rabbit monoclonal antibody

Clone ID: 24GB4250

Species Reactivity: Human, rat

Applications Tested: Western blotting (WB), flow cytometry (FCM), immunocytochemistry (IC)

Immunogen

A synthesized peptide derived from human STK39

Isotype

Rabbit IgG

Storage Buffer

Supplied in PBS (pH 7.4) containing 50% glycerol, and 0.02% sodium azide.

Storage

Store at -20 °C for one year.

Recommended Dilutions

Western Blotting (WB): 1:1,000-1:5,000

Flow Cytometry (FCM): 1:2,000

Immunocytochemistry (IC): 1:100-1:1,000

SUPPORT

SUPPORT@GENUINBIOTECH.COM
TEL: +1-540-855-7041

ORDERS

SALES@GENUINBIOTECH.COM
FAX: +1-540-855-7041

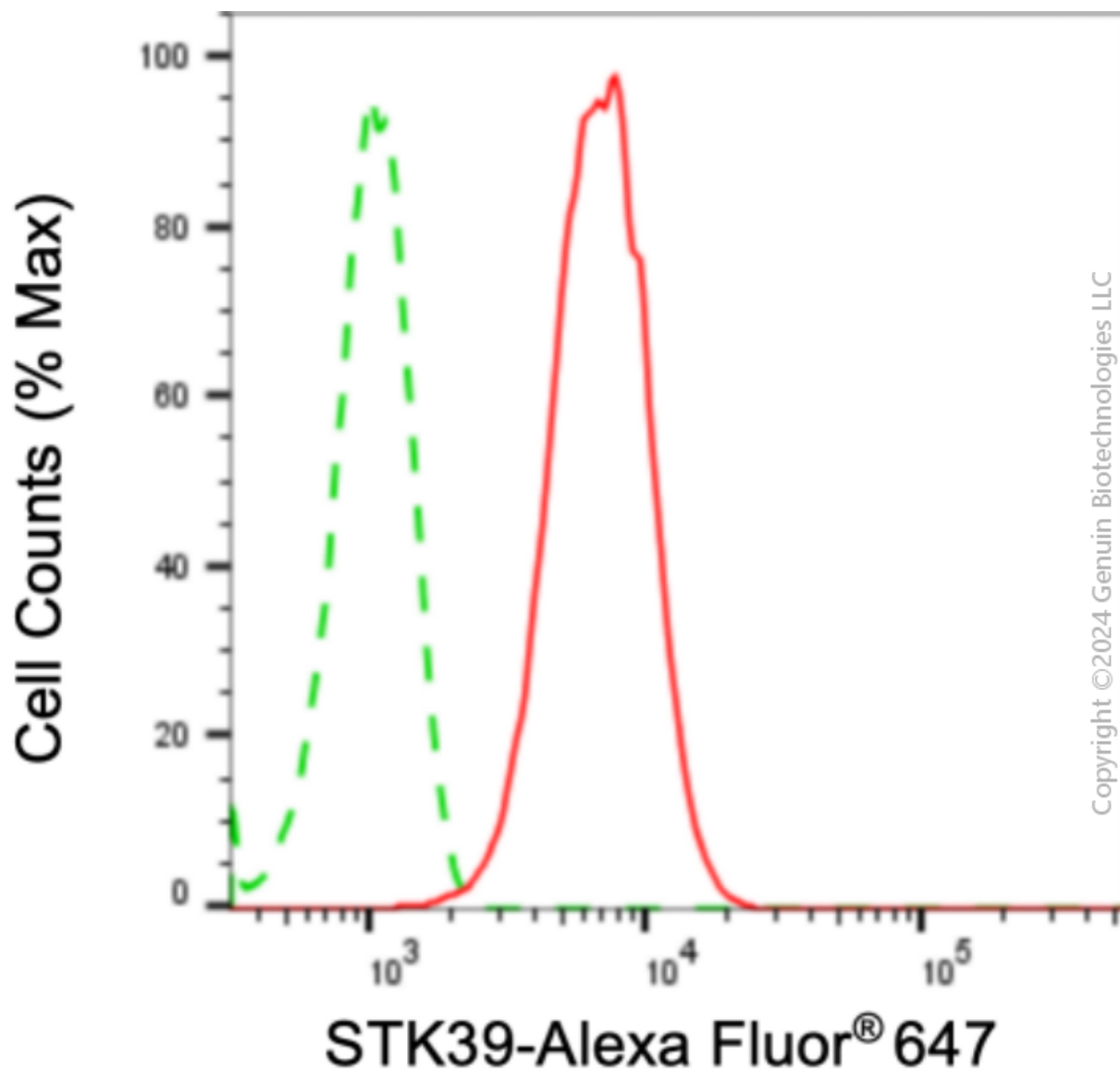
WWW.GENUINBIOTECH.COM

Anti-Serine/Threonine Kinase 39 Recombinant Rabbit Monoclonal Antibody

PAGE 2

Note: This product is for research use only.

Validation Data



Flow cytometric analysis of STK39 expression in HepG2 cells using anti-STK39 antibody (Cat#3138, 1:2,000). Green, isotype control; red, STK39.

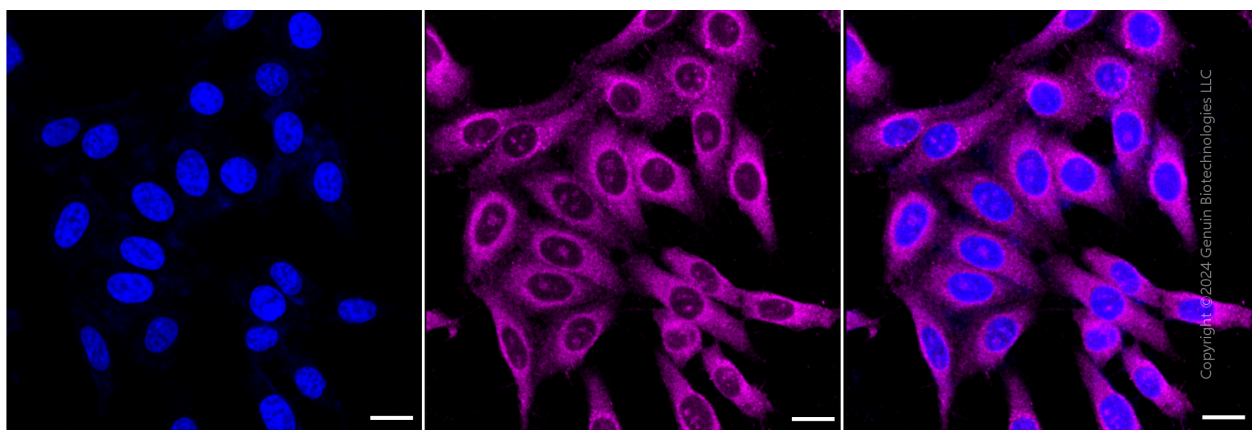
SUPPORT

SUPPORT@GENUINBIOTECH.COM
TEL: +1-540-855-7041

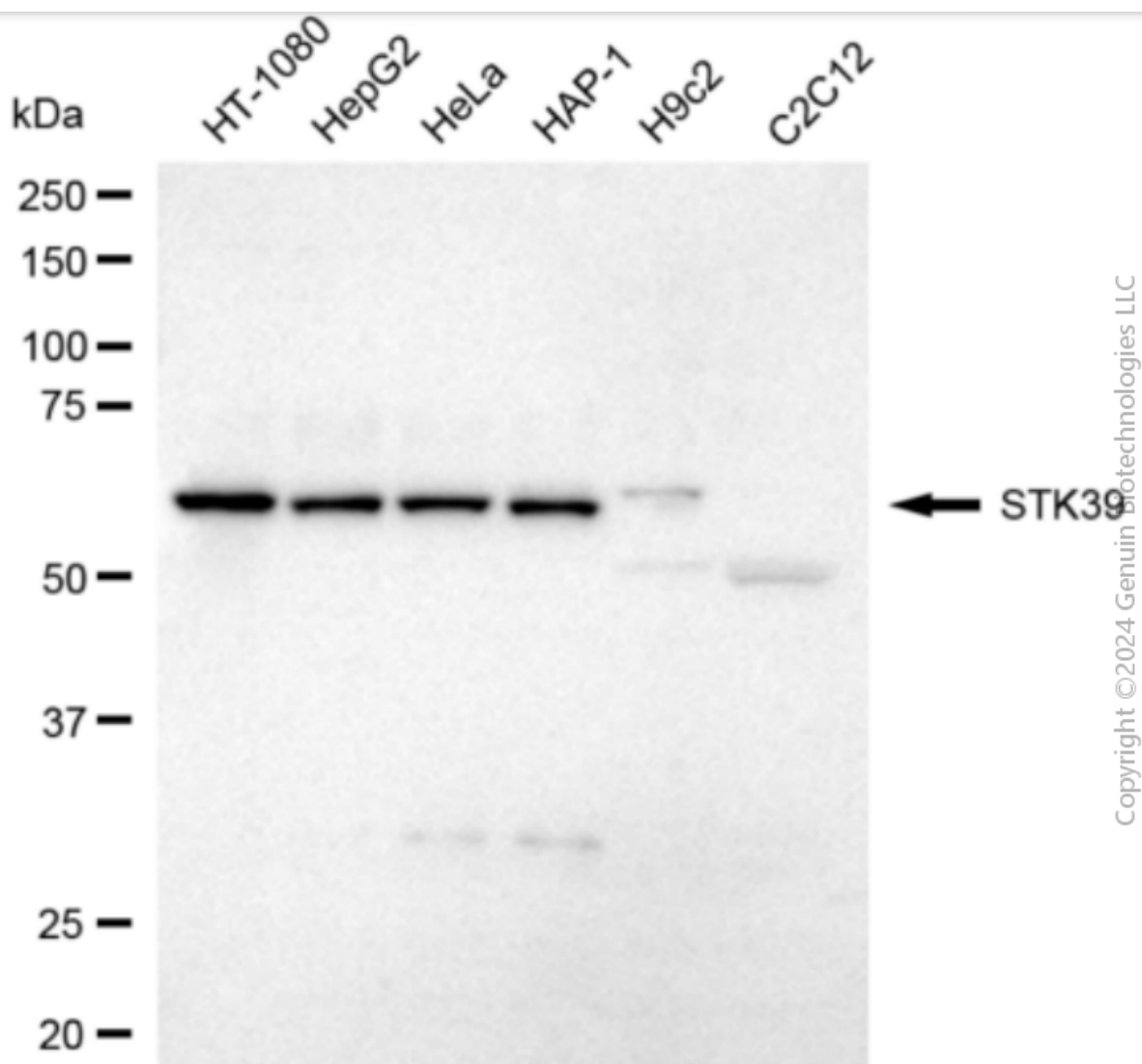
ORDERS

SALES@GENUINBIOTECH.COM
FAX: +1-540-855-7041

WWW.GENUINBIOTECH.COM



Immunocytochemical staining of HepG2 cells with anti-STK39 antibody (Cat#3138, 1:1,000). Nuclei were stained blue with DAPI; STK39 was stained magenta with Alexa Fluor® 647. Images were taken using Leica stellaris 5. Protein abundance based on laser Intensity and smart gain: High. Scale bar: 20 μ m.



Anti-Serine/Threonine Kinase 39 Recombinant Rabbit Monoclonal Antibody

PAGE 4

Western blotting analysis using anti-STK39 antibody (Cat#3138). Total cell lysates (30 µg) from various cell lines were loaded and separated by SDS-PAGE. The blot was incubated with anti-STK39 antibody (Cat#3138, 1:5,000) and HRP-conjugated goat anti-rabbit secondary antibody (Cat#201, 1:20,000) respectively. Image was developed using FeQ™ ECL Substrate Kit (Cat#226).

SUPPORT

SUPPORT@GENUINBIOTECH.COM
TEL: +1-540-855-7041

ORDERS

SALES@GENUINBIOTECH.COM
FAX: +1-540-855-7041

WWW.GENUINBIOTECH.COM