

# Anti-ADH4 Recombinant Rabbit Monoclonal Antibody



**Catalog #: 3141**

## Aliases

ADH4; Alcohol Dehydrogenase 4 (Class II), Pi Polypeptide; ADH-2; All-Trans-Retinol Dehydrogenase [NAD(+)] ADH4; Alcohol Dehydrogenase Class II Pi Chain; Alcohol Dehydrogenase; Epididymis Secretory Protein Li 4; Alcohol Dehydrogenase 4; Aldehyde Reductase; EC 1.1.1.105; EC 1.1.1.1; EC 1.1.1; HEL-S-4; ADH2

## Background

Gene Name: ADH4

NCBI Gene Entry: [127](#)

UniProt Entry: [P08319](#)

## Application Information

Molecular Weight: Predicted, 40 kDa; observed, 45 kDa

Clonality: Rabbit monoclonal antibody

Clone ID: 24GB5120

Species Reactivity: Human

Applications Tested: Western blotting (WB), immunocytochemistry (IC), flow cytometry (FCM)

## Immunogen

A synthesized peptide derived from human ADH4

## Isotype

Rabbit IgG

## Storage Buffer

Supplied in PBS (pH 7.4) containing 50% glycerol, and 0.02% sodium azide.

## Storage

Store at -20 °C for one year.

## Recommended Dilutions

Western Blotting (WB): 1:1,000-1:5,000

Immunocytochemistry (IC): 1:100-1:1,000

Flow Cytometry (FCM): 1:2,000

---

### SUPPORT

SUPPORT@GENUINBIOTECH.COM  
TEL: +1-540-855-7041

### ORDERS

SALES@GENUINBIOTECH.COM  
FAX: +1-540-855-7041

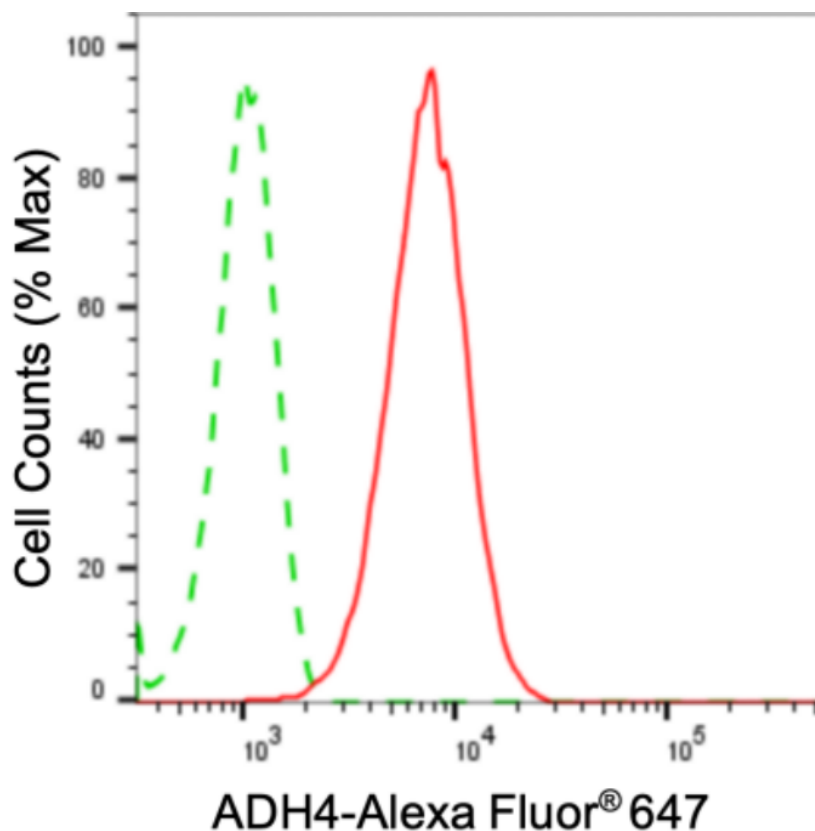
[WWW.GENUINBIOTECH.COM](http://WWW.GENUINBIOTECH.COM)

# Anti-ADH4 Recombinant Rabbit Monoclonal Antibody

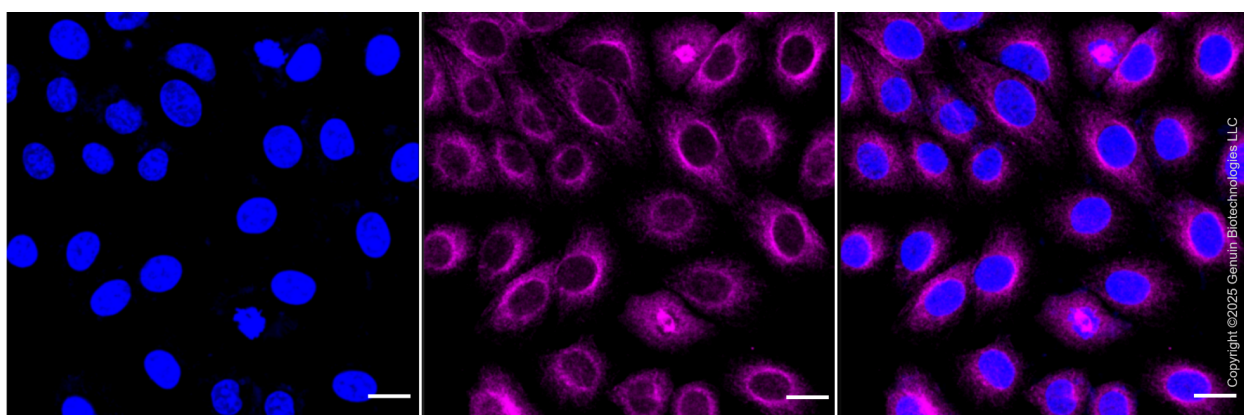
PAGE 2

**Note:** This product is for research use only.

## Validation Data



Flow cytometric analysis of ADH4 expression in HepG2 cells using anti-ADH4 antibody (Cat#3141, 1:2,000). Green, isotype control; red, ADH4.



Immunocytochemical staining of HepG2 cells with anti-ADH4 antibody (Cat#3141, 1:1,000). Nuclei were stained blue with DAPI; ADH4 was stained magenta with Alexa Fluor® 647. Images were taken using Leica stellaris 5. Protein abundance based on laser Intensity and smart gain: Medium. Scale bar: 20 µm.

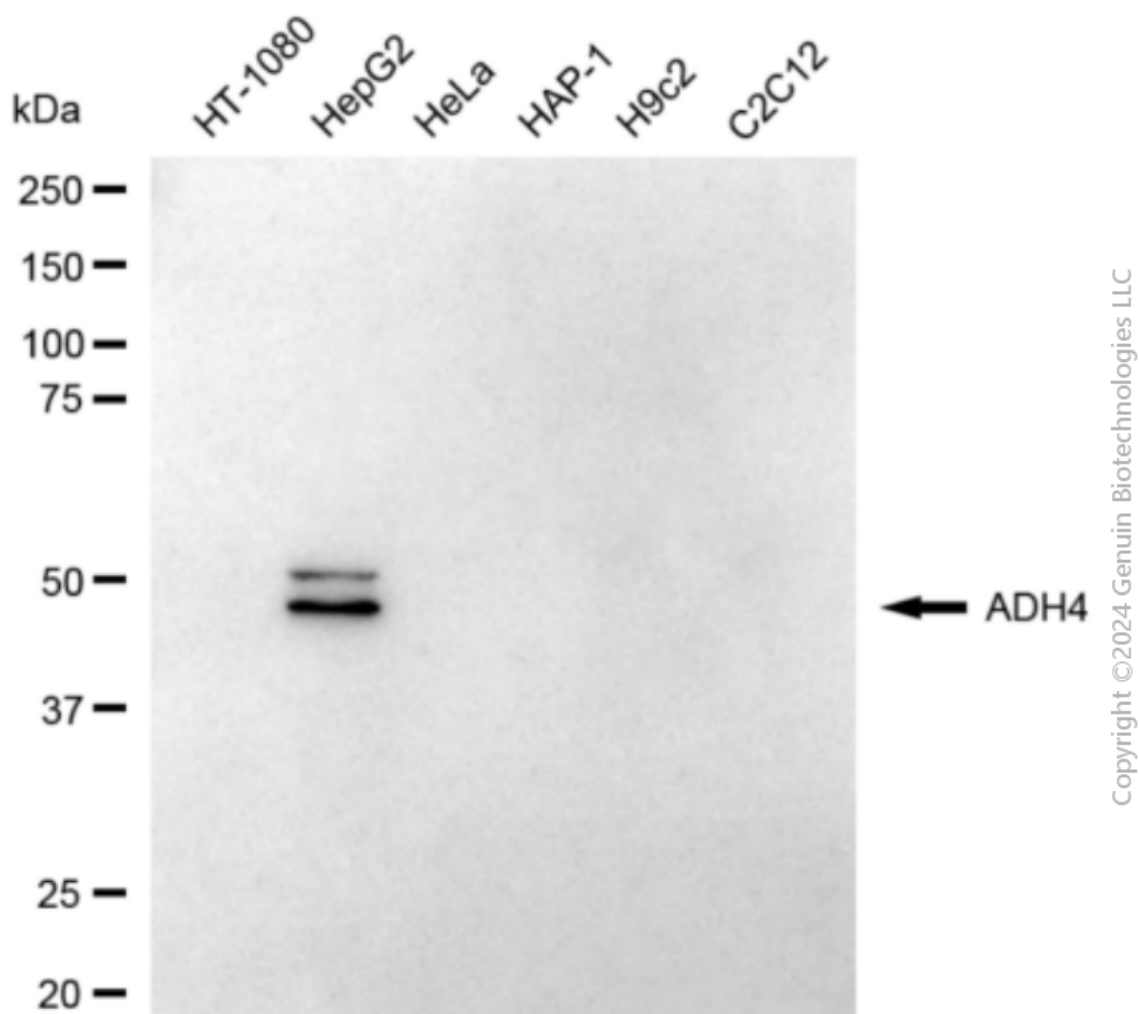
### SUPPORT

SUPPORT@GENUINBIOTECH.COM  
TEL: +1-540-855-7041

### ORDERS

SALES@GENUINBIOTECH.COM  
FAX: +1-540-855-7041

WWW.GENUINBIOTECH.COM



Western blotting analysis using anti-ADH4 antibody (Cat#3141). Total cell lysates (30  $\mu$ g) from various cell lines were loaded and separated by SDS-PAGE. The blot was incubated with anti-ADH4 antibody (Cat#3141, 1:5,000) and HRP-conjugated goat anti-rabbit secondary antibody (Cat#201, 1:20,000) respectively. Image was developed using NaQ™ ECL Substrate Kit (Cat#716).