

Anti-CD59 Molecule (CD59 Blood Group) Recombinant Rabbit Monoclonal Antibody



Catalog #: 3145

Aliases

CD59; CD59 Molecule (CD59 Blood Group); Membrane Attack Complex Inhibition Factor; Membrane Inhibitor Of Reactive Lysis; CD59 Glycoprotein; 16.3A5; P18-20; HRF20; MACIF; MIC11; MSK21; EJ16; EJ30; EL32; G344; MIN1; MIN2; MIN3; MIRL; CD59 Antigen P18-20 (Antigen Identified By Monoclonal Antibodies 16.3A5, EJ16, EJ30, EL32 And G344); CD59 Molecule, Complement Regulatory Protein; 20 KDa Homologous Restriction Factor; MEM43 Antigen; 1F5 Antigen; Protectin; HRF-20; MAC-IP; Surface Antigen Recognized By Monoclonal Antibody 16.3A5; Membrane Attack Complex (MAC) Inhibition Factor; CD59 Antigen, Complement Regulatory Protein; Lymphocytic Antigen CD59/MEM43; Human Leukocyte Antigen MIC11; T Cell-Activating Protein; CD59 Blood Group Antigen; MAC-Inhibitory Protein; Ly-6-Like Protein; CD59 Molecule; CD59 Antigen; MEM43; 1F5

Background

Gene Name: CD59

NCBI Gene Entry: [966](#)

UniProt Entry: [P13987](#)

Application Information

Molecular Weight: Predicted, 14 kDa; observed, 16 kDa

Clonality: Rabbit monoclonal antibody

Clone ID: 24GB5140

Species Reactivity: Human

Applications Tested: Western blotting (WB), immunocytochemistry (IC), flow cytometry (FCM)

Immunogen

A synthesized peptide derived from human CD59

Isotype

Rabbit IgG

Storage Buffer

Supplied in PBS (pH 7.4) containing 50% glycerol, and 0.02% sodium azide.

Storage

Store at -20 °C for one year.

SUPPORT

SUPPORT@GENUINBIOTECH.COM
TEL: +1-540-855-7041

ORDERS

SALES@GENUINBIOTECH.COM
FAX: +1-540-855-7041

WWW.GENUINBIOTECH.COM

Anti-CD59 Molecule (CD59 Blood Group) Recombinant Rabbit Monoclonal Antibody

PAGE 2

Recommended Dilutions

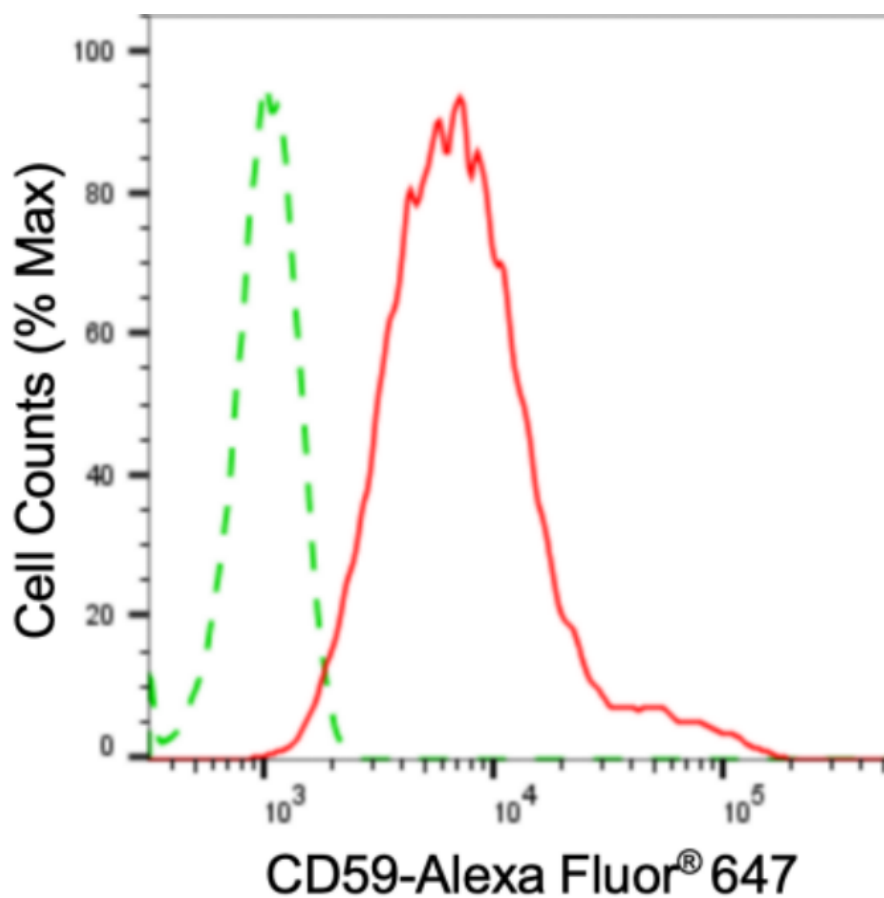
Western Blotting (WB): 1:1,000-1:5,000

Immunocytochemistry (IC): 1:100-1:1,000

Flow Cytometry (FCM): 1:2,000

Note: This product is for research use only.

Validation Data



Copyright ©2024 Genuin Biotechnologies LLC

Flow cytometric analysis of CD59 expression in HepG2 cells using anti-CD59 antibody (Cat#3145, 1:2,000). Green, isotype control; red, CD59.

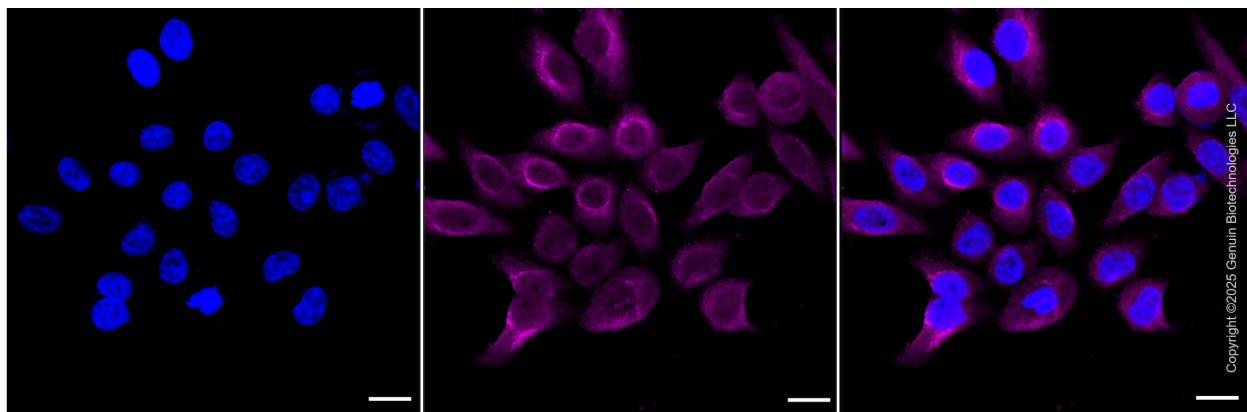
SUPPORT

SUPPORT@GENUINBIOTECH.COM
TEL: +1-540-855-7041

ORDERS

SALES@GENUINBIOTECH.COM
FAX: +1-540-855-7041

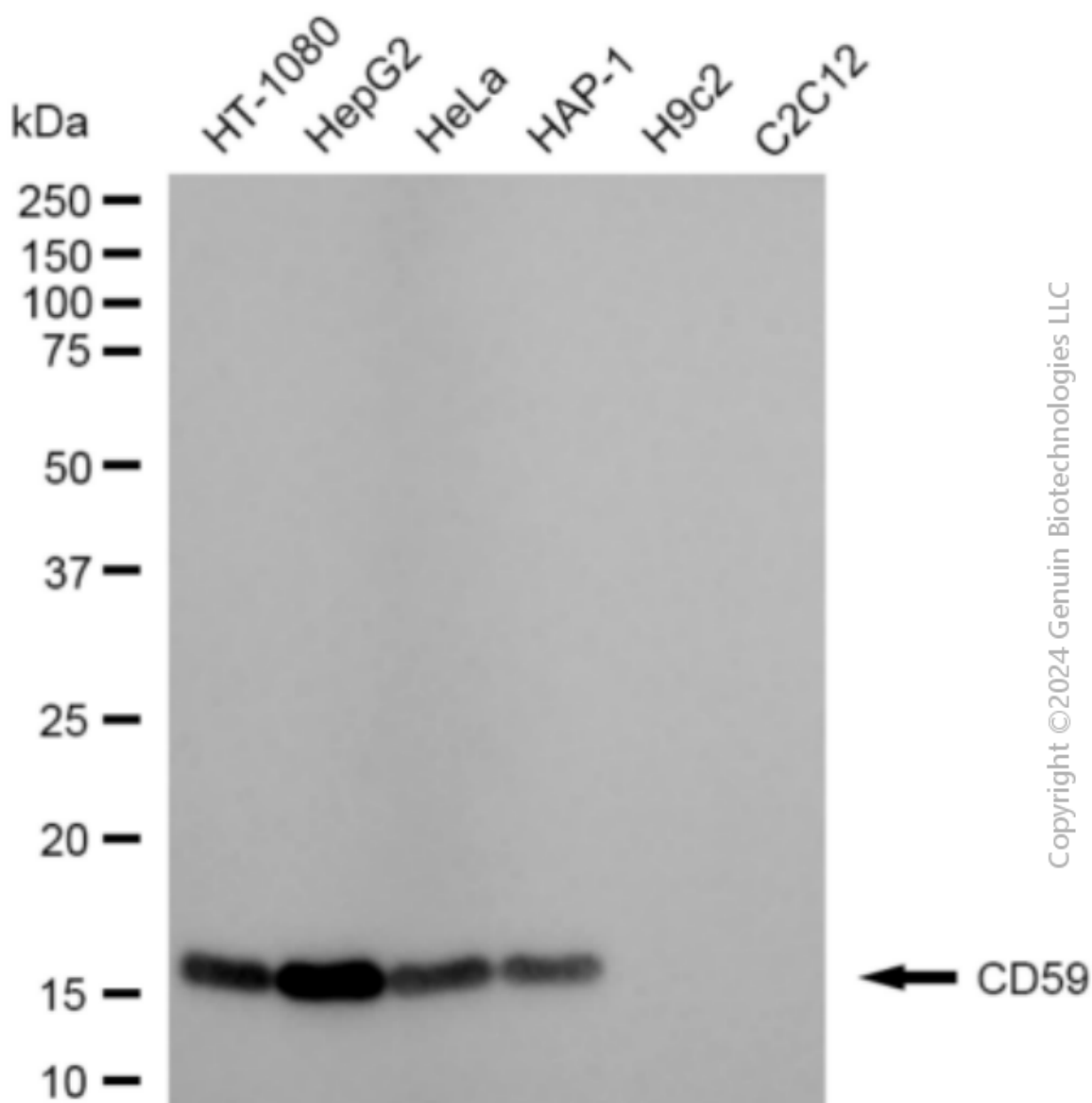
WWW.GENUINBIOTECH.COM



Immunocytochemical staining of HepG2 cells with CD59 antibody (Cat#3145, 1:1,000). Nuclei were stained blue with DAPI; CD59 was stained magenta with Alexa Fluor® 647. Images were taken using Leica stellaris 5. Protein abundance based on laser Intensity and smart gain: High. Scale bar: 20 μ m.

**Anti-CD59 Molecule (CD59 Blood Group)
Recombinant Rabbit Monoclonal Antibody**

PAGE 4



Western blotting analysis using anti-CD59 antibody (Cat#3145). Total cell lysates (10 µg) from various cell lines were loaded and separated by SDS-PAGE. The blot was incubated with anti-CD59 antibody (Cat#3145, 1:5,000) and HRP-conjugated goat anti-rabbit secondary antibody (Cat#201, 1:20,000) respectively. Image was developed using NaQ™ ECL Substrate Kit (Cat#716).

SUPPORT

SUPPORT@GENUINBIOTECH.COM
TEL: +1-540-855-7041

ORDERS

SALES@GENUINBIOTECH.COM
FAX: +1-540-855-7041

WWW.GENUINBIOTECH.COM