

Anti-MIF Recombinant Rabbit Monoclonal Antibody



Catalog #: 3146

Aliases

MIF; Macrophage Migration Inhibitory Factor; GIF; Phenylpyruvate Tautomerase; GLIF; Macrophage Migration Inhibitory Factor (Glycosylation-Inhibiting Factor); Glycosylation-Inhibiting Factor; L-Dopachrome Tautomerase; L-Dopachrome Isomerase; MMIF; Epididymis Secretory Sperm Binding Protein; EC 5.3.3.12; EC 5.3.2.1

Background

Gene Name: MIF

NCBI Gene Entry: [4282](#)

UniProt Entry: [P14174](#)

Application Information

Molecular Weight: Predicted, 12 kDa; observed, 12 kDa

Clonality: Rabbit monoclonal antibody

Clone ID: 24GB5145

Species Reactivity: Human, mouse, rat

Applications Tested: Western blotting (WB), immunocytochemistry (IC), flow cytometry (FCM)

Immunogen

A synthesized peptide derived from human MIF

Isotype

Rabbit IgG

Storage Buffer

Supplied in PBS (pH 7.4) containing 50% glycerol, and 0.02% sodium azide.

Storage

Store at -20 °C for one year.

Recommended Dilutions

Western Blotting (WB): 1:1,000-1:5,000

Immunocytochemistry (IC): 1:100-1:1,000

Flow Cytometry (FCM): 1:2,000

SUPPORT

SUPPORT@GENUINBIOTECH.COM
TEL: +1-540-855-7041

ORDERS

SALES@GENUINBIOTECH.COM
FAX: +1-540-855-7041

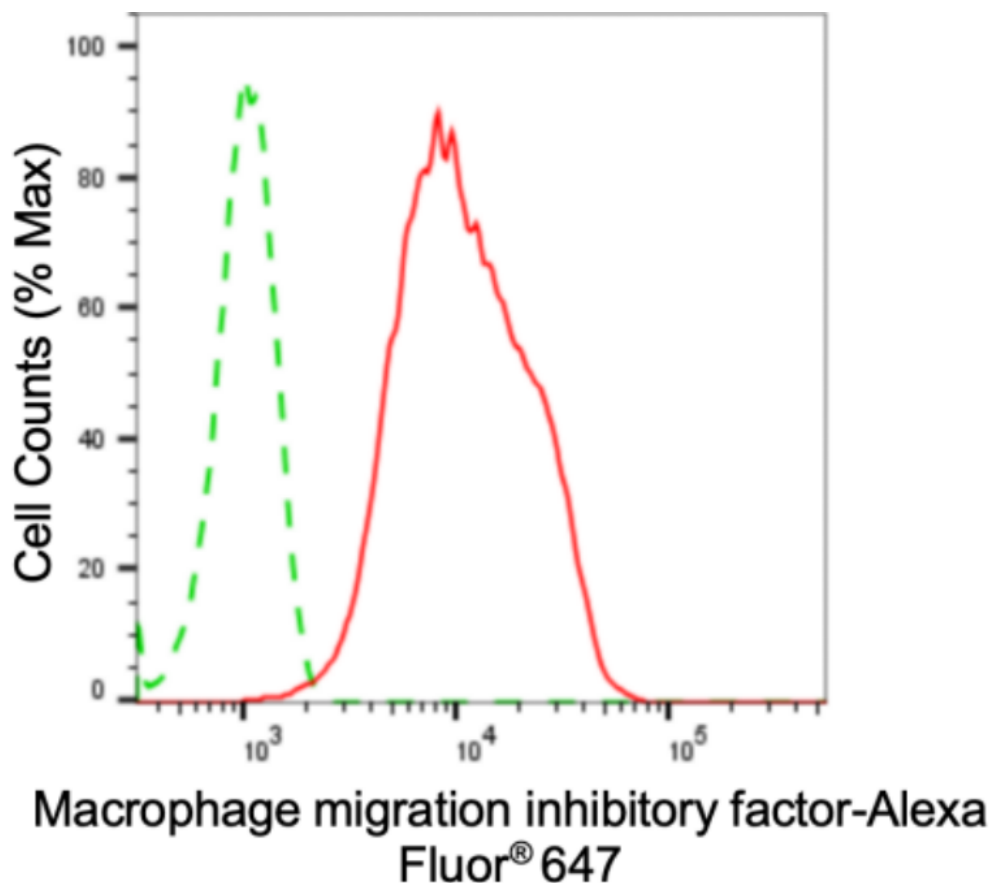
WWW.GENUINBIOTECH.COM

Anti-MIF Recombinant Rabbit Monoclonal Antibody

PAGE 2

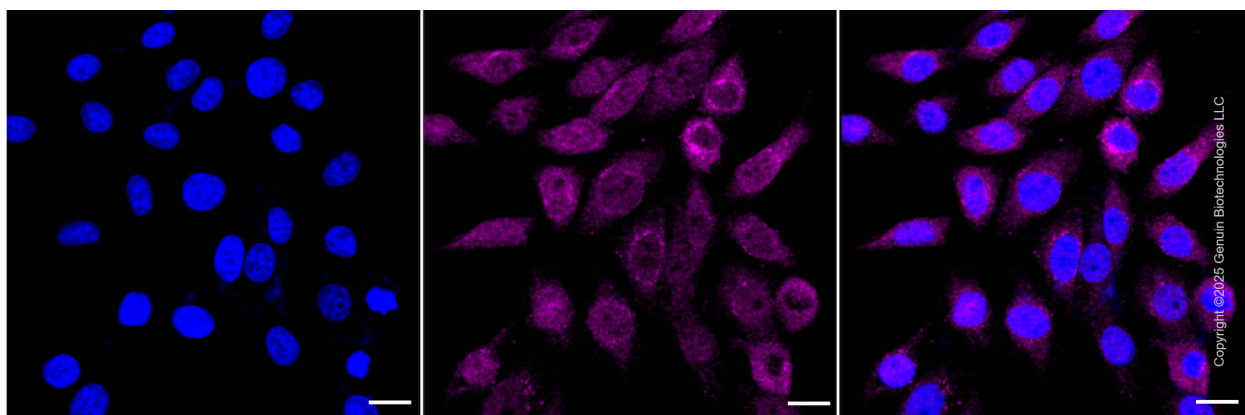
Note: This product is for research use only.

Validation Data



Copyright ©2024 Genuin Biotechnologies LLC

Flow cytometric analysis of Macrophage migration inhibitory factor expression in HepG2 cells using anti-Macrophage migration inhibitory factor antibody (Cat#3146, 1:2,000). Green, isotype control; red, Macrophage migration inhibitory factor.



Immunocytochemical staining of HepG2 cells with macrophage migration inhibitory factor antibody (Cat#3146, 1:1,000). Nuclei were stained blue with DAPI; Macrophage migration

SUPPORT

SUPPORT@GENUINBIOTECH.COM
TEL: +1-540-855-7041

ORDERS

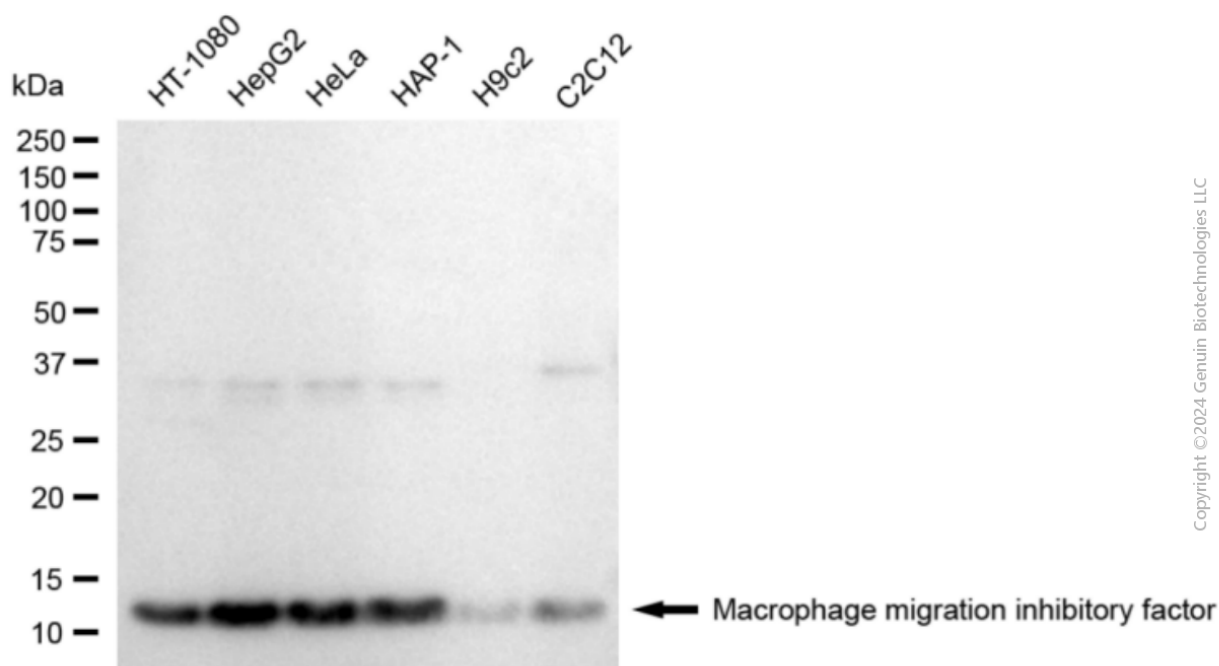
SALES@GENUINBIOTECH.COM
FAX: +1-540-855-7041

WWW.GENUINBIOTECH.COM

Anti-MIF Recombinant Rabbit Monoclonal Antibody

PAGE 3

inhibitory factor was stained magenta with Alexa Fluor® 647. Images were taken using Leica stellaris 5. Protein abundance based on laser Intensity and smart gain: High. Scale bar: 20 µm.



Western blotting analysis using anti-macrophage migration inhibitory factor antibody (Cat#3146). Total cell lysates (30 µg) from various cell lines were loaded and separated by SDS-PAGE. The blot was incubated with anti-macrophage migration inhibitory factor antibody (Cat#3146, 1:5,000) and HRP-conjugated goat anti-rabbit secondary antibody (Cat#201, 1:20,000) respectively. Image was developed using NaQ™ ECL Substrate Kit (Cat#716).

SUPPORT

SUPPORT@GENUINBIOTECH.COM
TEL: +1-540-855-7041

ORDERS

SALES@GENUINBIOTECH.COM
FAX: +1-540-855-7041

WWW.GENUINBIOTECH.COM