

Anti-Phospho-AKT1 (Thr450) Rabbit Monoclonal Antibody



Catalog #: 3150

Aliases

AKT1; AKT Serine/Threonine Kinase 1; RAC; PKB; PRKBA; AKT; V-Akt Murine Thymoma Viral Oncogene Homolog 1; RAC-Alpha Serine/Threonine-Protein Kinase; Protein Kinase B Alpha; Proto-Oncogene C-Akt; Protein Kinase B; RAC-PK-Alpha; EC 2.7.11.1; RAC-ALPHA; PKB Alpha; V-Akt Murine Thymoma Viral Oncogene-Like Protein 1; Serine-Threonine Protein Kinase; Rac Protein Kinase Alpha; RAC-Alpha; PKB-ALPHA; EC 2.7.11; AKT1m

Background

Gene Name: AKT1

NCBI Gene Entry: [207](#)

UniProt Entry: [P31749](#)

Application Information

Molecular Weight: Predicted, 56 kDa; observed, 56 kDa

Clonality: Rabbit monoclonal antibody

Clone ID: 24GB4255

Species Reactivity: Human, mouse, rat

Applications Tested: Western blotting (WB), flow cytometry (FCM), immunocytochemistry (IC)

Immunogen

A synthesized peptide derived from human Phospho-AKT1 (Thr450)

Isotype

Rabbit IgG

Storage Buffer

Supplied in PBS (pH 7.4) containing 50% glycerol, and 0.02% sodium azide.

Storage

Store at -20 °C for one year.

Recommended Dilutions

Western Blotting (WB): 1:1,000-1:5,000

Flow Cytometry (FCM): 1:2,000

Immunocytochemistry (IC): 1:100-1:1,000

SUPPORT

SUPPORT@GENUINBIOTECH.COM
TEL: +1-540-855-7041

ORDERS

SALES@GENUINBIOTECH.COM
FAX: +1-540-855-7041

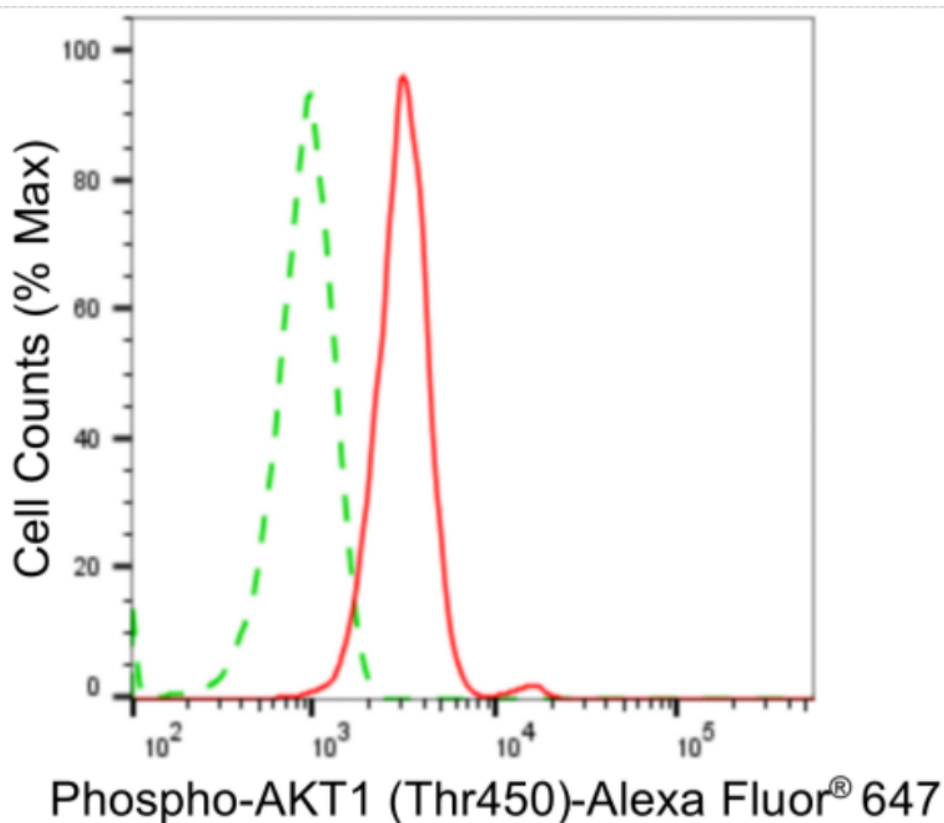
WWW.GENUINBIOTECH.COM

Anti-Phospho-AKT1 (Thr450) Rabbit Monoclonal Antibody

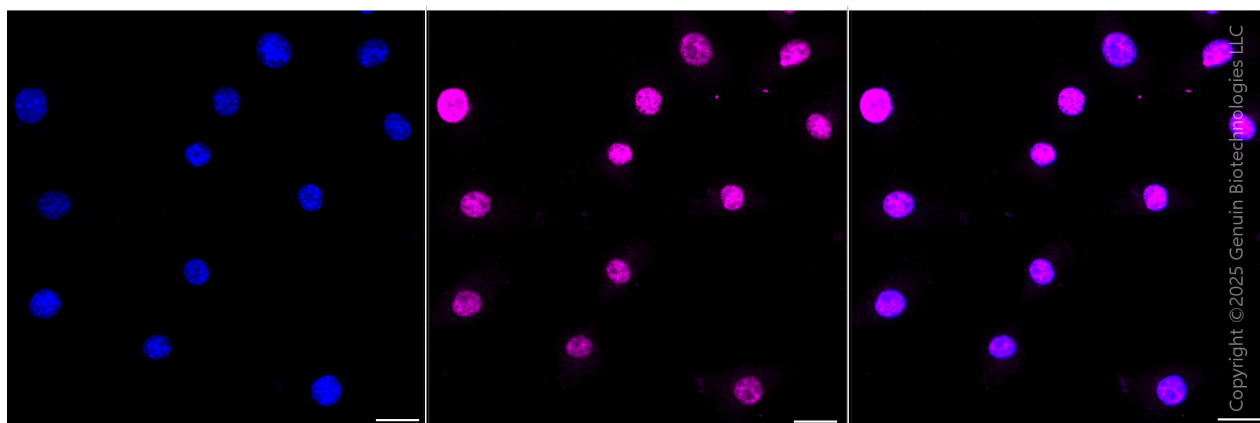
PAGE 2

Note: This product is for research use only.

Validation Data



Flow cytometric analysis of Phospho-AKT1 (Thr450) expression in C2C12 cells using anti-Phospho-AKT1 (Thr450) antibody (Cat#3150, 1:2,000). Green, isotype control; red, Phospho-AKT1 (Thr450).



Immunocytochemical staining of C2C12 cells with anti-Phospho-AKT1 (Thr450) antibody (Cat#3150, 1:1,000). Nuclei were stained blue with DAPI; Phospho-AKT1 (Thr450) was stained magenta with Alexa Fluor® 647. Images were taken using Leica stellaris 5. Protein abundance

SUPPORT

SUPPORT@GENUINBIOTECH.COM
TEL: +1-540-855-7041

ORDERS

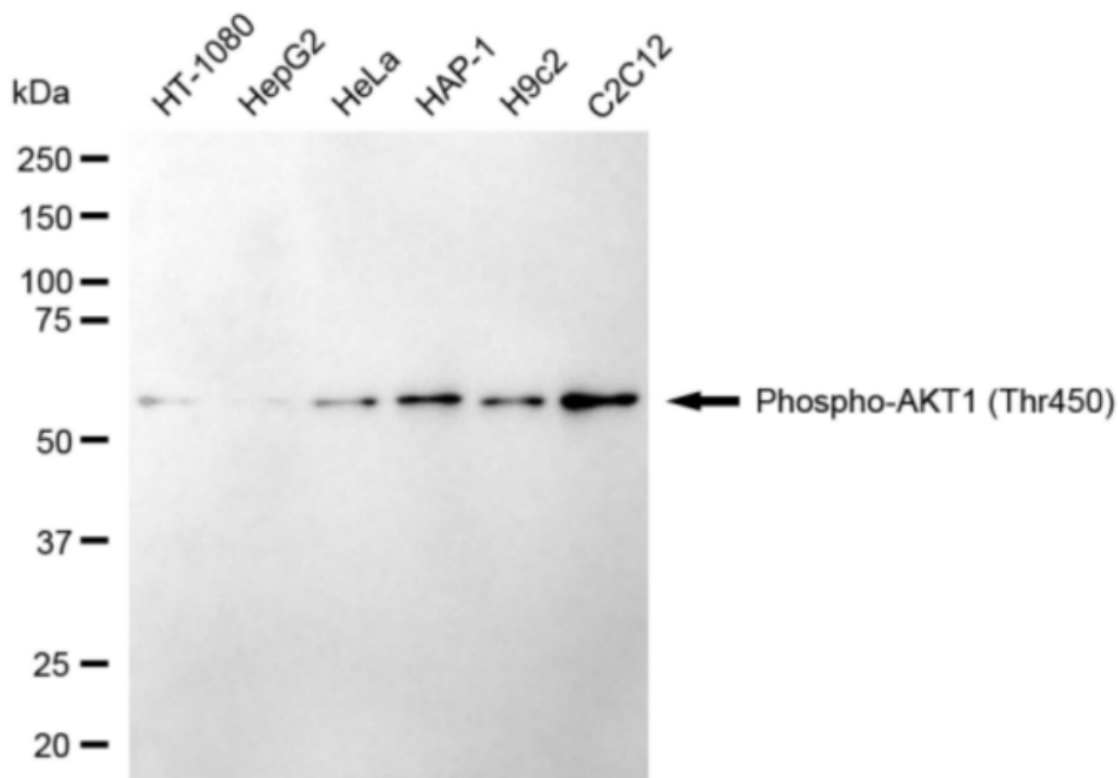
SALES@GENUINBIOTECH.COM
FAX: +1-540-855-7041

WWW.GENUINBIOTECH.COM

Anti-Phospho-AKT1 (Thr450) Rabbit Monoclonal Antibody

PAGE 3

based on laser Intensity and Smart Gain: High. Scale bar, 20 μ m.



Western blotting analysis using anti-phospho-AKT1 (Thr450) antibody (Cat#3150). Total cell lysates (30 μ g) from various cell lines were loaded and separated by SDS-PAGE. The blot was incubated with anti-phospho-AKT1 (Thr450) antibody (Cat#3150, 1:5,000) and HRP-conjugated goat anti-rabbit secondary antibody (Cat#201, 1:20,000) respectively. Image was developed using NaQ™ ECL Substrate Kit (Cat#716).

SUPPORT

SUPPORT@GENUINBIOTECH.COM
TEL: +1-540-855-7041

ORDERS

SALES@GENUINBIOTECH.COM
FAX: +1-540-855-7041

WWW.GENUINBIOTECH.COM