

Catalog #: 3153

Aliases

Caspase 9; ICE-LAP6; APAF-3; MCH6; PPP1R56; Caspase 9, Apoptosis-Related Cysteine Peptidase; Protein Phosphatase 1, Regulatory Subunit 56; ICE-Like Apoptotic Protease 6; Caspase-9; Caspase 9, Apoptosis-Related Cysteine Protease; Apoptotic Protease Activating Factor 3; Apoptotic Protease-Activating Factor 3; Apoptotic Protease MCH-6; Apoptotic Protease Mch-6; EC 3.4.22.62; CASP-9; APAF3

Background

Gene Name: CASP9

NCBI Gene Entry: [842](#)

UniProt Entry: [P55211](#)

Application Information

Molecular Weight: Predicted, 50 kDa; observed, 50 kDa

Clonality: Rabbit monoclonal antibody

Clone ID: 24GB4270

Species Reactivity: Mouse, rat

Applications Tested: Western blotting (WB), flow cytometry (FCM), immunocytochemistry (IC)

Immunogen

Recombinant protein of Mouse Caspase-9(UniProt Entry: [Q8C3Q9](#))

Isotype

Rabbit IgG

Storage Buffer

Supplied in PBS (pH 7.4) containing 50% glycerol, and 0.02% sodium azide.

Storage

Store at -20 °C for one year.

Recommended Dilutions

Western Blotting (WB): 1:1,000-1:5,000

Flow Cytometry (FCM): 1:2,000

Immunocytochemistry (IC): 1:100-1:1,000

SUPPORT

SUPPORT@GENUINBIOTECH.COM
TEL: +1-540-855-7041

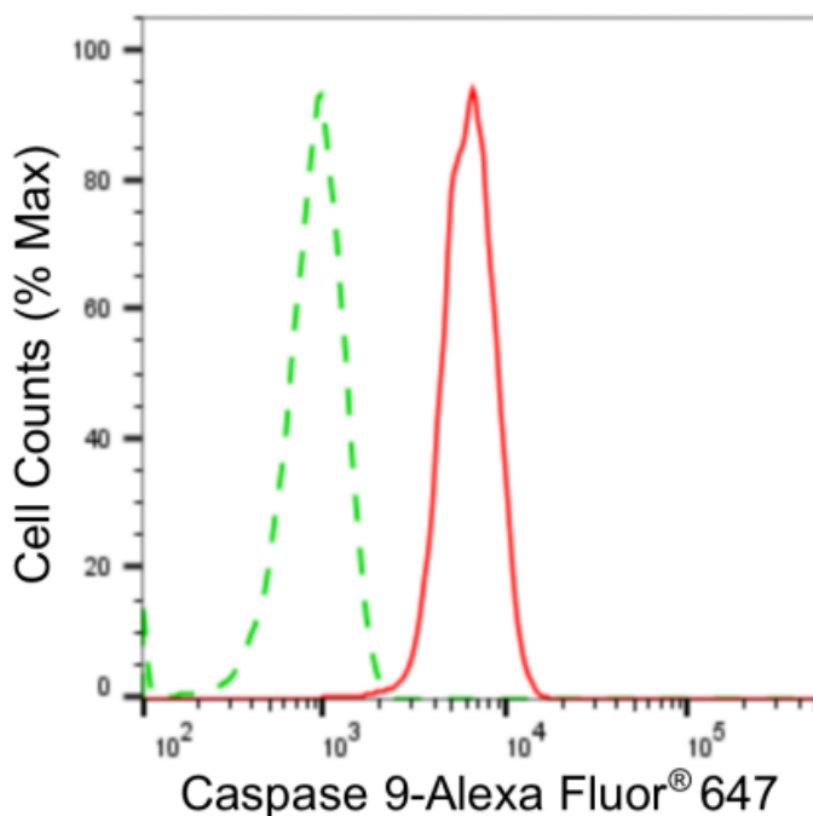
ORDERS

SALES@GENUINBIOTECH.COM
FAX: +1-540-855-7041

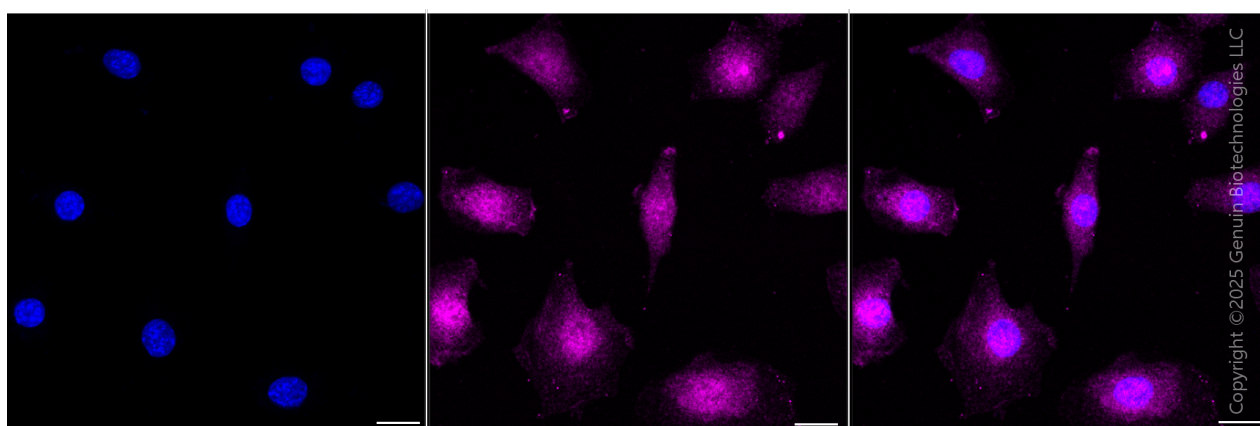
WWW.GENUINBIOTECH.COM

Note: This product is for research use only.

Validation Data



Flow cytometric analysis of Caspase 9 expression in C2C12 cells using anti-Caspase 9 antibody (Cat#3153, 1:2,000). Green, isotype control; red, Caspase 9.



Immunocytochemical staining of C2C12 cells with anti-Caspase 9 antibody (Cat#3153, 1:1,000). Nuclei were stained blue with DAPI; Caspase 9 was stained magenta with Alexa Fluor® 647. Images were taken using Leica stellaris 5. Protein abundance based on laser Intensity and Smart Gain: Medium. Scale bar, 20 μ m.

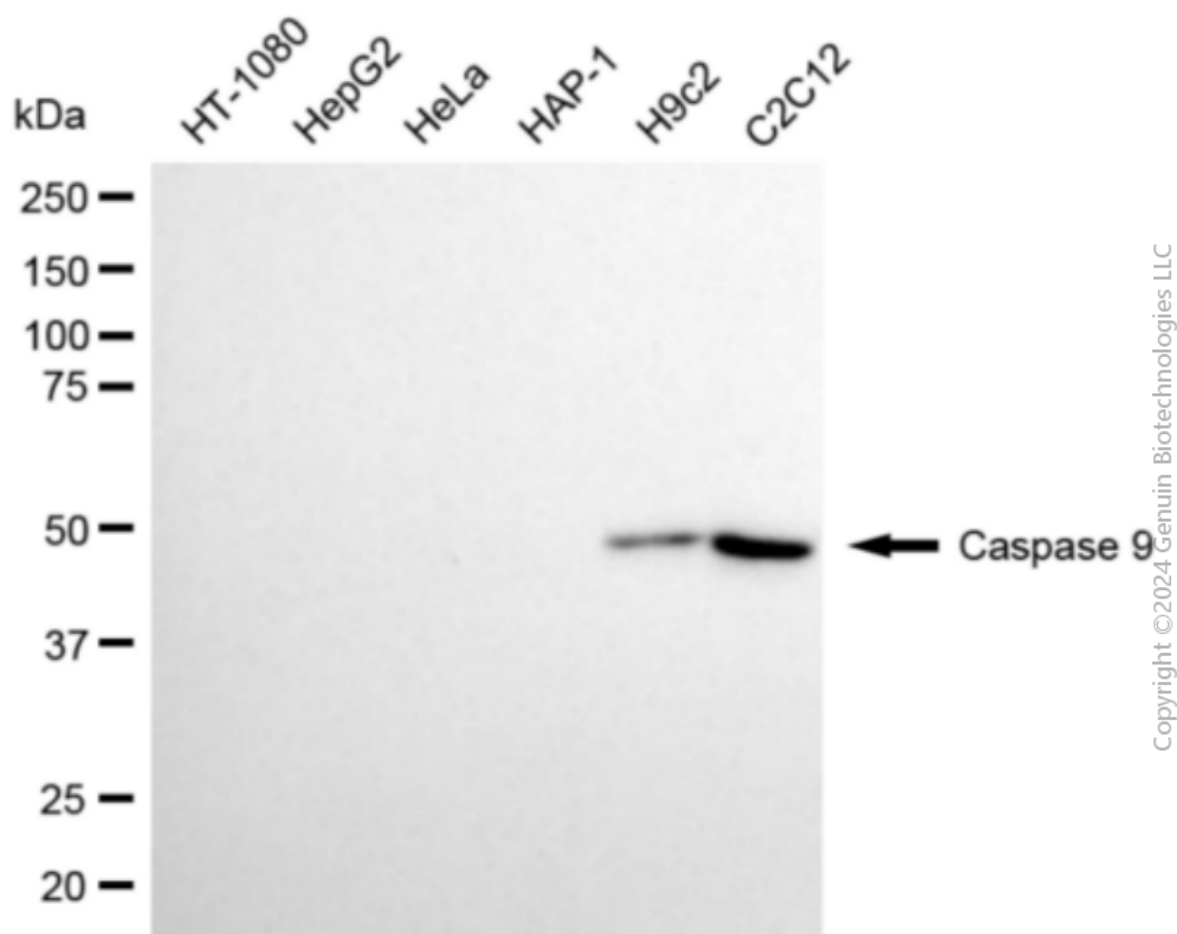
SUPPORT

SUPPORT@GENUINBIOTECH.COM
TEL: +1-540-855-7041

ORDERS

SALES@GENUINBIOTECH.COM
FAX: +1-540-855-7041

WWW.GENUINBIOTECH.COM



Western blotting analysis using anti-caspase 9 antibody (Cat#3153). Total cell lysates (30 μ g) from various cell lines were loaded and separated by SDS-PAGE. The blot was incubated with anti-caspase 9 antibody (Cat#3153, 1:5,000) and HRP-conjugated goat anti-rabbit secondary antibody (Cat#201, 1:20,000) respectively. Image was developed using NaQ™ ECL Substrate Kit (Cat#716).