

Anti-Crystallin Alpha B Rabbit Monoclonal Antibody



Catalog #: 3174

Aliases

CRYAB; Crystallin Alpha B; HSPB5; CRYA2; Renal Carcinoma Antigen NY-REN-27; Heat Shock Protein Beta-5; Rosenthal Fiber Component; Alpha-Crystallin B Chain; Epididymis Secretory Protein Li 101; Heat-Shock 20 KD Like-Protein; Crystallin, Alpha B; Alpha(B)-Crystallin; HEL-S-101; CTRCT16; CMD1II; CTPP2; HspB5; MFM2

Background

Gene Name: CRYAB

NCBI Gene Entry: [1410](#)

UniProt Entry: [P02511](#)

Application Information

Molecular Weight: Predicted, 20 kDa; observed, 20 kDa

Clonality: Rabbit monoclonal antibody

Clone ID: 24GB4360

Species Reactivity: Rat

Applications Tested: Western blotting (WB), immunocytochemistry (IC), flow cytometry (FCM)

Immunogen

A synthesized peptide derived from human Alpha B Crystallin

Isotype

Rabbit IgG

Storage Buffer

Supplied in PBS (pH 7.4) containing 50% glycerol, and 0.02% sodium azide.

Storage

Store at -20 °C for one year.

Recommended Dilutions

Western Blotting (WB): 1:1,000-1:5,000

Immunocytochemistry (IC): 1:100-1:1,000

Flow Cytometry (FCM) : 1:2,000

SUPPORT

SUPPORT@GENUINBIOTECH.COM
TEL: +1-540-855-7041

ORDERS

SALES@GENUINBIOTECH.COM
FAX: +1-540-855-7041

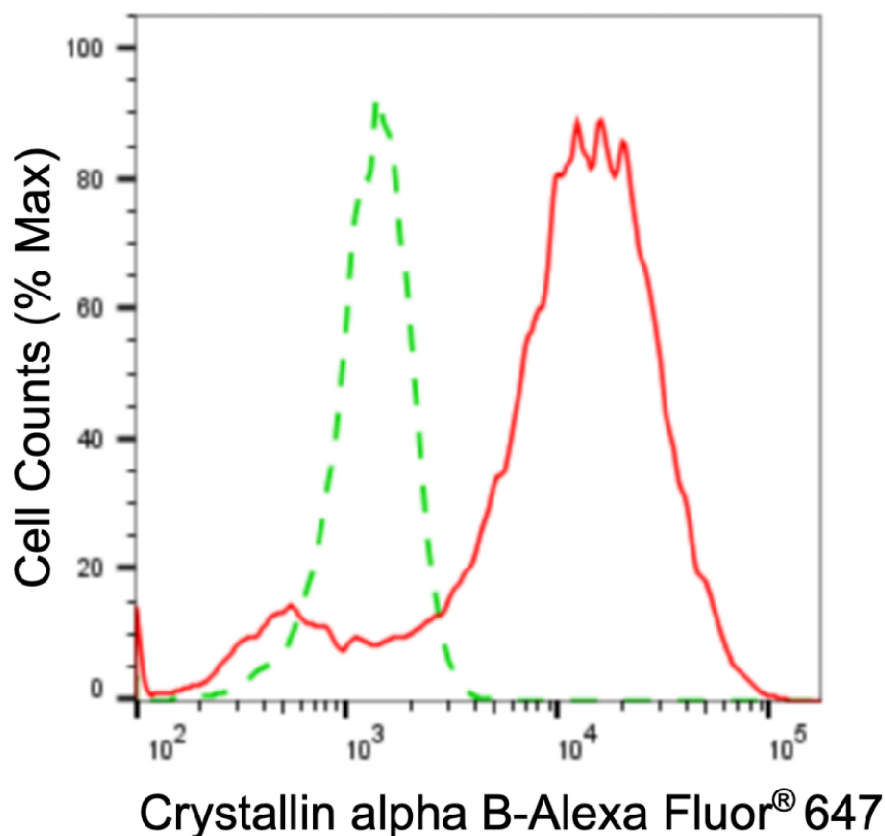
WWW.GENUINBIOTECH.COM

Anti-Crystallin Alpha B Rabbit Monoclonal Antibody

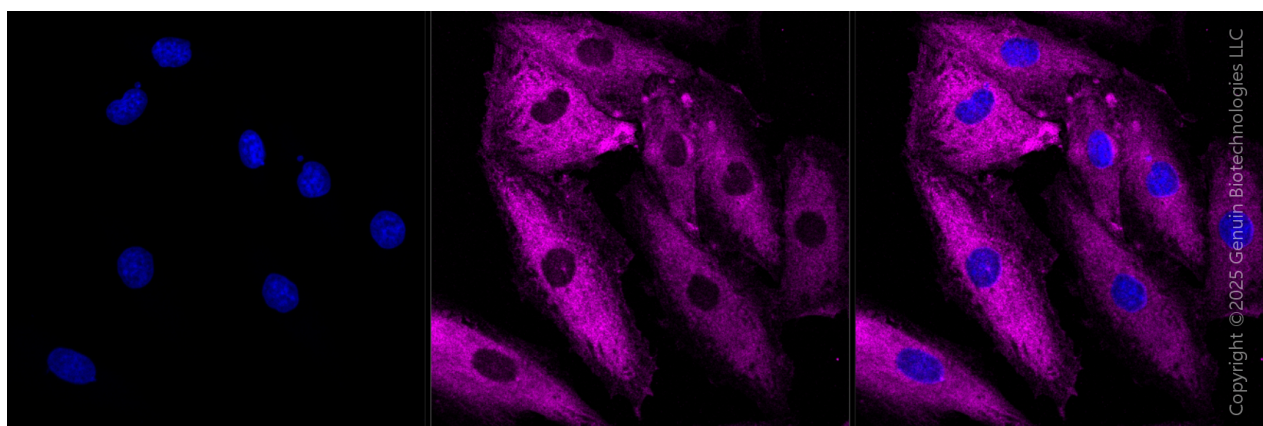
PAGE 2

Note: This product is for research use only.

Validation Data



Flow cytometric analysis of crystallin alpha B expression in H9c2 cells using anti-crystallin alpha B antibody (Cat#3174, 1:2,000). Green, isotype control; red, crystallin alpha B.



Immunocytochemical staining of H9C2 cells with anti-Crystallin alpha B antibody (Cat#3174, 1:1,000). Nuclei were stained blue with DAPI; Crystallin alpha B was stained magenta with Alexa Fluor® 647. Images were taken using Leica stellaris 5. Protein abundance based on laser Intensity and smart gain □ Medium. Scale bar, 20 µm.

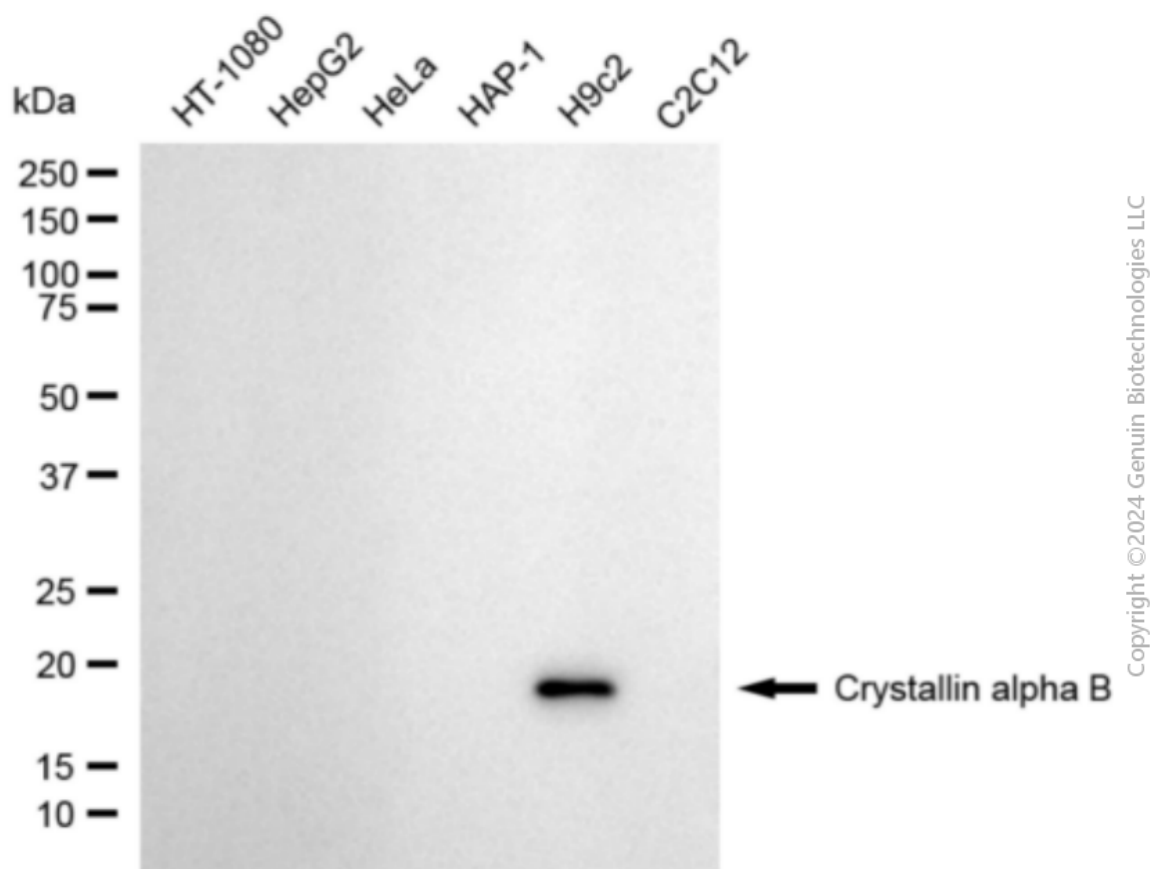
SUPPORT

SUPPORT@GENUINBIOTECH.COM
TEL: +1-540-855-7041

ORDERS

SALES@GENUINBIOTECH.COM
FAX: +1-540-855-7041

WWW.GENUINBIOTECH.COM



Western blotting analysis using anti-crystallin alpha B antibody (Cat#3174). Total cell lysates (30 μ g) from various cell lines were loaded and separated by SDS-PAGE. The blot was incubated with anti-crystallin alpha B antibody (Cat#3174, 1:5,000) and HRP-conjugated goat anti-rabbit secondary antibody (Cat#201, 1:20,000) respectively. Image was developed using NaQ™ ECL Substrate Kit (Cat#716).