

# Anti-Phospho-ErbB 2/EGFR (Tyr1248/Tyr1173) Rabbit Monoclonal Antibody



**Catalog #: 3185**

## Aliases

ERBB2; Erb-B2 Receptor Tyrosine Kinase 2; HER2; NEU 2; C-ERB-2; C-ERB2; MLN-19; HER-2; CD340; NGL; V-Erb-B2 Avian Erythroblastic Leukemia Viral Oncogene Homolog 2; Tyrosine Kinase-Type Cell Surface Receptor HER2; Neuro/Glioblastoma Derived Oncogene Homolog; Human Epidermal Growth Factor Receptor 2; Receptor Tyrosine-Protein Kinase ErbB-2; Metastatic Lymph Node Gene 19 Protein; Proto-Oncogene C-ErbB-2; Proto-Oncogene Neu; P185(ErbB2); EC 2.7.10.1; MLN 19; V-Erb-B2 Avian Erythroblastic Leukemia Viral Oncogene Homolog 2 (Neuro/Glioblastoma Derived Oncogene Homolog) 2; V-Erb-B2 Erythroblastic Leukemia Viral Oncogene Homolog 2, Neuro/Glioblastoma Derived Oncogene Homolog; V-Erb-B2 Avian Erythroblastic Leukemia Viral Oncoprotein 2; Neuroblastoma/Glioblastoma Derived Oncogene Homolog; Metastatic Lymph Node Gene 19; C-Erb B2/Neu Protein; CD340 Antigen; P185(ERBB2); HER-2/Neu; Herstatin; P185erbB2; EC 2.7.10; VSCN2; MLN19; TKR1

## Background

Gene Name: ERBB2

NCBI Gene Entry: [2064](#)

UniProt Entry: [P04626](#)

## Application Information

Molecular Weight: Predicted, 138 kDa; observed, 180 kDa

Clonality: Rabbit monoclonal antibody

Clone ID: 24GB4415

Species Reactivity: Human

Applications Tested: Western blotting (WB), flow cytometry (FCM), immunocytochemistry (IC)

## Immunogen

A synthesized peptide derived from human Phospho-ErbB 2/EGFR (Tyr1248/Tyr1173)

## Isotype

Rabbit IgG

## Storage Buffer

Supplied in PBS (pH 7.4) containing 50% glycerol, and 0.02% sodium azide.

## Storage

---

### SUPPORT

SUPPORT@GENUINBIOTECH.COM  
TEL: +1-540-855-7041

### ORDERS

SALES@GENUINBIOTECH.COM  
FAX: +1-540-855-7041

[WWW.GENUINBIOTECH.COM](http://WWW.GENUINBIOTECH.COM)

# Anti-Phospho-ErbB 2/EGFR (Tyr1248/Tyr1173) Rabbit Monoclonal Antibody

PAGE 2

Store at -20 °C for one year.

## Recommended Dilutions

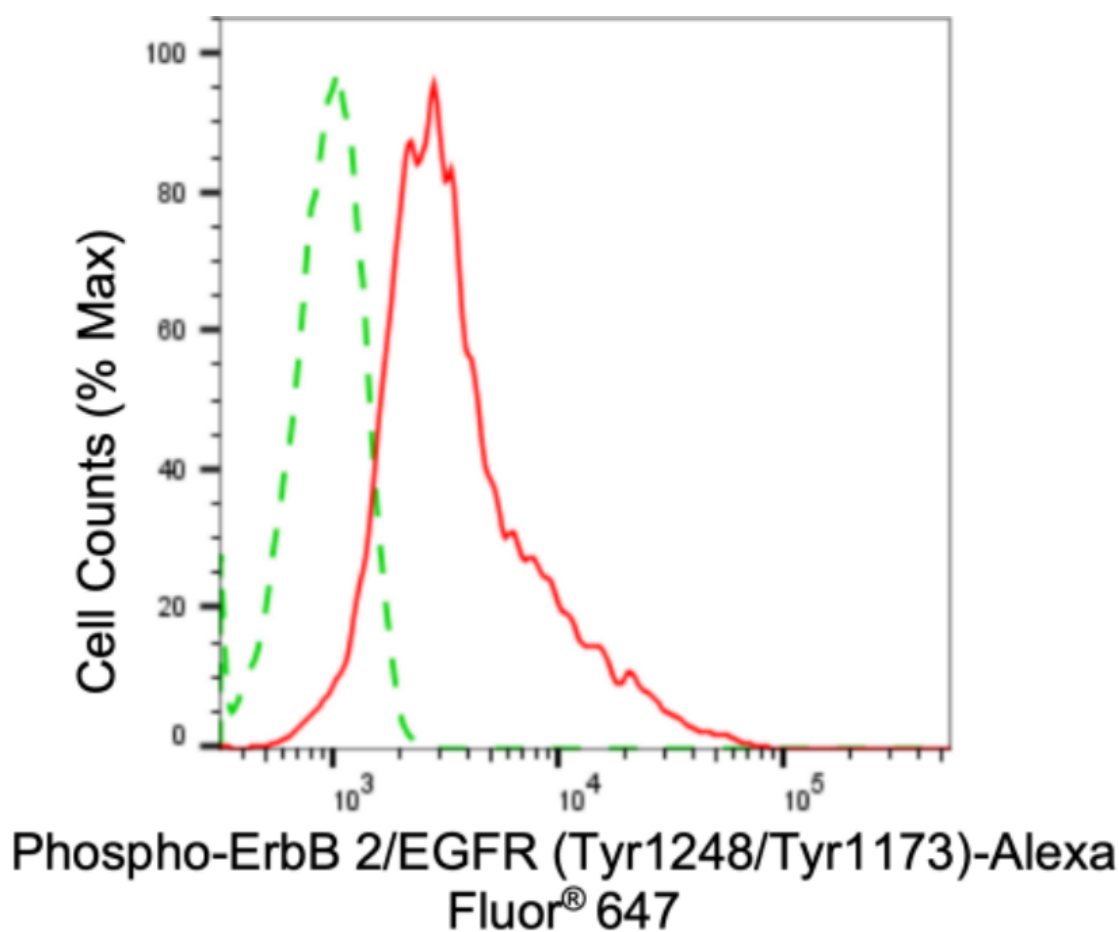
Western Blotting (WB): 1:1,000-1:5,000

Flow Cytometry (FCM): 1:2,000

Immunocytochemistry (IC): 1:100-1:1,000

**Note:** This product is for research use only.

## Validation Data



Copyright ©2024 Genuin Biotechnologies LLC

Flow cytometric analysis of phospho-ErbB 2/EGFR (Tyr1248/Tyr1173) expression in HepG2 cells using anti-phospho-ErbB 2/EGFR (Tyr1248/Tyr1173) antibody (Cat#3185, 1:2,000). Green, isotype control; red, phospho-ErbB 2/EGFR (Tyr1248/Tyr1173).

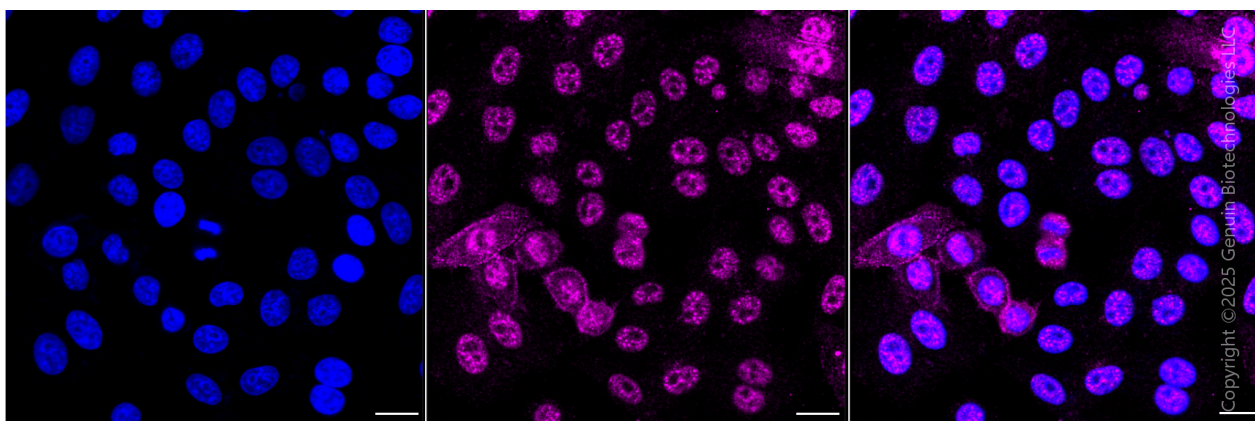
### SUPPORT

SUPPORT@GENUINBIOTECH.COM  
TEL: +1-540-855-7041

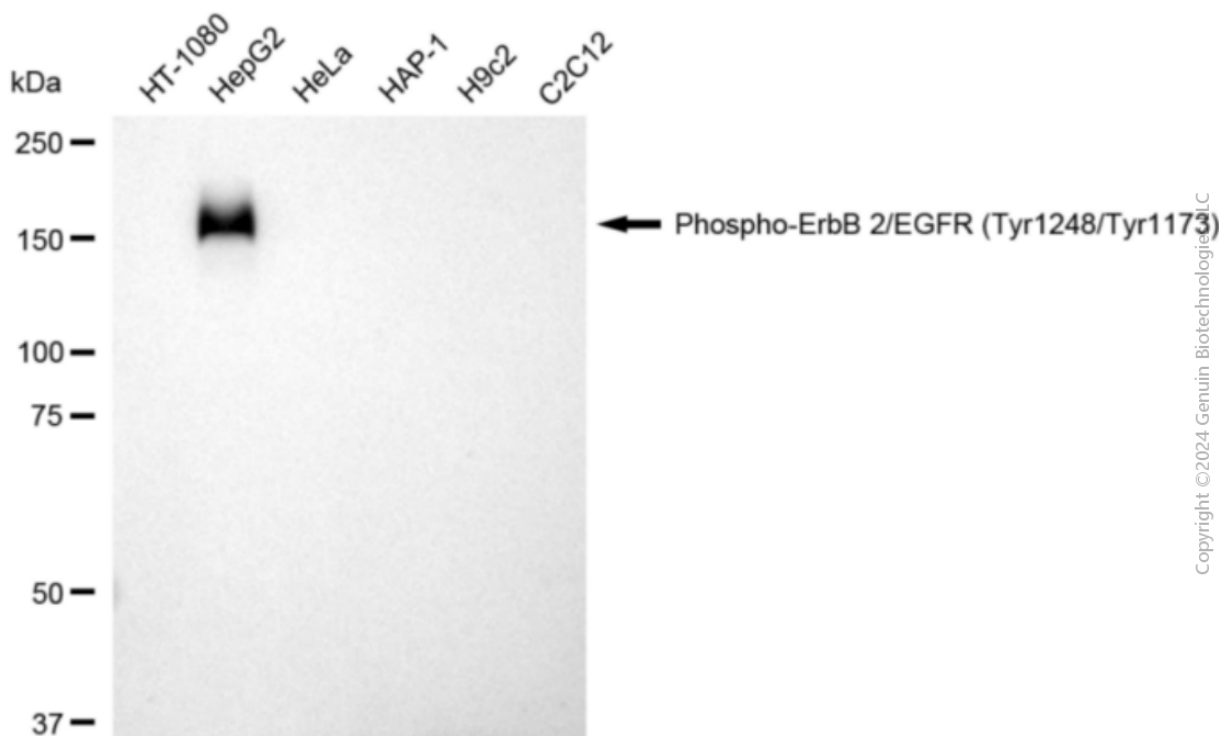
### ORDERS

SALES@GENUINBIOTECH.COM  
FAX: +1-540-855-7041

WWW.GENUINBIOTECH.COM



Immunocytochemical staining of HepG2 cells with anti-Phospho-ErbB 2/EGFR (Tyr1248/Tyr1173) antibody (Cat#3185, 1:1,000). Nuclei were stained blue with DAPI; Phospho-ErbB 2/EGFR (Tyr1248/Tyr1173) was stained magenta with Alexa Fluor® 647. Images were taken using Leica stellaris 5. Protein abundance based on laser Intensity and smart gain: Medium. Scale bar, 20  $\mu$ m.



Western blotting analysis using anti-phospho-ErbB 2/EGFR (Tyr1248/Tyr1173) antibody (Cat#3185). Total cell lysates (30  $\mu$ g) from various cell lines were loaded and separated by SDS-PAGE. The blot was incubated with anti-phospho-ErbB 2/EGFR (Tyr1248/Tyr1173) antibody (Cat#3185, 1:5,000) and HRP-conjugated goat anti-rabbit secondary antibody (Cat#201, 1:20,000) respectively. Image was developed using NaQ™ ECL Substrate Kit (Cat#716).