

Anti-Phospho-Nrf2 (Ser40) Rabbit Monoclonal Antibody



Catalog #: 3191

Aliases

NFE2L2; NFE2 Like BZIP Transcription Factor 2; NRF2; NRF-2; Nuclear Factor Erythroid 2-Related Factor 2; Nuclear Factor, Erythroid 2 Like 2; NF-E2-Related Factor 2; HEBP1; Nuclear Factor (Erythroid-Derived 2)-Like 2; Nuclear Factor, Erythroid Derived 2, Like 2; Nuclear Factor Erythroid-Derived 2-Like 2; Nuclear Factor, Erythroid 2-Like 2; NFE2-Related Factor 2; IMDDHH; Nrf-2

Background

Gene Name: NFE2L2

NCBI Gene Entry: [4780](#)

UniProt Entry: [Q16236](#)

Application Information

Molecular Weight: Predicted, 68 kDa; observed, 100 kDa

Clonality: Rabbit monoclonal antibody

Clone ID: 24GB4445

Species Reactivity: Human, mouse

Applications Tested: Western blotting (WB), flow cytometry (FCM), immunocytochemistry (IC)

Immunogen

A synthesized peptide derived from human Phospho-Nrf2 (Ser40)

Isotype

Rabbit IgG

Storage Buffer

Supplied in PBS (pH 7.4) containing 50% glycerol, and 0.02% sodium azide.

Storage

Store at -20 °C for one year.

Recommended Dilutions

Western Blotting (WB): 1:1,000-1:5,000

Flow Cytometry (FCM): 1:2,000

Immunocytochemistry (IC): 1:100-1:1,000

SUPPORT

SUPPORT@GENUINBIOTECH.COM
TEL: +1-540-855-7041

ORDERS

SALES@GENUINBIOTECH.COM
FAX: +1-540-855-7041

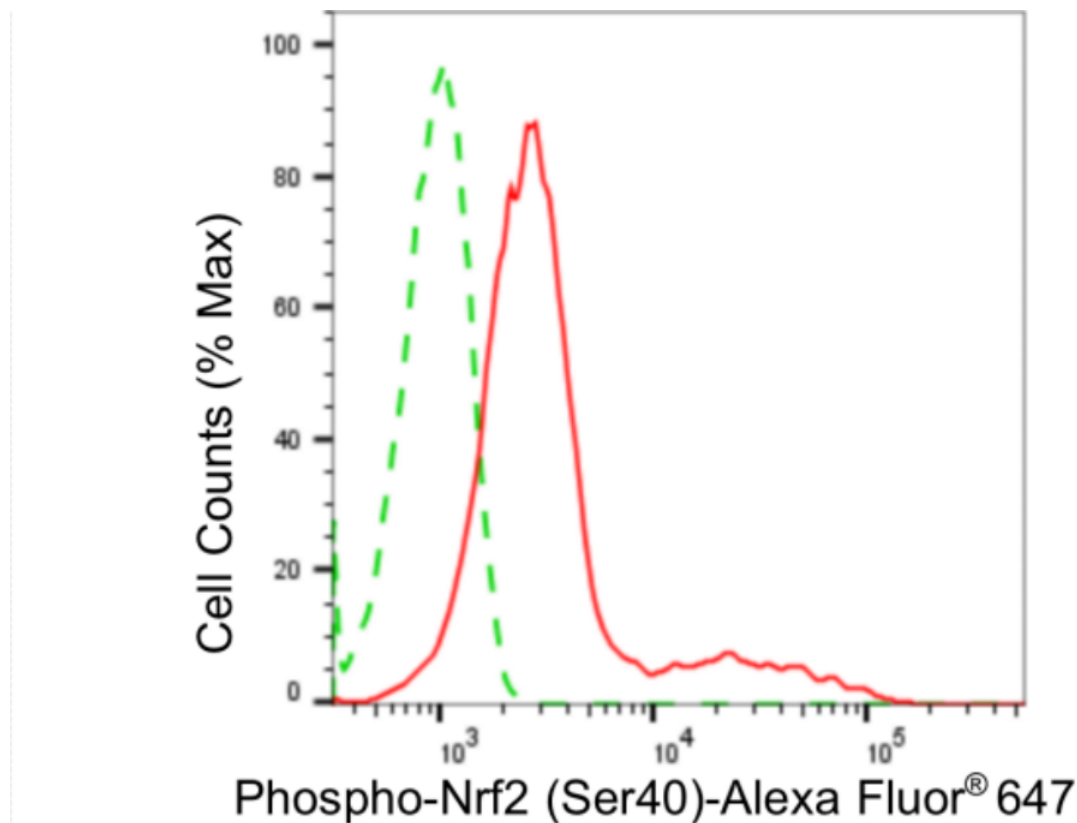
WWW.GENUINBIOTECH.COM

Anti-Phospho-Nrf2 (Ser40) Rabbit Monoclonal Antibody

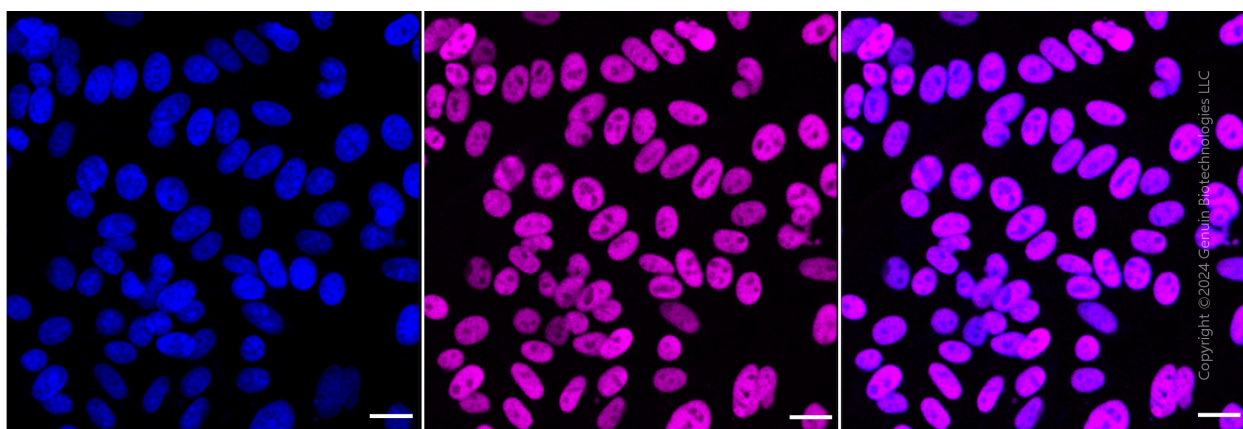
PAGE 2

Note: This product is for research use only.

Validation Data



Flow cytometric analysis of phospho-Nrf2 (Ser40) expression in HepG2 cells using anti-phospho-Nrf2 (Ser40) antibody (Cat#3191, 1:2,000). Green, isotype control; red, phospho-Nrf2 (Ser40).



Immunocytochemical staining of HepG2 cells with anti-Phospho-Nrf2 (Ser40) antibody (Cat#3191, 1:1,000). Nuclei were stained blue with DAPI; Phospho-Nrf2 (Ser40) was stained magenta with Alexa Fluor® 647. Images were taken using Leica stellaris 5. Protein abundance based on laser Intensity and smart gain: Medium. Scale bar: 20 μ m.

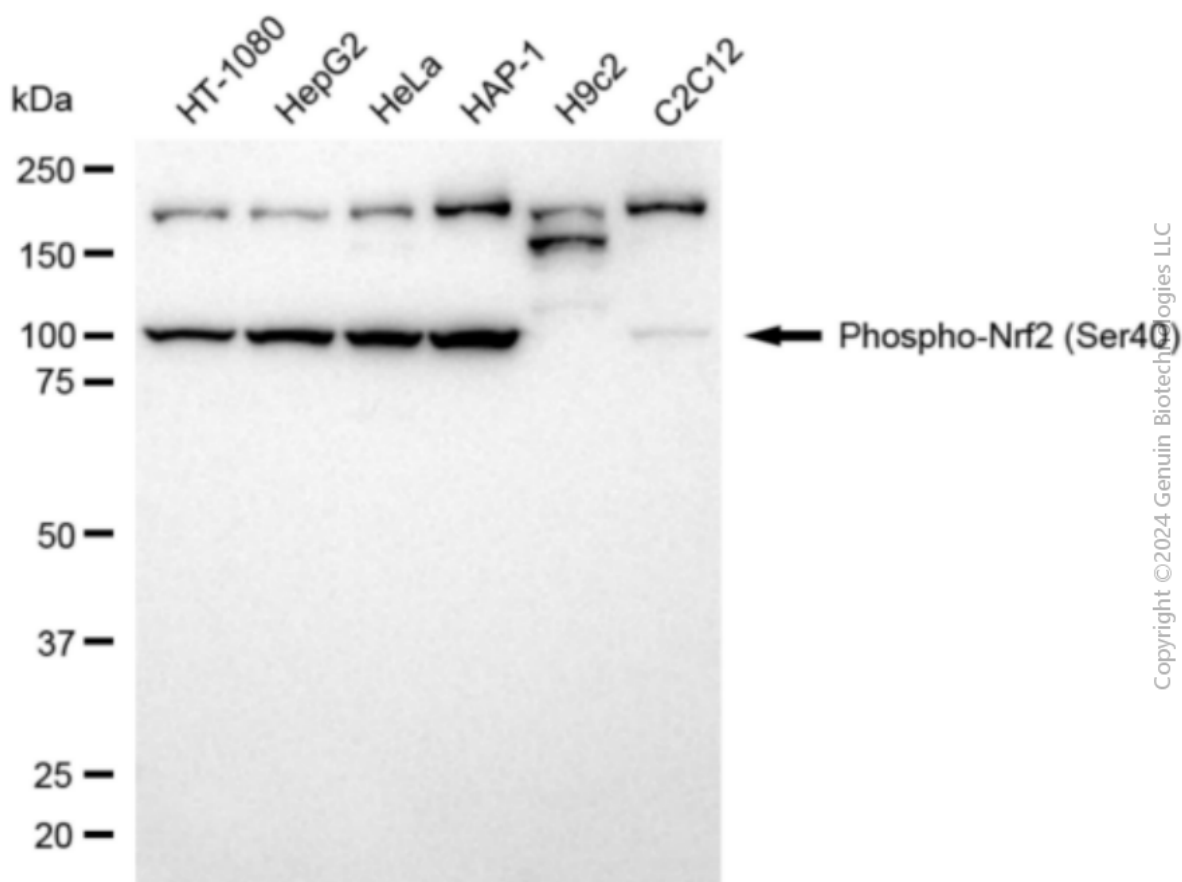
SUPPORT

SUPPORT@GENUINBIOTECH.COM
TEL: +1-540-855-7041

ORDERS

SALES@GENUINBIOTECH.COM
FAX: +1-540-855-7041

WWW.GENUINBIOTECH.COM



Western blotting analysis using anti-phospho-Nrf2 (Ser40) antibody (Cat#3191). Total cell lysates (30 µg) from various cell lines were loaded and separated by SDS-PAGE. The blot was incubated with anti-phospho-Nrf2 (Ser40) antibody (Cat#3191, 1:5,000) and HRP-conjugated goat anti-rabbit secondary antibody (Cat#201, 1:20,000) respectively. Image was developed using NaQ™ ECL Substrate Kit (Cat#716).