

## Catalog #: 3218

### Aliases

BECN1; Beclin 1; VPS30; ATG6; Coiled-Coil Myosin-Like BCL2-Interacting Protein; Beclin 1, Autophagy Related; Beclin-1; Beclin 1 (Coiled-Coil, Moesin-Like BCL2 Interacting Protein); Beclin 1 (Coiled-Coil, Moesin-Like BCL2-Interacting Protein); ATG6 Autophagy Related 6 Homolog (S. Cerevisiae); Testis Secretory Sperm-Binding Protein Li 215e; ATG6 Autophagy Related 6 Homolog; Beclin1-Gamma; Protein GT197; Beclin1-Beta; Beclin1; GT197

### Background

Gene Name: BECN1

NCBI Gene Entry: [8678](#)

UniProt Entry: [Q14457](#)

### Application Information

Molecular Weight: Predicted, 52 kDa, observed, 55 kDa

Clonality: Rabbit monoclonal antibody

Clone ID: 24GB4555

Species Reactivity: Human, mouse, rat

Applications Tested: Western blotting (WB), immunocytochemistry (IC), flow cytometry (FCM)

### Immunogen

A synthesized peptide derived from human Beclin 1

### Isotype

Rabbit IgG

### Storage Buffer

Supplied in PBS (pH 7.4) containing 50% glycerol, and 0.02% sodium azide.

### Storage

Store at -20 °C for one year.

### Recommended Dilutions

Western Blotting (WB): 1:1,000-1:5,000

Immunocytochemistry (IC): 1:100-1:1,000

Flow Cytometry (FCM): 1:2,000

---

#### SUPPORT

SUPPORT@GENUINBIOTECH.COM  
TEL: +1-540-855-7041

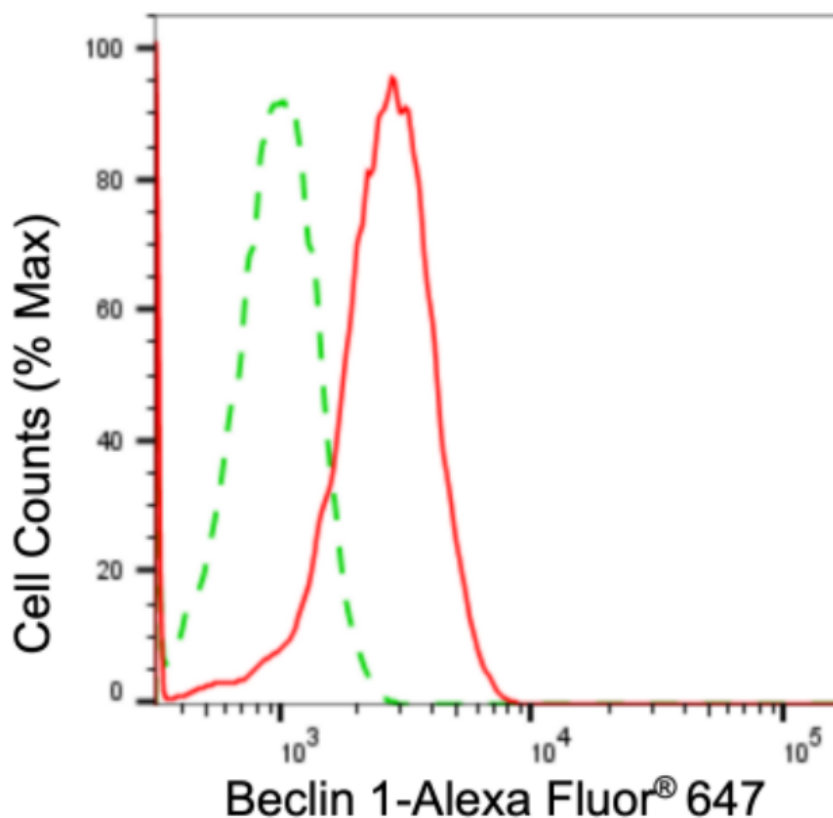
#### ORDERS

SALES@GENUINBIOTECH.COM  
FAX: +1-540-855-7041

#### WWW.GENUINBIOTECH.COM

**Note:** This product is for research use only.

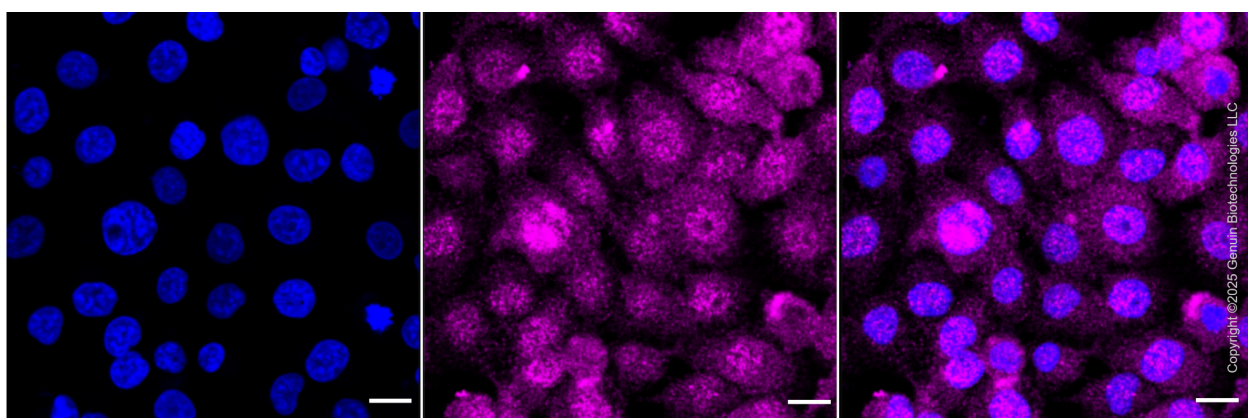
## Validation Data



Copyright ©2024 Genuin Biotechnologies LLC

**Figure 2.** Flow cytometric analysis of beclin 1 expression in HT-1080 cells using anti-beclin 1 antibody (Cat#3218, 1:2,000). Green, isotype control; red, beclin 1.

Flow cytometric analysis of beclin 1 expression in HT-1080 cells using anti-beclin 1 antibody (Cat#3218, 1:2,000). Green, isotype control; red, beclin 1.



Copyright ©2025 Genuin Biotechnologies LLC

Immunocytochemical staining of HT-1080 cells with anti-Beclin 1 antibody (Cat#3218, 1:1,000) . Nuclei were stained blue with DAPI; Beclin 1 was stained magenta with Alexa Fluor® 647. Images were taken using Leica stellaris 5. Protein abundance based on laser Intensity and smart

### SUPPORT

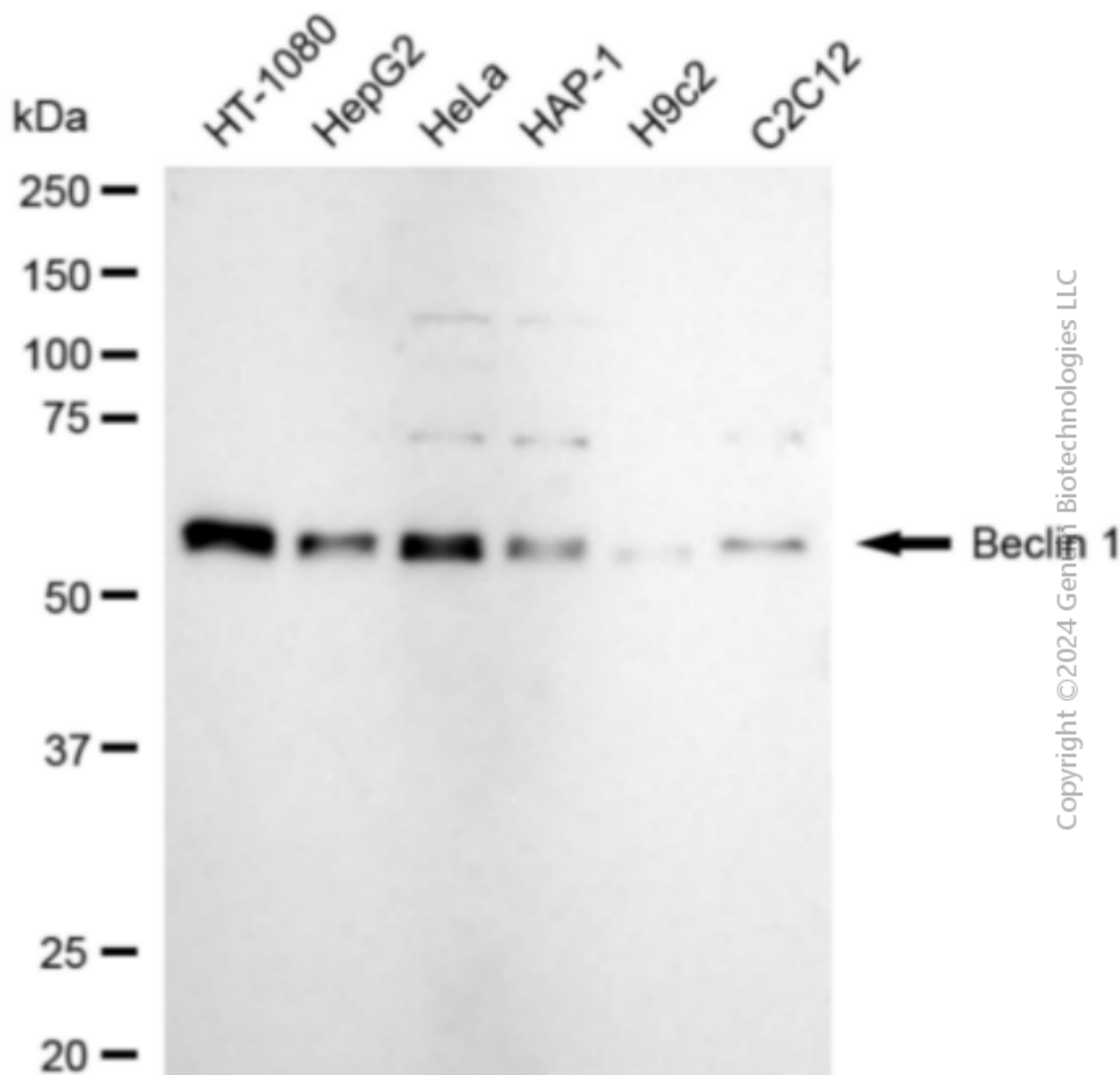
SUPPORT@GENUINBIOTECH.COM  
TEL: +1-540-855-7041

### ORDERS

SALES@GENUINBIOTECH.COM  
FAX: +1-540-855-7041

[WWW.GENUINBIOTECH.COM](http://WWW.GENUINBIOTECH.COM)

gain: Medium. Scale bar: 20  $\mu$ m.



Copyright © 2024 Genium Biotechnologies LLC

Western blotting analysis using anti-beclin 1 antibody (Cat#3218). Total cell lysates (30  $\mu$ g) from various cell lines were loaded and separated by SDS-PAGE. The blot was incubated with anti-beclin 1 antibody (Cat#3218, 1:5,000) and HRP-conjugated goat anti-rabbit secondary antibody (Cat#201, 1:20,000) respectively. Image was developed using NaQ™ ECL Substrate Kit (Cat#716).