

# Anti-Checkpoint Kinase 2 Rabbit Monoclonal Antibody



**Catalog #: 3225**

## Aliases

CHEK2; Checkpoint Kinase 2; CDS1; CHK2; PP1425; RAD53; Serine/Threonine-Protein Kinase Chk2; CHK2 Checkpoint Homolog; Cds1 Homolog; BA444G7; HuCds1; HCds1; CHK2 (Checkpoint, S.Pombe) Homolog; CHK2 Checkpoint Homolog (S. Pombe); Checkpoint-Like Protein CHK2; EC 2.7.11.1; EC 2.7.11 48; HUCDS1; Hucds1; LFS2

## Background

Gene Name: CHEK2

NCBI Gene Entry: [11200](#)

UniProt Entry: [O96017](#)

## Application Information

Molecular Weight: Predicted, 61 kDa; observed, 61 kDa

Clonality: Rabbit monoclonal antibody

Clone ID: 24GB4590

Species Reactivity: Human

Applications Tested: Western blotting (WB), flow cytometry (FCM), immunocytochemistry (IC)

## Immunogen

Recombinant protein of human Chk2

## Isotype

Rabbit IgG

## Storage Buffer

Supplied in PBS (pH 7.4) containing 50% glycerol, and 0.02% sodium azide.

## Storage

Store at -20 °C for one year.

## Recommended Dilutions

Western Blotting (WB): 1:1,000-1:5,000

Flow Cytometry (FCM): 1:2,000

Immunocytochemistry (IC): 1:100-1:1,000

---

### SUPPORT

SUPPORT@GENUINBIOTECH.COM  
TEL: +1-540-855-7041

### ORDERS

SALES@GENUINBIOTECH.COM  
FAX: +1-540-855-7041

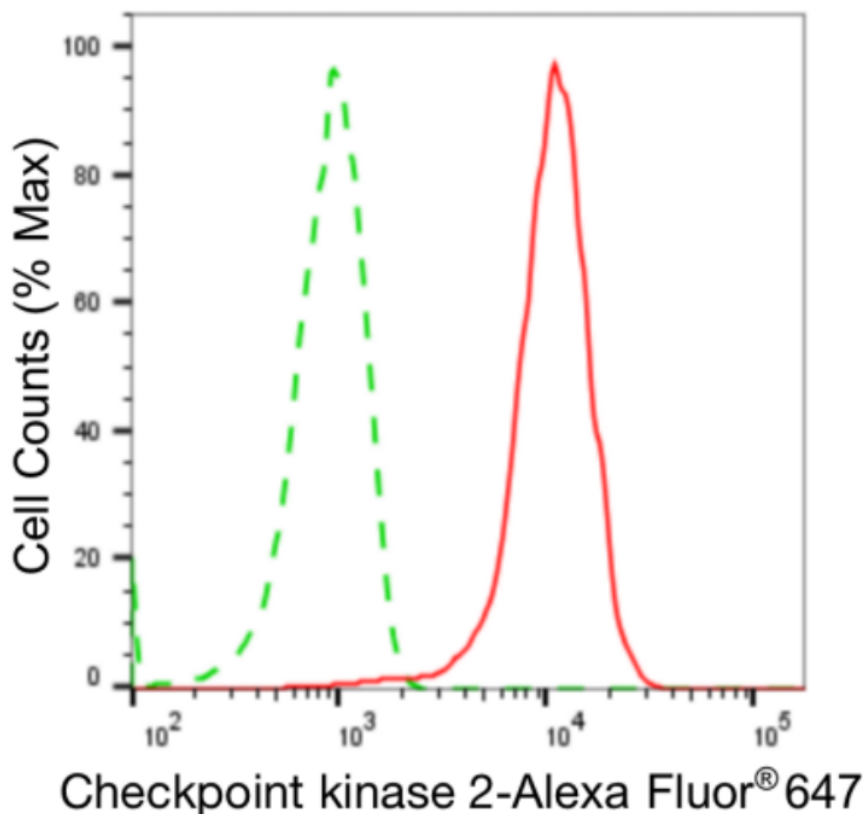
[WWW.GENUINBIOTECH.COM](http://WWW.GENUINBIOTECH.COM)

# Anti-Checkpoint Kinase 2 Rabbit Monoclonal Antibody

PAGE 2

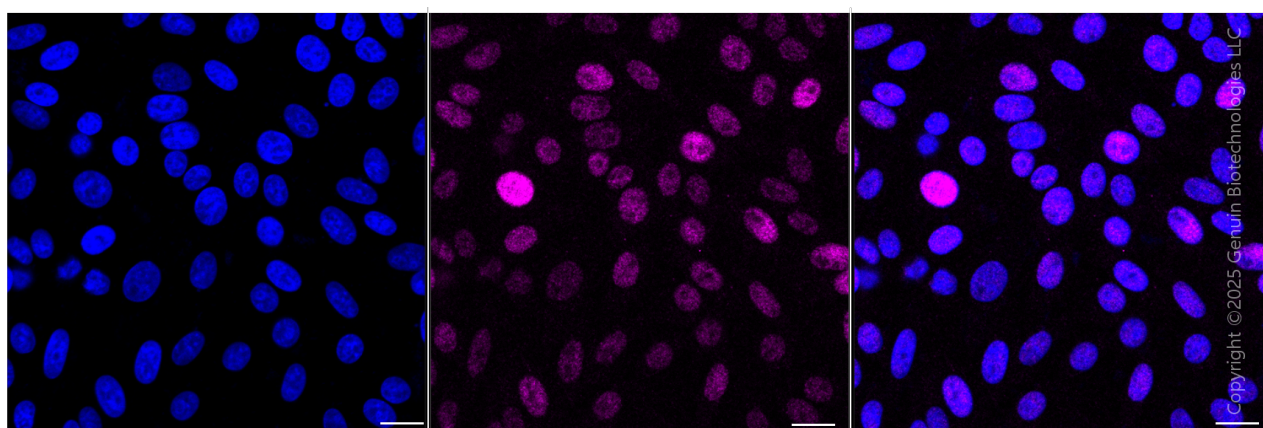
**Note:** This product is for research use only.

## Validation Data



Copyright ©2024 Genuin Biotechnologies LLC

Flow cytometric analysis of Checkpoint kinase 2 expression in HepG2 cells using anti-Checkpoint kinase 2 antibody (Cat#3225, 1:2,000). Green, isotype control; red, Checkpoint kinase 2.



Copyright ©2025 Genuin Biotechnologies LLC

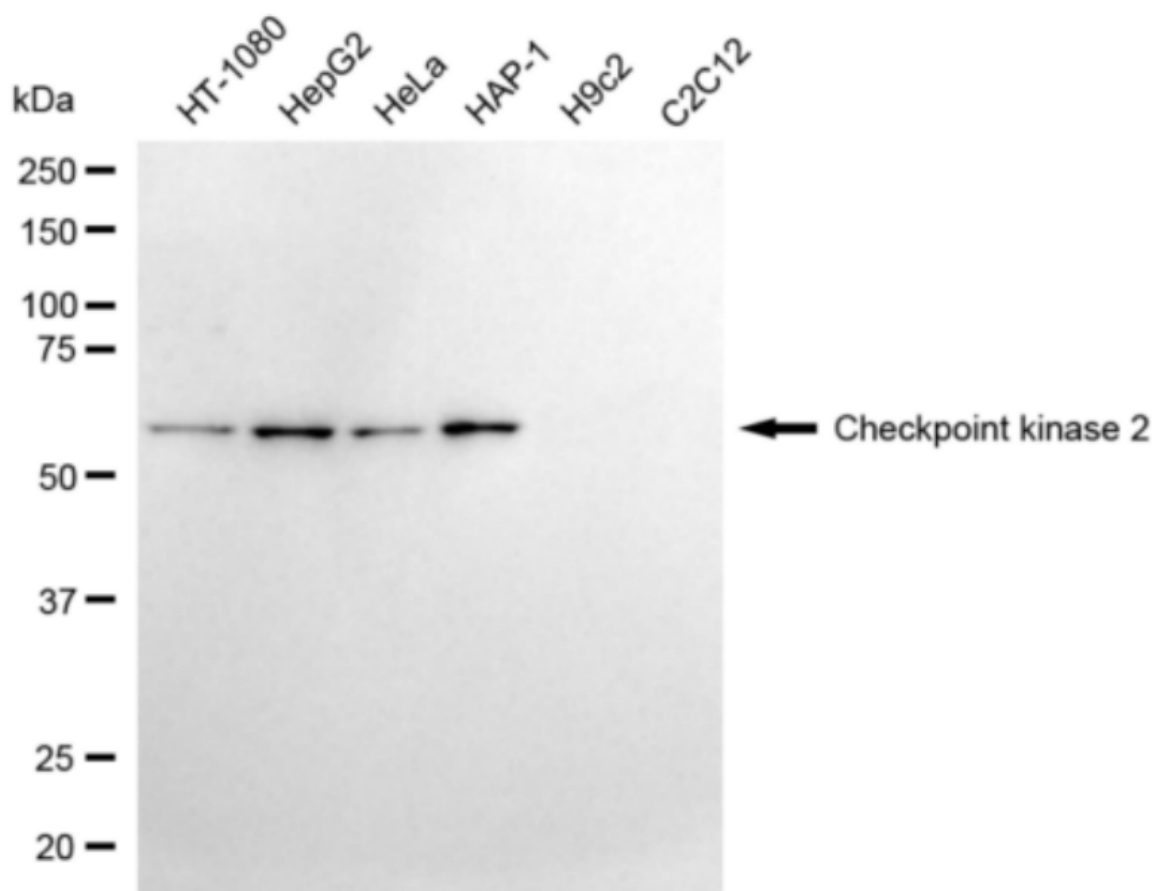
### SUPPORT

SUPPORT@GENUINBIOTECH.COM  
TEL: +1-540-855-7041

### ORDERS

SALES@GENUINBIOTECH.COM  
FAX: +1-540-855-7041

WWW.GENUINBIOTECH.COM



Copyright ©2024 Genuin Biotechnologies LLC

Western blotting analysis using anti-checkpoint kinase 2 antibody (Cat#3225). Total cell lysates (30 µg) from various cell lines were loaded and separated by SDS-PAGE. The blot was incubated with anti-checkpoint kinase 2 antibody (Cat#3225, 1:5,000) and HRP-conjugated goat anti-rabbit secondary antibody (Cat#201, 1:20,000) respectively. Image was developed using NaQ™ ECL Substrate Kit (Cat#716).