

Anti-Phospho-STAT3 (Ser727) Rabbit Monoclonal Antibody



Catalog #: 3232

Aliases

STAT3; Signal Transducer And Activator Of Transcription 3; APRF; Acute-Phase Response Factor; Signal Transducer And Activator Of Transcription 3 (Acute-Phase Response Factor); DNA-Binding Protein APRF; ADMIO1; ADMIO; HIES

Background

Gene Name: STAT3

NCBI Gene Entry: [6774](#)

UniProt Entry: [P40763](#)

Application Information

Molecular Weight: Predicted, 88 kDa; observed, 88 kDa

Clonality: Rabbit monoclonal antibody

Clone ID: 24GB4625

Species Reactivity: Human, mouse, rat

Applications Tested: Western blotting (WB), flow cytometry (FCM), immunocytochemistry (IC)

Immunogen

A synthesized peptide derived from human Phospho-STAT3 (Ser727)

Isotype

Rabbit IgG

Storage Buffer

Supplied in PBS (pH 7.4) containing 50% glycerol, and 0.02% sodium azide.

Storage

Store at -20 °C for one year.

Recommended Dilutions

Western Blotting (WB): 1:1,000-1:5,000

Flow Cytometry (FCM): 1:2,000

Immunocytochemistry (IC): 1:100-1:1,000

Note: This product is for research use only.

SUPPORT

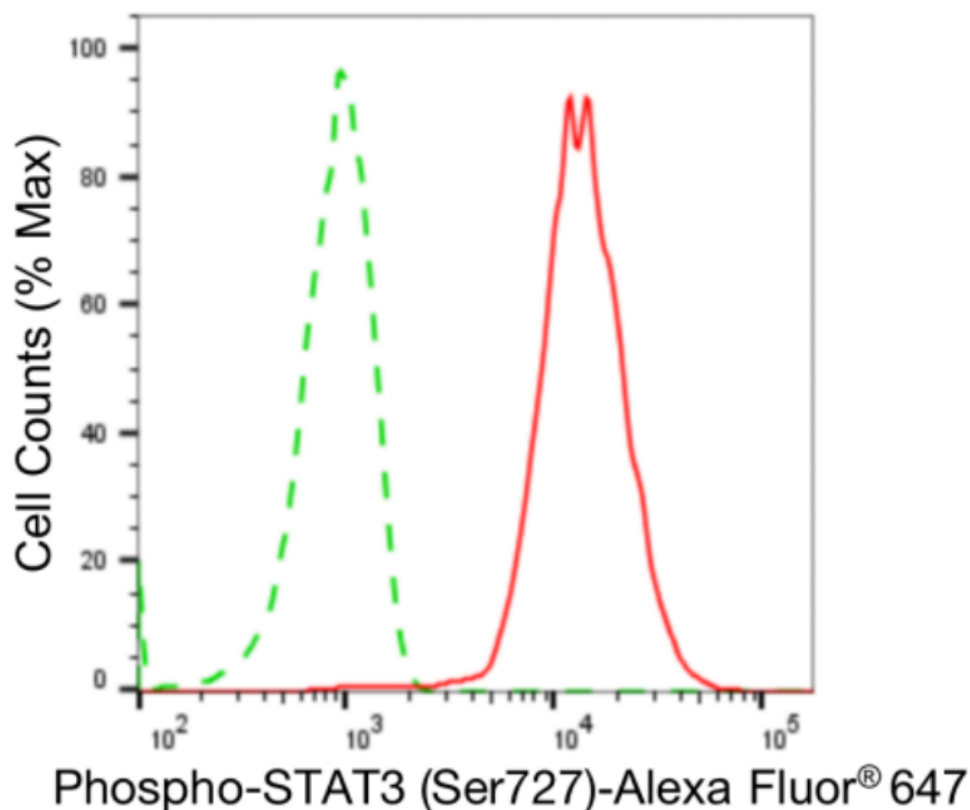
SUPPORT@GENUINBIOTECH.COM
TEL: +1-540-855-7041

ORDERS

SALES@GENUINBIOTECH.COM
FAX: +1-540-855-7041

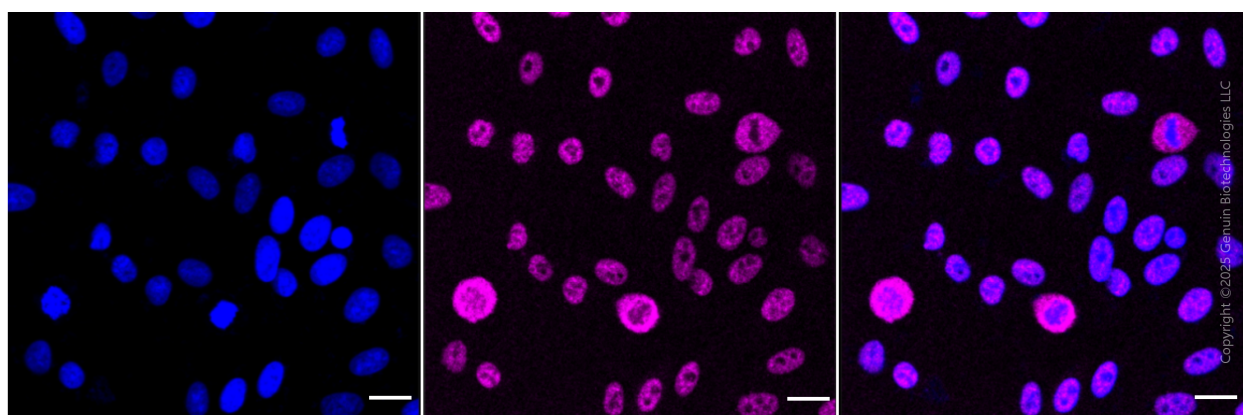
WWW.GENUINBIOTECH.COM

Validation Data



Copyright ©2024 Genuin Biotechnologies LLC

Flow cytometric analysis of Phospho-STAT3 (Ser727) expression in HepG2 cells using anti-Phospho-STAT3 (Ser727) antibody (Cat#3232, 1:2,000). Green, isotype control; red, Phospho-STAT3 (Ser727).



Immunocytochemical staining of HepG2 cells with anti-phospho-STAT3 (Ser727) antibody (Cat#3232, 1:1,000). Nuclei were stained blue with DAPI; Phospho-STAT3 (Ser727) was stained magenta with Alexa Fluor® 647. Images were taken using Leica stellaris 5. Protein abundance based on laser Intensity and smart gain: Medium. Scale bar: 20 μ m.

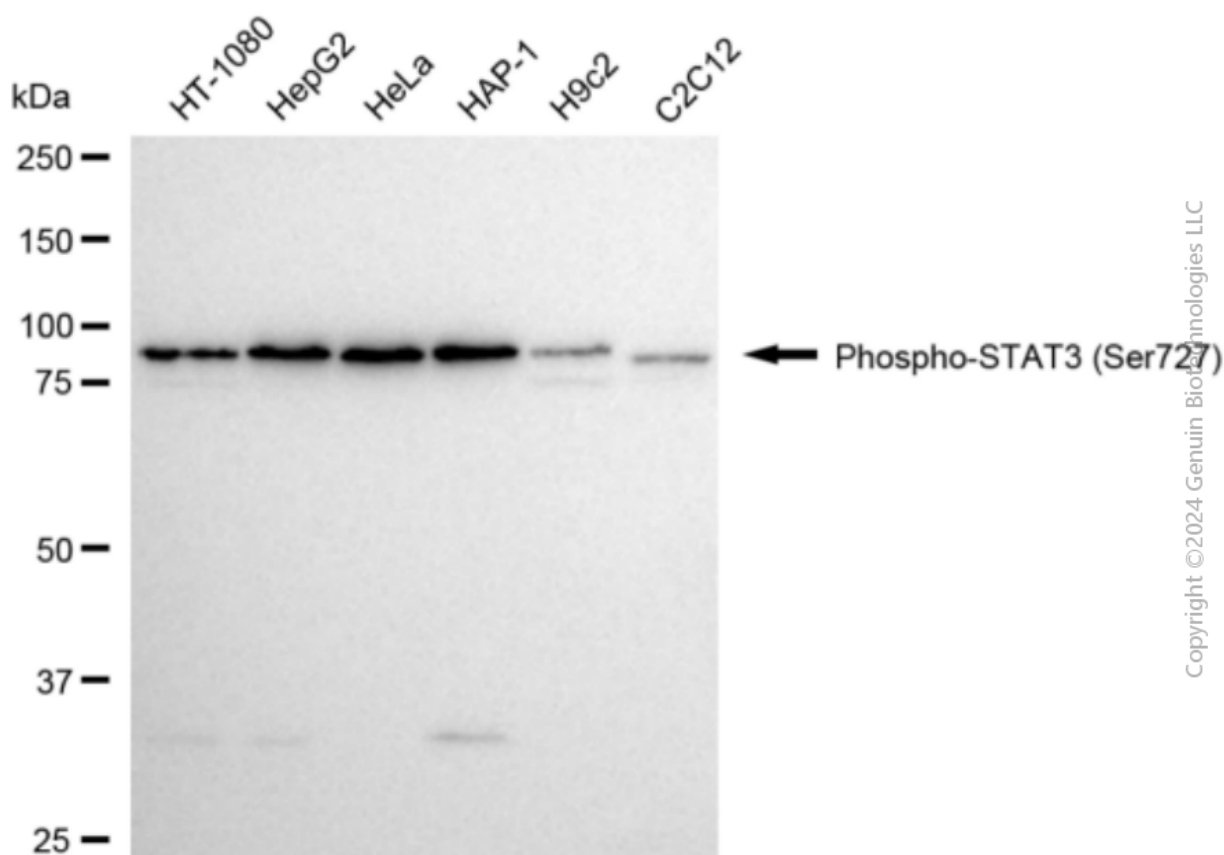
SUPPORT

SUPPORT@GENUINBIOTECH.COM
TEL: +1-540-855-7041

ORDERS

SALES@GENUINBIOTECH.COM
FAX: +1-540-855-7041

WWW.GENUINBIOTECH.COM



Copyright ©2024 Genuin Biotechnologies LLC

Western blotting analysis using anti-phospho-STAT3 (Ser727) antibody (Cat#3232). Total cell lysates (30 µg) from various cell lines were loaded and separated by SDS-PAGE. The blot was incubated with anti-phospho-STAT3 (Ser727) antibody (Cat#3232, 1:5,000) and HRP-conjugated goat anti-rabbit secondary antibody (Cat#201, 1:20,000) respectively. Image was developed using NaQ™ ECL Substrate Kit (Cat#716).