

Anti-Angiotensin Converting Enzyme 2 Rabbit Monoclonal Antibody



Catalog #: 3243

Aliases

ACE2; Angiotensin Converting Enzyme 2; ACEH; Angiotensin I Converting Enzyme(Peptidyl-Dipeptidase A) 2; Angiotensin-Converting Enzyme-Related Carboxypeptidase; Angiotensin-Converting Enzyme Homolog; Angiotensin I Converting Enzyme 2; Angiotensin-Converting Enzyme 2; ACE-Related Carboxypeptidase; Metalloprotease MPROT15; Peptidyl-Dipeptidase A; EC 3.4.17.23; EC 3.4.17.-; EC 3.4.17

Background

Gene Name: ACE2

NCBI Gene Entry: [59272](#)

UniProt Entry: [Q9BYF1](#)

Application Information

Molecular Weight: Predicted, 92 kDa; observed, 120 kDa

Clonality: Rabbit monoclonal antibody

Clone ID: 24GB4675

Species Reactivity: Human, mouse, rat

Applications Tested: Western blotting (WB)

Immunogen

A synthesized peptide derived from human ACE2

Isotype

Rabbit IgG

Storage Buffer

Supplied in PBS (pH 7.4) containing 50% glycerol, and 0.02% sodium azide.

Storage

Store at -20 °C for one year.

Recommended Dilutions

Western Blotting (WB): 1:1,000-1:5,000

Note: This product is for research use only.

SUPPORT

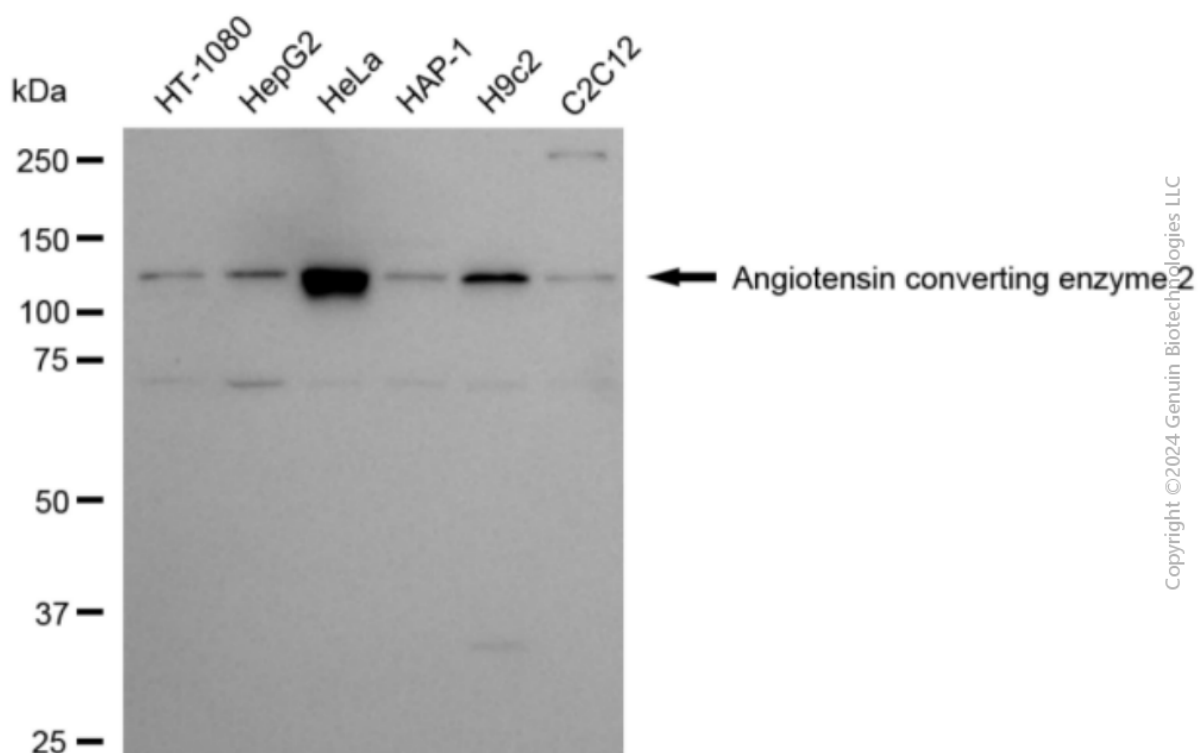
SUPPORT@GENUINBIOTECH.COM
TEL: +1-540-855-7041

ORDERS

SALES@GENUINBIOTECH.COM
FAX: +1-540-855-7041

WWW.GENUINBIOTECH.COM

Validation Data



Western blotting analysis using anti-angiotensin converting enzyme 2 antibody (Cat#3243). Total cell lysates (30 µg) from various cell lines were loaded and separated by SDS-PAGE. The blot was incubated with anti-angiotensin converting enzyme 2 antibody (Cat#3243, 1:5,000) and HRP-conjugated goat anti-rabbit secondary antibody (Cat#201, 1:20,000) respectively. Image was developed using NaQ™ ECL Substrate Kit (Cat#716).