

# Anti-Actinin Alpha 3 Rabbit Monoclonal Antibody



**Catalog #: 3245**

## Aliases

ACTN3; Actinin Alpha 3; F-Actin Cross-Linking Protein; Alpha-Actinin-3; Alpha-Actinin Skeletal Muscle Isoform; Actinin Alpha 3 (Gene/Pseudogene); Alpha-Actinin Skeletal Muscle; Actinin, Alpha 3; ACTN3D

## Background

Gene Name: ACTN3

NCBI Gene Entry: [89](#)

UniProt Entry: [Q08043](#)

## Application Information

Molecular Weight: Predicted, 103 kDa; observed, 103 kDa

Clonality: Rabbit monoclonal antibody

Clone ID: 24GB4680

Species Reactivity: Mouse

Applications Tested: Western blotting (WB), immunocytochemistry (IC)

## Immunogen

A synthesized peptide derived from human ACTN3

## Isotype

Rabbit IgG

## Storage Buffer

Supplied in PBS (pH 7.4) containing 50% glycerol, and 0.02% sodium azide.

## Storage

Store at -20 °C for one year.

## Recommended Dilutions

Western Blotting (WB): 1:1,000-1:5,000

Immunocytochemistry (IC): 1:100-1:1,000

**Note:** This product is for research use only.

## Validation Data

---

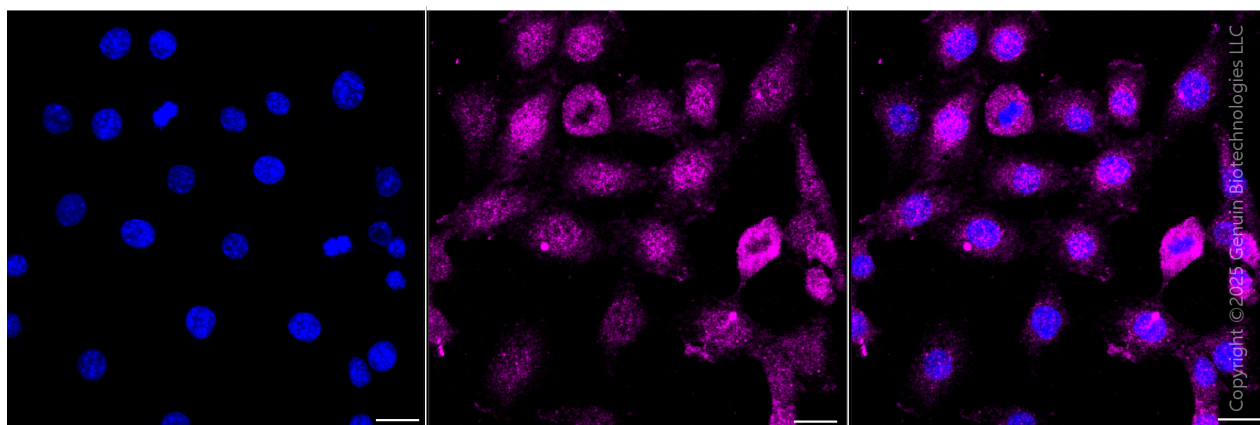
### SUPPORT

SUPPORT@GENUINBIOTECH.COM  
TEL: +1-540-855-7041

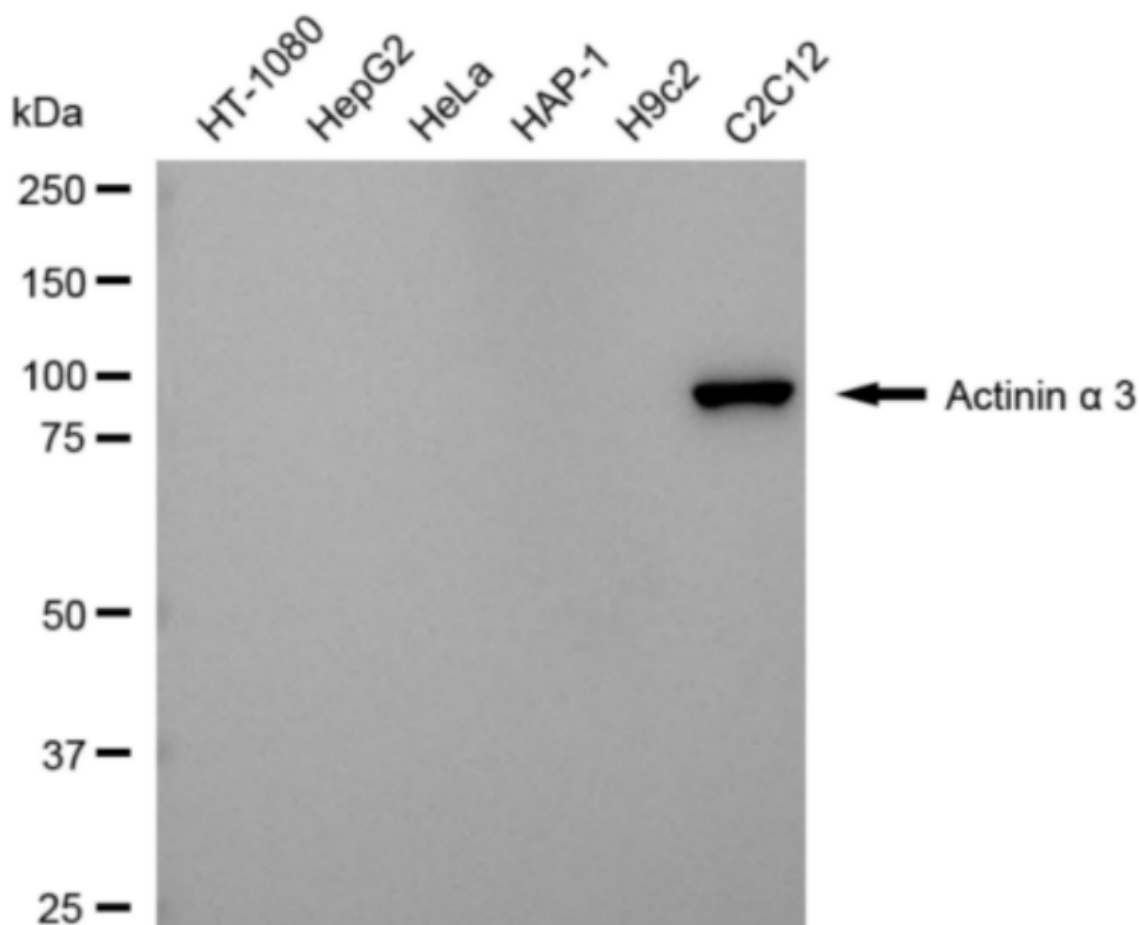
### ORDERS

SALES@GENUINBIOTECH.COM  
FAX: +1-540-855-7041

[WWW.GENUINBIOTECH.COM](http://WWW.GENUINBIOTECH.COM)



Immunocytochemical staining of C2C12 cells with anti-Actinin alpha 3 antibody (Cat#3245, 1:1,000). Nuclei were stained blue with DAPI; Actinin alpha 3 was stained magenta with Alexa Fluor® 647. Images were taken using Leica stellaris 5. Protein abundance based on laser Intensity and Smart Gain:Low. Scale bar, 20  $\mu$ m.



Western blotting analysis using anti-actinin alpha 3 antibody (Cat#3245). Total cell lysates (30  $\mu$ g)

## SUPPORT

SUPPORT@GENUINBIOTECH.COM  
TEL: +1-540-855-7041

## ORDERS

SALES@GENUINBIOTECH.COM  
FAX: +1-540-855-7041

[WWW.GENUINBIOTECH.COM](http://WWW.GENUINBIOTECH.COM)

## **Anti-Actinin Alpha 3 Rabbit Monoclonal Antibody**

PAGE 3

from various cell lines were loaded and separated by SDS-PAGE. The blot was incubated with anti-actinin alpha 3 antibody (Cat#3245, 1:5,000) and HRP-conjugated goat anti-rabbit secondary antibody (Cat#201, 1:20,000) respectively. Image was developed using NaQ™ ECL Substrate Kit (Cat#716).

---

### **SUPPORT**

SUPPORT@GENUINBIOTECH.COM  
TEL: +1-540-855-7041

### **ORDERS**

SALES@GENUINBIOTECH.COM  
FAX: +1-540-855-7041

**WWW.GENUINBIOTECH.COM**