

Anti-Activin A Receptor Type 2B Rabbit Monoclonal Antibody



Catalog #: 3247

Aliases

ACVR2B; Activin A Receptor Type 2B; ActR-IIB; Activin A Receptor, Type IIB; Activin Receptor Type-2B; EC 2.7.11.30; Activin Receptor Type IIB; EC 2.7.11; ACTR-IIB; ACTRIIB; HTX4

Background

Gene Name: ACVR2B

NCBI Gene Entry: [93](#)

UniProt Entry: [Q13705](#)

Application Information

Molecular Weight: Predicted, 58 kDa; observed, 60 kDa

Clonality: Rabbit monoclonal antibody

Clone ID: 24GB4690

Species Reactivity: Human, mouse, rat

Applications Tested: Western blotting (WB), immunocytochemistry (IC)

Immunogen

A synthesized peptide derived from human Activin Receptor Type IIB/ACVR2B

Isotype

Rabbit IgG

Storage Buffer

Supplied in PBS (pH 7.4) containing 50% glycerol, and 0.02% sodium azide.

Storage

Store at -20 °C for one year.

Recommended Dilutions

Western Blotting (WB): 1:1,000-1:5,000

Immunocytochemistry (IC): 1:100-1:1,000

Note: This product is for research use only.

Validation Data

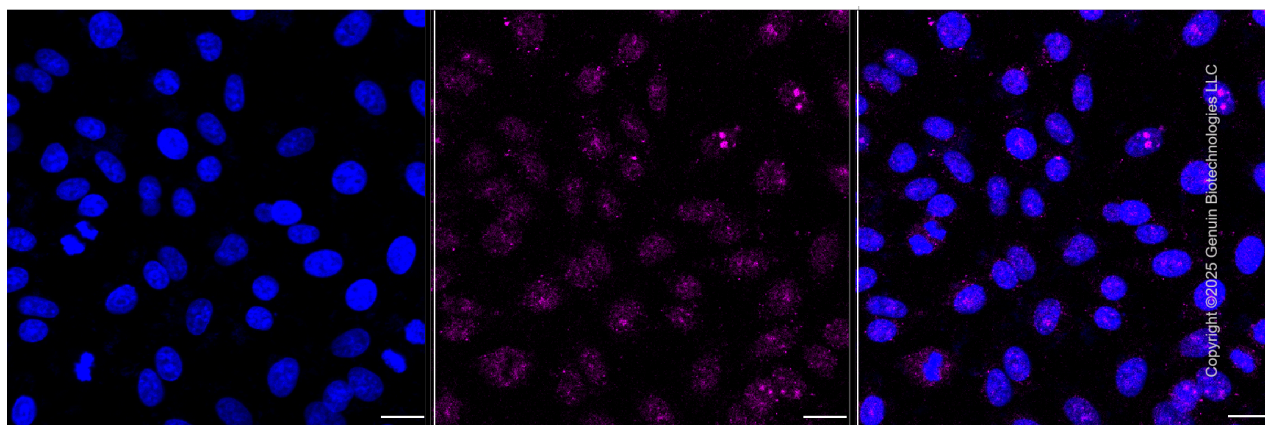
SUPPORT

SUPPORT@GENUINBIOTECH.COM
TEL: +1-540-855-7041

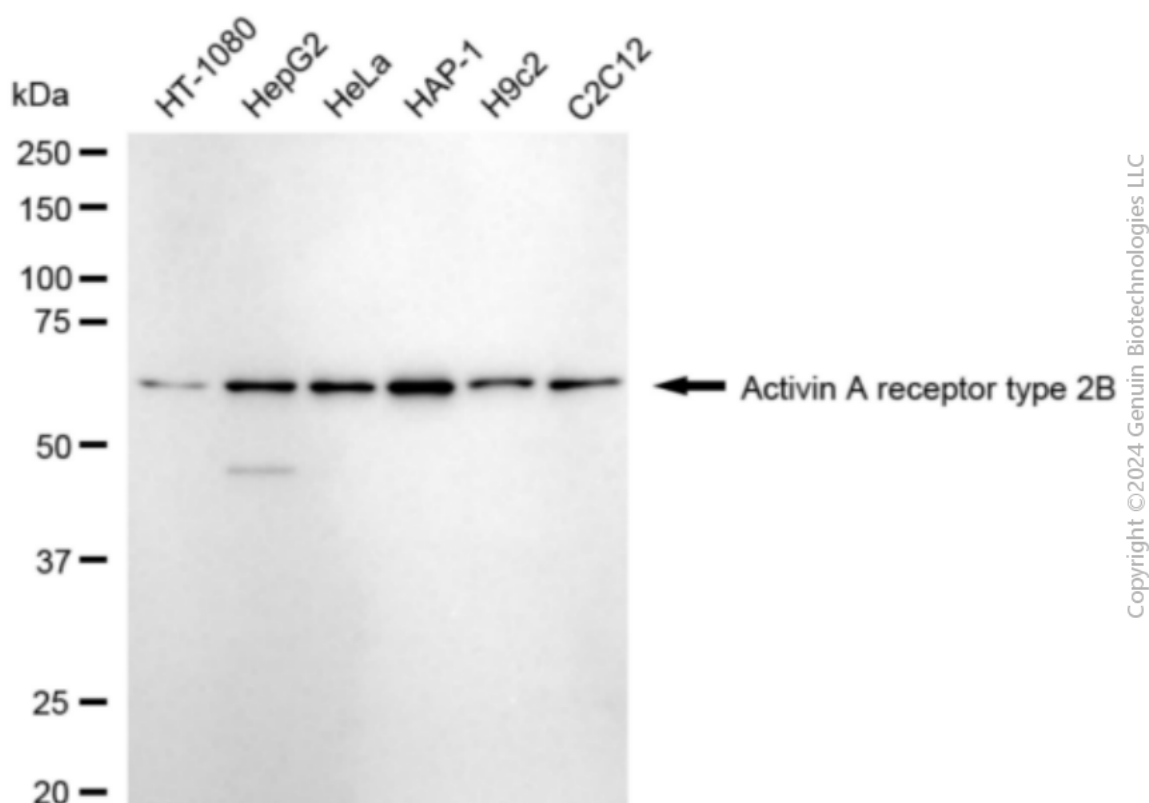
ORDERS

SALES@GENUINBIOTECH.COM
FAX: +1-540-855-7041

WWW.GENUINBIOTECH.COM



Immunocytochemical staining of HepG2 cells with anti-activin A receptor type 2B antibody (Cat#3247, 1:1,000). Nuclei were stained blue with DAPI; Activin A receptor type 2B was stained magenta with Alexa Fluor® 647. Images were taken using Leica stellaris 5. Protein abundance based on laser Intensity and smart gain: Low. Scale bar: 20 µm.



Western blotting analysis using anti-activin A receptor type 2B antibody (Cat#3247). Total cell lysates (30 µg) from various cell lines were loaded and separated by SDS-PAGE. The blot was incubated with anti-activin A receptor type 2B antibody (Cat#3247, 1:5,000) and HRP-conjugated goat anti-rabbit secondary antibody (Cat#201, 1:20,000) respectively. Image was developed using

SUPPORT

SUPPORT@GENUINBIOTECH.COM
TEL: +1-540-855-7041

ORDERS

SALES@GENUINBIOTECH.COM
FAX: +1-540-855-7041

WWW.GENUINBIOTECH.COM

Anti-Activin A Receptor Type 2B Rabbit Monoclonal Antibody

PAGE 3

NaQ™ ECL Substrate Kit (Cat#716).

SUPPORT

SUPPORT@GENUINBIOTECH.COM
TEL: +1-540-855-7041

ORDERS

SALES@GENUINBIOTECH.COM
FAX: +1-540-855-7041

WWW.GENUINBIOTECH.COM