

Catalog #: 3248

Aliases

ADH5; Alcohol Dehydrogenase 5 (Class III), Chi Polypeptide; ADHX; ADH-3; GSNOR; FDH; Glutathione-Dependent Formaldehyde Dehydrogenase; S(Hydroxymethyl)Glutathione Dehydrogenase; Alcohol Dehydrogenase Class Chi Chain; Alcohol Dehydrogenase Class-III; S-Nitrosoglutathione Reductase; Alcohol Dehydrogenase Class-3; Formaldehyde Dehydrogenase; EC 1.1.1.1; GSH-FDH; FALDH; Alcohol Dehydrogenase (Class III), Chi Polypeptide; Epididymis Secretory Sperm Binding Protein Li 60p; Alcohol Dehydrogenase 5; EC 1.1.1.284; EC 1.1.1.-; HEL-S-60p; EC 1.1.1; AMEDS; BMFS7

Background

Gene Name: ADH5

NCBI Gene Entry: [128](#)

UniProt Entry: [P11766](#)

Application Information

Molecular Weight: Predicted, 40 kDa; observed, 38 kDa

Clonality: Rabbit monoclonal antibody

Clone ID: 24GB4695

Species Reactivity: Human, mouse, rat

Applications Tested: Western blotting (WB), immunocytochemistry (IC), flow cytometry (FCM)

Immunogen

A synthesized peptide derived from human ADH5

Isotype

Rabbit IgG

Storage Buffer

Supplied in PBS (pH 7.4) containing 50% glycerol, and 0.02% sodium azide.

Storage

Store at -20 °C for one year.

Recommended Dilutions

Western Blotting (WB): 1:1,000-1:5,000

Immunocytochemistry (IC): 1:100-1:1,000

SUPPORT

SUPPORT@GENUINBIOTECH.COM
TEL: +1-540-855-7041

ORDERS

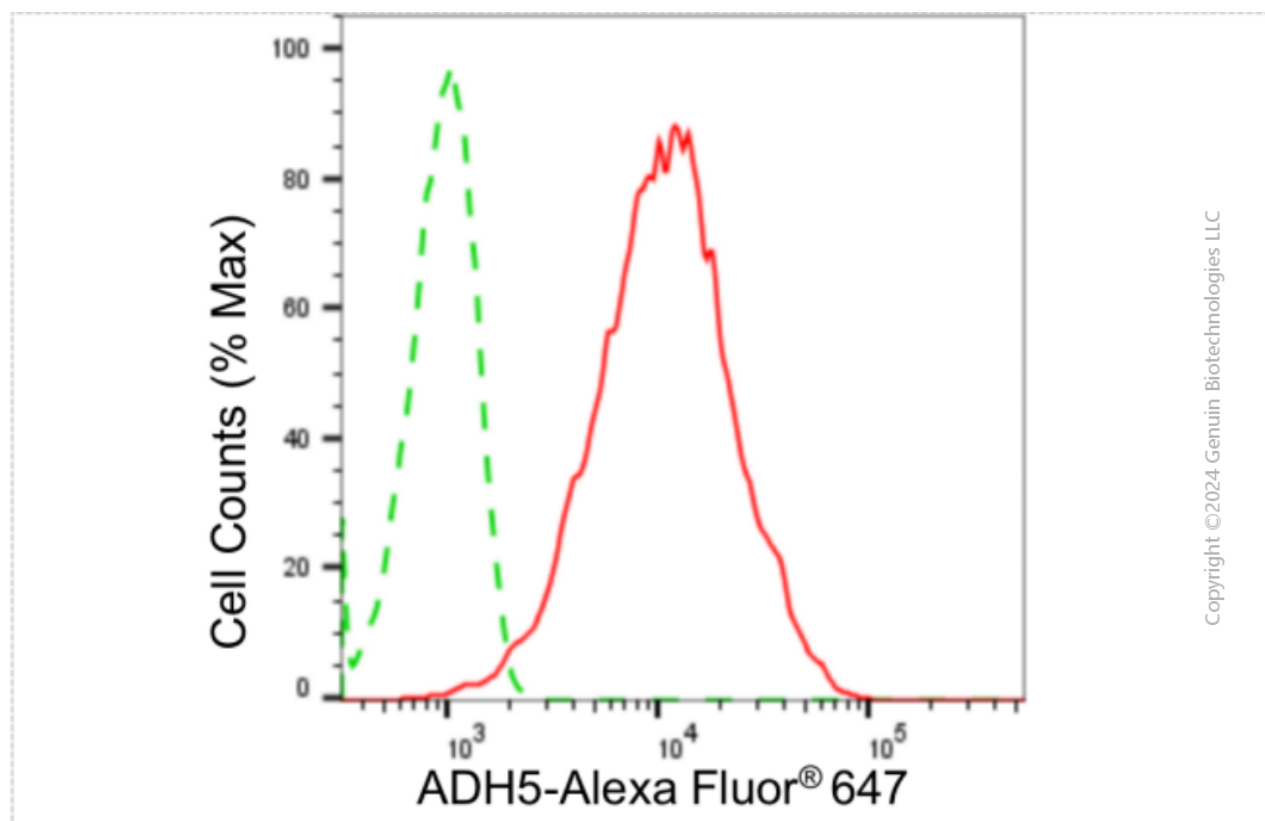
SALES@GENUINBIOTECH.COM
FAX: +1-540-855-7041

WWW.GENUINBIOTECH.COM

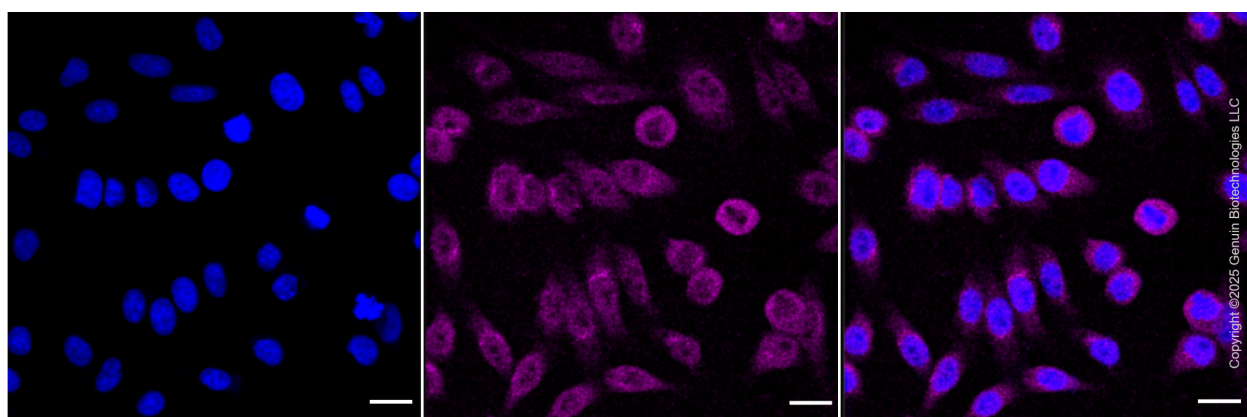
Flow Cytometry (FCM): 1:2,000

Note: This product is for research use only.

Validation Data



Flow cytometric analysis of ADH5 expression in HepG2 cells using anti-ADH5 antibody (Cat#3248, 1:2,000). Green, isotype control; red, ADH5.



Immunocytochemical staining of HepG2 cells with anti-ADH5 antibody (Cat#3248, 1:1,000). Nuclei were stained blue with DAPI; ADH5 was stained magenta with Alexa Fluor® 647. Images were taken using Leica stellaris 5. Protein abundance based on laser Intensity and smart gain:

SUPPORT

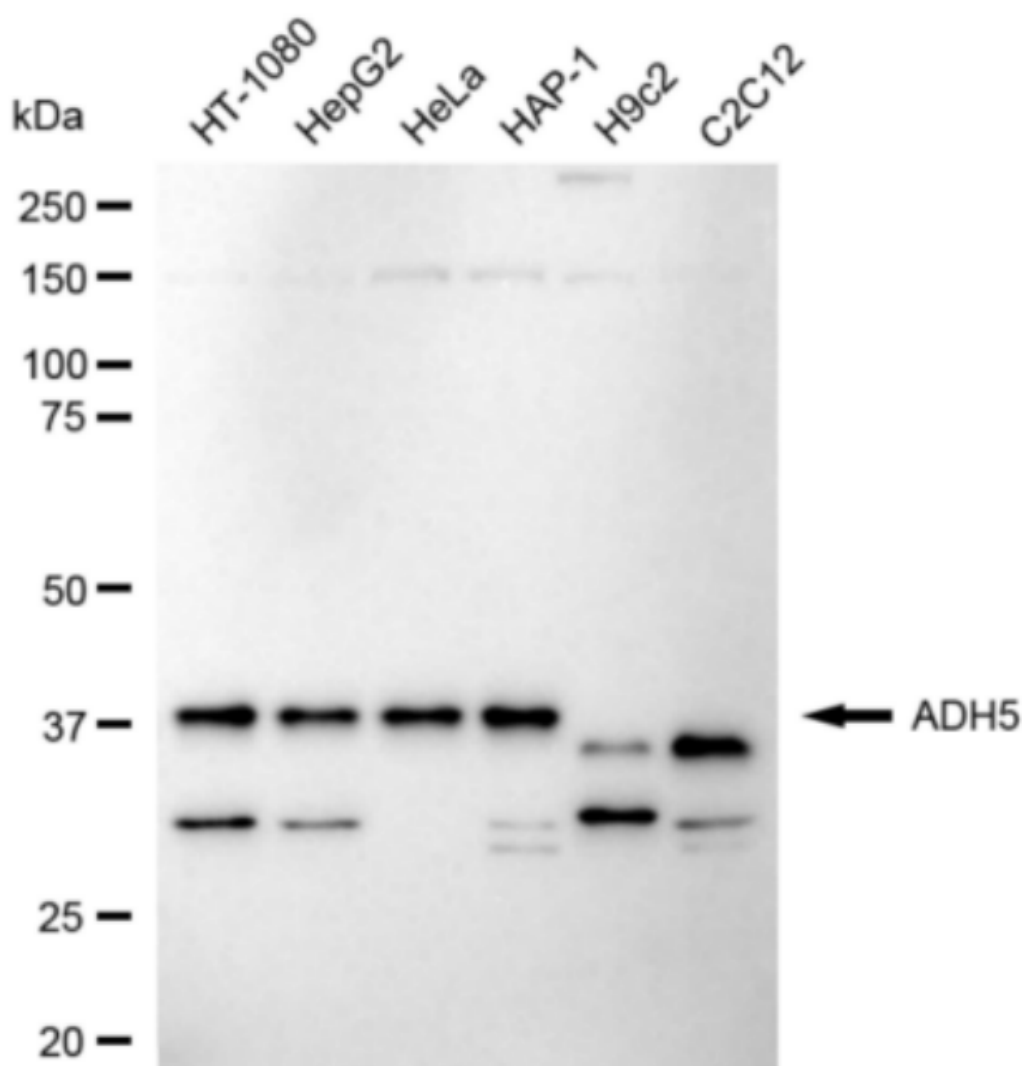
SUPPORT@GENUINBIOTECH.COM
TEL: +1-540-855-7041

ORDERS

SALES@GENUINBIOTECH.COM
FAX: +1-540-855-7041

WWW.GENUINBIOTECH.COM

Medium. Scale bar: 20 μ m.



Copyright ©2024 Genuin Biotechnologies LLC

Western blotting analysis using anti-ADH5 antibody (Cat#3248). Total cell lysates (30 μ g) from various cell lines were loaded and separated by SDS-PAGE. The blot was incubated with anti-ADH5 antibody (Cat#3248, 1:5,000) and HRP-conjugated goat anti-rabbit secondary antibody (Cat#201, 1:20,000) respectively. Image was developed using FeQ™ ECL Substrate Kit (Cat#226).

SUPPORT

SUPPORT@GENUINBIOTECH.COM
TEL: +1-540-855-7041

ORDERS

SALES@GENUINBIOTECH.COM
FAX: +1-540-855-7041

WWW.GENUINBIOTECH.COM