

Anti-ADRM1 26S Proteasome Ubiquitin Receptor Rabbit Monoclonal Antibody



Catalog #: 3249

Aliases

ADRM1; ADRM1 26S Proteasome Ubiquitin Receptor; GP110; PSMD16; ARM1; Proteasome Regulatory Particle Non-ATPase 13; Proteasomal Ubiquitin Receptor ADRM1; 110 KDa Cell Membrane Glycoprotein; Adhesion Regulating Molecule 1; Rpn13 Homolog; Rpn13; ARM-1; Adhesion-Regulating Molecule 1; Proteasome Ubiquitin Receptor; M(R) 110,000 Surface Antigen; HRpn13; Gp110

Background

Gene Name: ADRM1

NCBI Gene Entry: [11047](#)

UniProt Entry: [Q16186](#)

Application Information

Molecular Weight: Predicted, 42 kDa; observed, 42 kDa

Clonality: Rabbit monoclonal antibody

Clone ID: 24GB4700

Species Reactivity: Human

Applications Tested: Western blotting (WB), flow cytometry (FCM)

Immunogen

A synthesized peptide derived from human ADRM1

Isotype

Rabbit IgG

Storage Buffer

Supplied in PBS (pH 7.4) containing 50% glycerol, and 0.02% sodium azide.

Storage

Store at -20 °C for one year.

Recommended Dilutions

Western Blotting (WB): 1:1,000-1:5,000

Flow Cytometry (FCM): 1:2,000

SUPPORT

SUPPORT@GENUINBIOTECH.COM
TEL: +1-540-855-7041

ORDERS

SALES@GENUINBIOTECH.COM
FAX: +1-540-855-7041

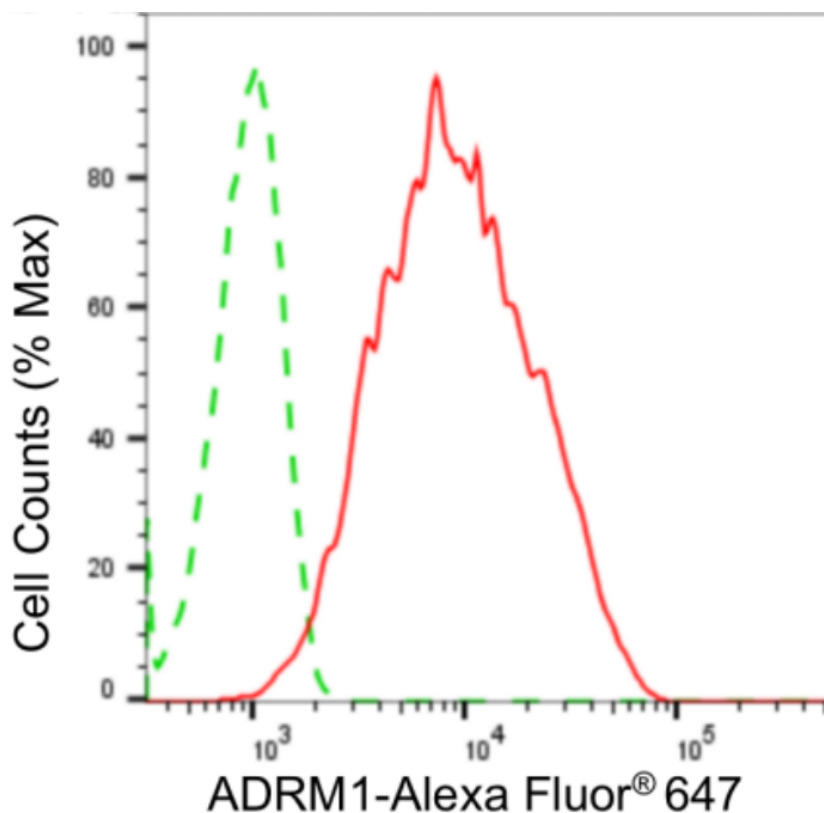
WWW.GENUINBIOTECH.COM

Anti-ADRM1 26S Proteasome Ubiquitin Receptor Rabbit Monoclonal Antibody

PAGE 2

Note: This product is for research use only.

Validation Data



Copyright ©2024 Genuin Biotechnologies LLC

Flow cytometric analysis of ADRM1 expression in HepG2 cells using anti-ADRM1 antibody (Cat#3249, 1:2,000). Green, isotype control; red, ADRM1.

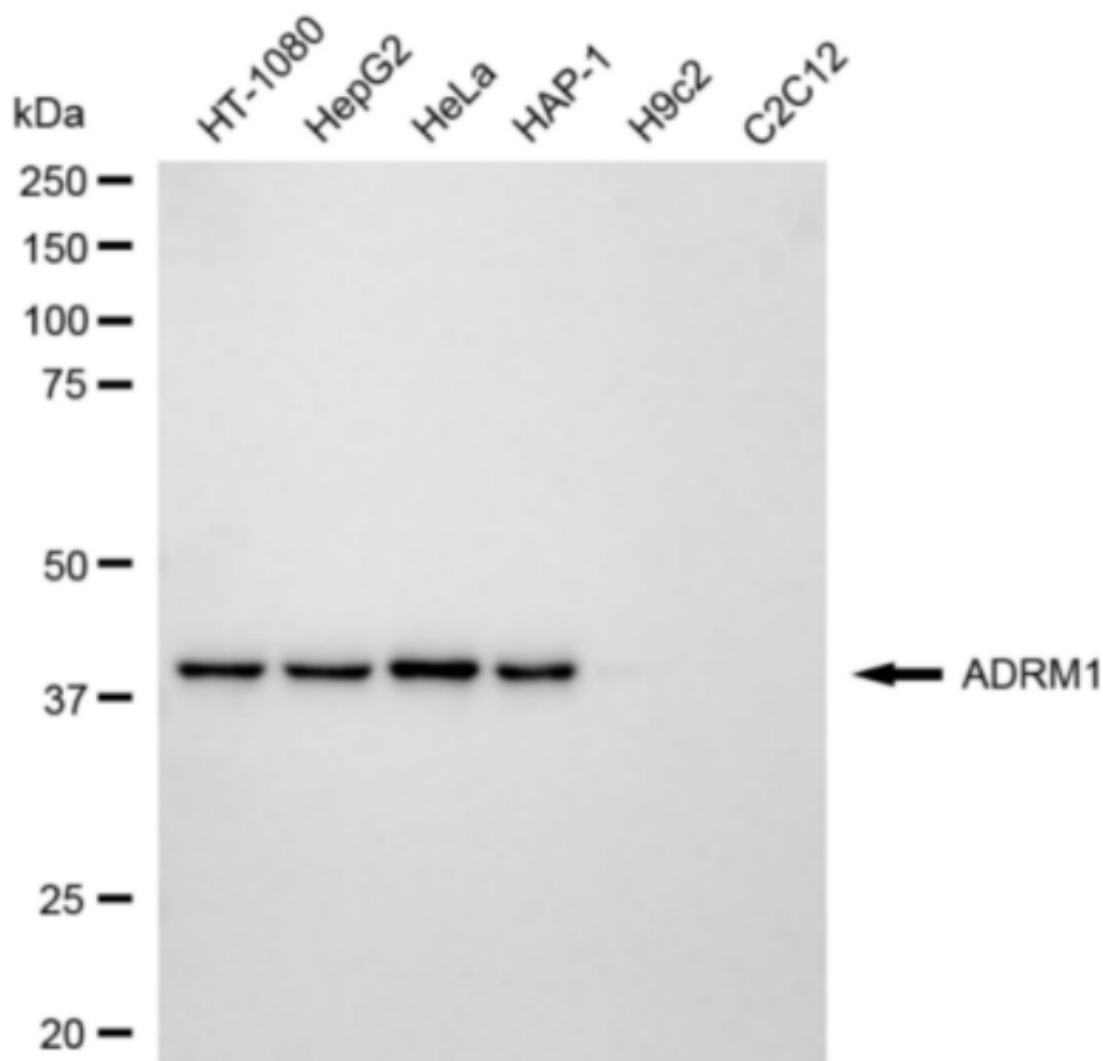
SUPPORT

SUPPORT@GENUINBIOTECH.COM
TEL: +1-540-855-7041

ORDERS

SALES@GENUINBIOTECH.COM
FAX: +1-540-855-7041

WWW.GENUINBIOTECH.COM



Copyright ©2024 Genuin Biotechnologies LLC

Western blotting analysis using anti-ADRM1 antibody (Cat#3249). Total cell lysates (30 µg) from various cell lines were loaded and separated by SDS-PAGE. The blot was incubated with anti-ADRM1 antibody (Cat#3249, 1:5,000) and HRP-conjugated goat anti-rabbit secondary antibody (Cat#201, 1:20,000) respectively. Image was developed using FeQ™ ECL Substrate Kit (Cat#226).