

# Anti-Collagen Type III Alpha 1 Chain Rabbit Monoclonal Antibody



**Catalog #: 3266**

## Aliases

COL3A1; Collagen Type III Alpha 1 Chain; Ehlers-Danlos Syndrome Type IV, Autosomal Dominant; Collagen, Type III, Alpha; Collagen Alpha-1(III) Chain; EDS4A; Alpha-1 Type III Collagen; Alpha1 (III) Collagen; Collagen, Fetal; EDSVASC; PMGEDSV

## Background

Gene Name: COL3A1

NCBI Gene Entry: [1281](#)

UniProt Entry: [P02461](#)

## Application Information

Molecular Weight: Predicted, 139 kDa; observed, 150 kDa

Clonality: Rabbit monoclonal antibody

Clone ID: 24GB4785

Species Reactivity: Human, mouse, rat

Applications Tested: Western blotting (WB), immunocytochemistry (IC), flow cytometry (FCM)

## Immunogen

Recombinant protein of human Collagen III

## Isotype

Rabbit IgG

## Storage Buffer

Supplied in PBS (pH 7.4) containing 50% glycerol, and 0.02% sodium azide.

## Storage

Store at -20 °C for one year.

## Recommended Dilutions

Western Blotting (WB): 1:1,000-1:5,000

Immunohistochemistry (IHC): 1:100-1:1,000

Flow Cytometry (FCM) : 1:2,000

**Note:** This product is for research use only.

---

### SUPPORT

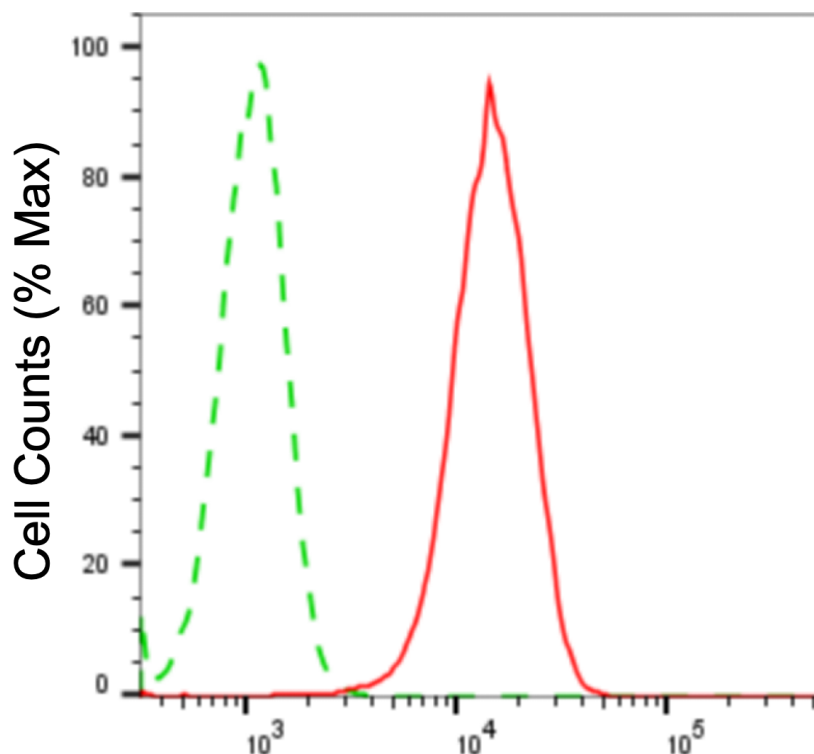
SUPPORT@GENUINBIOTECH.COM  
TEL: +1-540-855-7041

### ORDERS

SALES@GENUINBIOTECH.COM  
FAX: +1-540-855-7041

[WWW.GENUINBIOTECH.COM](http://WWW.GENUINBIOTECH.COM)

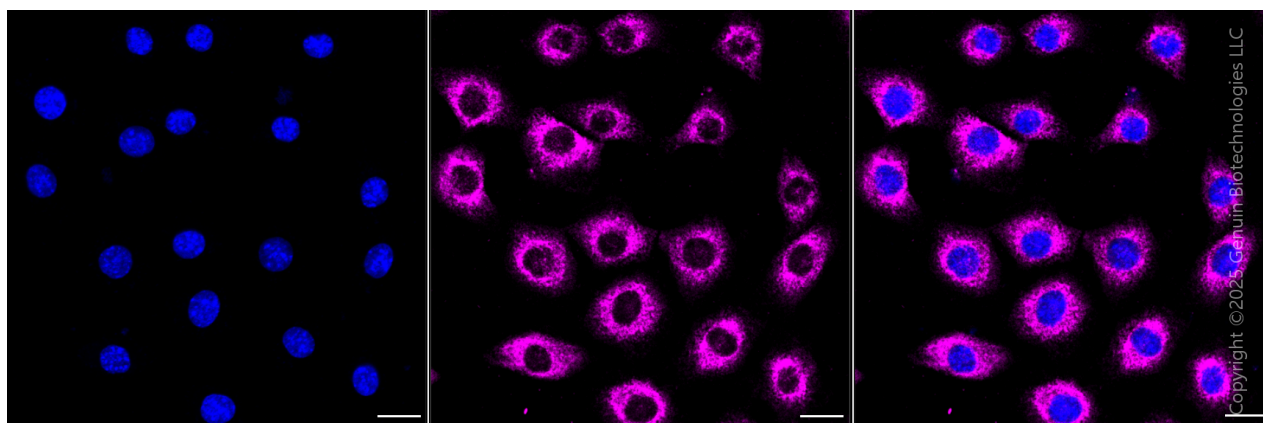
**Validation Data**



Copyright ©2025 Genuin Biotechnologies LLC

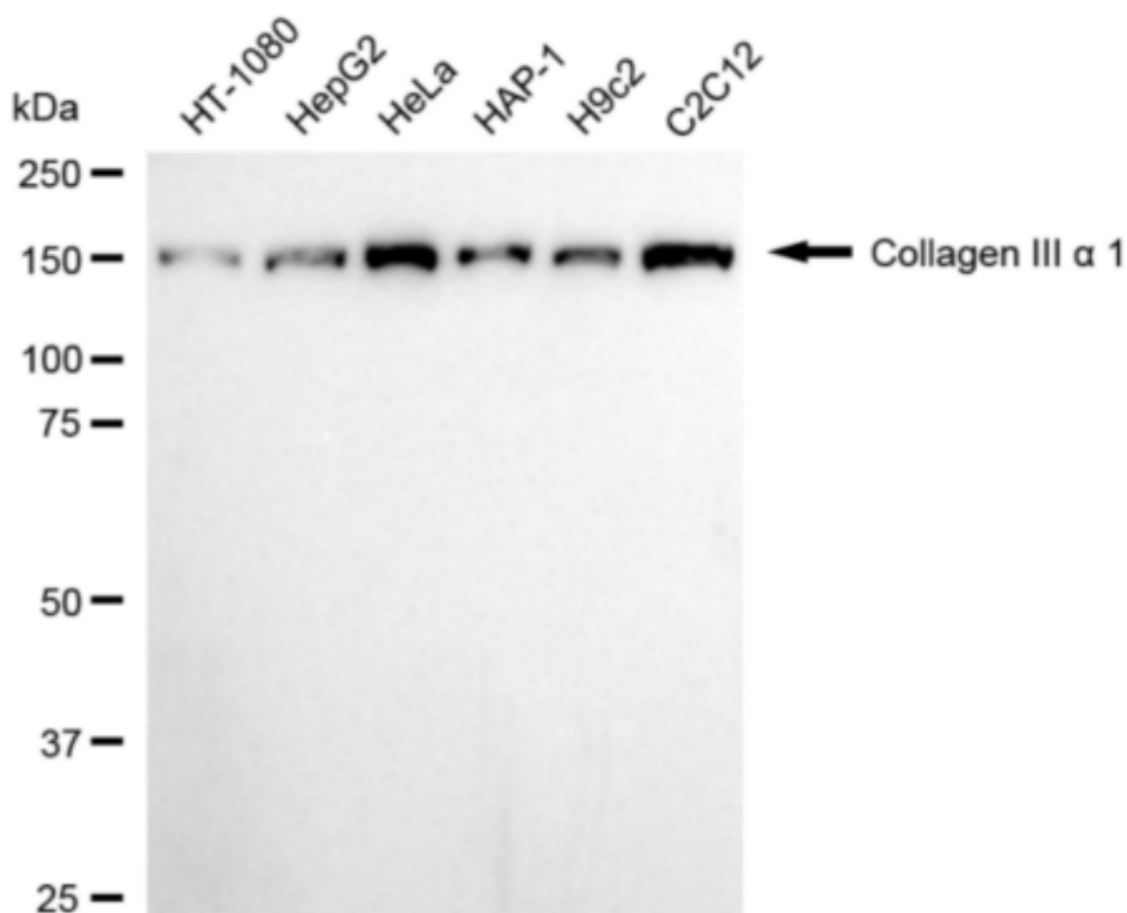
**Collagen III alpha 1-Alexa Fluor® 647**

Flow cytometric analysis of collagen III alpha 1 expression in C2C12 cells using anti-collagen III alpha 1 antibody (Cat#3266, 1:2,000). Green, isotype control; red, collagen III alpha 1.



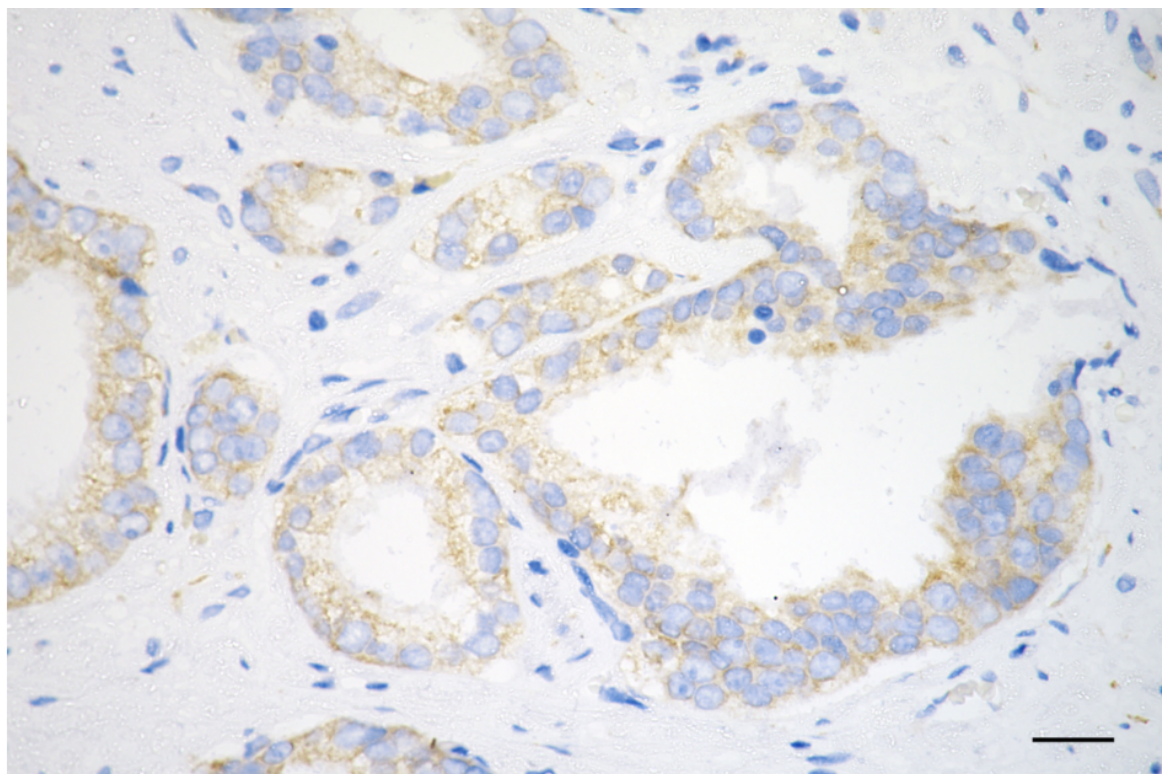
Copyright ©2025 Genuin Biotechnologies LLC

Immunocytochemical staining of C2C12 cells with anti-Collagen III alpha 1 antibody (Cat#3266, 1:1,000) . Nuclei were stained blue with DAPI; Collagen III alpha 1 was stained magenta with Alexa Fluor® 647. Images were taken using Leica stellaris 5. Protein abundance based on laser Intensity and smart gain: High. Scale bar, 20  $\mu$ m.



Copyright ©2024 Genuin Biotechnologies LLC

Western blotting analysis using anti-collagen III alpha 1 antibody (Cat#3266). Total cell lysates (30 µg) from various cell lines were loaded and separated by SDS-PAGE. The blot was incubated with anti-collagen III alpha 1 antibody (Cat#3266, 1:5,000) and HRP-conjugated goat anti-rabbit secondary antibody (Cat#201, 1:20,000) respectively. Image was developed using NaQ™ ECL Substrate Kit (Cat#716).



Copyright ©2025 Genuin Biotechnologies LLC

Immunohistochemistry was performed on paraffin-embedded human prostatic adenocarcinoma using anti-collagen III alpha 1 antibody (Cat#3266, 1:200). Antigen retrieval was done in sodium citrate buffer (pH 6.0). DAB was used for detection, with hematoxylin counterstaining. Images were acquired using a Nikon Ci-L Plus microscope (40× objective). Scale bar: 25  $\mu$ m.