

Anti-ER Membrane Protein Complex Subunit 4 Rabbit Monoclonal Antibody



Catalog #: 3273

Aliases

EMC4; ER Membrane Protein Complex Subunit 4; Transmembrane Protein 85; TMEM85; PIG17; Cell Proliferation-Inducing Gene 17 Protein; FLJ90746; MGC24415

Background

Gene Name: EMC4

NCBI Gene Entry: [51234](#)

UniProt Entry: [Q5J8M3](#)

Application Information

Molecular Weight: Predicted, 20 kDa; observed, 17 kDa

Clonality: Rabbit monoclonal antibody

Clone ID: 24GB4820

Species Reactivity: Human, mouse, rat

Applications Tested: Western blotting (WB), flow cytometry (FCM), immunocytochemistry (IC)

Immunogen

A synthesized peptide derived from human TMEM85

Isotype

Rabbit IgG

Storage Buffer

Supplied in PBS (pH 7.4) containing 50% glycerol, and 0.02% sodium azide.

Storage

Store at -20 °C for one year.

Recommended Dilutions

Western Blotting (WB): 1:1,000-1:5,000

Flow Cytometry (FCM): 1:2,000

Immunocytochemistry (IC): 1:100-1:1,000

Note: This product is for research use only.

Validation Data

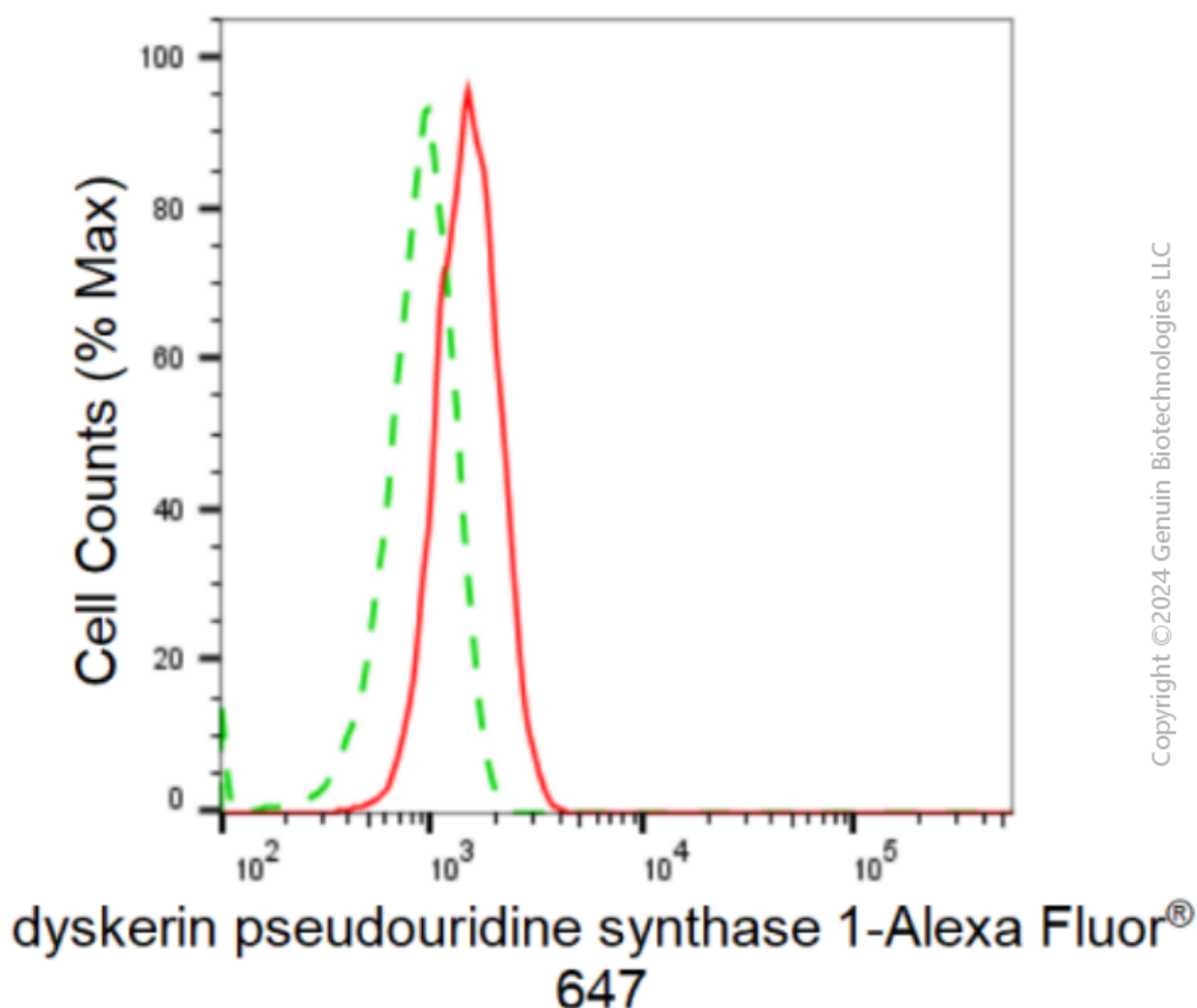
SUPPORT

SUPPORT@GENUINBIOTECH.COM
TEL: +1-540-855-7041

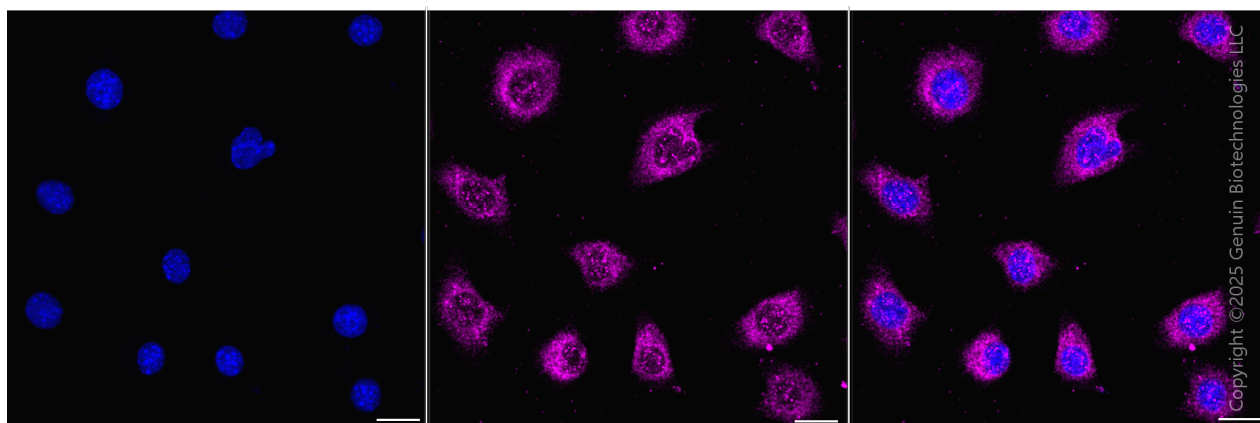
ORDERS

SALES@GENUINBIOTECH.COM
FAX: +1-540-855-7041

WWW.GENUINBIOTECH.COM



Flow cytometric analysis of dyskerin pseudouridine synthase 1 expression in C2C12 cells using anti-dyskerin pseudouridine synthase 1 antibody (Cat#3273, 1:2,000). Green, isotype control; red, dyskerin pseudouridine synthase 1.



Immunocytochemical staining of C2C12 cells with anti-EMC4 antibody (Cat#3273, 1:1,000) .

SUPPORT

SUPPORT@GENUINBIOTECH.COM
TEL: +1-540-855-7041

ORDERS

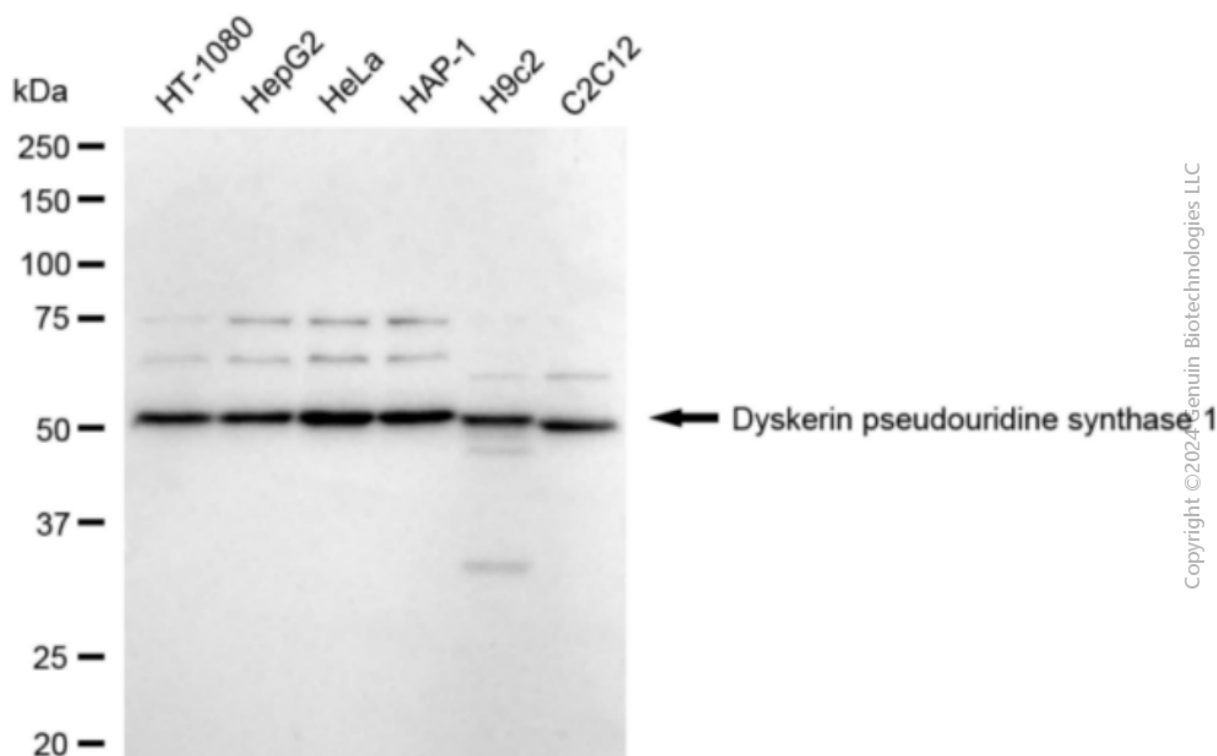
SALES@GENUINBIOTECH.COM
FAX: +1-540-855-7041

WWW.GENUINBIOTECH.COM

Anti-ER Membrane Protein Complex Subunit 4 Rabbit Monoclonal Antibody

PAGE 3

Nuclei were stained blue with DAPI; EMC4 was stained magenta with Alexa Fluor® 647. Images were taken using Leica stellaris 5. Protein abundance based on laser Intensity and Smart Gain: Medium. Scale bar, 20 µm.



Western blotting analysis using anti-dyskerin pseudouridine synthase 1 antibody (Cat#3273). Total cell lysates (30 µg) from various cell lines were loaded and separated by SDS-PAGE. The blot was incubated with anti-dyskerin pseudouridine synthase 1 antibody (Cat#3273, 1:5,000) and HRP-conjugated goat anti-rabbit secondary antibody (Cat#201, 1:20,000) respectively. Image was developed using NaQ™ ECL Substrate Kit (Cat#716).

SUPPORT

SUPPORT@GENUINBIOTECH.COM
TEL: +1-540-855-7041

ORDERS

SALES@GENUINBIOTECH.COM
FAX: +1-540-855-7041

WWW.GENUINBIOTECH.COM