

# Anti-Folate Receptor Alpha Rabbit Monoclonal Antibody



**Catalog #: 3278**

## Aliases

FOLR1; Folate Receptor Alpha; FOLR; Ovarian Tumor-Associated Antigen MOv18; Adult Folate-Binding Protein; Folate Receptor 1 (Adult); Folate Receptor, Adult; Folate Receptor 1; KB Cells FBP; FR-Alpha; FBP; Folate Binding Protein; FRalpha; NCFTD; FR $\alpha$ ; FRA

## Background

Gene Name: FOLR1

NCBI Gene Entry: [2348](#)

UniProt Entry: [P15328](#)

## Application Information

Molecular Weight: Predicted, 30 kDa; observed, 37 kDa

Clonality: Rabbit monoclonal antibody

Clone ID: 24GB4845

Species Reactivity: Human

Applications Tested: Western blotting (WB)

## Immunogen

A synthesized peptide derived from human Folate Binding Protein

## Isotype

Rabbit IgG

## Storage Buffer

Supplied in PBS (pH 7.4) containing 50% glycerol, and 0.02% sodium azide.

## Storage

Store at -20 °C for one year.

## Recommended Dilutions

Western Blotting (WB): 1:1,000-1:5,000

**Note:** This product is for research use only.

## Validation Data

---

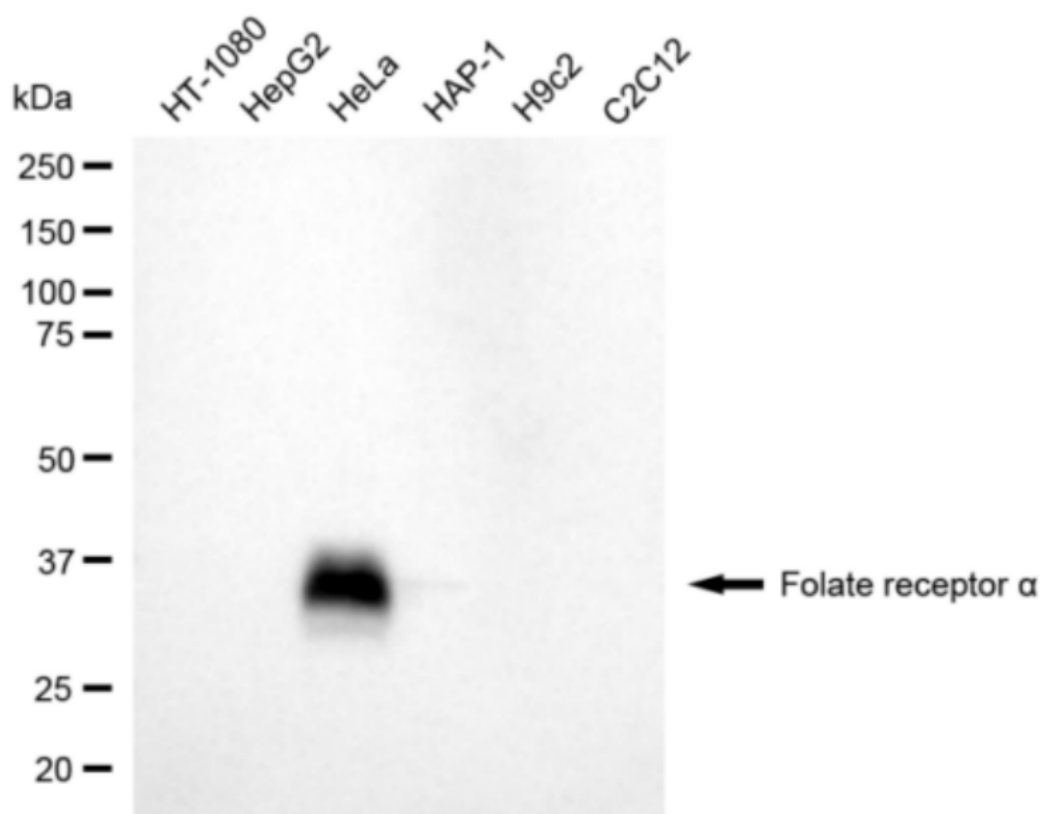
### SUPPORT

SUPPORT@GENUINBIOTECH.COM  
TEL: +1-540-855-7041

### ORDERS

SALES@GENUINBIOTECH.COM  
FAX: +1-540-855-7041

[WWW.GENUINBIOTECH.COM](http://WWW.GENUINBIOTECH.COM)



Copyright ©2024 Genuin Biotechnologies LLC

Western blotting analysis using anti-folate receptor alpha antibody (Cat#3278). Total cell lysates (30 µg) from various cell lines were loaded and separated by SDS-PAGE. The blot was incubated with anti-folate receptor alpha antibody (Cat#3278, 1:5,000) and HRP-conjugated goat anti-rabbit secondary antibody (Cat#201, 1:20,000) respectively. Image was developed using NaQ™ ECL Substrate Kit (Cat#716).