

Anti-FYN Binding Protein 1 Rabbit Monoclonal Antibody



Catalog #: 3279

Aliases

FYB1; FYN Binding Protein 1; FYB-120/130; SLAP-130; ADAP; FYB; Adhesion And Degranulation Promoting Adaptor Protein; SLP-76-Associated Phosphoprotein; FYN-Binding Protein 1; FYN-T-Binding Protein; P120/P130; SLAP130; Adhesion And Degranulation-Promoting Adaptor Protein; FYN-Binding Protein (FYB-120/130); FYN Binding Protein; PRO0823; THC3

Background

Gene Name: FYB1

NCBI Gene Entry: [2533](#)

UniProt Entry: [O15117](#)

Application Information

Molecular Weight: Predicted, 85 kDa; observed, 120 kDa

Clonality: Rabbit monoclonal antibody

Clone ID: 24GB4850

Species Reactivity: Rat

Applications Tested: Western blotting (WB), immunocytochemistry (IC), flow cytometry (FCM)

Immunogen

A synthesized peptide derived from human FYB

Isotype

Rabbit IgG

Storage Buffer

Supplied in PBS (pH 7.4) containing 50% glycerol, and 0.02% sodium azide.

Storage

Store at -20 °C for one year.

Recommended Dilutions

Western Blotting (WB): 1:2,500-1:5,000

Immunocytochemistry (IC): 1:100-1:1,000

Flow Cytometry (FCM) : 1:2,000

SUPPORT

SUPPORT@GENUINBIOTECH.COM
TEL: +1-540-855-7041

ORDERS

SALES@GENUINBIOTECH.COM
FAX: +1-540-855-7041

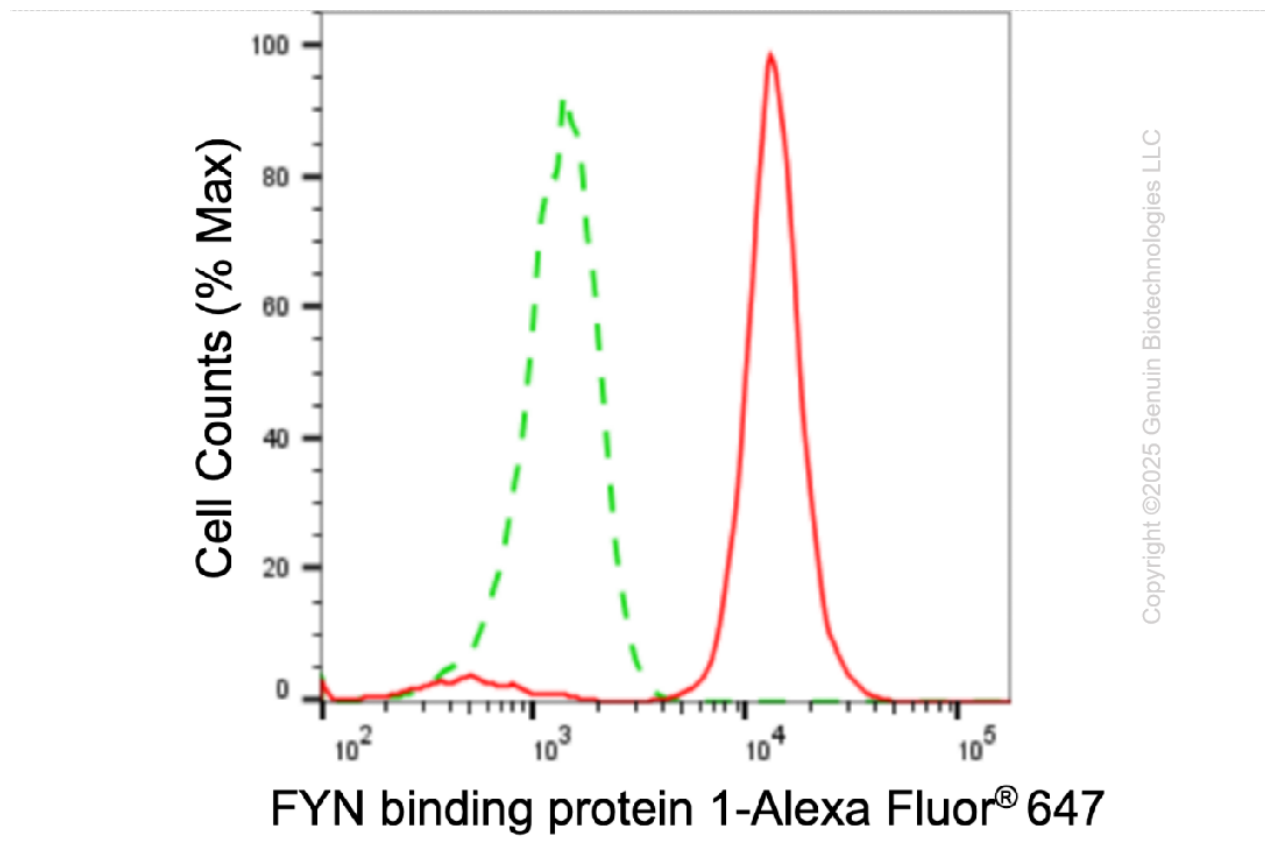
WWW.GENUINBIOTECH.COM

Anti-FYN Binding Protein 1 Rabbit Monoclonal Antibody

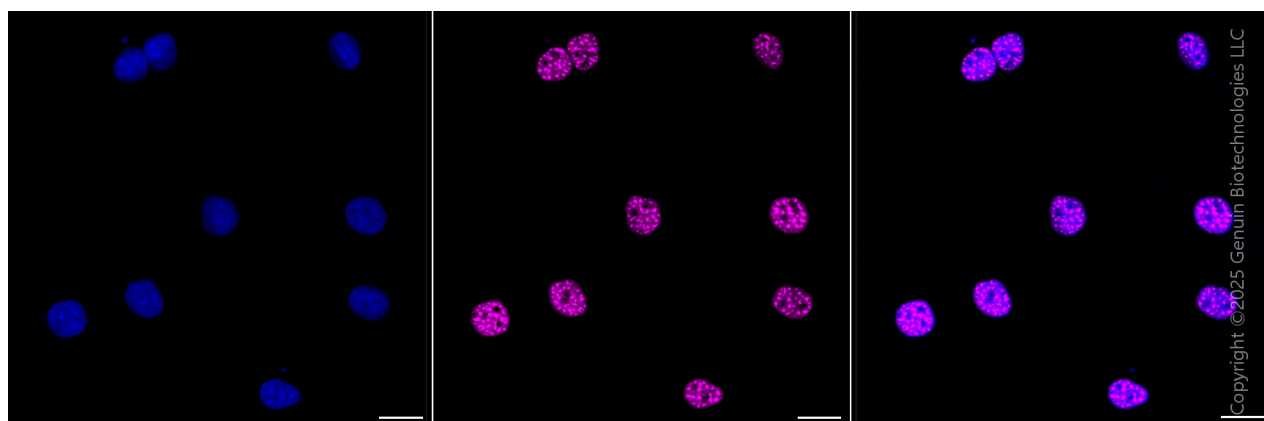
PAGE 2

Note: This product is for research use only.

Validation Data



Flow cytometric analysis of FYN binding protein 1 expression in H9c2 cells using anti-FYN binding protein 1 antibody (Cat#3279, 1:2,000). Green, isotype control; red, FYN binding protein 1.



Immunocytochemical staining of H9C2 cells with anti-FYN binding protein 1 antibody (Cat#3279, 1:1,000). Nuclei were stained blue with DAPI; FYN binding protein 1 was stained magenta with Alexa Fluor® 647. Images were taken using Leica stellaris 5. Protein abundance

SUPPORT

SUPPORT@GENUINBIOTECH.COM
TEL: +1-540-855-7041

ORDERS

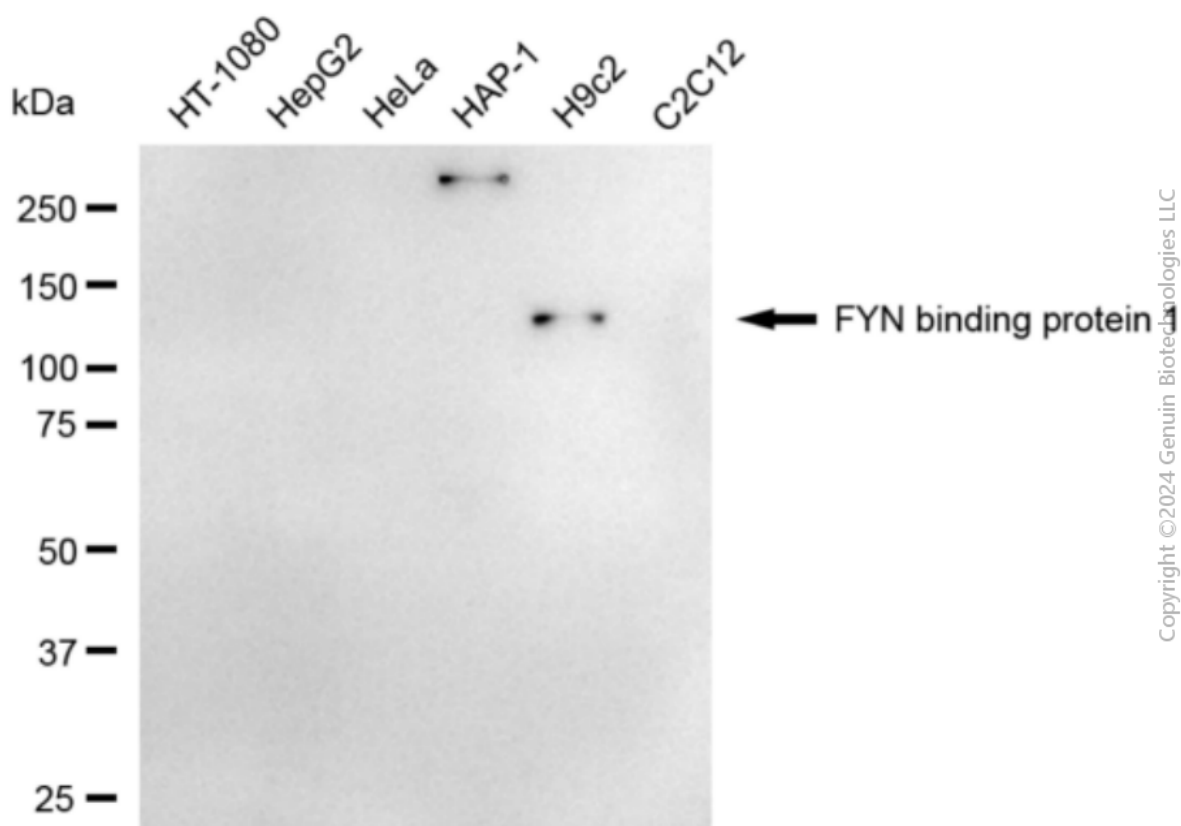
SALES@GENUINBIOTECH.COM
FAX: +1-540-855-7041

WWW.GENUINBIOTECH.COM

Anti-FYN Binding Protein 1 Rabbit Monoclonal Antibody

PAGE 3

based on laser Intensity and smart gain □ Medium. Scale bar, 20 μm.



Western blotting analysis using anti-FYN binding protein 1 antibody (Cat#3279). Total cell lysates (30 μg) from various cell lines were loaded and separated by SDS-PAGE. The blot was incubated with anti-FYN binding protein 1 antibody (Cat#3279, 1:5,000) and HRP-conjugated goat anti-rabbit secondary antibody (Cat#201, 1:20,000) respectively. Image was developed using NaQ™ ECL Substrate Kit (Cat#716).

SUPPORT

SUPPORT@GENUINBIOTECH.COM
TEL: +1-540-855-7041

ORDERS

SALES@GENUINBIOTECH.COM
FAX: +1-540-855-7041

WWW.GENUINBIOTECH.COM