

Catalog #: 3284

Aliases

GSN; Gelsolin; Actin-Depolymerizing Factor; DKFZp313L0718; Brevin; AGEL; ADF; Epididymis Secretory Sperm Binding Protein; Gelsolin (Amyloidosis, Finnish Type); Amyloidosis, Finnish Type

Background

Gene Name: GSN

NCBI Gene Entry: [2934](#)

UniProt Entry: [P06396](#)

Application Information

Molecular Weight: Predicted, 86 kDa; observed, 86 kDa

Clonality: Rabbit monoclonal antibody

Clone ID: 24GB4875

Species Reactivity: Human, mouse

Applications Tested: Western blotting (WB), flow cytometry (FCM)

Immunogen

A synthesized peptide derived from human Gelsolin

Isotype

Rabbit IgG

Storage Buffer

Supplied in PBS (pH 7.4) containing 50% glycerol, and 0.02% sodium azide.

Storage

Store at -20 °C for one year.

Recommended Dilutions

Western Blotting (WB): 1:1,000-1:5,000

Flow Cytometry (FCM): 1:2,000

Note: This product is for research use only.

Validation Data

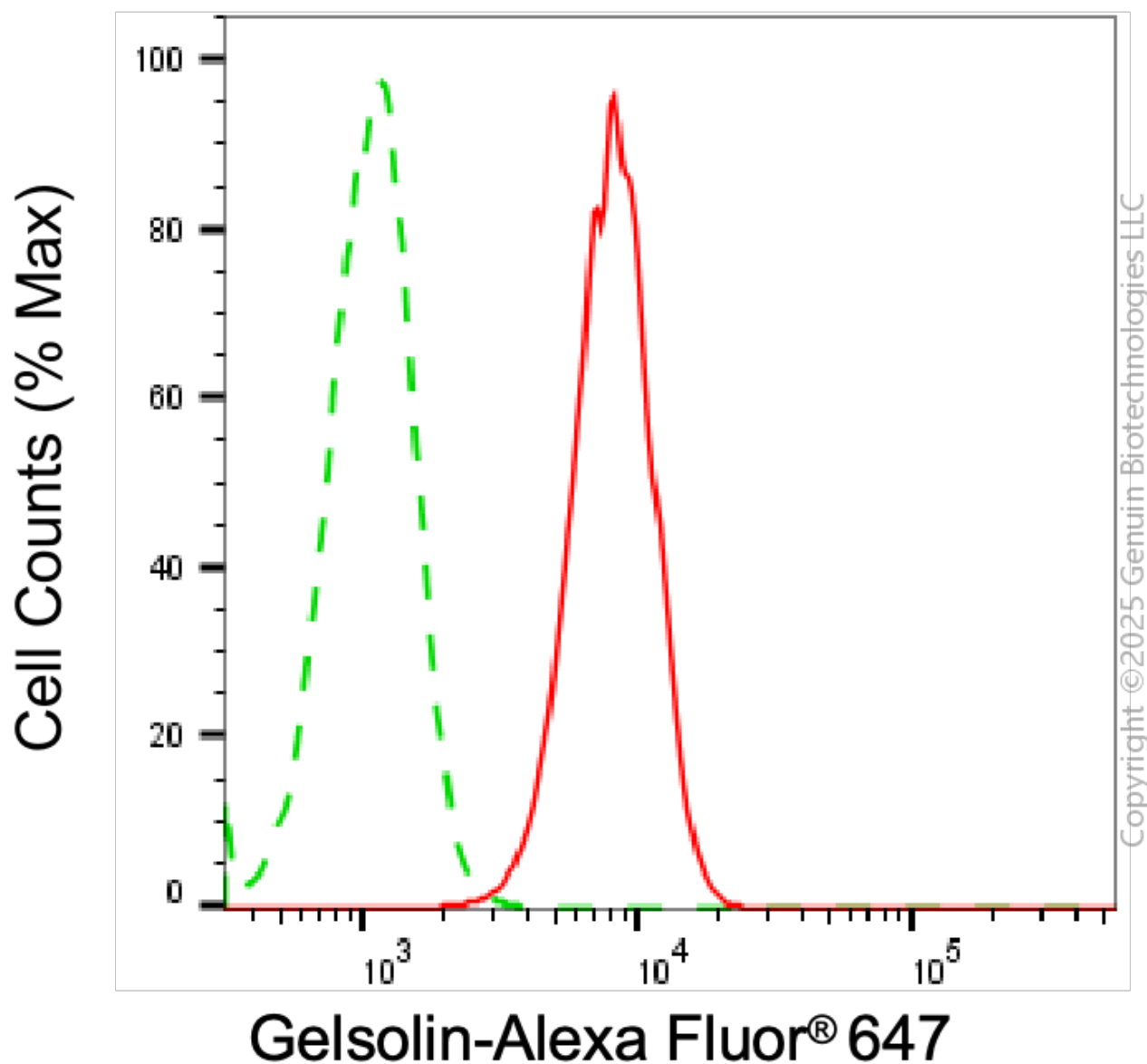
SUPPORT

SUPPORT@GENUINBIOTECH.COM
TEL: +1-540-855-7041

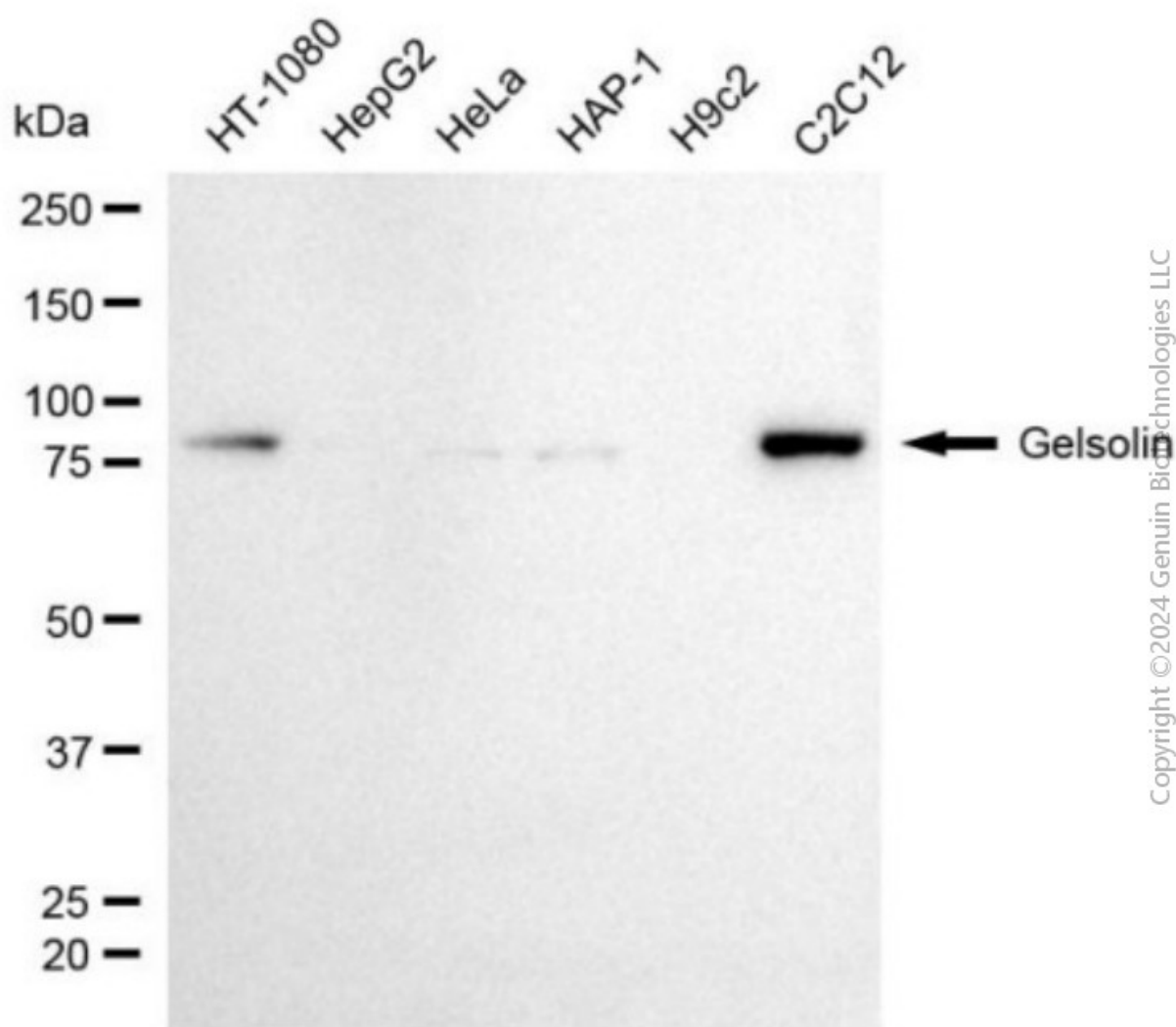
ORDERS

SALES@GENUINBIOTECH.COM
FAX: +1-540-855-7041

WWW.GENUINBIOTECH.COM



Flow cytometric analysis of gelsolin expression in C2C12 cells using anti-gelsolin antibody (Cat#3284, 1:2,000). Green, isotype control; red, gelsolin.



Western blotting analysis using anti-gelsolin antibody (Cat#3284). Total cell lysates (30 μ g) from various cell lines were loaded and separated by SDS-PAGE. The blot was incubated with anti-gelsolin antibody (Cat#63284, 1:5,000) and HRP-conjugated goat anti-rabbit secondary antibody (Cat#201, 1:20,000) respectively. Image was developed using NaQ™ ECL Substrate Kit (Cat#716).