

Anti-GTP Binding Protein 4 Rabbit Monoclonal Antibody



Catalog #: 3285

Aliases

GTPBP4; GTP Binding Protein 4; CRFG; NOG1; NGB; Chronic Renal Failure Gene Protein; Nucleolar GTP-Binding Protein 1; G Protein-Binding Protein CRFG; GTP-Binding Protein NGB; GTP-Binding Protein 4; FLJ10690; FLJ10686; GTP-Binding Protein

Background

Gene Name: GTPBP4

NCBI Gene Entry: [23560](#)

UniProt Entry: [Q9BZE4](#)

Application Information

Molecular Weight: Predicted, 74 kDa; observed, 74 kDa

Clonality: Rabbit monoclonal antibody

Clone ID: 24GB4880

Species Reactivity: Human

Applications Tested: Western blotting (WB), flow cytometry (FCM), immunocytochemistry (IC)

Immunogen

A synthesized peptide derived from human GTPBP4/NOG1

Isotype

Rabbit IgG

Storage Buffer

Supplied in PBS (pH 7.4) containing 50% glycerol, and 0.02% sodium azide.

Storage

Store at -20 °C for one year.

Recommended Dilutions

Western Blotting (WB): 1:1,000-1:5,000

Flow Cytometry (FCM): 1:2,000

Immunocytochemistry (IC): 1:100-1:1,000

Note: This product is for research use only.

SUPPORT

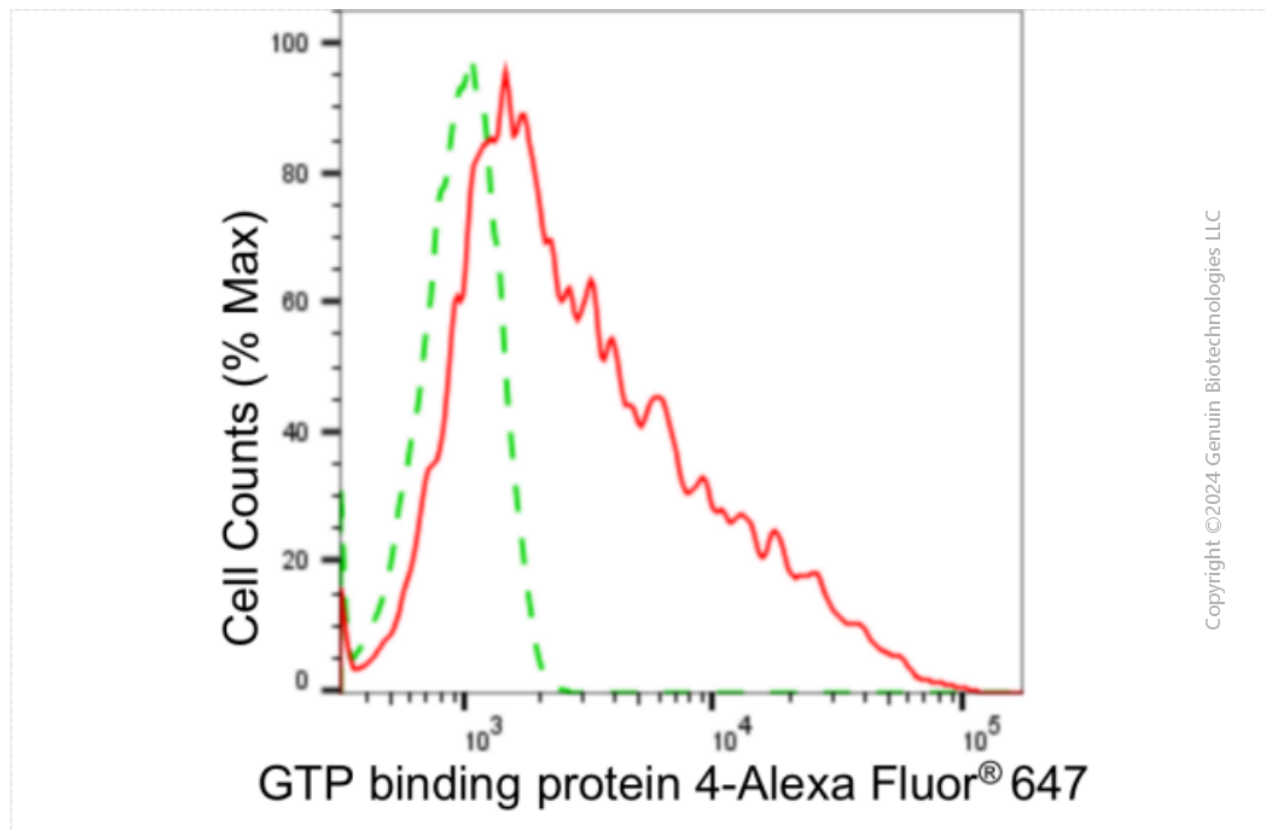
SUPPORT@GENUINBIOTECH.COM
TEL: +1-540-855-7041

ORDERS

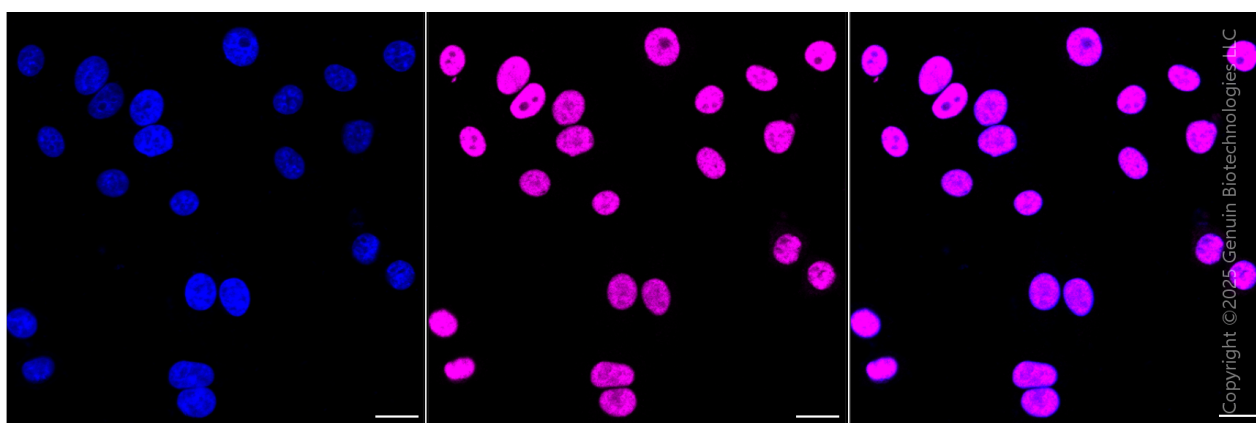
SALES@GENUINBIOTECH.COM
FAX: +1-540-855-7041

WWW.GENUINBIOTECH.COM

Validation Data



Flow cytometric analysis of GTP binding protein 4 expression in HepG2 cells using anti-GTP binding protein 4 antibody (Cat#3285, 1:2,000). Green, isotype control; red, GTP binding protein 4.



Immunocytochemical staining of HepG2 cells with anti-GTP binding protein 4 antibody (Cat#3285, 1:1,000). Nuclei were stained blue with DAPI; GTP binding protein 4 was stained magenta with Alexa Fluor® 647. Images were taken using Leica stellaris 5. Protein abundance based on laser Intensity and smart gain: High. Scale bar, 20 μ m.

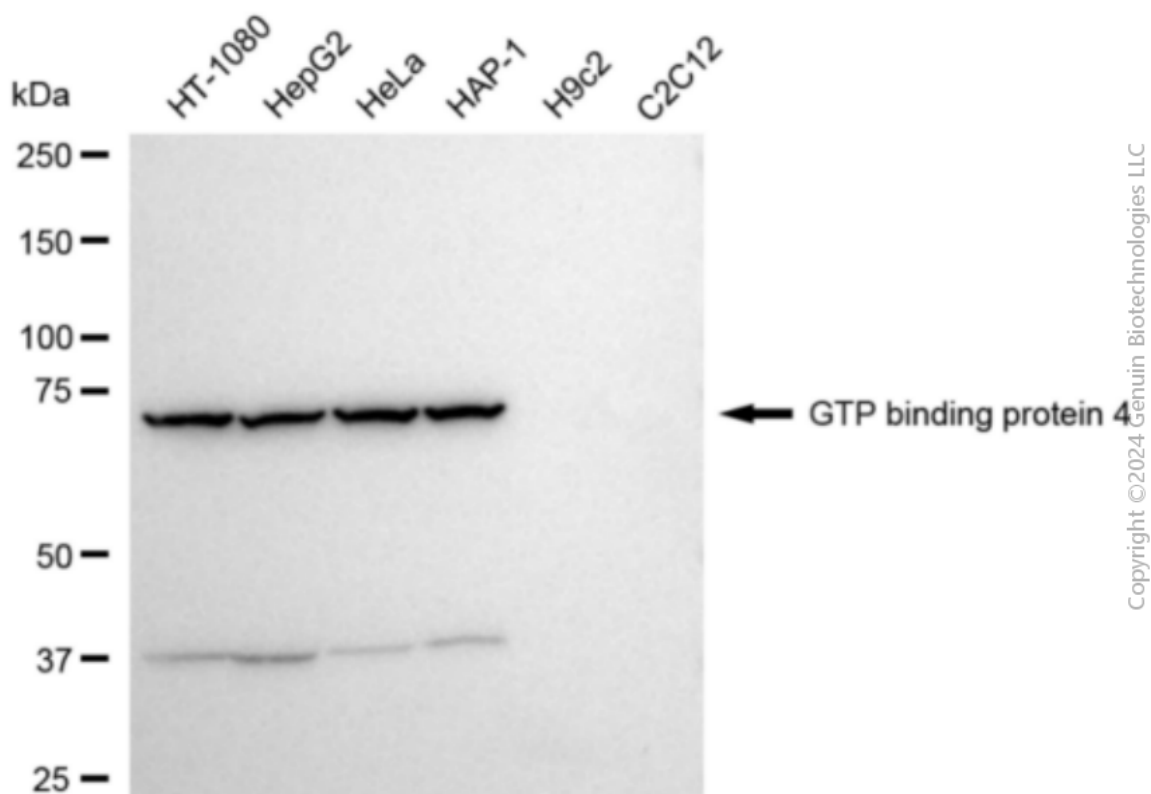
SUPPORT

SUPPORT@GENUINBIOTECH.COM
TEL: +1-540-855-7041

ORDERS

SALES@GENUINBIOTECH.COM
FAX: +1-540-855-7041

WWW.GENUINBIOTECH.COM



Western blotting analysis using anti-GTP binding protein 4 antibody (Cat#3285). Total cell lysates (30 μ g) from various cell lines were loaded and separated by SDS-PAGE. The blot was incubated with anti-GTP binding protein 4 antibody (Cat#3285, 1:5,000) and HRP-conjugated goat anti-rabbit secondary antibody (Cat#201, 1:20,000) respectively. Image was developed using NaQ™ ECL Substrate Kit (Cat#716).