

Anti-Homeodomain Interacting Protein Kinase 2 Rabbit Monoclonal Antibody



Catalog #: 3287

Aliases

HIPK2; Homeodomain Interacting Protein Kinase 2; Homeodomain-Interacting Protein Kinase 2;
EC 2.7.11.1; HHIPk2; PRO0593

Background

Gene Name: HIPK2

NCBI Gene Entry: [28996](#)

UniProt Entry: [Q9H2X6](#)

Application Information

Molecular Weight: Predicted, 131 kDa; observed, 100,130 kDa

Clonality: Rabbit monoclonal antibody

Clone ID: 24GB4890

Species Reactivity: Human

Applications Tested: Western blotting (WB), flow cytometry (FCM), immunocytochemistry (IC)

Immunogen

A synthesized peptide derived from human HIPK2

Isotype

Rabbit IgG

Storage Buffer

Supplied in PBS (pH 7.4) containing 50% glycerol, and 0.02% sodium azide.

Storage

Store at -20 °C for one year.

Recommended Dilutions

Western Blotting (WB): 1:1,000-1:5,000

Flow Cytometry (FCM): 1:2,000

Immunocytochemistry (IC): 1:100-1:1,000

Note: This product is for research use only.

Validation Data

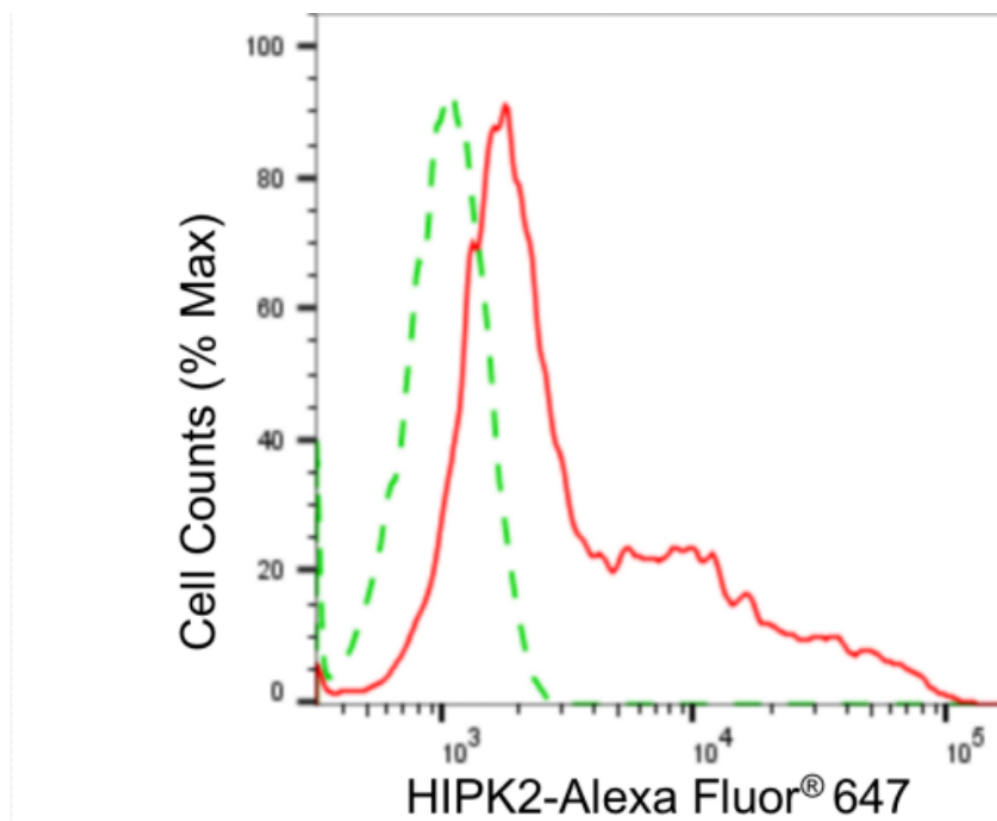
SUPPORT

SUPPORT@GENUINBIOTECH.COM
TEL: +1-540-855-7041

ORDERS

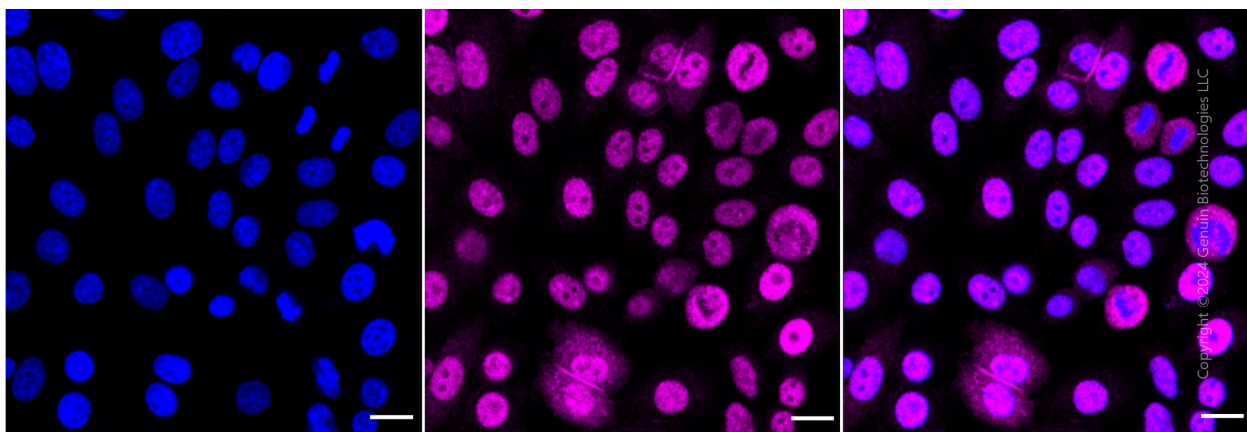
SALES@GENUINBIOTECH.COM
FAX: +1-540-855-7041

WWW.GENUINBIOTECH.COM



Copyright ©2024 Genuin Biotechnologies LLC

Flow cytometric analysis of HIPK2 expression in HepG2 cells using anti-HIPK2 antibody (Cat#3287, 1:2,000). Green, isotype control; red, HIPK2.



Immunocytochemical staining of HepG2 cells with anti-HIPK2 antibody (Cat#3287, 1:1,000). Nuclei were stained blue with DAPI; HIPK2 was stained magenta with Alexa Fluor® 647. Images were taken using Leica stellaris 5. Protein abundance based on laser Intensity and smart gain: Medium. Scale bar: 20 µm.

SUPPORT

SUPPORT@GENUINBIOTECH.COM
TEL: +1-540-855-7041

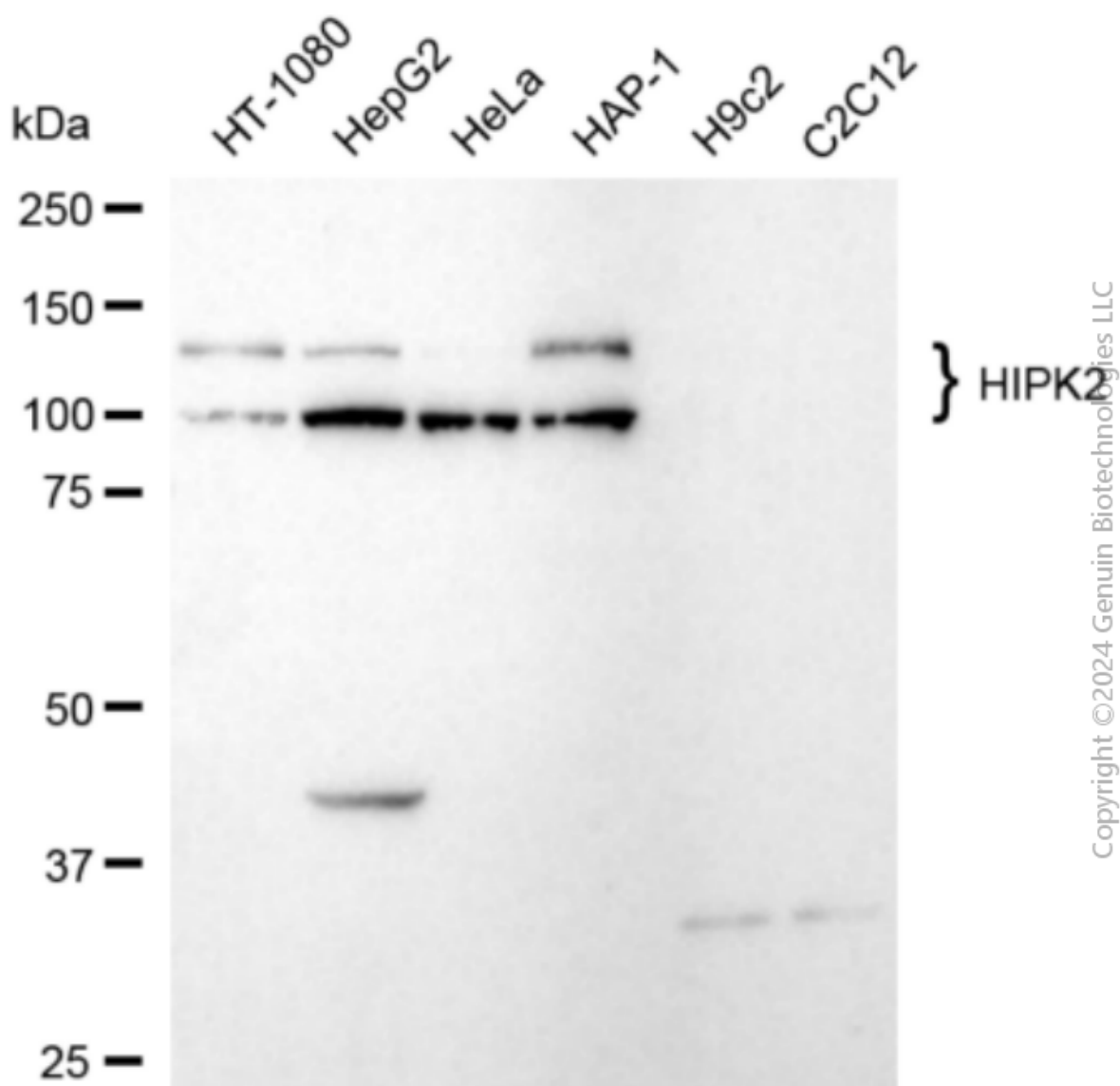
ORDERS

SALES@GENUINBIOTECH.COM
FAX: +1-540-855-7041

WWW.GENUINBIOTECH.COM

Anti-Homeodomain Interacting Protein Kinase 2 Rabbit Monoclonal Antibody

PAGE 3



Western blotting analysis using anti-HIPK2 antibody (Cat#3287). Total cell lysates (30 µg) from various cell lines were loaded and separated by SDS-PAGE. The blot was incubated with anti-HIPK2 antibody (Cat#3287, 1:5,000) and HRP-conjugated goat anti-rabbit secondary antibody (Cat#201, 1:20,000) respectively. Image was developed using NaQ™ ECL Substrate Kit (Cat#716). HIPK2, homeodomain interacting protein kinase 2.

SUPPORT

SUPPORT@GENUINBIOTECH.COM
TEL: +1-540-855-7041

ORDERS

SALES@GENUINBIOTECH.COM
FAX: +1-540-855-7041

WWW.GENUINBIOTECH.COM