

Anti-HtrA Serine Peptidase 2 Rabbit Monoclonal Antibody



Catalog #: 3289

Aliases

HTRA2; HtrA Serine Peptidase 2; OMI; PARK13; PRSS25; High Temperature Requirement Protein A2; Serine Protease HTRA2, Mitochondrial; Omi Stress-Regulated Endoprotease; Serine Proteinase OMI; Protease, Serine, 25; Serine Protease 25; EC 3.4.21.108; Epididymis Secretory Sperm Binding Protein; HtrA-Like Serine Protease; MGCA8; HtrA2

Background

Gene Name: HTRA2

NCBI Gene Entry: [27429](#)

UniProt Entry: [O43464](#)

Application Information

Molecular Weight: Predicted, 49 kDa; observed, 36 kDa

Clonality: Rabbit monoclonal antibody

Clone ID: 24GB4900

Species Reactivity: Human, mouse, rat

Applications Tested: Western blotting (WB)

Immunogen

A synthesized peptide derived from human HtrA2/Omi

Isotype

Rabbit IgG

Storage Buffer

Supplied in PBS (pH 7.4) containing 50% glycerol, and 0.02% sodium azide.

Storage

Store at -20 °C for one year.

Recommended Dilutions

Western Blotting (WB): 1:1,000-1:5,000

Note: This product is for research use only.

Validation Data

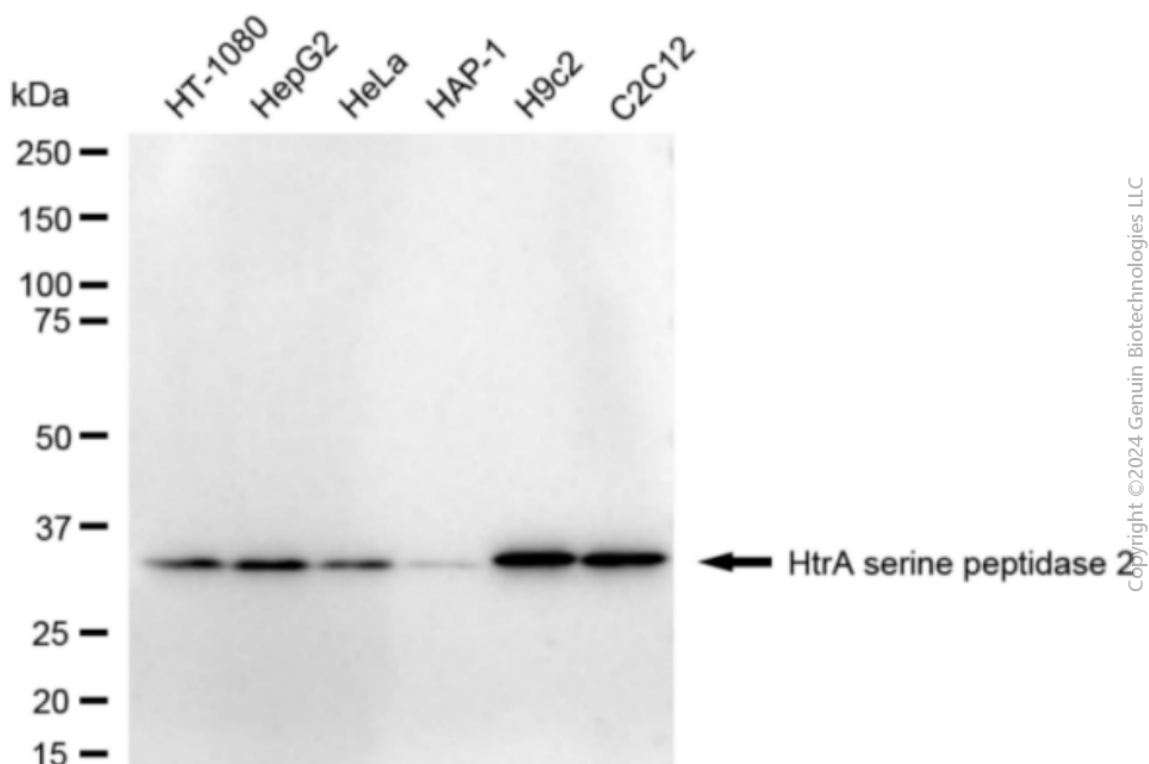
SUPPORT

SUPPORT@GENUINBIOTECH.COM
TEL: +1-540-855-7041

ORDERS

SALES@GENUINBIOTECH.COM
FAX: +1-540-855-7041

WWW.GENUINBIOTECH.COM



Western blotting analysis using anti-HtrA serine peptidase 2 antibody (Cat#3289). Total cell lysates (30 µg) from various cell lines were loaded and separated by SDS-PAGE. The blot was incubated with anti-HtrA serine peptidase 2 antibody (Cat#3289, 1:5,000) and HRP-conjugated goat anti-rabbit secondary antibody (Cat#201, 1:20,000) respectively. Image was developed using NaQ™ ECL Substrate Kit (Cat#716).