

Anti-Lysine Demethylase 4B Rabbit Monoclonal Antibody



Catalog #: 3294

Aliases

KDM4B; Lysine Demethylase 4B; KIAA0876; TDRD14B; JMJD2B; JmjC Domain-Containing Histone Demethylation Protein 3B; [Histone H3]-Trimethyl-L-Lysine(9) Demethylase 4B; Jumonji Domain-Containing Protein 2B; Lysine (K)-Specific Demethylase 4B; Lysine-Specific Demethylase 4B; Jumonji Domain Containing 2B; Tudor Domain Containing 14B; EC 1.14.11.66; EC 1.14.11; JHDM3B; MRD65

Background

Gene Name: KDM4B

NCBI Gene Entry: [23030](#)

UniProt Entry: [O94953](#)

Application Information

Molecular Weight: Predicted, 122 kDa; observed, 150 kDa

Clonality: Rabbit monoclonal antibody

Clone ID: 24GB4925

Species Reactivity: Human, mouse, rat

Applications Tested: Western blotting (WB), flow cytometry (FCM)

Immunogen

A synthesized peptide derived from human KDM4B/JMJD2B

Isotype

Rabbit IgG

Storage Buffer

Supplied in PBS (pH 7.4) containing 50% glycerol, and 0.02% sodium azide.

Storage

Store at -20 °C for one year.

Recommended Dilutions

Western Blotting (WB): 1:1,000-1:5,000

Flow Cytometry (FCM): 1:2,000

SUPPORT

SUPPORT@GENUINBIOTECH.COM
TEL: +1-540-855-7041

ORDERS

SALES@GENUINBIOTECH.COM
FAX: +1-540-855-7041

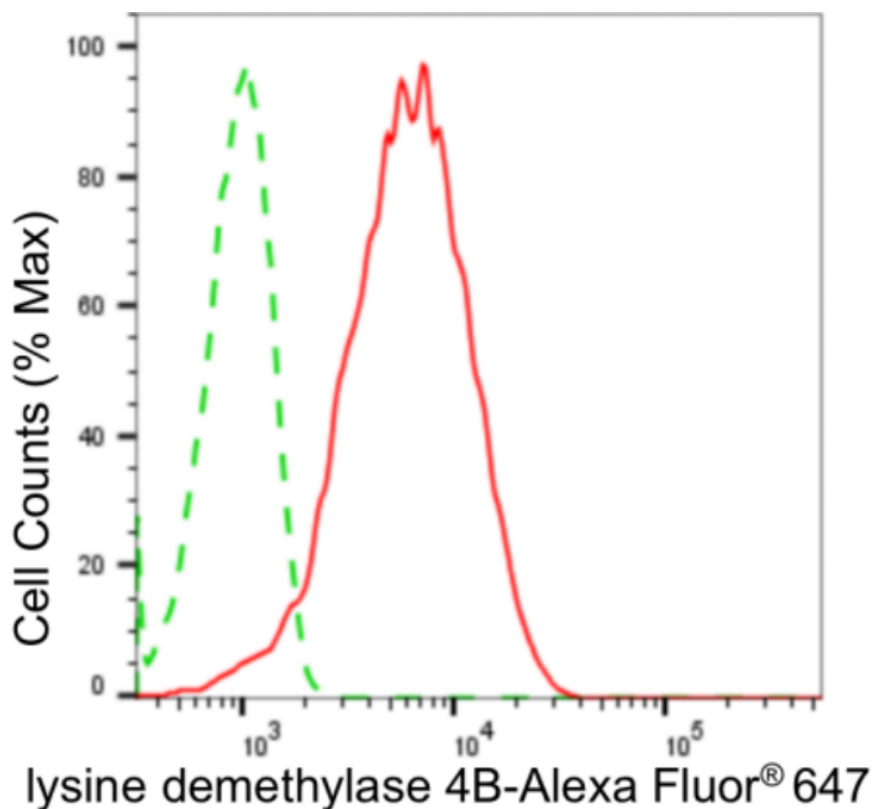
WWW.GENUINBIOTECH.COM

Anti-Lysine Demethylase 4B Rabbit Monoclonal Antibody

PAGE 2

Note: This product is for research use only.

Validation Data



Copyright ©2024 Genuin Biotechnologies LLC

Flow cytometric analysis of lysine demethylase 4B expression in HepG2 cells using anti-lysine demethylase 4B antibody (Cat#3294, 1:2,000). Green, isotype control; red, lysine demethylase 4B.

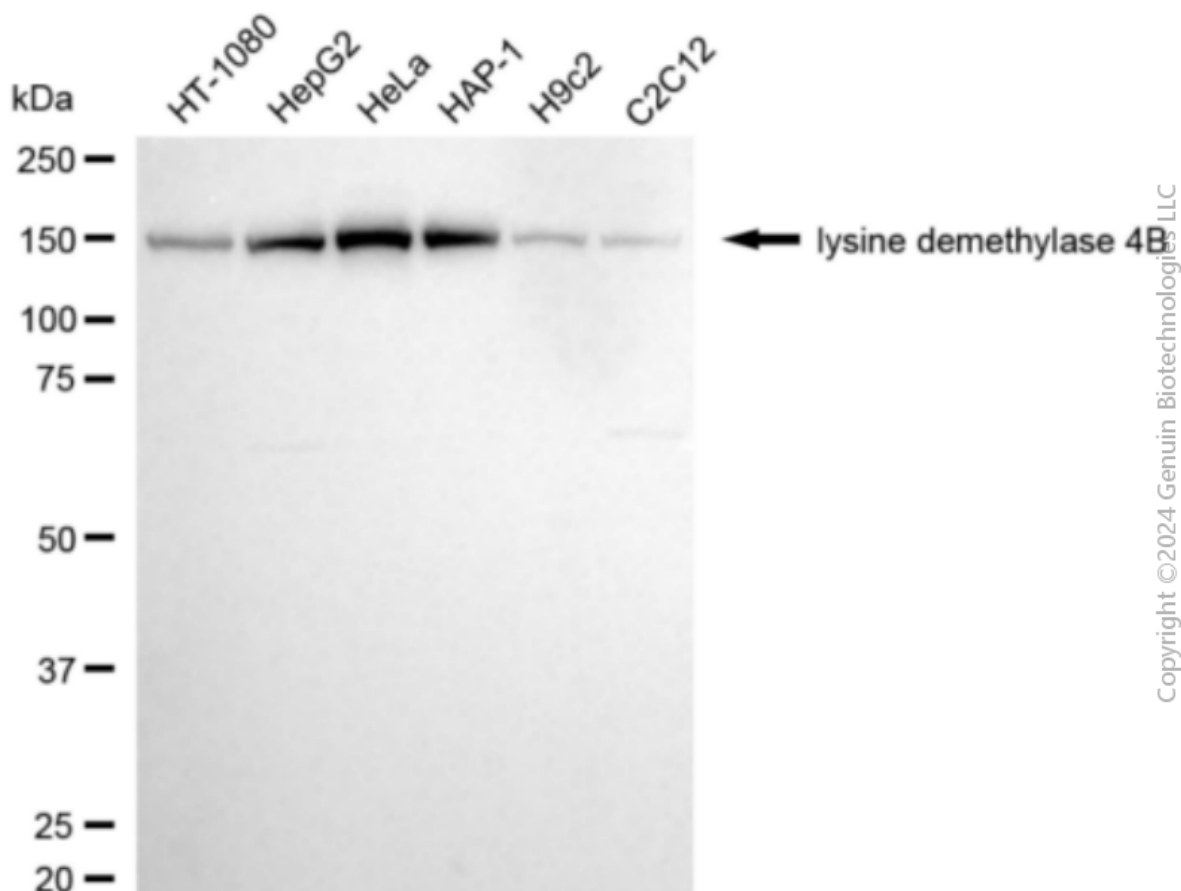
SUPPORT

SUPPORT@GENUINBIOTECH.COM
TEL: +1-540-855-7041

ORDERS

SALES@GENUINBIOTECH.COM
FAX: +1-540-855-7041

WWW.GENUINBIOTECH.COM



Western blotting analysis using anti-lysine demethylase 4B antibody (Cat#3294). Total cell lysates (30 µg) from various cell lines were loaded and separated by SDS-PAGE. The blot was incubated with anti-lysine demethylase 4B antibody (Cat#3294, 1:5,000) and HRP-conjugated goat anti-rabbit secondary antibody (Cat#201, 1:20,000) respectively. Image was developed using NaQ™ ECL Substrate Kit (Cat#716).