

# Anti-L1 Cell Adhesion Molecule Rabbit Monoclonal Antibody



**Catalog #: 3296**

## Aliases

L1CAM; L1 Cell Adhesion Molecule; NCAM-L1; CAML1; Neural Cell Adhesion Molecule L1; CD171; MIC5; Antigen Identified By Monoclonal Antibody R1; N-CAM-L1; HSAS1; HSAS; MASA; SPG1; S10; CD171 Antigen; N-CAML1; HYCX

## Background

Gene Name: L1CAM

NCBI Gene Entry: [3897](#)

UniProt Entry: [P32004](#)

## Application Information

Molecular Weight: Predicted, 140 kDa; observed, 250 kDa

Clonality: Rabbit monoclonal antibody

Clone ID: 24GB4935

Species Reactivity: Human

Applications Tested: Western blotting (WB), flow cytometry (FCM)

## Immunogen

Recombinant protein of human L1CAM

## Isotype

Rabbit IgG

## Storage Buffer

Supplied in PBS (pH 7.4) containing 50% glycerol, and 0.02% sodium azide.

## Storage

Store at -20 °C for one year.

## Recommended Dilutions

Western Blotting (WB): 1:1,000-1:5,000

Flow Cytometry (FCM): 1:2,000

**Note:** This product is for research use only.

## Validation Data

---

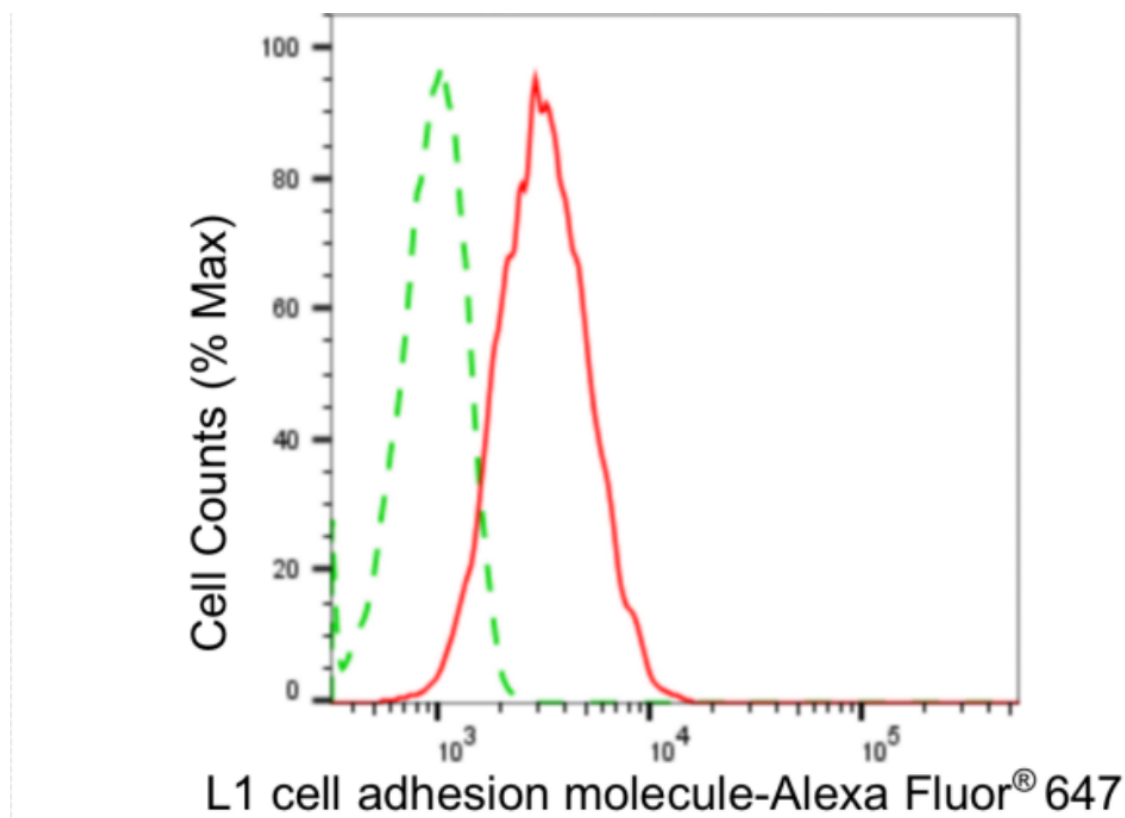
### SUPPORT

SUPPORT@GENUINBIOTECH.COM  
TEL: +1-540-855-7041

### ORDERS

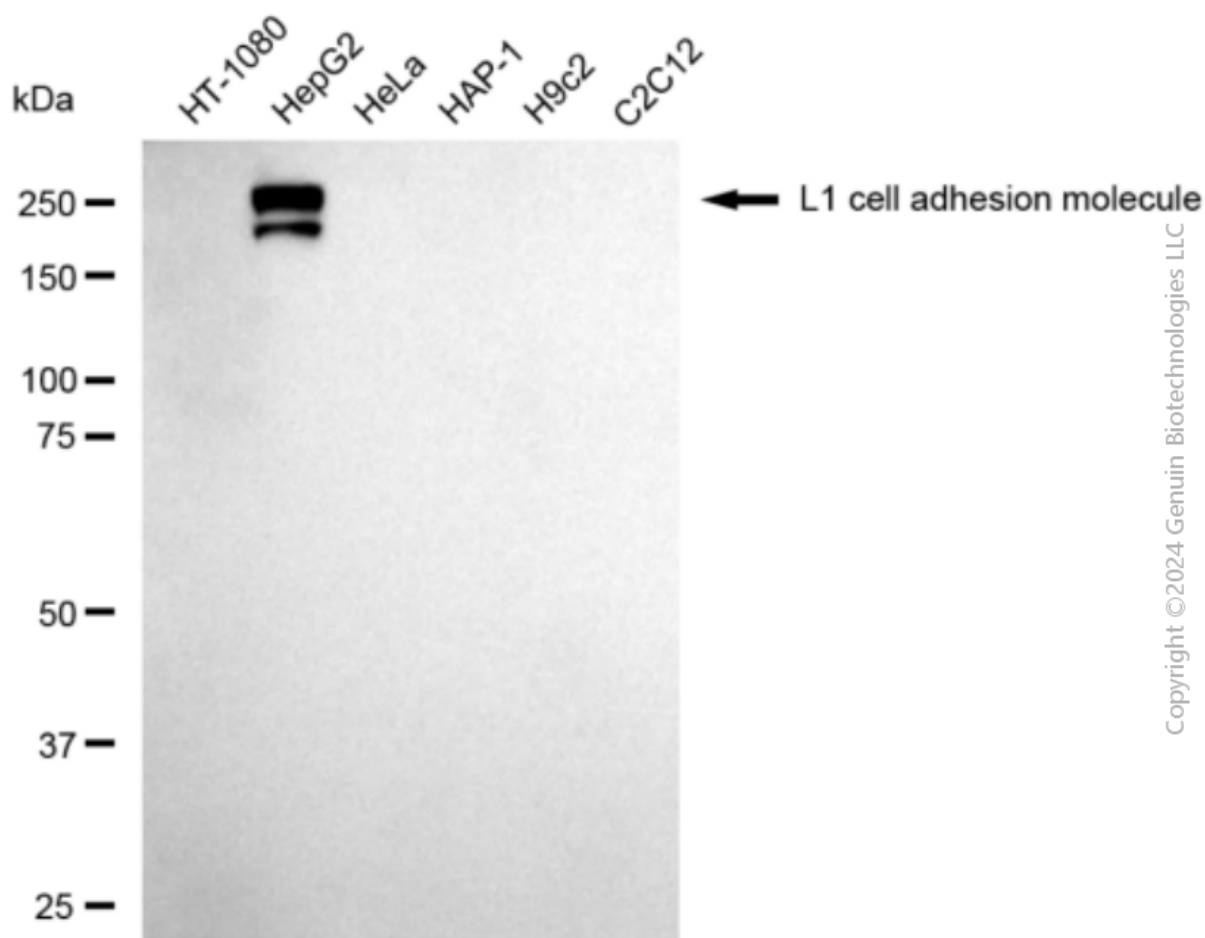
SALES@GENUINBIOTECH.COM  
FAX: +1-540-855-7041

[WWW.GENUINBIOTECH.COM](http://WWW.GENUINBIOTECH.COM)



Copyright ©2024 Genuin Biotechnologies LLC

Flow cytometric analysis of L1 cell adhesion molecule expression in HepG2 cells using anti-L1 cell adhesion molecule antibody (Cat#3296, 1:2,000). Green, isotype control; red, L1 cell adhesion molecule.



Western blotting analysis using anti-L1 cell adhesion molecule antibody (Cat#3296). Total cell lysates (30 µg) from various cell lines were loaded and separated by SDS-PAGE. The blot was incubated with anti-L1 cell adhesion molecule antibody (Cat#3296, 1:5,000) and HRP-conjugated goat anti-rabbit secondary antibody (Cat#201, 1:20,000) respectively. Image was developed using NaQ™ ECL Substrate Kit (Cat#716).