

Catalog #: 3300

Aliases

MAP1LC3B; Microtubule Associated Protein 1 Light Chain 3 Beta 2; ATG8F 2; Microtubule-Associated Proteins 1A/1B Light Chain 3B; Autophagy-Related Ubiquitin-Like Modifier LC3 B; MAP1 Light Chain 3-Like Protein 2; MAP1A/MAP1B Light Chain 3 B; MAP1A/MAP1B LC3 B; Microtubule-Associated Protein 1 Light Chain 3 Beta; Autophagy-Related Protein LC3 B; MAP1A/1BLC3; MAP1LC3B-A; MAP1ALC3; LC3B

Background

Gene Name: MAP1LC3B

NCBI Gene Entry: [81631](#)

UniProt Entry: [Q9GZQ8](#)

Application Information

Molecular Weight: Predicted, 15 kDa; observed, 14,16 kDa

Clonality: Rabbit monoclonal antibody

Clone ID: 24GB4955

Species Reactivity: Human, mouse, rat

Applications Tested: Western blotting (WB), flow cytometry (FCM), immunocytochemistry (IC), Immunohistochemistry (IHC)

Immunogen

A synthesized peptide derived from human LC3B

Isotype

Rabbit IgG

Storage Buffer

Supplied in PBS (pH 7.4) containing 50% glycerol, and 0.02% sodium azide.

Storage

Store at -20 °C for one year.

Recommended Dilutions

Western Blotting (WB): 1:1,000-1:5,000

Flow Cytometry (FCM): 1:2,000

Immunocytochemistry (IC): 1:100-1:1,000

SUPPORT

SUPPORT@GENUINBIOTECH.COM
TEL: +1-540-855-7041

ORDERS

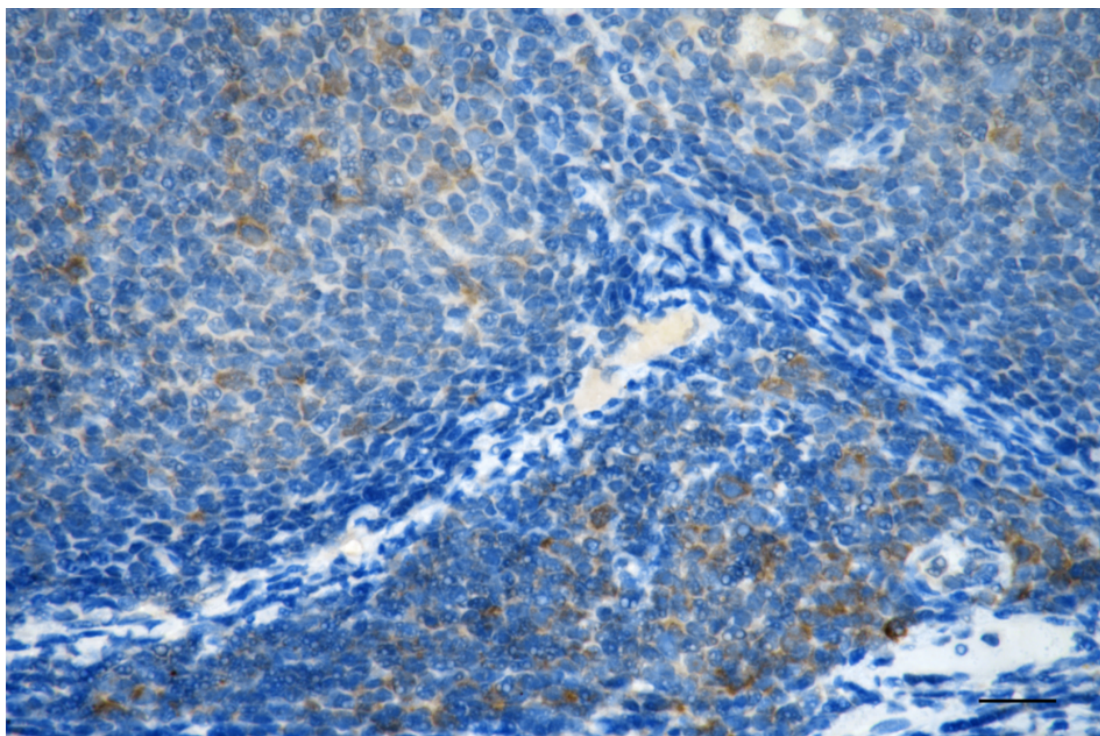
SALES@GENUINBIOTECH.COM
FAX: +1-540-855-7041

WWW.GENUINBIOTECH.COM

Immunohistochemistry (IHC): 1:100-1:200

Note: This product is for research use only.

Validation Data



Copyright ©2025 Genuin Biotechnologies LLC

Immunohistochemistry was performed on paraffin-embedded human lymphoma using anti-LC3B antibody (Cat#3300, 1:200). Antigen retrieval was done in sodium citrate buffer (pH 6.0). DAB was used for detection, with hematoxylin counterstaining. Images were acquired using a Nikon Ci-L Plus microscope (40× objective). Scale bar: 25 μ m.

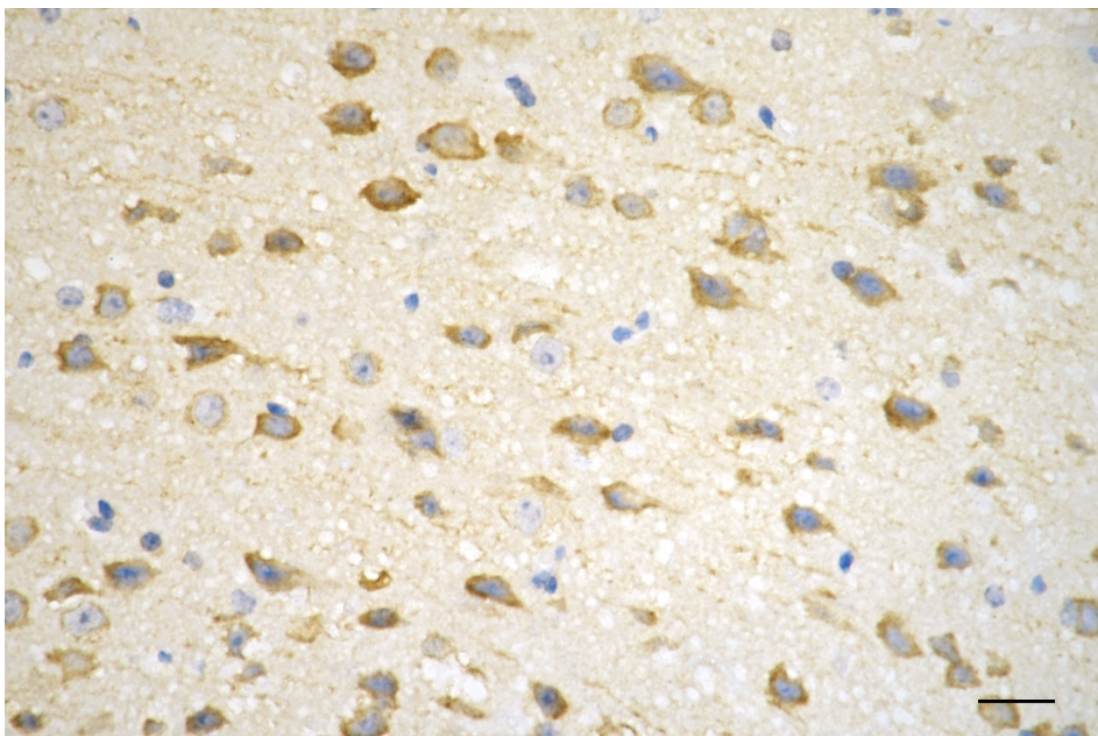
SUPPORT

SUPPORT@GENUINBIOTECH.COM
TEL: +1-540-855-7041

ORDERS

SALES@GENUINBIOTECH.COM
FAX: +1-540-855-7041

WWW.GENUINBIOTECH.COM



Copyright ©2025 Genuin Biotechnologies LLC

Immunohistochemistry was performed on paraffin-embedded mouse brain using anti-LC3B antibody (Cat#3300, 1:200). Antigen retrieval was done in sodium citrate buffer (pH 6.0). DAB was used for detection, with hematoxylin counterstaining. Images were acquired using a Nikon Ci-L Plus microscope (40× objective). Scale bar: 25 μ m.

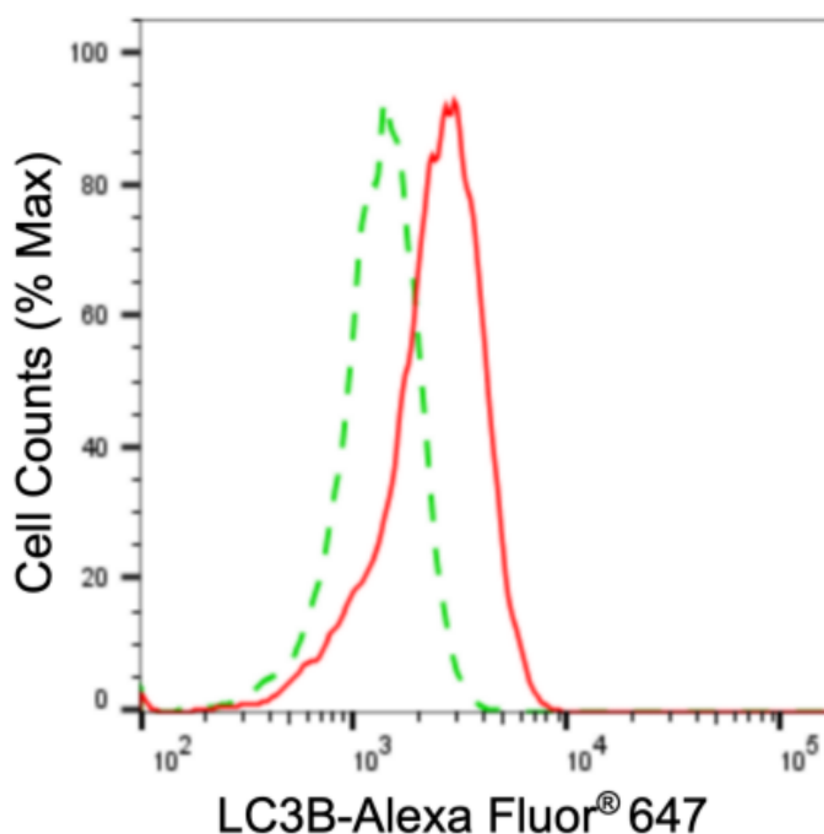
SUPPORT

SUPPORT@GENUINBIOTECH.COM
TEL: +1-540-855-7041

ORDERS

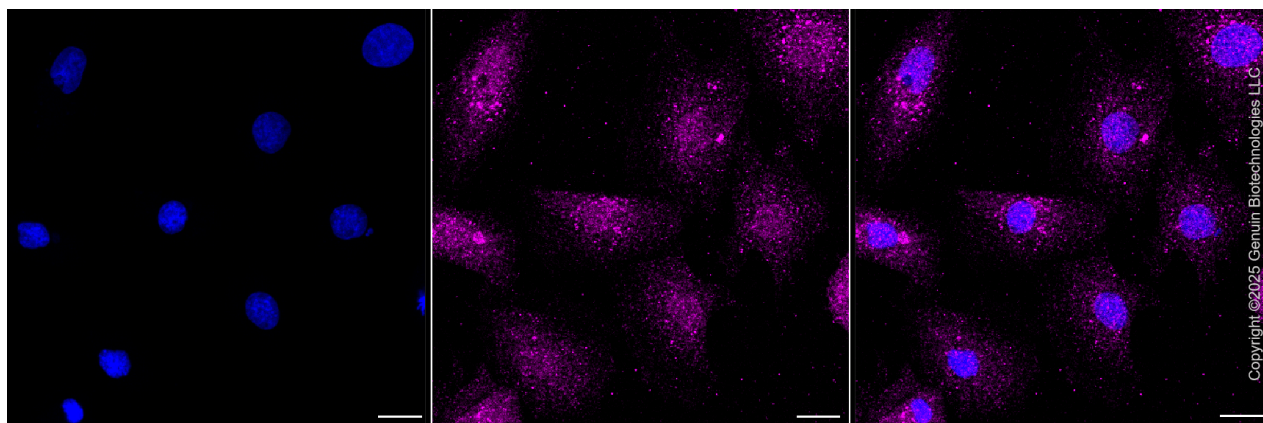
SALES@GENUINBIOTECH.COM
FAX: +1-540-855-7041

WWW.GENUINBIOTECH.COM



Copyright ©2024 Genuin Biotechnologies LLC

Flow cytometric analysis of LC3B expression in H9c2 cells using anti-LC3B antibody (Cat#3300, 1:2,000). Green, isotype control; red, LC3B.



Immunocytochemical staining of H9c2 cells with anti-LC3B antibody (Cat#3300, 1:1,000) . Nuclei were stained blue with DAPI; LC3B was stained magenta with Alexa Fluor® 647. Images were taken using Leica stellaris 5. Protein abundance based on laser Intensity and smart gain □ Medium. Scale bar, 20 µm.

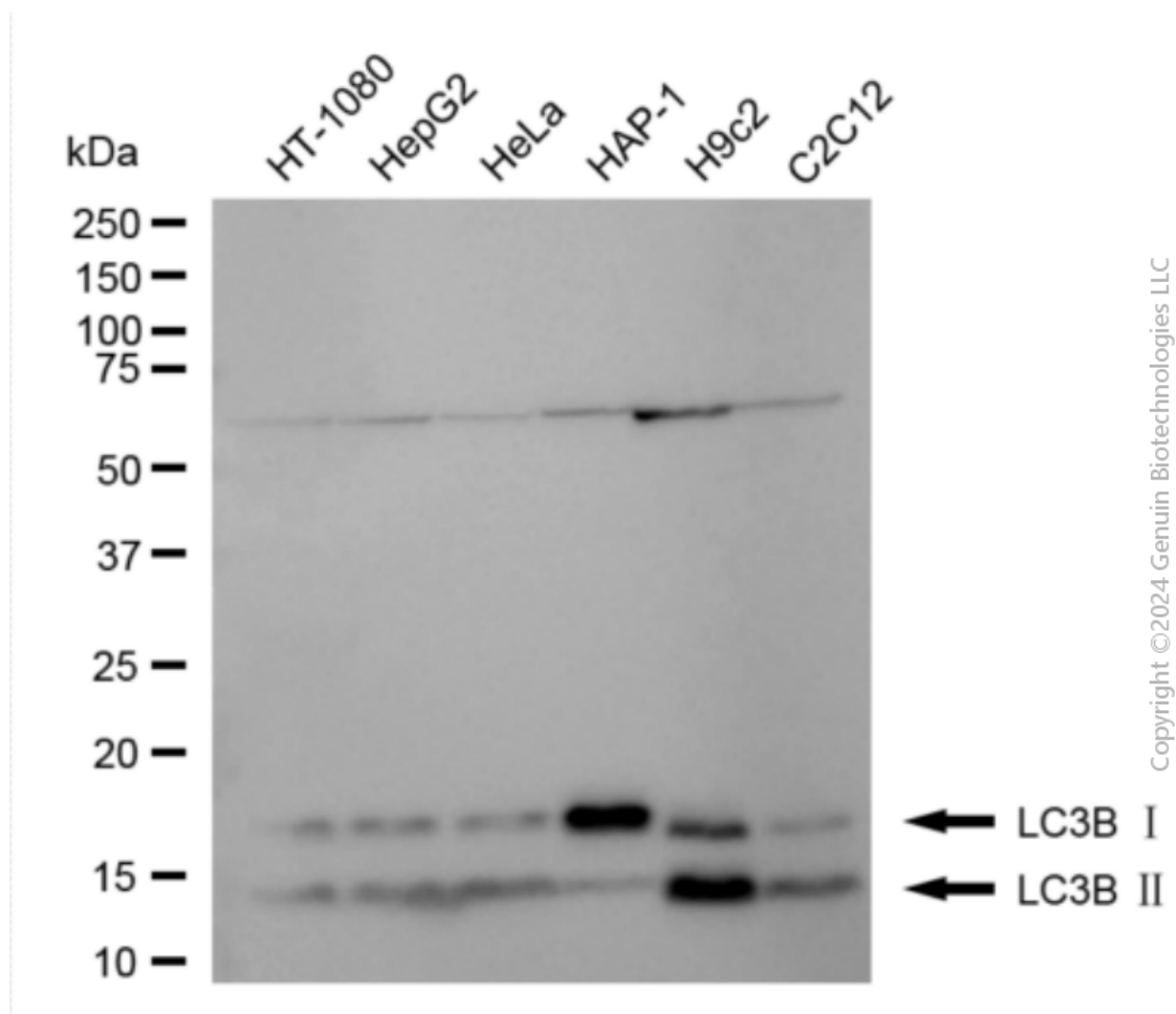
SUPPORT

SUPPORT@GENUINBIOTECH.COM
TEL: +1-540-855-7041

ORDERS

SALES@GENUINBIOTECH.COM
FAX: +1-540-855-7041

WWW.GENUINBIOTECH.COM



Western blotting analysis using anti-LC3B antibody (Cat#3300). Total cell lysates (30 μ g) from various cell lines were loaded and separated by SDS-PAGE. The blot was incubated with anti-LC3B antibody (Cat#3300, 1:5,000) and HRP-conjugated goat anti-rabbit secondary antibody (Cat#201, 1:20,000) respectively. Image was developed using NaQ™ ECL Substrate Kit (Cat#716).