

# Anti-Mannose Receptor C-Type 1 Rabbit Monoclonal Antibody



**Catalog #: 3304**

## Aliases

MRC1; Mannose Receptor C-Type 1; CLEC13DL; CLEC13D; BA541I19.1; MRC1L1; CD206; Macrophage Mannose Receptor 1-Like Protein 1; C-Type Lectin Domain Family 13 Member D; Mannose Receptor, C Type 1-Like 1; Macrophage Mannose Receptor ; Human Mannose Receptor; MMR; HMR; C-Type Lectin Domain Family 13 Member D-Like; Macrophage Mannose Receptor; Mannose Receptor, C Type 1; CD206 Antigen

## Background

Gene Name: MRC1

NCBI Gene Entry: [4360](#)

UniProt Entry: [P22897](#)

## Application Information

Molecular Weight: Predicted, 166 kDa; observed, 166 kDa

Clonality: Rabbit monoclonal antibody

Clone ID: 24GB4975

Species Reactivity: Human, mouse, rat

Applications Tested: Western blotting (WB), flow cytometry (FCM), immunocytochemistry (IC), immunohistochemistry (IHC)

## Immunogen

A synthesized peptide derived from human Mannose Receptor

## Isotype

Rabbit IgG

## Storage Buffer

Supplied in PBS (pH 7.4) containing 50% glycerol, and 0.02% sodium azide.

## Storage

Store at -20 °C for one year.

## Recommended Dilutions

Western Blotting (WB): 1:1,000-1:5,000

Flow Cytometry (FCM): 1:2,000

Immunocytochemistry (IC): 1:100-1:1,000

---

### SUPPORT

SUPPORT@GENUINBIOTECH.COM  
TEL: +1-540-855-7041

### ORDERS

SALES@GENUINBIOTECH.COM  
FAX: +1-540-855-7041

[WWW.GENUINBIOTECH.COM](http://WWW.GENUINBIOTECH.COM)

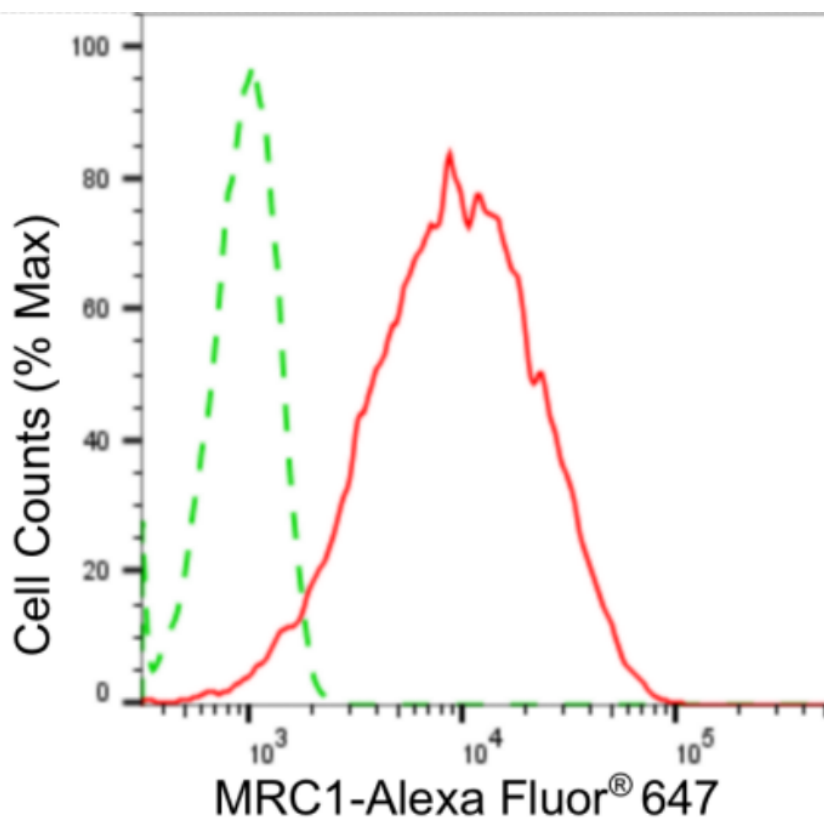
# Anti-Mannose Receptor C-Type 1 Rabbit Monoclonal Antibody

PAGE 2

Immunohistochemistry (IHC): 1:50-1:100

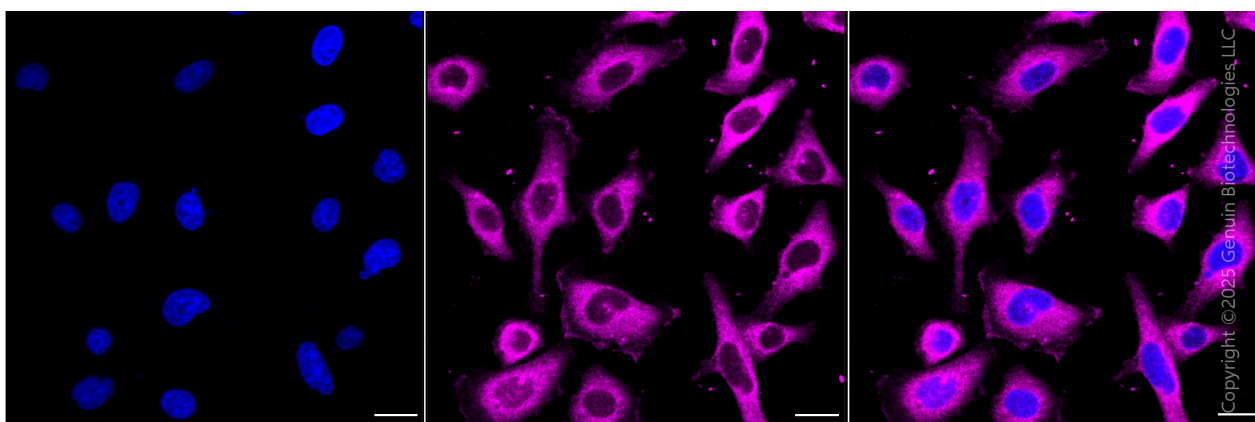
**Note:** This product is for research use only.

## Validation Data



Copyright ©2024 Genuin Biotechnologies LLC

Flow cytometric analysis of MRC1 expression in HepG2 cells using anti-MRC1 antibody (Cat#3304, 1:2,000). Green, isotype control; red, MRC1.



Copyright ©2023 Genuin Biotechnologies LLC

Immunocytochemical staining of HepG2 cells with anti-MRC1 antibody (Cat#3304, 1:1,000). Nuclei were stained blue with DAPI; MRC1 was stained magenta with Alexa Fluor® 647. Images

### SUPPORT

SUPPORT@GENUINBIOTECH.COM  
TEL: +1-540-855-7041

### ORDERS

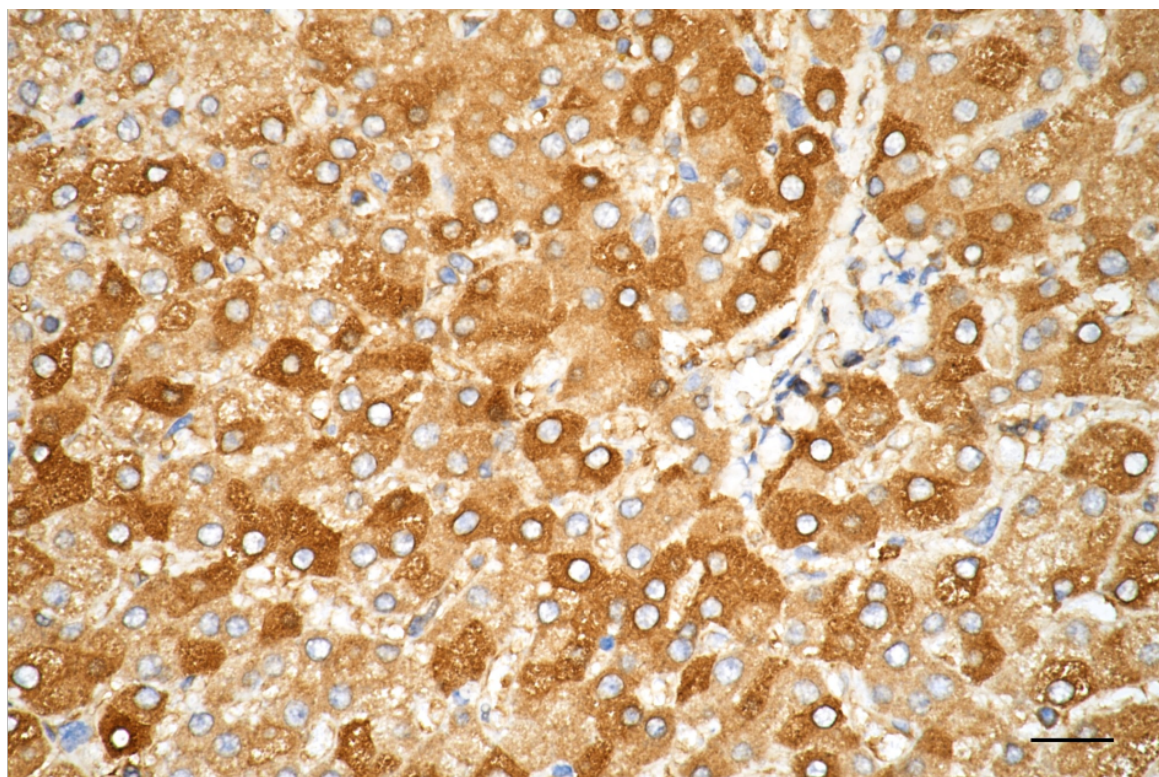
SALES@GENUINBIOTECH.COM  
FAX: +1-540-855-7041

WWW.GENUINBIOTECH.COM

## Anti-Mannose Receptor C-Type 1 Rabbit Monoclonal Antibody

PAGE 3

were taken using Leica stellaris 5. Protein abundance based on laser Intensity and smart gain: Medium. Scale bar, 20  $\mu$ m.



Copyright ©2025 Genuin Biotechnologies LLC

Immunohistochemistry was performed on paraffin-embedded human hepatocarcinoma using anti-MRC1 antibody (Cat#3304, 1:100). Antigen retrieval was done in sodium citrate buffer (pH 6.0). DAB was used for detection, with hematoxylin counterstaining. Images were acquired using a Nikon Ci-L Plus microscope (40 $\times$  objective). Scale bar: 25  $\mu$ m.

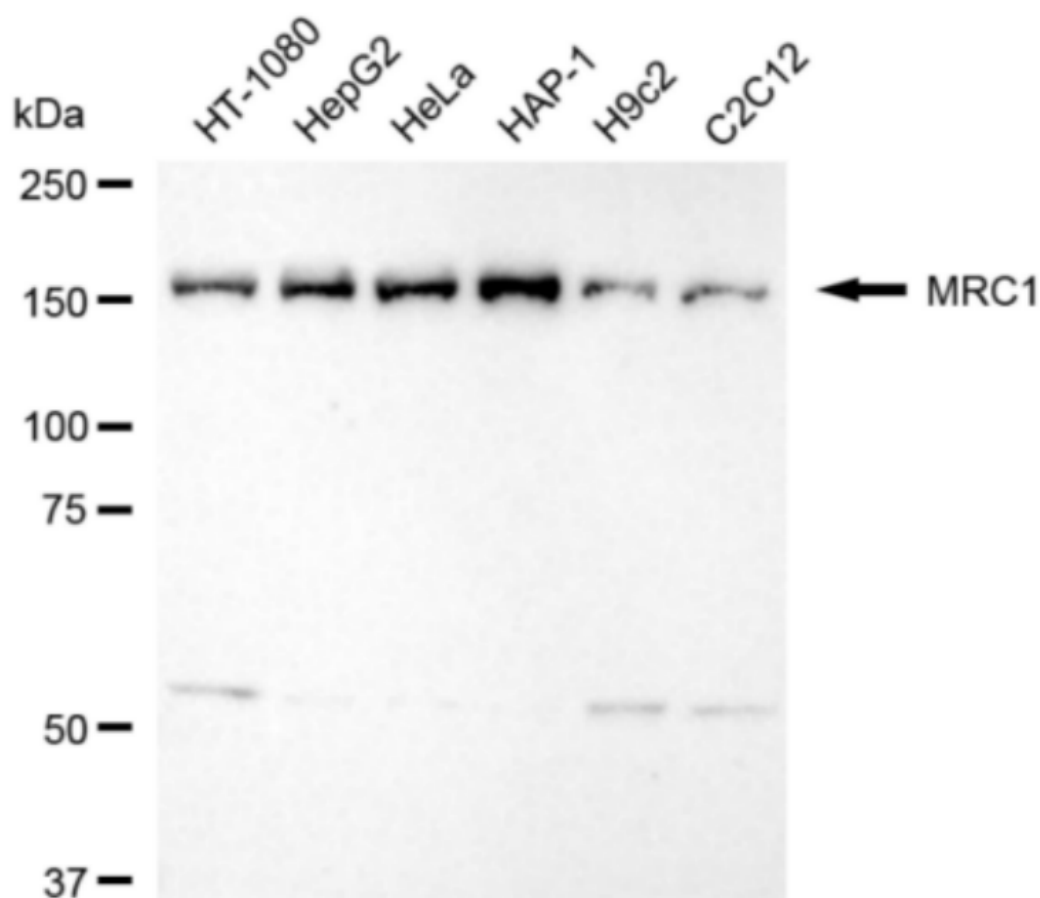
### SUPPORT

SUPPORT@GENUINBIOTECH.COM  
TEL: +1-540-855-7041

### ORDERS

SALES@GENUINBIOTECH.COM  
FAX: +1-540-855-7041

[WWW.GENUINBIOTECH.COM](http://WWW.GENUINBIOTECH.COM)



Copyright ©2024 Genuin Biotechnologies LLC

Western blotting analysis using anti-MRC1 antibody (Cat#3304). Total cell lysates (30  $\mu$ g) from various cell lines were loaded and separated by SDS-PAGE. The blot was incubated with anti-MRC1 antibody (Cat#3304, 1:5,000) and HRP-conjugated goat anti-rabbit secondary antibody (Cat#201, 1:20,000) respectively. Image was developed using NaQ™ ECL Substrate Kit (Cat#716). MRC1, mannose receptor C-type 1.