

Catalog #: 3314

Aliases

PDGFRB; Platelet Derived Growth Factor Receptor Beta; PDGFR1; CD140b; JTK12;
PDGFR; Platelet-Derived Growth Factor Receptor, Beta Polypeptide; Beta-Type Platelet-Derived Growth Factor Receptor; Platelet-Derived Growth Factor Receptor Beta; Platelet-Derived Growth Factor Receptor 1; CD140 Antigen-Like Family Member B; PDGF-R-Beta; EC 2.7.10.1 4;
PDGFR-Beta; PDGFR-1; Beta Platelet-Derived Growth Factor Receptor; Activated Tyrosine Kinase PDGFRB; CD140b Antigen; NDEL1-PDGFRB;
EC 2.7.10; IBGC4; PENTT; IMF1; KOGS

Background

Gene Name: PDGFRB

NCBI Gene Entry: [5159](#)

UniProt Entry: [P09619](#)

Application Information

Molecular Weight: Predicted, 124 kDa, observed, 190 kDa

Clonality: Rabbit monoclonal antibody

Clone ID: 24GB5020

Species Reactivity: Mouse, rat

Applications Tested: Western blotting (WB), flow cytometry (FCM), immunocytochemistry (IC)

Immunogen

A synthesized peptide derived from human PDGFR beta

Isotype

Rabbit IgG

Storage Buffer

Supplied in PBS (pH 7.4) containing 50% glycerol, and 0.02% sodium azide.

Storage

Store at -20 °C for one year.

Recommended Dilutions

Western Blotting (WB): 1:1,000-1:5,000

Flow Cytometry (FCM): 1:2,000

SUPPORT

SUPPORT@GENUINBIOTECH.COM
TEL: +1-540-855-7041

ORDERS

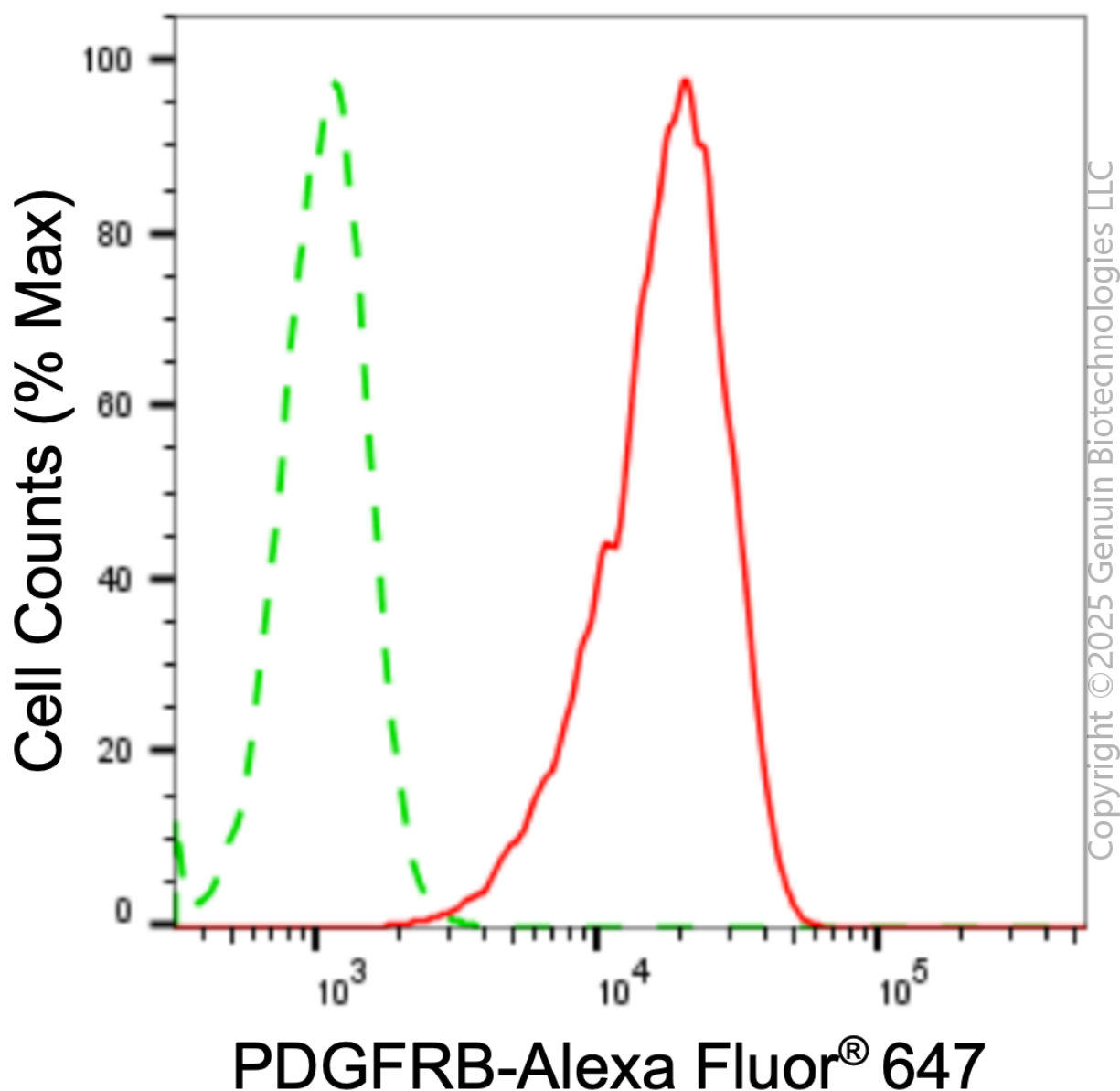
SALES@GENUINBIOTECH.COM
FAX: +1-540-855-7041

WWW.GENUINBIOTECH.COM

Immunocytochemistry (IC): 1:100-1:1,000

Note: This product is for research use only.

Validation Data



Flow cytometric analysis of PDGFRB expression in C2C12 cells using anti-PDGFRB antibody (Cat#3314, 1:2,000). Green, isotype control; red, PDGFRB.

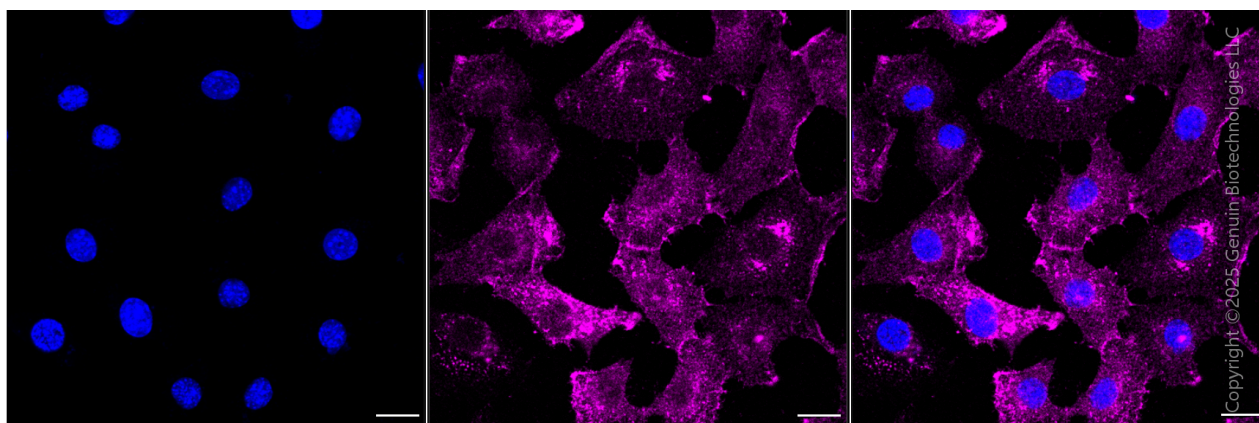
SUPPORT

SUPPORT@GENUINBIOTECH.COM
TEL: +1-540-855-7041

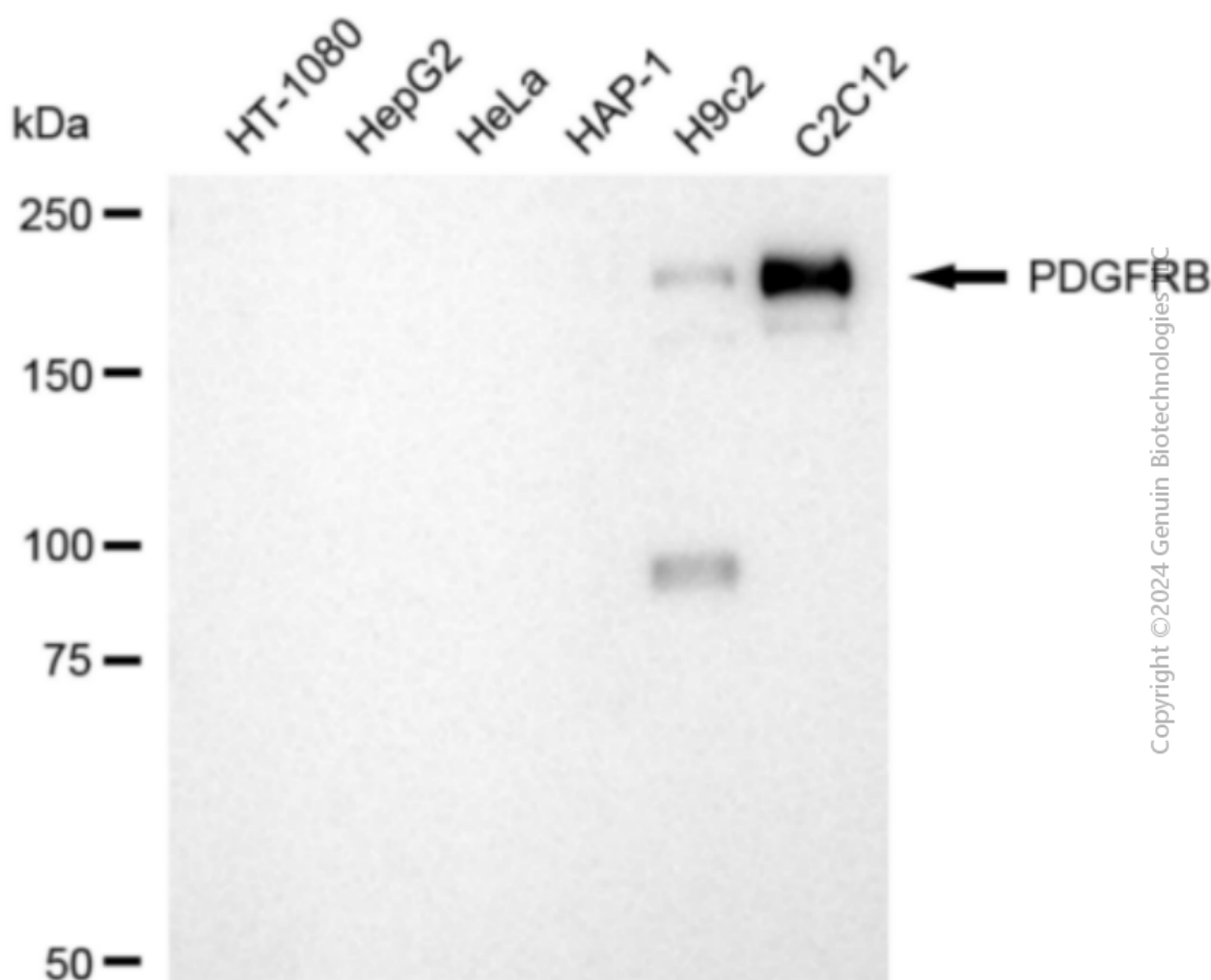
ORDERS

SALES@GENUINBIOTECH.COM
FAX: +1-540-855-7041

WWW.GENUINBIOTECH.COM



Immunocytochemical staining of C2C12 cells with anti-PDGFRB antibody (Cat#3314, 1:1,000) . Nuclei were stained blue with DAPI; PDGFRB was stained magenta with Alexa Fluor® 647. Images were taken using Leica stellaris 5. Protein abundance based on laser Intensity and smart gain: Medium. Scale bar, 20 μ m.



Western blotting analysis using anti-PDGFRB antibody (Cat#3314). Total cell lysates (30 μ g)

from various cell lines were loaded and separated by SDS-PAGE. The blot was incubated with anti-PDGFRB antibody (Cat#3314, 1:5,000) and HRP-conjugated goat anti-rabbit secondary antibody (Cat#201, 1:20,000) respectively. Image was developed using NaQ™ ECL Substrate Kit (Cat#716). PDGFRB, platelet derived growth factor receptor beta.