

Catalog #: 3315

Aliases

PIK3R3; Phosphoinositide-3-Kinase Regulatory Subunit; P55; Phosphatidylinositol 3-Kinase 55 KDa Regulatory Subunit Gamma; Phosphoinositide-3-Kinase, Regulatory Subunit 3 (Gamma); Phosphatidylinositol 3-Kinase Regulatory Subunit Gamma; PI3-Kinase Regulatory Subunit Gamma; PI3K Regulatory Subunit Gamma; PI3-Kinase SubunitP55-Gamma; P55PIK; Phosphatidylinositol 3-Kinase, Regulatory Subunit, Polypeptide 3 (P55, Gamma); Phosphoinositide-3-Kinase Regulatory Subunit Gamma; PtdIns-3-Kinase Regulatory Subunit Gamma; P55-GAMMA

Background

Gene Name: PIK3R3

NCBI Gene Entry: [8503](#)

UniProt Entry: [Q92569](#)

Application Information

Molecular Weight: Predicted, 54 kDa; observed, 54 kDa

Clonality: Rabbit monoclonal antibody

Clone ID: 24GB5025

Species Reactivity: Human, mouse, rat

Applications Tested: Western blotting (WB), immunocytochemistry (IC)

Immunogen

A synthesized peptide derived from human PI 3 Kinase p55 gamma

Isotype

Rabbit IgG

Storage Buffer

Supplied in PBS (pH 7.4) containing 50% glycerol, and 0.02% sodium azide.

Storage

Store at -20 °C for one year.

Recommended Dilutions

Western Blotting (WB): 1:1,000-1:5,000

Immunocytochemistry (IC): 1:100-1:1,000

SUPPORT

SUPPORT@GENUINBIOTECH.COM
TEL: +1-540-855-7041

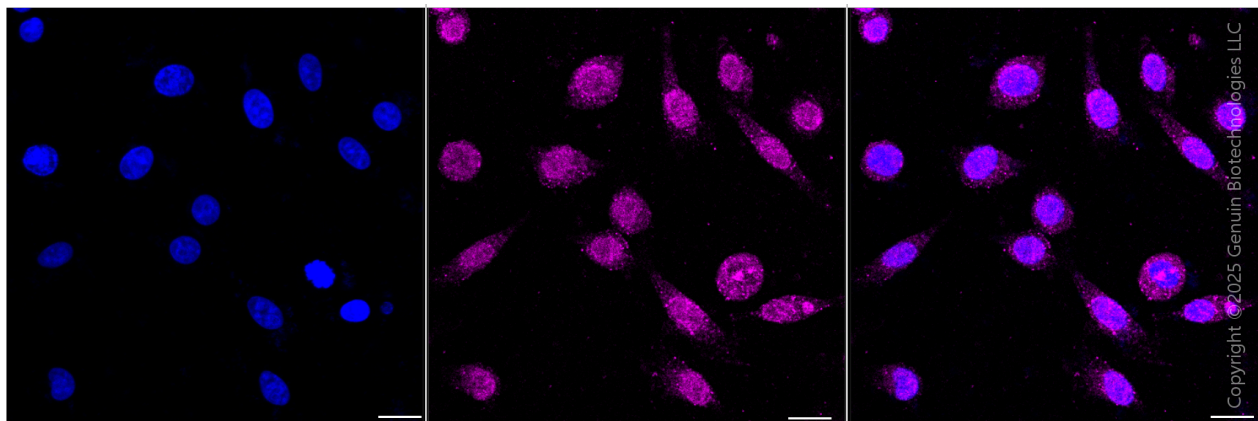
ORDERS

SALES@GENUINBIOTECH.COM
FAX: +1-540-855-7041

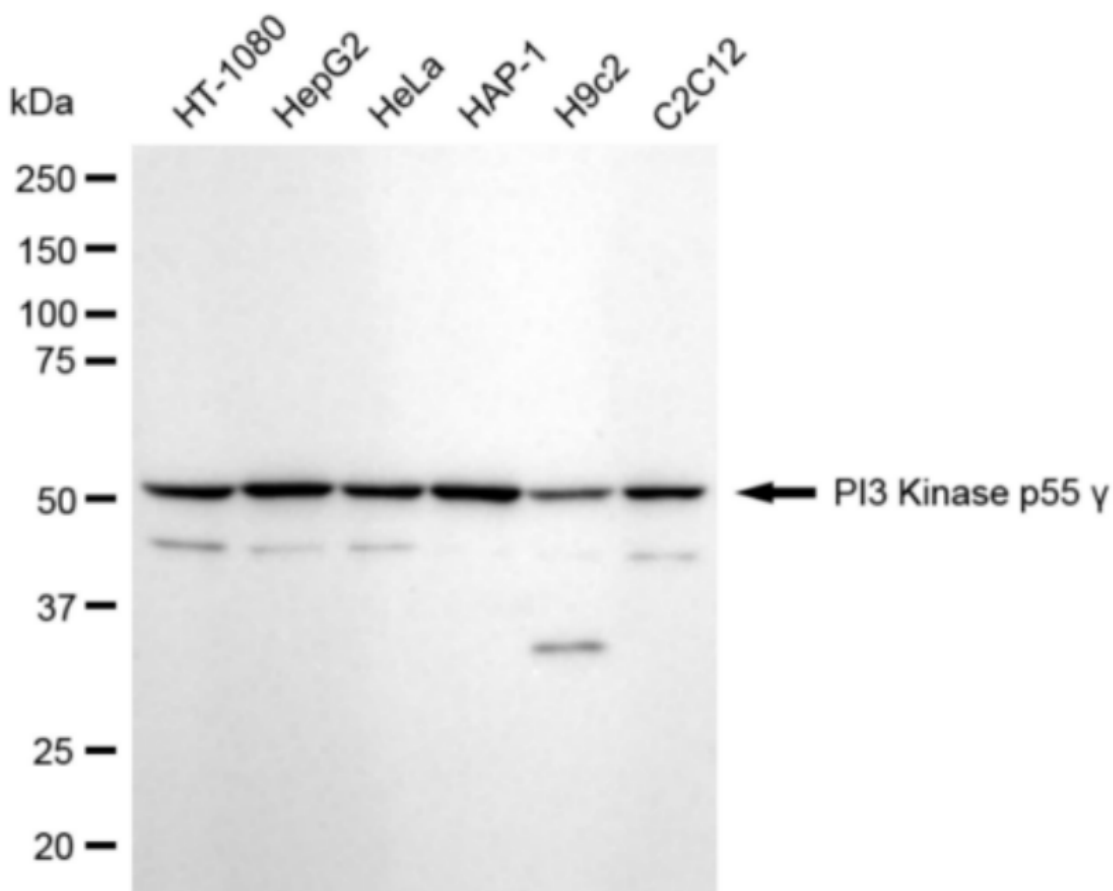
WWW.GENUINBIOTECH.COM

Note: This product is for research use only.

Validation Data



Immunocytochemical staining of HepG2 cells with anti-PI3 Kinase p55 gamma antibody (Cat#3315, 1:1,000). Nuclei were stained blue with DAPI; PI3 Kinase p55 gamma was stained magenta with Alexa Fluor® 647. Images were taken using Leica stellaris 5. Protein abundance based on laser Intensity and smart gain: Low. Scale bar, 20 μ m.



Copyright ©2024 Genuin Biotechnologies LLC

Western blotting analysis using anti-PI3 Kinase p55 gamma antibody (Cat#3315). Total cell lysates (30 µg) from various cell lines were loaded and separated by SDS-PAGE. The blot was incubated with anti-PI3 Kinase p55 gamma antibody (Cat#3315, 1:5,000) and HRP-conjugated goat anti-rabbit secondary antibody (Cat#201, 1:20,000) respectively. Image was developed using NaQ™ ECL Substrate Kit (Cat#716).

SUPPORT

SUPPORT@GENUINBIOTECH.COM
TEL: +1-540-855-7041

ORDERS

SALES@GENUINBIOTECH.COM
FAX: +1-540-855-7041

WWW.GENUINBIOTECH.COM