

# Anti-PPARG Coactivator 1 Alpha Rabbit Monoclonal Antibody



**Catalog #: 3318**

## Aliases

PPARGC1A; PPARG Coactivator 1 Alpha; PGC1A; PGC1; PGC-1alpha; PPARGC1; Peroxisome Proliferator-Activated Receptor Gamma Coactivator 1-Alpha; PPARGgamma Coactivator 1alpha; PPARGC-1-Alpha; PGC-1-Alpha; LEM6; Peroxisome Proliferative Activated Receptor, Gamma, Coactivator 1, Alpha; Peroxisome Proliferator-Activated Receptor Gamma, Coactivator 1 Alpha; Peroxisome Proliferative Activated Receptor, Gamma, Coactivator 1; PPARG Gamma Coactivator Variant Form; PPARG-Gamma Coactivator 1-Alpha; Ligand Effect Modulator-6; Ligand Effect Modulator 6; PPARGC1alpha; PGC-1(Alpha); L-PGC-1alpha; PPARGC1 $\alpha$ ; PPARGC1A; PGC-1v; PGC1 alpha

## Background

Gene Name: PPARGC1A

NCBI Gene Entry: [10891](#)

UniProt Entry: [Q9UBK2](#)

## Application Information

Molecular Weight: Predicted, 91 kDa; observed, 113 kDa

Clonality: Rabbit monoclonal antibody

Clone ID: 24GB5035

Species Reactivity: Human, mouse, rat

Applications Tested: Western blotting (WB), flow cytometry (FCM)

## Immunogen

A synthesized peptide derived from human PGC1 alpha

## Isotype

Rabbit IgG

## Storage Buffer

Supplied in PBS (pH 7.4) containing 50% glycerol, and 0.02% sodium azide.

## Storage

Store at -20 °C for one year.

## Recommended Dilutions

Western Blotting (WB): 1:1,000-1:5,000

---

### SUPPORT

SUPPORT@GENUINBIOTECH.COM  
TEL: +1-540-855-7041

### ORDERS

SALES@GENUINBIOTECH.COM  
FAX: +1-540-855-7041

[WWW.GENUINBIOTECH.COM](http://WWW.GENUINBIOTECH.COM)

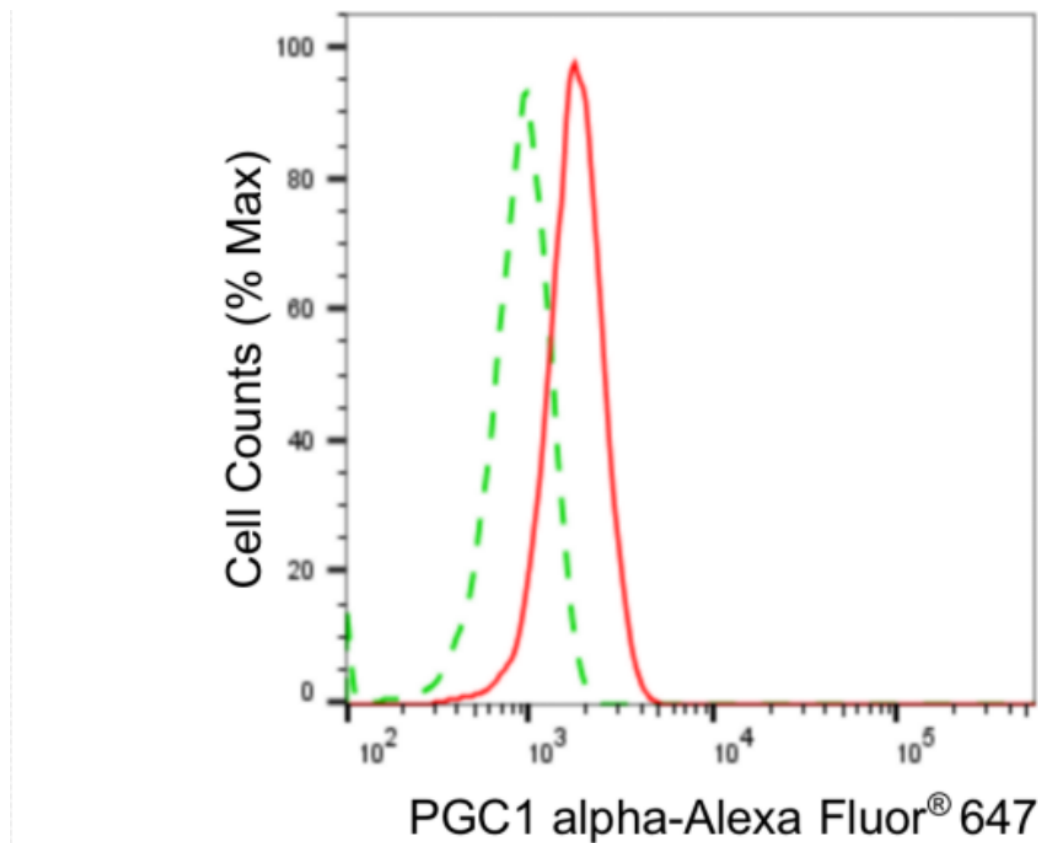
# Anti-PPARG Coactivator 1 Alpha Rabbit Monoclonal Antibody

PAGE 2

Flow Cytometry (FCM): 1:2,000

**Note:** This product is for research use only.

## Validation Data



Copyright ©2024 Genuin Biotechnologies LLC

Flow cytometric analysis of PGC1 alpha expression in C2C12 cells using anti-PGC1 alpha antibody (Cat#3318, 1:2,000). Green, isotype control; red, PGC1 alpha.

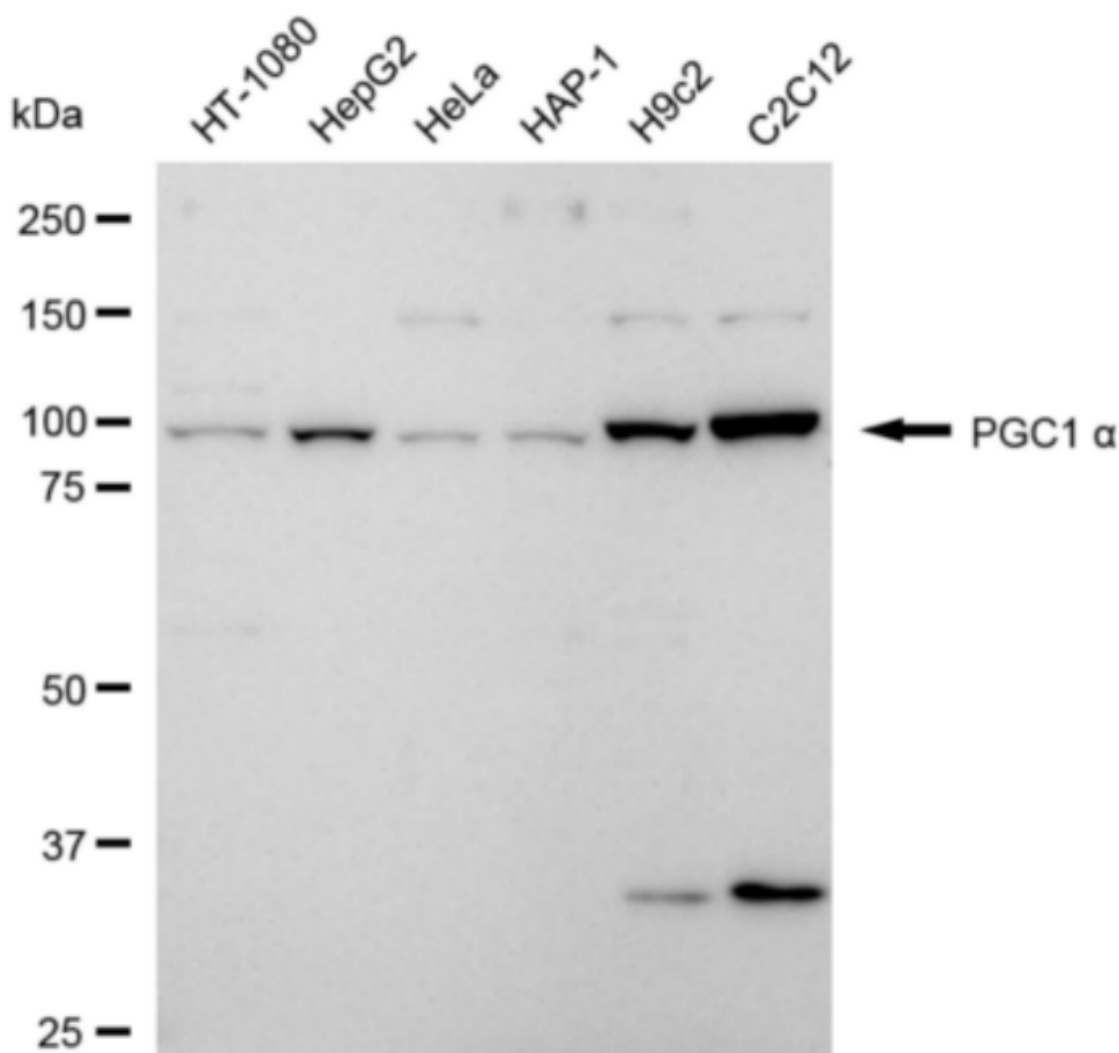
### SUPPORT

SUPPORT@GENUINBIOTECH.COM  
TEL: +1-540-855-7041

### ORDERS

SALES@GENUINBIOTECH.COM  
FAX: +1-540-855-7041

[WWW.GENUINBIOTECH.COM](http://WWW.GENUINBIOTECH.COM)



Copyright ©2024 Genuin Biotechnologies LLC

Western blotting analysis using anti-PGC1 alpha antibody (Cat#3318). Total cell lysates (30 µg) from various cell lines were loaded and separated by SDS-PAGE. The blot was incubated with anti-PGC1 alpha antibody (Cat#3318, 1:5,000) and HRP-conjugated goat anti-rabbit secondary antibody (Cat#201, 1:20,000) respectively. Image was developed using NaQ™ ECL Substrate Kit (Cat#716).