

Anti-Proteasome 20S Subunit Beta 10 Rabbit Monoclonal Antibody



Catalog #: 3322

Aliases

PSMB10; Proteasome 20S Subunit Beta 10; LMP10; MECL1; Proteasome (Prosome, Macropain) Subunit, Beta Type, 10; Multicatalytic Endopeptidase Complex Subunit MECL1; Proteasome Subunit Beta Type-10; Low Molecular Mass Protein 10; Proteasome Subunit Beta 10; Proteasome Subunit Beta-2i; Macropain Subunit MECL1; Proteasome MECL1; EC 3.4.25.1; MGC1665; Beta2i; Proteasome Catalytic Subunit 2i; Proteasome Subunit Beta 7i; Proteasome Subunit Beta2i; Proteasome Subunit MECL1; Proteasome Subunit B2i; PRAAS5; BETA2I

Background

Gene Name: PSMB10

NCBI Gene Entry: [5699](#)

UniProt Entry: [P40306](#)

Application Information

Molecular Weight: Predicted, 29 kDa; observed, 25 kDa

Clonality: Rabbit monoclonal antibody

Clone ID: 24GB5050

Species Reactivity: Human

Applications Tested: Western blotting (WB), flow cytometry (FCM)

Immunogen

A synthesized peptide derived from human PSMB10

Isotype

Rabbit IgG

Storage Buffer

Supplied in PBS (pH 7.4) containing 50% glycerol, and 0.02% sodium azide.

Storage

Store at -20 °C for one year.

Recommended Dilutions

Western Blotting (WB): 1:1,000-1:5,000

Flow Cytometry (FCM): 1:2,000

SUPPORT

SUPPORT@GENUINBIOTECH.COM
TEL: +1-540-855-7041

ORDERS

SALES@GENUINBIOTECH.COM
FAX: +1-540-855-7041

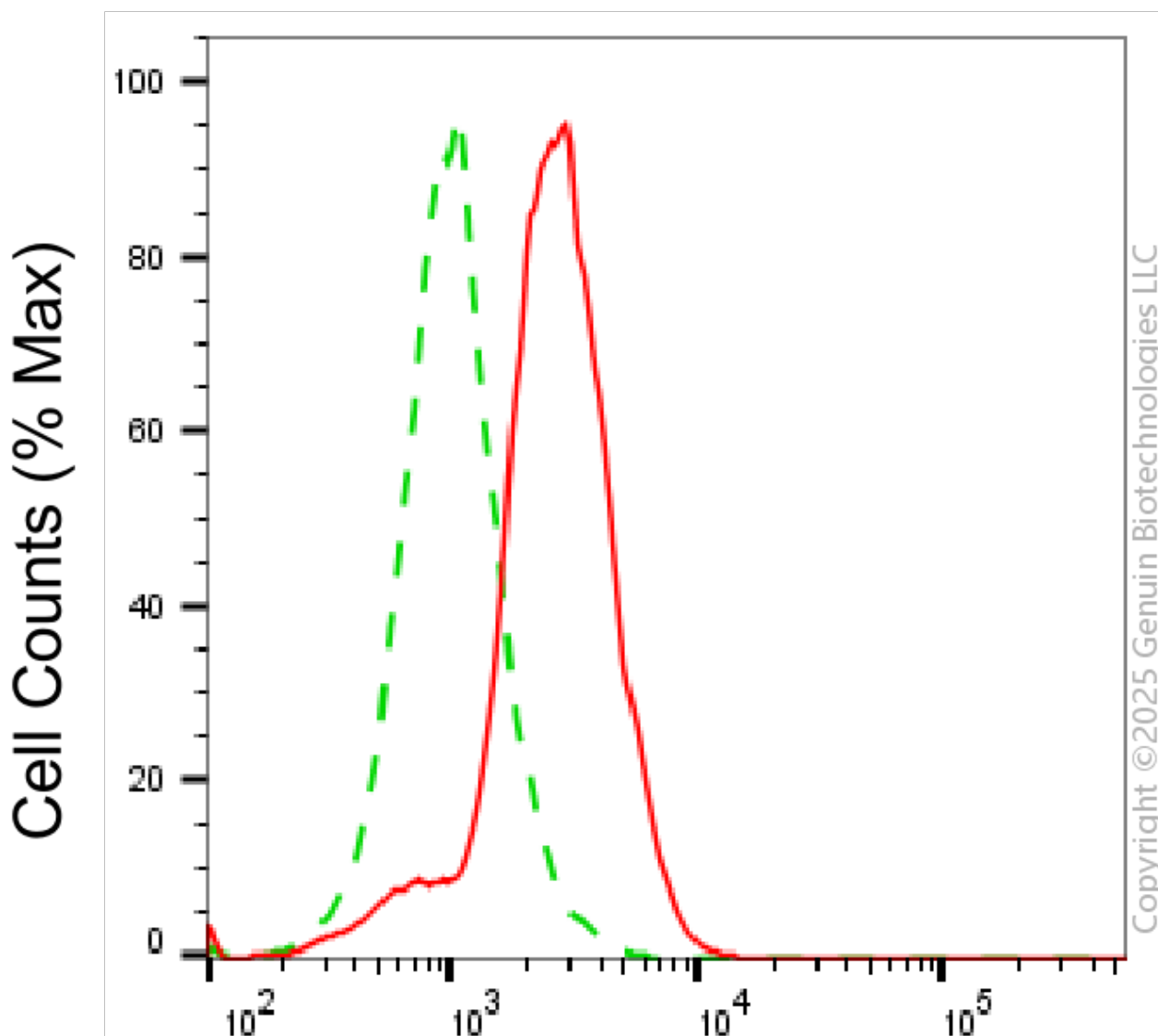
WWW.GENUINBIOTECH.COM

Anti-Proteasome 20S Subunit Beta 10 Rabbit Monoclonal Antibody

PAGE 2

Note: This product is for research use only.

Validation Data



PSMB10-Alexa Fluor® 647

Flow cytometric analysis of PSMB10 expression in C2C12 cells using anti-PSMB10 antibody (Cat#3322, 1:2,000). Green, isotype control; red, PSMB10.

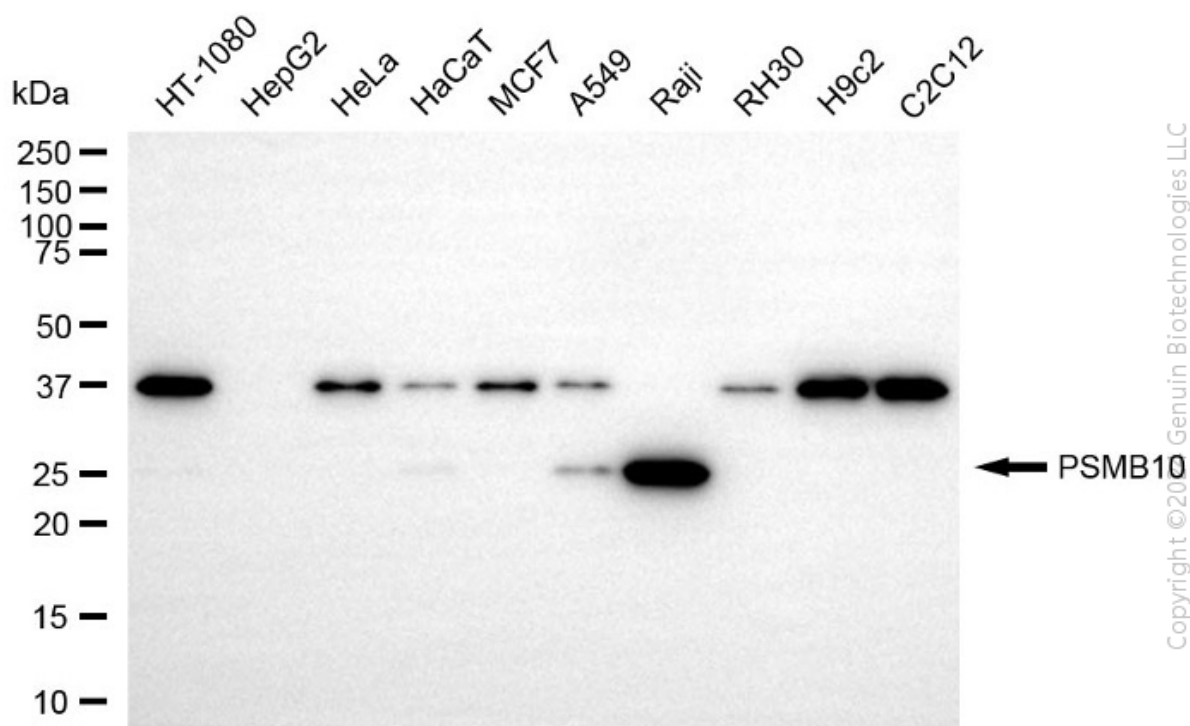
SUPPORT

SUPPORT@GENUINBIOTECH.COM
TEL: +1-540-855-7041

ORDERS

SALES@GENUINBIOTECH.COM
FAX: +1-540-855-7041

WWW.GENUINBIOTECH.COM



Western blotting analysis using anti-PSMB10 antibody (Cat#3322). Total cell lysates (30 µg) from various cell lines were loaded and separated by SDS-PAGE. The blot was incubated with anti-PSMB10 antibody (Cat#3322, 1:5,000) and HRP-conjugated goat anti-rabbit secondary antibody (Cat#201, 1:20,000) respectively. Image was developed using NaQ™ ECL Substrate Kit (Cat#716). PSMB10, proteasome 20S subunit beta 10.