

Catalog #: 3324

Aliases

RAPGEF3; Rap Guanine Nucleotide Exchange Factor 3; CAMP-GEFI; EPAC; Exchange Protein Directly Activated By CAMP 1; Bcm910; Rap1 Guanine-Nucleotide-Exchange Factor Directly Activated By CAMP; CAMP-Regulated Guanine Nucleotide Exchange Factor I; Rap Guanine Nucleotide Exchange Factor (GEF) 3; Exchange Factor Directly Activated By CAMP 1; EPAC 1; EPAC1; RAP Guanine-Nucleotide-Exchange Factor (GEF); 9330170P05Rik; HSU79275; CGEF1

Background

Gene Name: RAPGEF3

NCBI Gene Entry: [10411](#)

UniProt Entry: [O95398](#)

Application Information

Molecular Weight: Predicted, 104 kDa; observed, 104 kDa

Clonality: Rabbit monoclonal antibody

Clone ID: 24GB5060

Species Reactivity: Mouse, rat

Applications Tested: Western blotting (WB), flow cytometry (FCM), immunocytochemistry (IC)

Immunogen

A synthesized peptide derived from human Epac1

Isotype

Rabbit IgG

Storage Buffer

Supplied in PBS (pH 7.4) containing 50% glycerol, and 0.02% sodium azide.

Storage

Store at -20 °C for one year.

Recommended Dilutions

Western Blotting (WB): 1:1,000-1:5,000

Flow Cytometry (FCM): 1:2,000

Immunocytochemistry (IC): 1:100-1:1,000

SUPPORT

SUPPORT@GENUINBIOTECH.COM
TEL: +1-540-855-7041

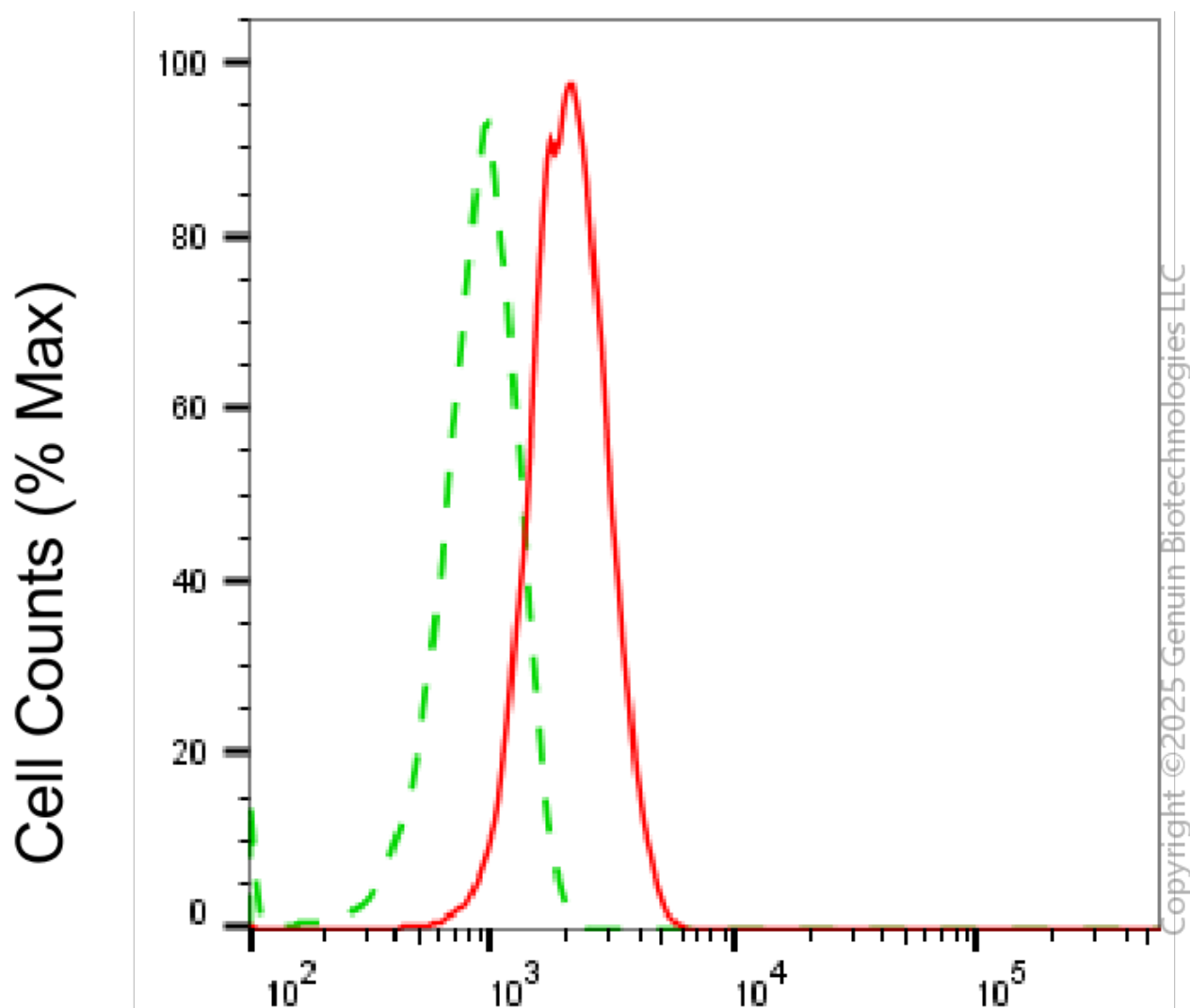
ORDERS

SALES@GENUINBIOTECH.COM
FAX: +1-540-855-7041

WWW.GENUINBIOTECH.COM

Note: This product is for research use only.

Validation Data



RAPGEF3-Alexa Fluor® 647

Flow cytometric analysis of RAPGEF3 expression in C2C12 cells using anti-RAPGEF3 antibody (Cat#3324, 1:2,000). Green, isotype control; red, RAPGEF3.

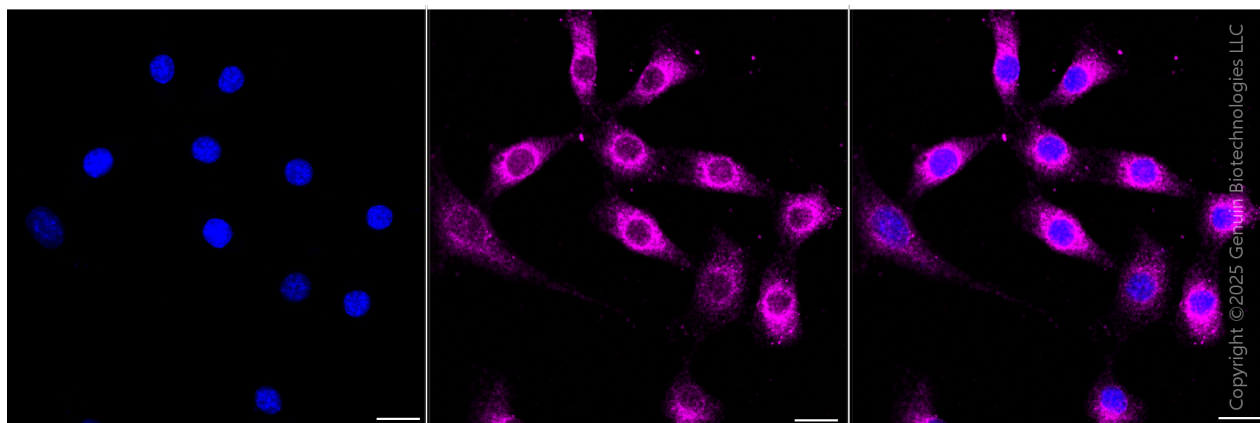
SUPPORT

SUPPORT@GENUINBIOTECH.COM
TEL: +1-540-855-7041

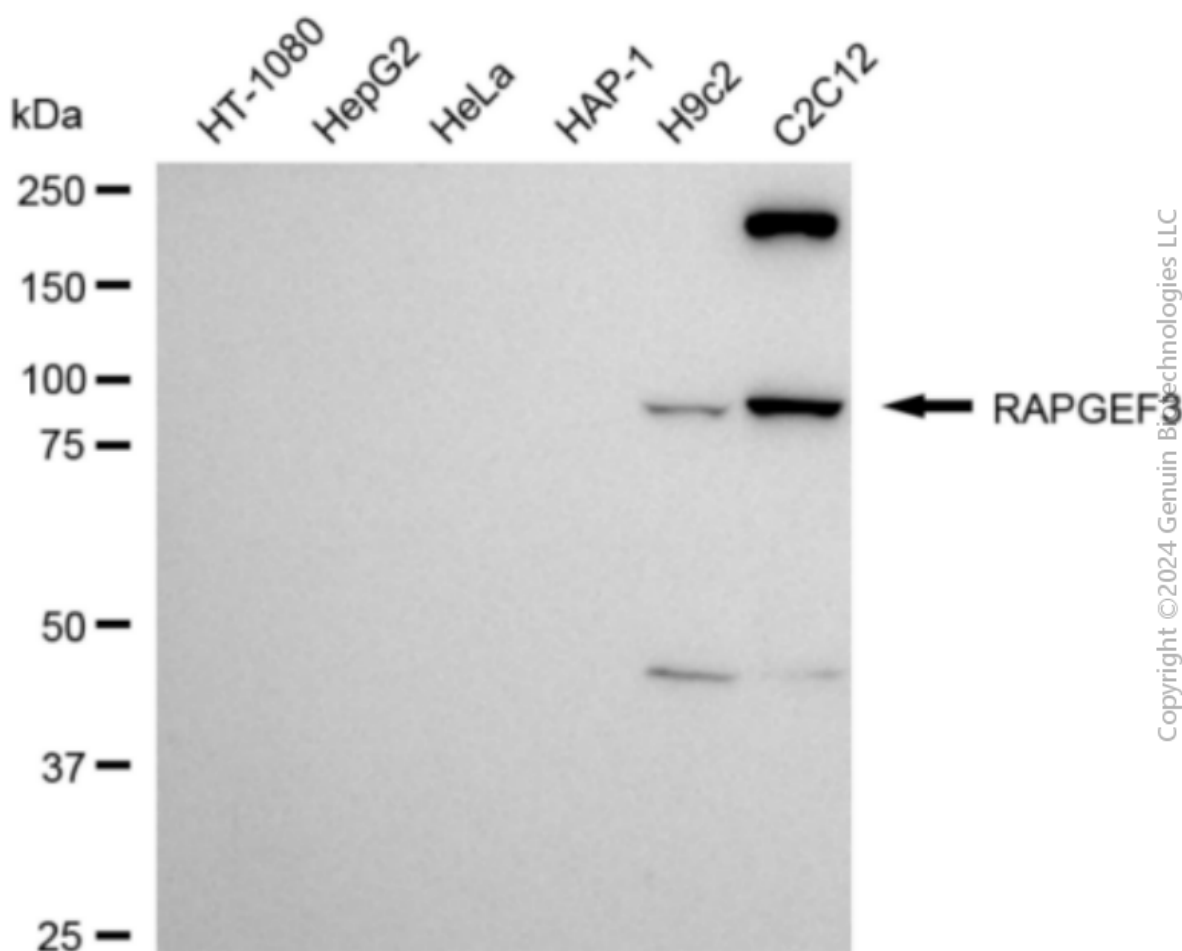
ORDERS

SALES@GENUINBIOTECH.COM
FAX: +1-540-855-7041

WWW.GENUINBIOTECH.COM



Immunocytochemical staining of C2C12 cells with anti-RAPGEF3 antibody (Cat#3324, 1:1,000) . Nuclei were stained blue with DAPI; RAPGEF3 was stained magenta with Alexa Fluor® 647. Images were taken using Leica stellaris 5. Protein abundance based on laser Intensity and Smart Gain□Low. Scale bar, 20 μ m.



Western blotting analysis using anti-RAPGEF3 antibody (Cat#3324). Total cell lysates (30 μ g)

SUPPORT

SUPPORT@GENUINBIOTECH.COM
TEL: +1-540-855-7041

ORDERS

SALES@GENUINBIOTECH.COM
FAX: +1-540-855-7041

WWW.GENUINBIOTECH.COM

from various cell lines were loaded and separated by SDS-PAGE. The blot was incubated with anti-RAPGEF3 antibody (Cat#3324, 1:5,000) and HRP-conjugated goat anti-rabbit secondary antibody (Cat#201, 1:20,000) respectively. Image was developed using NaQ™ ECL Substrate Kit (Cat#716). RAPGEF3, rap guanine nucleotide exchange factor 3.