

Anti-Receptor Like Tyrosine Kinase Rabbit Monoclonal Antibody



Catalog #: 3328

Aliases

RYK; Receptor Like Tyrosine Kinase; D3S3195; JTK5A; RYK1; JTK5; JTK5A ProteinTyrosine Kinase; Tyrosine-Protein Kinase RYK; EC 2.7.10.1; RYK ReceptorLike Tyrosine Kinase; Hydroxyaryl-Protein Kinase; EC 2.7.10

Background

Gene Name: RYK

NCBI Gene Entry: [6259](#)

UniProt Entry: [P34925](#)

Application Information

Molecular Weight: Predicted, 68 kDa; observed, 72 kDa

Clonality: Rabbit monoclonal antibody

Clone ID: 24GB5080

Species Reactivity: Human, mouse

Applications Tested: Western blotting (WB), immunocytochemistry (IC), flow cytometry (FCM)

Immunogen

A synthesized peptide derived from human RYK

Isotype

Rabbit IgG

Storage Buffer

Supplied in PBS (pH 7.4) containing 50% glycerol, and 0.02% sodium azide.

Storage

Store at -20 °C for one year.

Recommended Dilutions

Western Blotting (WB): 1:1,000-1:5,000

Immunocytochemistry (IC): 1:100-1:1,000

Flow Cytometry (FCM): 1:2,000

Note: This product is for research use only.

SUPPORT

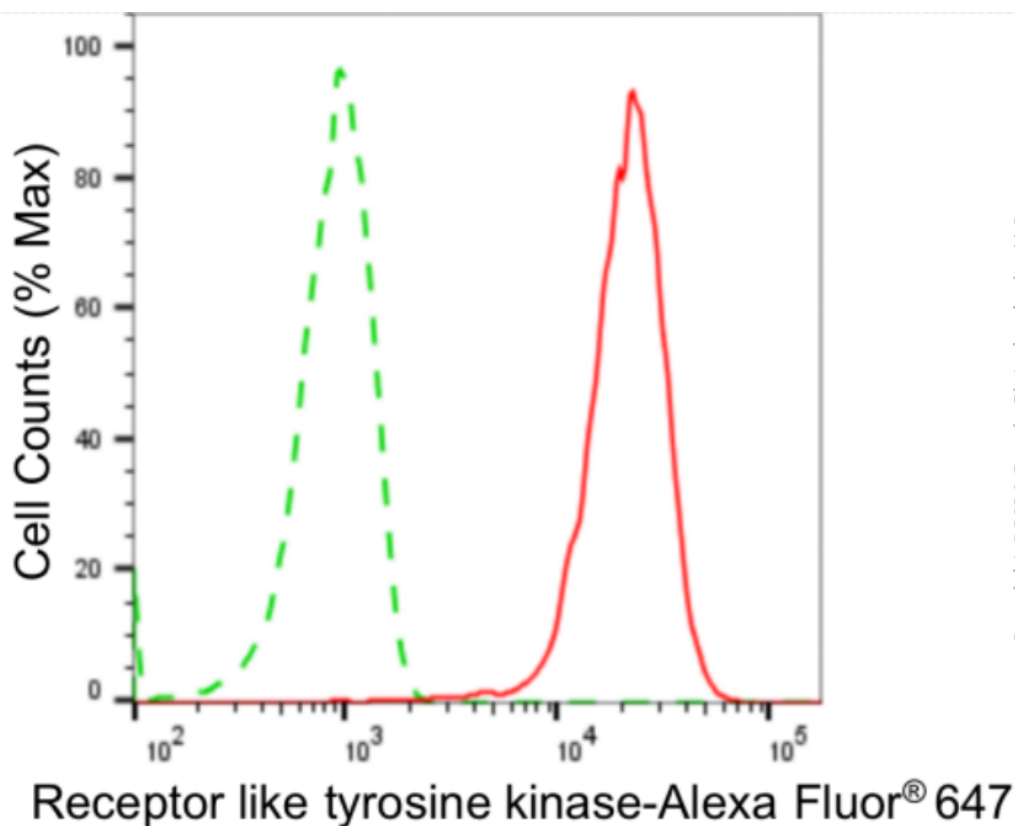
SUPPORT@GENUINBIOTECH.COM
TEL: +1-540-855-7041

ORDERS

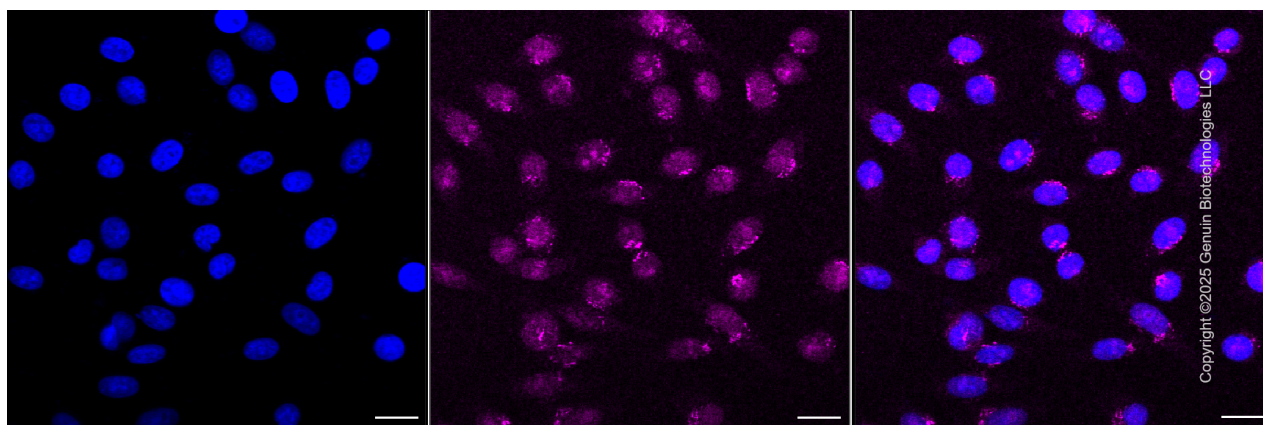
SALES@GENUINBIOTECH.COM
FAX: +1-540-855-7041

WWW.GENUINBIOTECH.COM

Validation Data



Flow cytometric analysis of Receptor like tyrosine kinase expression in HepG2 cells using anti-Receptor like tyrosine kinase antibody (Cat#3328, 1:2,000). Green, isotype control; red, Receptor like tyrosine kinase.



Immunocytochemical staining of HepG2 cells with anti-receptor like tyrosine kinase antibody (Cat#3328, 1:1,000). Nuclei were stained blue with DAPI; Receptor like tyrosine kinase was stained magenta with Alexa Fluor® 647. Images were taken using Leica stellaris 5. Protein abundance based on laser Intensity and smart gain: Medium. Scale bar: 20 μ m.

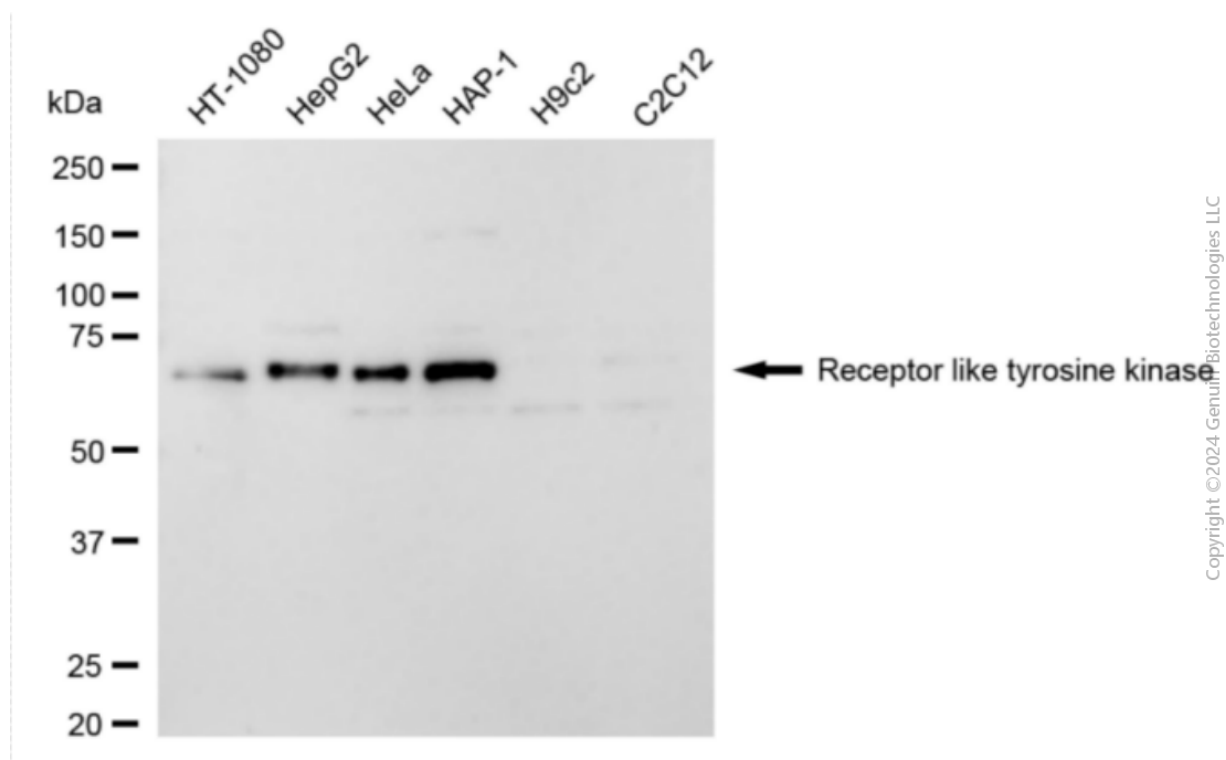
SUPPORT

SUPPORT@GENUINBIOTECH.COM
TEL: +1-540-855-7041

ORDERS

SALES@GENUINBIOTECH.COM
FAX: +1-540-855-7041

WWW.GENUINBIOTECH.COM



Western blotting analysis using anti-receptor like tyrosine kinase antibody (Cat#3328). Total cell lysates (30 μ g) from various cell lines were loaded and separated by SDS-PAGE. The blot was incubated with anti-receptor like tyrosine kinase antibody (Cat#3328, 1:5,000) and HRP-conjugated goat anti-rabbit secondary antibody (Cat#201, 1:20,000) respectively. Image was developed using NaQ™ ECL Substrate Kit (Cat#716).