

Anti-Splicing Factor 3b Subunit 3 Rabbit Monoclonal Antibody



Catalog #: 3329

Aliases

SF3B3; Splicing Factor 3b Subunit 3; SAP130; Spliceosome-Associated Protein 130; KIAA0017; SF3b130; RSE1; Splicing Factor 3B Subunit 3; STAF130; SAP 130; Pre-mRNA Splicing Factor SF3b, 130 KDa Subunit; Pre-mRNA-Splicing Factor SF3b 130 KDa Subunit; Splicing Factor 3b, Subunit 3, 130kDa; Splicing Factor 3b, Subunit 3, 130kD; SF3B130

Background

Gene Name: SF3B3

NCBI Gene Entry: [23450](#)

UniProt Entry: [Q15393](#)

Application Information

Molecular Weight: Predicted, 136 kDa; observed, 136 kDa

Clonality: Rabbit monoclonal antibody

Clone ID: 24GB5085

Species Reactivity: Human, mouse, rat

Applications Tested: Western blotting (WB), flow cytometry (FCM), immunocytochemistry (IC)

Immunogen

A synthesized peptide derived from human SF3B3

Isotype

Rabbit IgG

Storage Buffer

Supplied in PBS (pH 7.4) containing 50% glycerol, and 0.02% sodium azide.

Storage

Store at -20 °C for one year.

Recommended Dilutions

Western Blotting (WB): 1:1,000-1:5,000

Flow Cytometry (FCM): 1:2,000

Immunocytochemistry (IC): 1:100-1:1,000

SUPPORT

SUPPORT@GENUINBIOTECH.COM
TEL: +1-540-855-7041

ORDERS

SALES@GENUINBIOTECH.COM
FAX: +1-540-855-7041

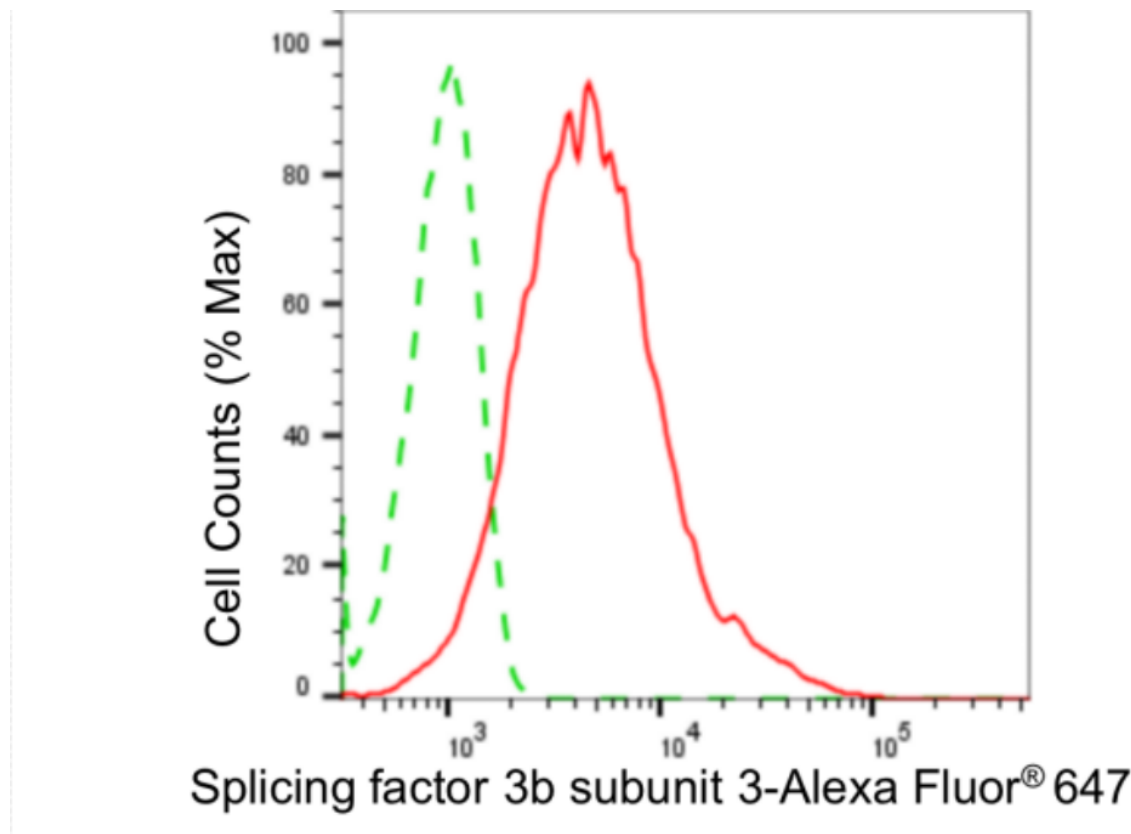
WWW.GENUINBIOTECH.COM

Anti-Splicing Factor 3b Subunit 3 Rabbit Monoclonal Antibody

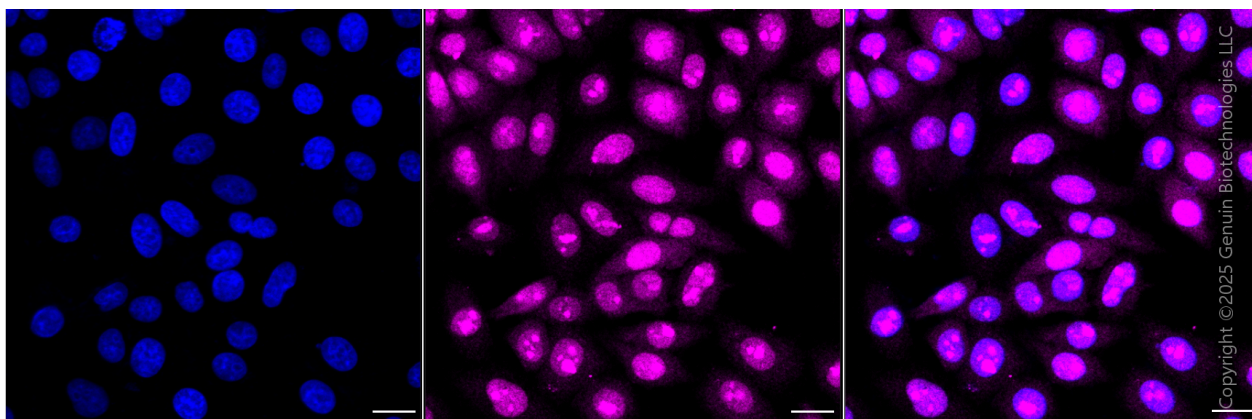
PAGE 2

Note: This product is for research use only.

Validation Data



Flow cytometric analysis of splicing factor 3b subunit 3 expression in HepG2 cells using anti-splicing factor 3b subunit 3 antibody (Cat#3329, 1:2,000). Green, isotype control; red, splicing factor 3b subunit 3.



Immunocytochemical staining of HepG2 cells with anti-Splicing factor 3b subunit 3 antibody (Cat#3329, 1:1,000). Nuclei were stained blue with DAPI; Splicing factor 3b subunit 3 was stained magenta with Alexa Fluor® 647. Images were taken using Leica stellaris 5. Protein abundance based on laser Intensity and smart gain: Medium. Scale bar, 20 µm.

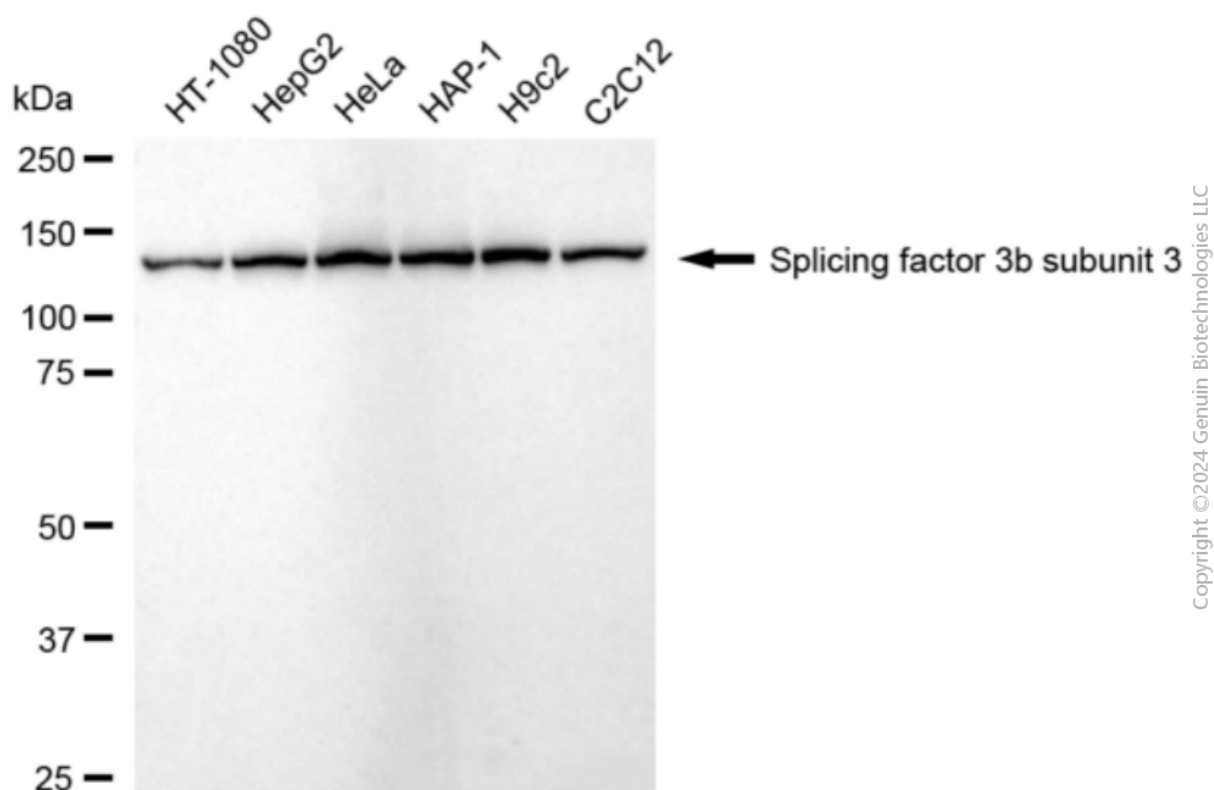
SUPPORT

SUPPORT@GENUINBIOTECH.COM
TEL: +1-540-855-7041

ORDERS

SALES@GENUINBIOTECH.COM
FAX: +1-540-855-7041

WWW.GENUINBIOTECH.COM



Western blotting analysis using anti-splicing factor 3b subunit 3 antibody (Cat#3329). Total cell lysates (30 µg) from various cell lines were loaded and separated by SDS-PAGE. The blot was incubated with anti-splicing factor 3b subunit 3 antibody (Cat#3329, 1:5,000) and HRP-conjugated goat anti-rabbit secondary antibody (Cat#201, 1:20,000) respectively. Image was developed using NaQ™ ECL Substrate Kit (Cat#716).