

Anti-Phospho-Smad1 (Ser463/Ser465) Rabbit Monoclonal Antibody



Catalog #: 3330

Aliases

SMAD1; SMAD Family Member 1; MADR1; JV4-1; MADH1; Mothers Against Decapentaplegic Homolog 1; Mothers Against DPP Homolog 1; Mad-Related Protein 1; BSP-1; BSP1; MAD, Mothers Against Decapentaplegic Homolog 1 (Drosophila); Transforming Growth Factor-Beta Signaling Protein 1; Transforming Growth Factor-Beta-Signaling Protein 1; SMAD, Mothers Against DPP Homolog 1 (Drosophila); MAD, Mothers Against Decapentaplegic Homolog 1; SMAD, Mothers Against DPP Homolog 1; TGF-Beta Signaling Protein 1; MAD Homolog 1; SMAD 1; HSMAD1; Smad1; JV41

Background

Gene Name: SMAD1

NCBI Gene Entry: [4086](#)

UniProt Entry: [Q15797](#)

Application Information

Molecular Weight: Predicted, 52 kDa; observed, 52 kDa

Clonality: Rabbit monoclonal antibody

Clone ID: 24GB5090

Species Reactivity: Human, mouse, rat

Applications Tested: Western blotting (WB), flow cytometry (FCM), immunocytochemistry (IC)

Immunogen

A synthesized peptide derived from human Phospho-Smad1 (Ser463/Ser465)

Isotype

Rabbit IgG

Storage Buffer

Supplied in PBS (pH 7.4) containing 50% glycerol, and 0.02% sodium azide.

Storage

Store at -20 °C for one year.

Recommended Dilutions

Western Blotting (WB): 1:1,000-1:5,000

Flow Cytometry (FCM): 1:2,000

SUPPORT

SUPPORT@GENUINBIOTECH.COM
TEL: +1-540-855-7041

ORDERS

SALES@GENUINBIOTECH.COM
FAX: +1-540-855-7041

WWW.GENUINBIOTECH.COM

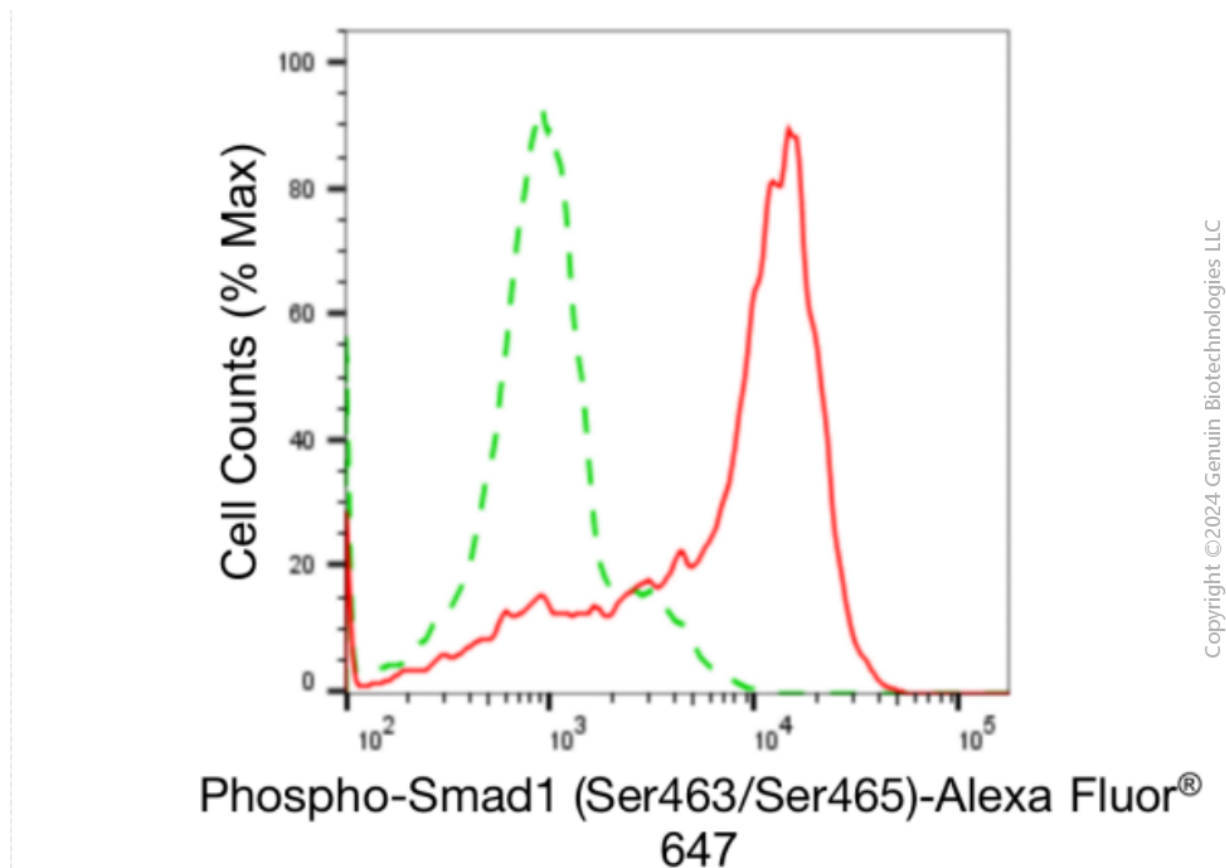
Anti-Phospho-Smad1 (Ser463/Ser465) Rabbit Monoclonal Antibody

PAGE 2

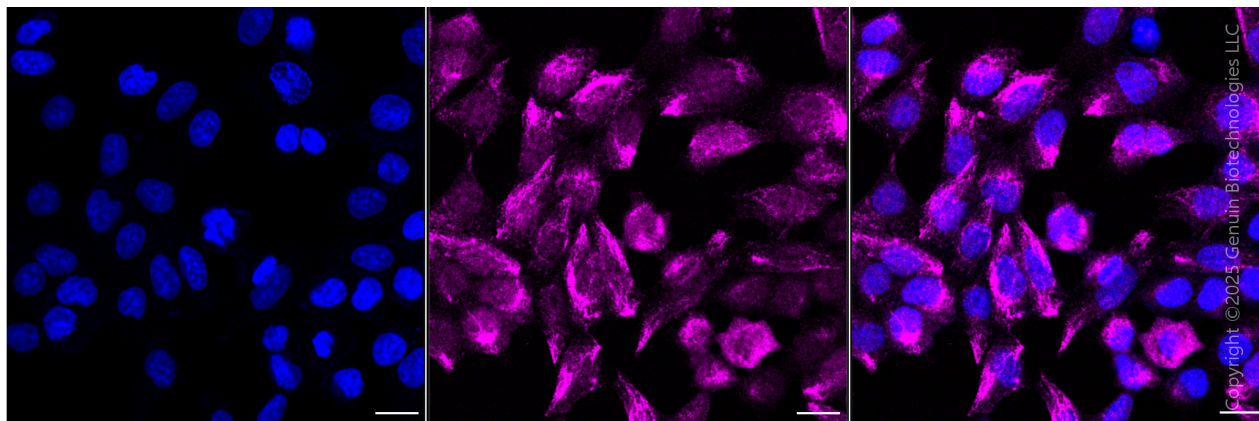
Immunocytochemistry (IC): 1:100-1:1,000

Note: This product is for research use only.

Validation Data



Flow cytometric analysis of Phospho-Smad1 (Ser463/Ser465) expression in HAP-1 cells using anti-Phospho-Smad1 (Ser463/Ser465) antibody (Cat#3330, 1:2,000). Green, isotype control; red, Phospho-Smad1 (Ser463/Ser465).



Immunocytochemical staining of HAP1 cells with anti-Phospho-Smad1 (Ser463/Ser465) antibody

SUPPORT

SUPPORT@GENUINBIOTECH.COM
TEL: +1-540-855-7041

ORDERS

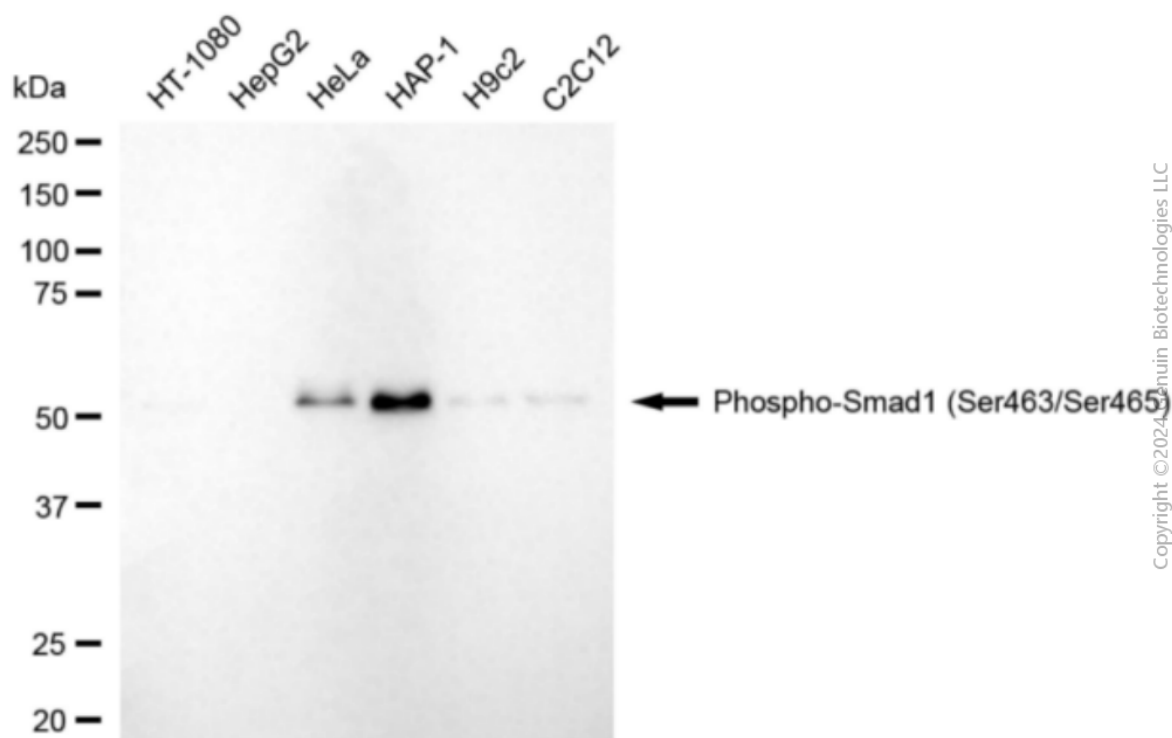
SALES@GENUINBIOTECH.COM
FAX: +1-540-855-7041

WWW.GENUINBIOTECH.COM

Anti-Phospho-Smad1 (Ser463/Ser465) Rabbit Monoclonal Antibody

PAGE 3

(Cat#3330, 1:1,000) . Nuclei were stained blue with DAPI; Phospho-Smad1 (Ser463/Ser465) was stained magenta with Alexa Fluor® 647. Images were taken using Leica stellaris 5. Protein abundance based on laser Intensity and smart gain: Medium. Scale bar, 20 μ m.



Western blotting analysis using anti-phospho-smad1 (Ser463/Ser465) antibody (Cat#3330). Total cell lysates (30 μ g) from various cell lines were loaded and separated by SDS-PAGE. The blot was incubated with anti-phospho-smad1 (Ser463/Ser465) antibody (Cat#3330, 1:5,000) and HRP-conjugated goat anti-rabbit secondary antibody (Cat#201, 1:20,000) respectively. Image was developed using NaQ™ ECL Substrate Kit (Cat#716).

SUPPORT

SUPPORT@GENUINBIOTECH.COM
TEL: +1-540-855-7041

ORDERS

SALES@GENUINBIOTECH.COM
FAX: +1-540-855-7041

WWW.GENUINBIOTECH.COM