

# Anti-Transcription Elongation Factor A1 Rabbit Monoclonal Antibody



**Catalog #: 3333**

## Aliases

TCEA1; Transcription Elongation Factor A1; TFIIS; GTF2S; TF2S; SII; Transcription Elongation Factor S-II Protein 1; Transcription Elongation Factor A Protein 1; Transcription Elongation Factor A (SII), 1; Transcription Elongation Factor TFIIS.O; Transcription Factor IIS; TCEA; Epididymis Secretory Sperm Binding Protein

## Background

Gene Name: TCEA1

NCBI Gene Entry: [6917](#)

UniProt Entry: [P23193](#)

## Application Information

Molecular Weight: Predicted, 34 kDa; observed, 34 kDa

Clonality: Rabbit monoclonal antibody

Clone ID: 24GB5105

Species Reactivity: Human, mouse, rat

Applications Tested: Western blotting (WB), immunocytochemistry (IC), flow cytometry (FCM)

## Immunogen

A synthesized peptide derived from human TCEA1

## Isotype

Rabbit IgG

## Storage Buffer

Supplied in PBS (pH 7.4) containing 50% glycerol, and 0.02% sodium azide.

## Storage

Store at -20 °C for one year.

## Recommended Dilutions

Western Blotting (WB): 1:1,000-1:5,000

Immunocytochemistry (IC): 1:100-1:1,000

Flow Cytometry (FCM): 1:2,000

---

### SUPPORT

SUPPORT@GENUINBIOTECH.COM  
TEL: +1-540-855-7041

### ORDERS

SALES@GENUINBIOTECH.COM  
FAX: +1-540-855-7041

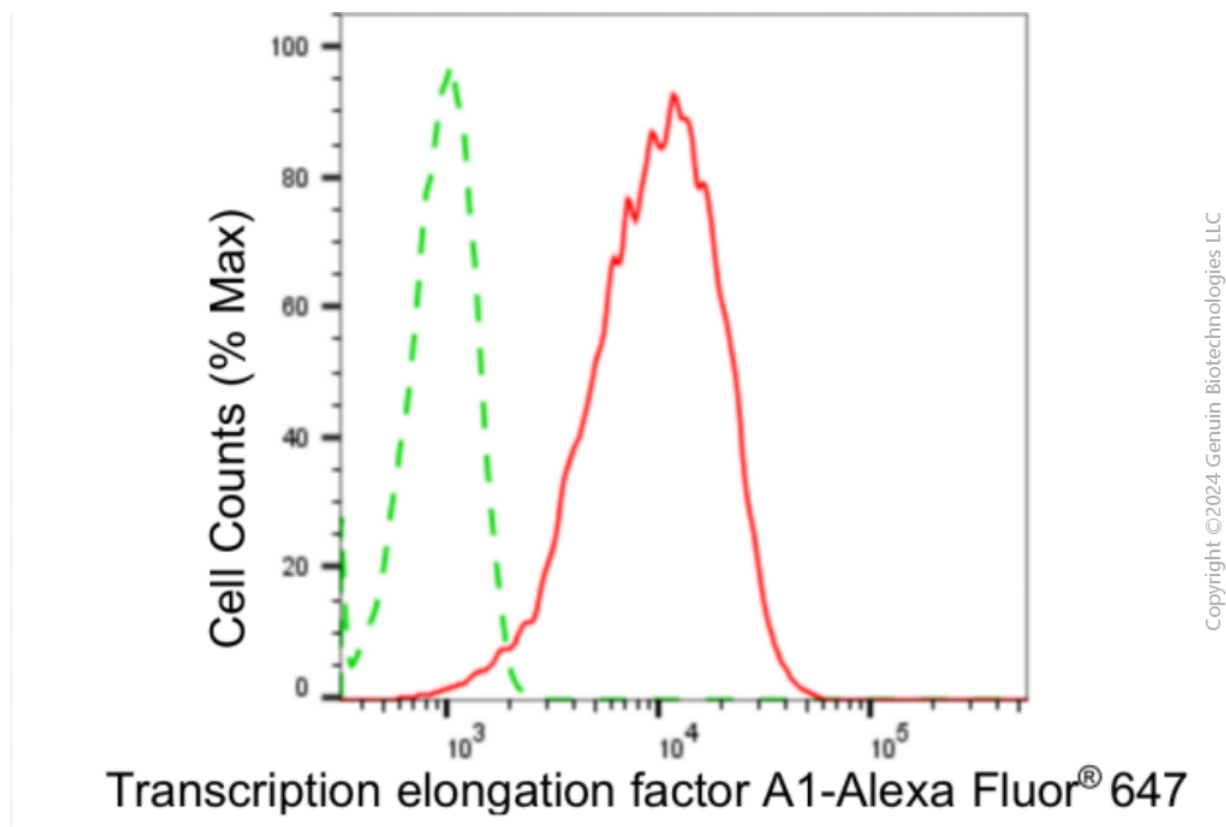
[WWW.GENUINBIOTECH.COM](http://WWW.GENUINBIOTECH.COM)

# Anti-Transcription Elongation Factor A1 Rabbit Monoclonal Antibody

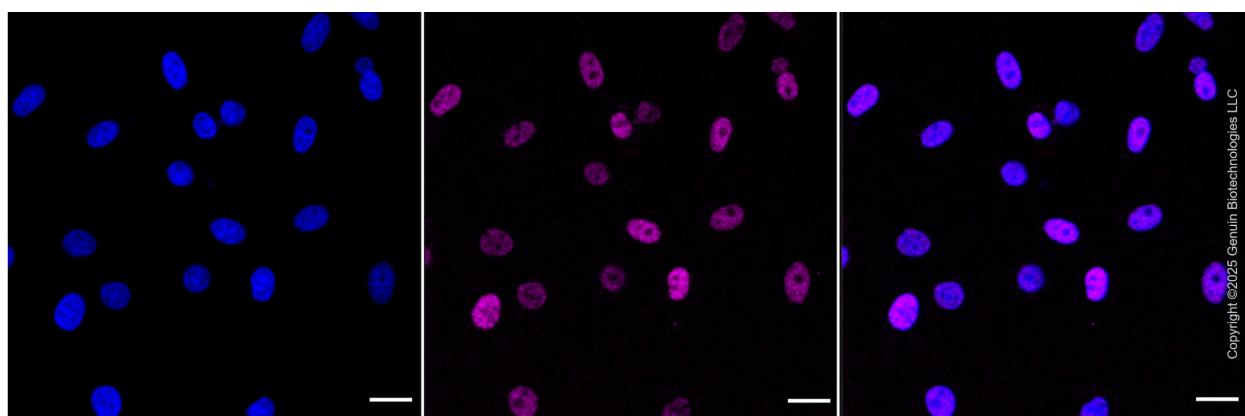
PAGE 2

**Note:** This product is for research use only.

## Validation Data



Flow cytometric analysis of transcription elongation factor A1 expression in HepG2 cells using anti-transcription elongation factor A1 antibody (Cat#3333, 1:2,000). Green, isotype control; red, transcription elongation factor A1.



Immunocytochemical staining of HepG2 cells with anti-Transcription elongation factor A1 antibody (Cat#3333, 1:1,000). Nuclei were stained blue with DAPI; Transcription elongation factor A1 was stained magenta with Alexa Fluor® 647. Images were taken using Leica stellaris 5. Protein abundance based on laser Intensity and smart gain: Medium. Scale bar: 20  $\mu$ m.

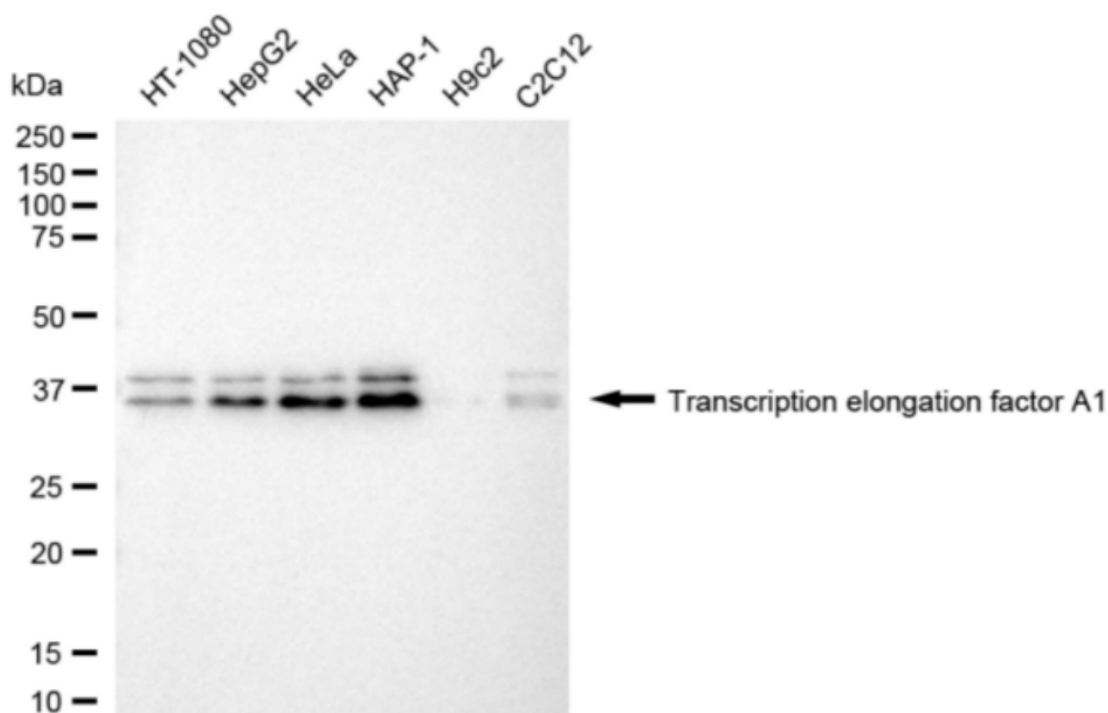
### SUPPORT

SUPPORT@GENUINBIOTECH.COM  
TEL: +1-540-855-7041

### ORDERS

SALES@GENUINBIOTECH.COM  
FAX: +1-540-855-7041

WWW.GENUINBIOTECH.COM



Western blotting analysis using anti-transcription elongation factor A1 antibody (Cat#3333). Total cell lysates (30 µg) from various cell lines were loaded and separated by SDS-PAGE. The blot was incubated with anti-transcription elongation factor A1 antibody (Cat#3333, 1:5,000) and HRP-conjugated goat anti-rabbit secondary antibody (Cat#201, 1:20,000) respectively. Image was developed using NaQ™ ECL Substrate Kit (Cat#716).