

# Anti-RCHY1 Recombinant Rabbit Monoclonal Antibody



**Catalog #: 3334**

## Aliases

RCHY1; Ring Finger And CHY Zinc Finger Domain Containing 1; RNF199; ZNF363; CHIMP; ARNIP; PIRH2; PRO1996; ZCHY; RING Finger And CHY Zinc Finger Domain-Containing Protein 1; Androgen-Receptor N-Terminal-Interacting Protein; P53-Induced Protein With A RING-H2 Domain; RING-Type E3 Ubiquitin Transferase RCHY1; E3 Ubiquitin-Protein Ligase Pirh2; RING Finger Protein 199; Zinc Finger Protein 363; Zinc Finger, CHY-Type; DKFZp586C1620; Ring Finger And CHY Zinc Finger Domain Containing 1, E3 Ubiquitin Protein Ligase; Androgen Receptor N-Terminal-Interacting Protein; CH-Rich Interacting Match With PLAG1; CH-Rich-Interacting Match With PLAG1; P53-Induced RING-H2 Protein; EC 2.3.2.27; HPirh2

## Background

Gene Name: RCHY1

NCBI Gene Entry: [25898](#)

UniProt Entry: [Q96PM5](#)

## Application Information

Molecular Weight: Predicted, 30 kDa; observed, 26 kDa

Clonality: Rabbit monoclonal antibody

Clone ID: 24GB5165

Species Reactivity: Human

Applications Tested: Western blotting (WB), flow cytometry (FCM), immunocytochemistry (IC)

## Immunogen

A synthesized peptide derived from human RCHY1

## Isotype

Rabbit IgG

## Storage Buffer

Supplied in PBS (pH 7.4) containing 50% glycerol, and 0.02% sodium azide.

## Storage

Store at -20 °C for one year.

## Recommended Dilutions

---

### SUPPORT

SUPPORT@GENUINBIOTECH.COM  
TEL: +1-540-855-7041

### ORDERS

SALES@GENUINBIOTECH.COM  
FAX: +1-540-855-7041

[WWW.GENUINBIOTECH.COM](http://WWW.GENUINBIOTECH.COM)

# Anti-RCHY1 Recombinant Rabbit Monoclonal Antibody

PAGE 2

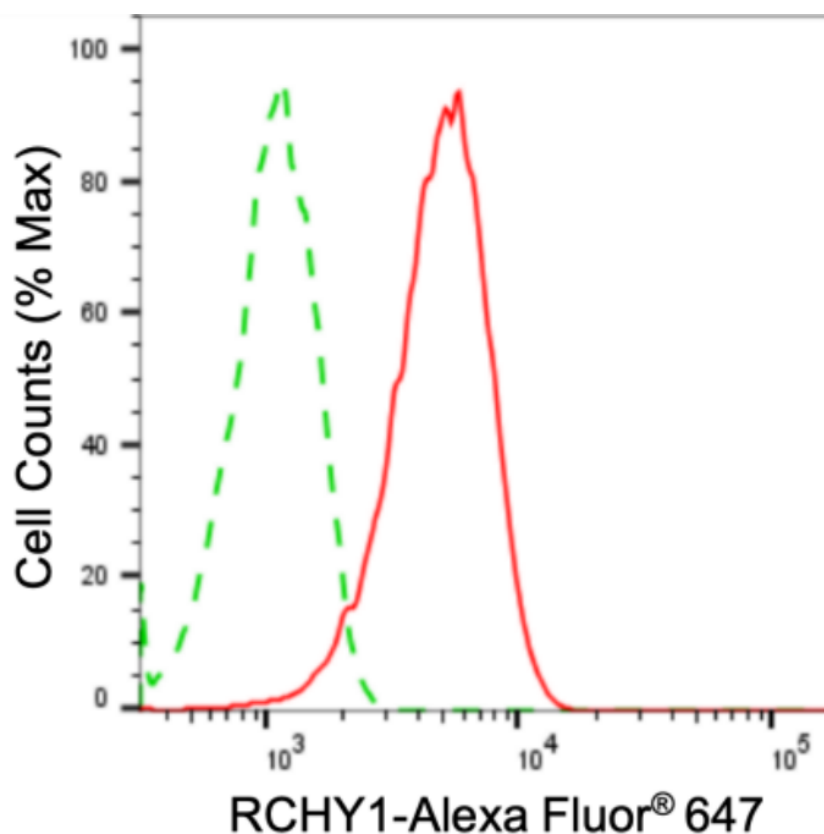
Western Blotting (WB): 1:1,000-1:5,000

Flow Cytometry (FCM): 1:2,000

Immunocytochemistry (IC): 1:100-1:1,000

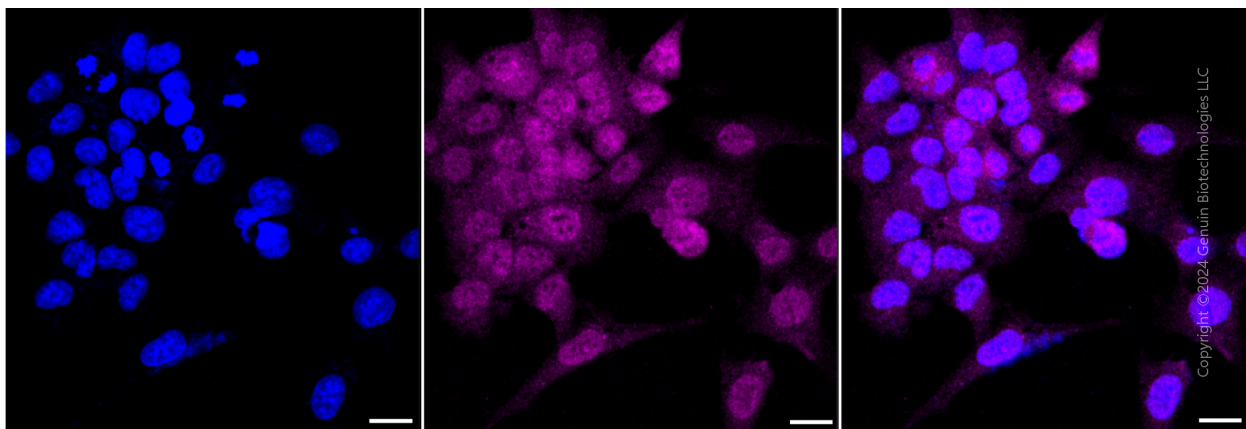
**Note:** This product is for research use only.

## Validation Data



Copyright ©2024 Genuin Biotechnologies LLC

Flow cytometric analysis of RCHY1 expression in HAP-1 cells using anti-RCHY1 antibody (Cat#3334, 1:2,000). Green, isotype control; red, RCHY1.



Copyright ©2024 Genuin Biotechnologies LLC

### SUPPORT

SUPPORT@GENUINBIOTECH.COM  
TEL: +1-540-855-7041

### ORDERS

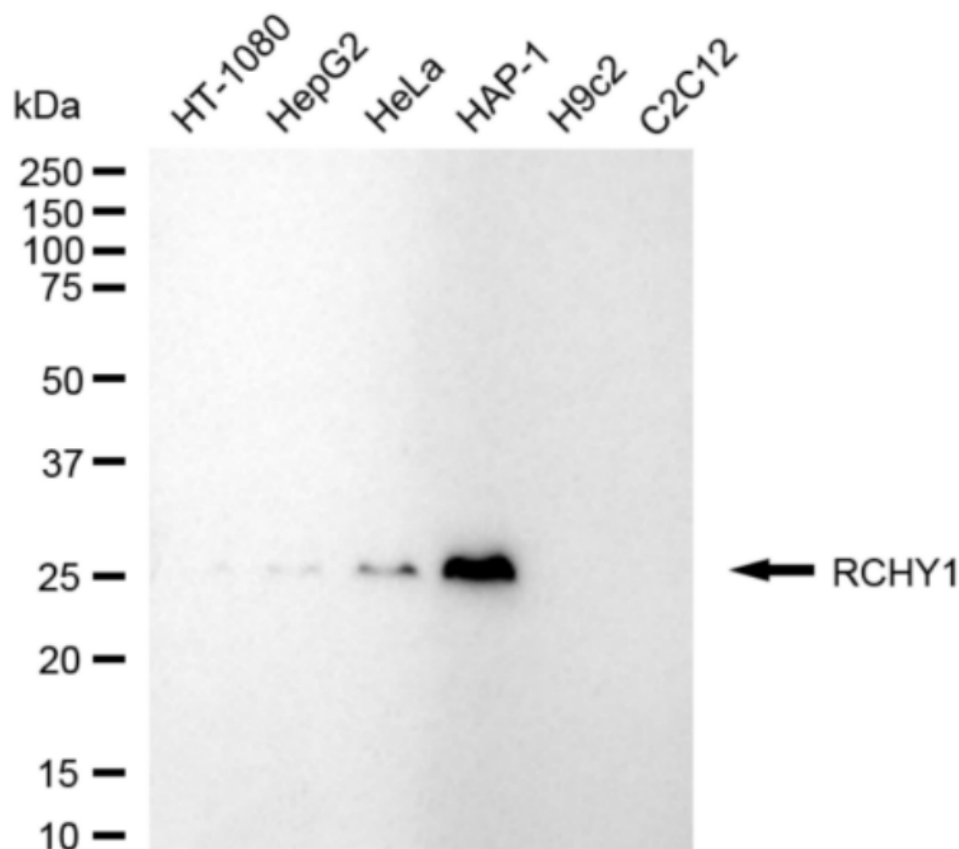
SALES@GENUINBIOTECH.COM  
FAX: +1-540-855-7041

WWW.GENUINBIOTECH.COM

## Anti-RCHY1 Recombinant Rabbit Monoclonal Antibody

PAGE 3

Immunocytochemical staining of HAP-1 with anti-RCHY1 antibody (Cat#3334, 1:1,000) . Nuclei were stained blue with DAPI; RCHY1 was stained magenta with Alexa Fluor® 647. Images were taken using Leica stellaris 5. Protein abundance based on laser Intensity and smart gain: Medium. Scale bar: 20  $\mu$ m.



Copyright ©2024 Genuin Biotechnologies LLC

Western blotting analysis using anti-RCHY1 antibody (Cat#3334). Total cell lysates (30  $\mu$ g) from various cell lines were loaded and separated by SDS-PAGE. The blot was incubated with anti-RCHY1 antibody (Cat#3334, 1:5,000) and HRP-conjugated goat anti-rabbit secondary antibody (Cat#201, 1:20,000) respectively. Image was developed using NaQ™ ECL Substrate Kit (Cat#716).

### SUPPORT

SUPPORT@GENUINBIOTECH.COM  
TEL: +1-540-855-7041

### ORDERS

SALES@GENUINBIOTECH.COM  
FAX: +1-540-855-7041

WWW.GENUINBIOTECH.COM