

# Anti-Phospho-MCM2 (S27) Recombinant Rabbit Monoclonal Antibody



**Catalog #: 3337**

## Aliases

MCM2; Minichromosome Maintenance Complex Component 2; BM28; KIAA0030; D3S3194; DFNA70; Cdc19; CCNL1; CDCL1; Minichromosome Maintenance Protein 2 Homolog; DNA Replication Licensing Factor MCM2; Nuclear Protein BM28; Mitotin; MCM2 Minichromosome Maintenance Deficient 2, Mitotin (S. Cerevisiae); Minichromosome Maintenance Deficient (S. Cerevisiae) 2 (Mitotin); Minichromosome Maintenance Deficient 2 (Mitotin); Cell Devision Cycle-Like 1; Cyclin-Like 1; EC 3.6.4.12

## Background

Gene Name: MCM2

NCBI Gene Entry: [4171](#)

UniProt Entry: [P49736](#)

## Application Information

Molecular Weight: Predicted, 102 kDa; observed, 125 kDa

Clonality: Rabbit monoclonal antibody

Clone ID: 24GB5180

Species Reactivity: Human, mouse, rat

Applications Tested: Western blotting (WB), immunocytochemistry (IC), flow cytometry (FCM)

## Immunogen

A synthesized peptide derived from human Phospho-MCM2 (S27)

## Isotype

Rabbit IgG

## Storage Buffer

Supplied in PBS (pH 7.4) containing 50% glycerol, and 0.02% sodium azide.

## Storage

Store at -20 °C for one year.

## Recommended Dilutions

Western Blotting (WB): 1:1,000-1:5,000

Immunocytochemistry (IC): 1:100-1:1,000

Flow Cytometry (FCM): 1:2,000

---

### SUPPORT

SUPPORT@GENUINBIOTECH.COM  
TEL: +1-540-855-7041

### ORDERS

SALES@GENUINBIOTECH.COM  
FAX: +1-540-855-7041

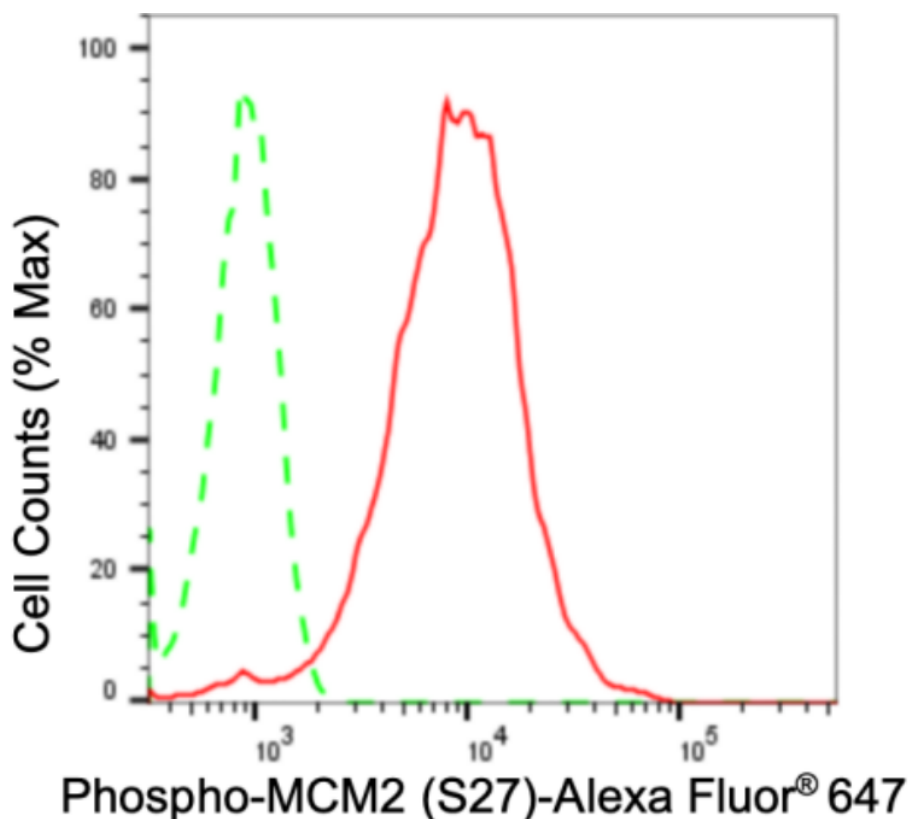
[WWW.GENUINBIOTECH.COM](http://WWW.GENUINBIOTECH.COM)

# Anti-Phospho-MCM2 (S27) Recombinant Rabbit Monoclonal Antibody

PAGE 2

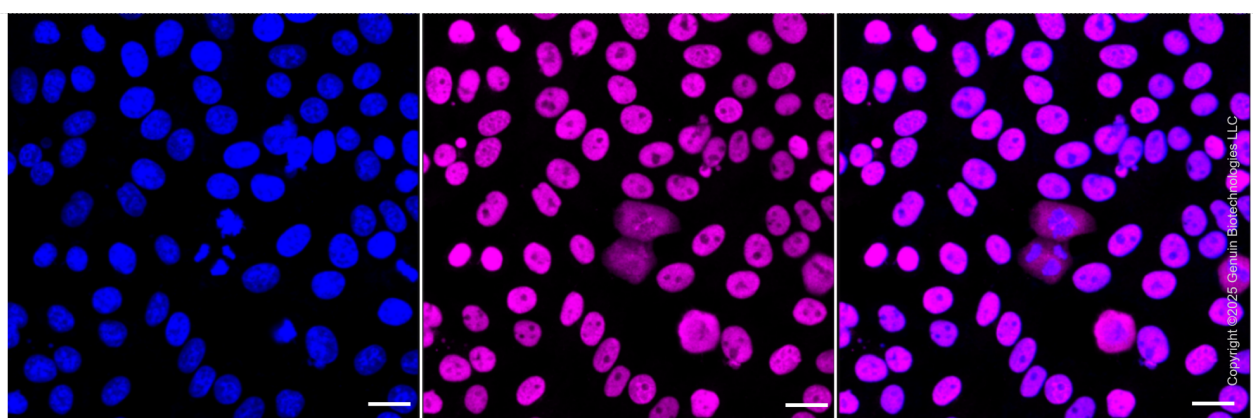
**Note:** This product is for research use only.

## Validation Data



Copyright ©2024 Genuin Biotechnologies LLC

Flow cytometric analysis of phospho-MCM2 (S27) expression in HepG2 cells using anti-phospho-MCM2 (S27) antibody (Cat#3337, 1:2,000). Green, isotype control; red, phospho-MCM2 (S27).



Immunocytochemical staining of HepG2 cells with anti-Phospho-MCM2 (S27) antibody (Cat#3337, 1:1,000). Nuclei were stained blue with DAPI; Phospho-MCM2 (S27) was stained magenta with Alexa Fluor® 647. Images were taken using Leica stellaris 5. Protein abundance based on laser Intensity and smart gain: High. Scale bar: 20  $\mu$ m.

### SUPPORT

SUPPORT@GENUINBIOTECH.COM  
TEL: +1-540-855-7041

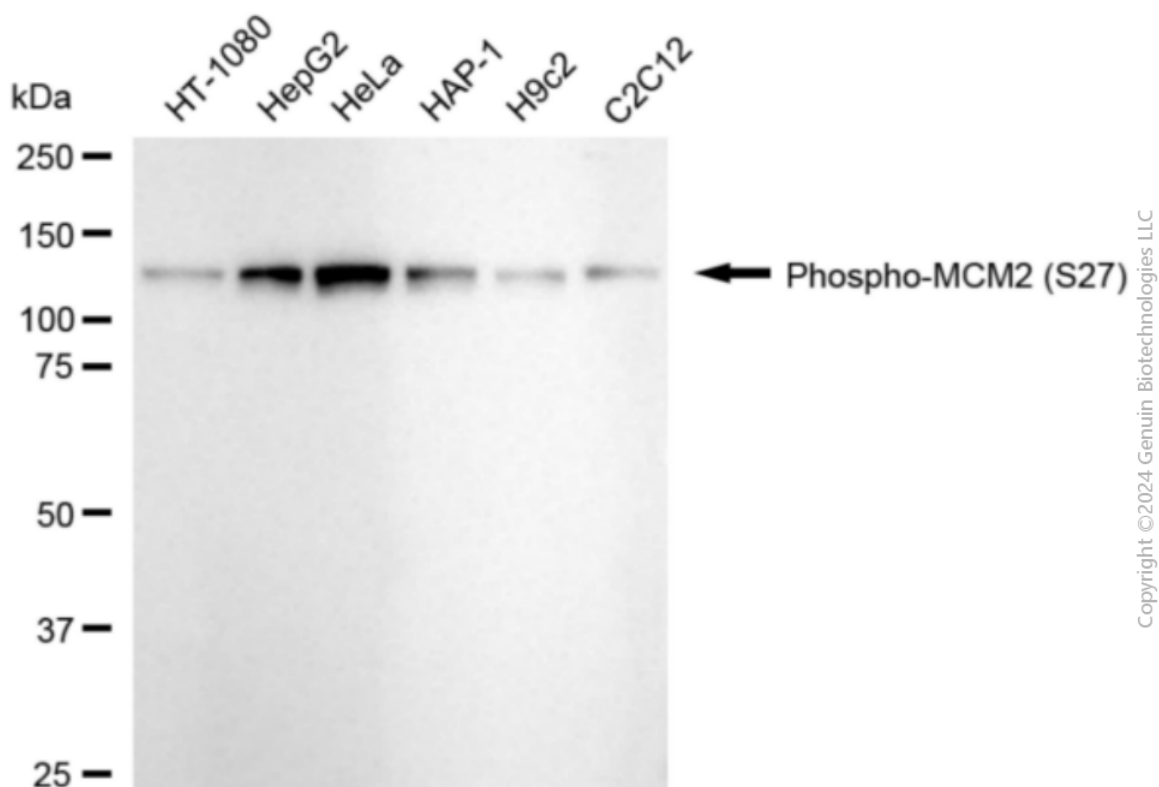
### ORDERS

SALES@GENUINBIOTECH.COM  
FAX: +1-540-855-7041

WWW.GENUINBIOTECH.COM

## Anti-Phospho-MCM2 (S27) Recombinant Rabbit Monoclonal Antibody

PAGE 3



Western blotting analysis using anti-phospho-MCM2 (S27) antibody (Cat#3337). Total cell lysates (30 µg) from various cell lines were loaded and separated by SDS-PAGE. The blot was incubated with anti-phospho-MCM2 (S27) antibody (Cat#3337, 1:5,000) and HRP-conjugated goat anti-rabbit secondary antibody (Cat#201, 1:20,000) respectively. Image was developed using NaQ™ ECL Substrate Kit (Cat#716).

### SUPPORT

SUPPORT@GENUINBIOTECH.COM  
TEL: +1-540-855-7041

### ORDERS

SALES@GENUINBIOTECH.COM  
FAX: +1-540-855-7041

[WWW.GENUINBIOTECH.COM](http://WWW.GENUINBIOTECH.COM)