

Catalog #: 3343

Aliases

PIK3R2; Phosphoinositide-3-Kinase Regulatory Subunit 2; P85-BETA; P85beta; P85B; P85; Phosphatidylinositol 3-Kinase 85 KDa Regulatory Subunit Beta; Phosphoinositide-3-Kinase, Regulatory Subunit 2 (Beta); Phosphatidylinositol 3-Kinase Regulatory Subunit Beta; Phosphoinositide-3-Kinase Regulatory Subunit Beta; PtdIns-3-Kinase Regulatory Subunit P85-Beta; PI3K Regulatory Subunit Beta; PI3-Kinase Subunit P85-Beta; Phosphatidylinositol 3-Kinase, Regulatory Subunit, Polypeptide 2 (P85 Beta); PtdIns-3-Kinase Regulatory Subunit Beta; PI3-Kinase Regulatory Subunit Beta; MPPH1; MPPH

Background

Gene Name: PIK3R2

NCBI Gene Entry: [5296](#)

UniProt Entry: [O00459](#)

Application Information

Molecular Weight: Predicted, 82 kDa; observed, 82 kDa

Clonality: Rabbit monoclonal antibody

Clone ID: 24GB5210

Species Reactivity: Human, mouse, rat

Applications Tested: Western blotting (WB), flow cytometry (FCM), immunocytochemistry (IC)

Immunogen

A synthesized peptide derived from human PI 3 Kinase p85 beta

Isotype

Rabbit IgG

Storage Buffer

Supplied in PBS (pH 7.4) containing 50% glycerol, and 0.02% sodium azide.

Storage

Store at -20 °C for one year.

Recommended Dilutions

Western Blotting (WB): 1:1,000-1:5,000

Flow Cytometry (FCM): 1:2,000

SUPPORT

SUPPORT@GENUINBIOTECH.COM
TEL: +1-540-855-7041

ORDERS

SALES@GENUINBIOTECH.COM
FAX: +1-540-855-7041

WWW.GENUINBIOTECH.COM

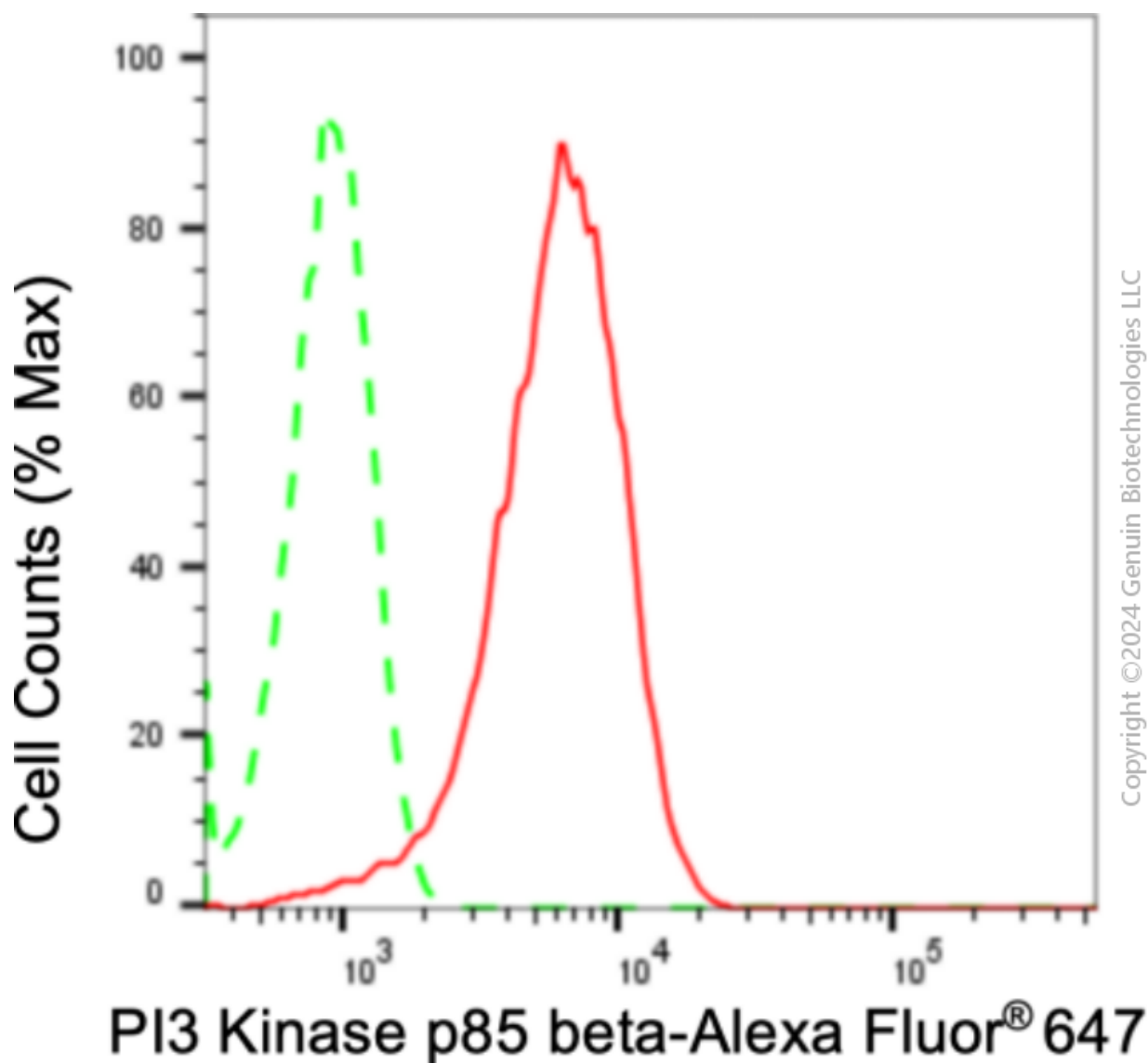
Anti-PIK3R2 Recombinant Rabbit Monoclonal Antibody

PAGE 2

Immunocytochemistry (IC): 1:100-1:1,000

Note: This product is for research use only.

Validation Data



Flow cytometric analysis of PI3 Kinase p85 beta expression in HepG2 cells using anti-PI3 Kinase p85 beta antibody (Cat#3343, 1:2,000). Green, isotype control; red, PI3 Kinase p85 beta.

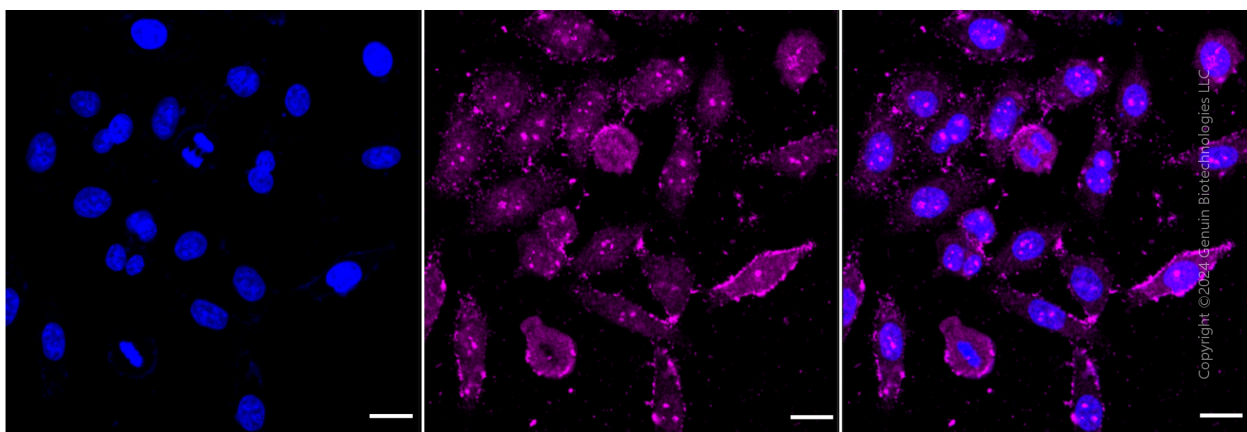
SUPPORT

SUPPORT@GENUINBIOTECH.COM
TEL: +1-540-855-7041

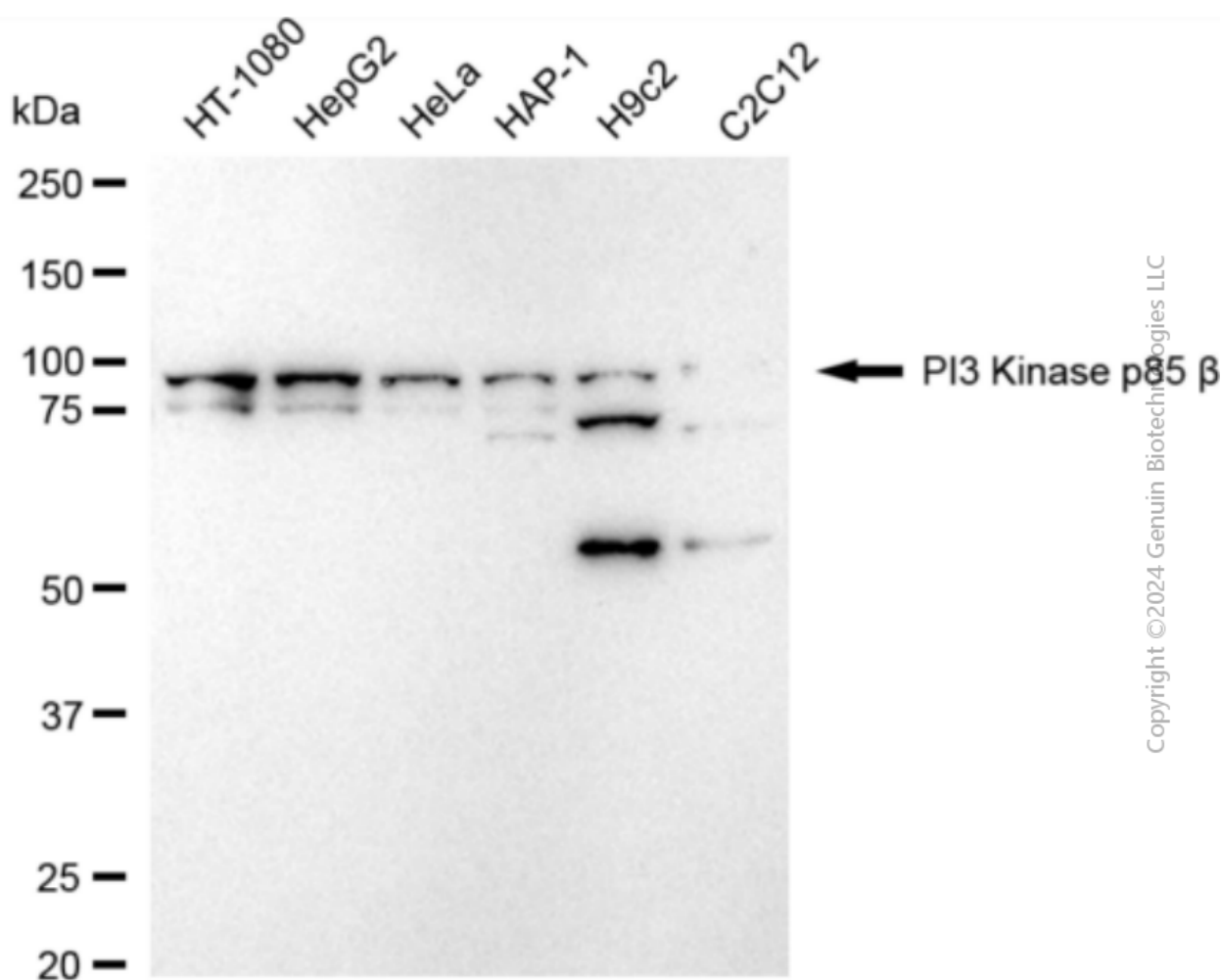
ORDERS

SALES@GENUINBIOTECH.COM
FAX: +1-540-855-7041

WWW.GENUINBIOTECH.COM



Immunocytochemical staining of HepG2 cells with anti-PI3 Kinase p85 beta antibody (Cat#3343, 1:1,000) . Nuclei were stained blue with DAPI; PI3 Kinase p85 beta was stained magenta with Alexa Fluor® 647. Images were taken using Leica stellaris 5. Protein abundance based on laser Intensity and smart gain: Medium. Scale bar: 20 µm.



Western blotting analysis using anti-PI3 Kinase p85 beta antibody (Cat#3343). Total cell lysates (30 µg) from various cell lines were loaded and separated by SDS-PAGE. The blot was incubated

SUPPORT

SUPPORT@GENUINBIOTECH.COM
TEL: +1-540-855-7041

ORDERS

SALES@GENUINBIOTECH.COM
FAX: +1-540-855-7041

WWW.GENUINBIOTECH.COM

Anti-PIK3R2 Recombinant Rabbit Monoclonal Antibody

PAGE 4

with anti-PI3 Kinase p85 beta antibody (Cat#3343, 1:5,000) and HRP-conjugated goat anti-rabbit secondary antibody (Cat#201, 1:20,000) respectively. Image was developed using NaQ™ ECL Substrate Kit (Cat#716).

SUPPORT

SUPPORT@GENUINBIOTECH.COM
TEL: +1-540-855-7041

ORDERS

SALES@GENUINBIOTECH.COM
FAX: +1-540-855-7041

WWW.GENUINBIOTECH.COM