

Anti-Phospho-IRE1 (S724) Recombinant Rabbit Monoclonal Antibody



Catalog #: 3345

Aliases

ERN1; Endoplasmic Reticulum To Nucleus Signaling 1; IRE1; Serine/Threonine-Protein Kinase/Endoribonuclease IRE1; IRE1P; Inositol-Requiring Protein 1; Inositol-Requiring Enzyme 1; ER To Nucleus Signalling 1; Ire1-Alpha; HIRE1p; IRE1a; Endoplasmic Reticulum-To-Nucleus Signaling 1; Protein Kinase/Endoribonuclease; Inositol-Requiring 1; EC 2.7.11

Background

Gene Name: ERN1

NCBI Gene Entry: [2081](#)

UniProt Entry: [O75460](#)

Application Information

Molecular Weight: Predicted, 110 kDa; observed, 100 kDa

Clonality: Rabbit monoclonal antibody

Clone ID: 24GB5220

Species Reactivity: Human, mouse, rat

Applications Tested: Western blotting (WB), flow cytometry (FCM), immunocytochemistry (IC)

Immunogen

A synthesized peptide derived from human Phospho-IRE1 (S724)

Isotype

Rabbit IgG

Storage Buffer

Supplied in PBS (pH 7.4) containing 50% glycerol, and 0.02% sodium azide.

Storage

Store at -20 °C for one year.

Recommended Dilutions

Western Blotting (WB): 1:1,000-1:5,000

Flow Cytometry (FCM): 1:2,000

Immunocytochemistry (IC): 1:100-1:1,000

SUPPORT

SUPPORT@GENUINBIOTECH.COM
TEL: +1-540-855-7041

ORDERS

SALES@GENUINBIOTECH.COM
FAX: +1-540-855-7041

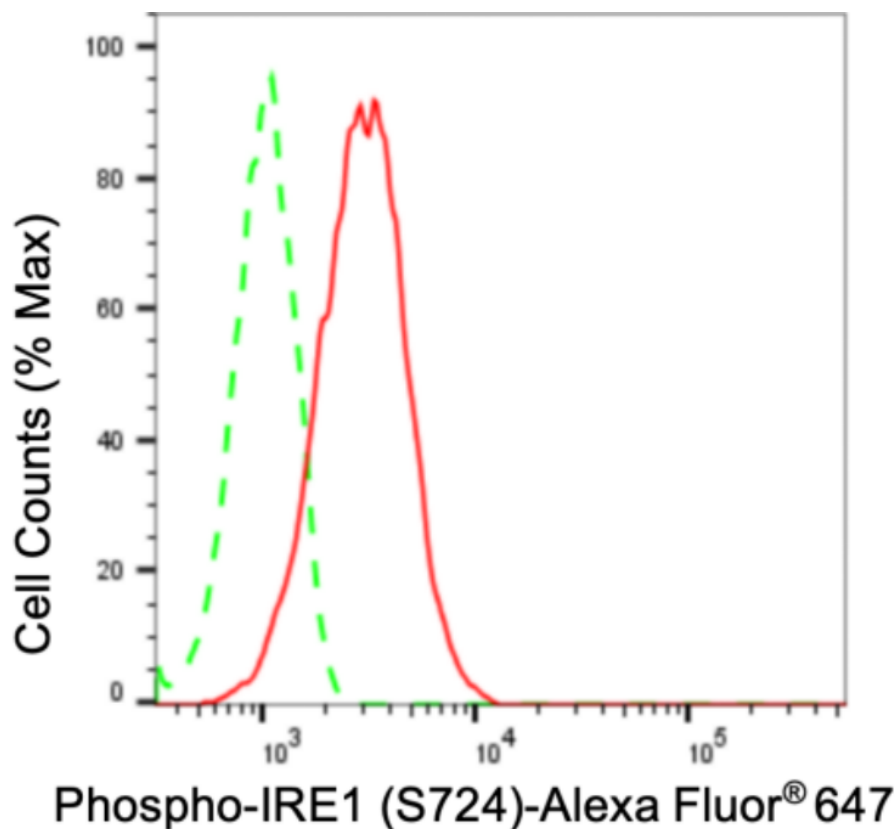
WWW.GENUINBIOTECH.COM

Anti-Phospho-IRE1 (S724) Recombinant Rabbit Monoclonal Antibody

PAGE 2

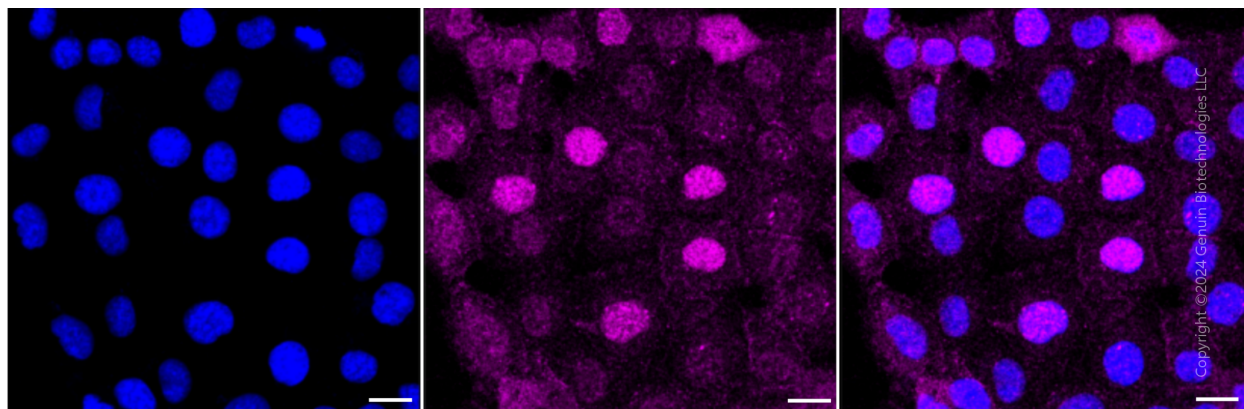
Note: This product is for research use only.

Validation Data



Copyright ©2024 Genuin Biotechnologies LLC

Flow cytometric analysis of phospho-IRE1 (S724) expression in HT-1080 cells using anti-phospho-IRE1 (S724) antibody (Cat#3345, 1:2,000). Green, isotype control; red, phospho-IRE1 (S724).



Immunocytochemical staining of HT-1080 cells with anti-Phospho-IRE1 (S724) antibody (Cat#3345, 1:1,000). Nuclei were stained blue with DAPI; Phospho-IRE1 (S724) was stained magenta with Alexa Fluor® 647. Images were taken using Leica stellaris 5. Protein abundance

SUPPORT

SUPPORT@GENUINBIOTECH.COM
TEL: +1-540-855-7041

ORDERS

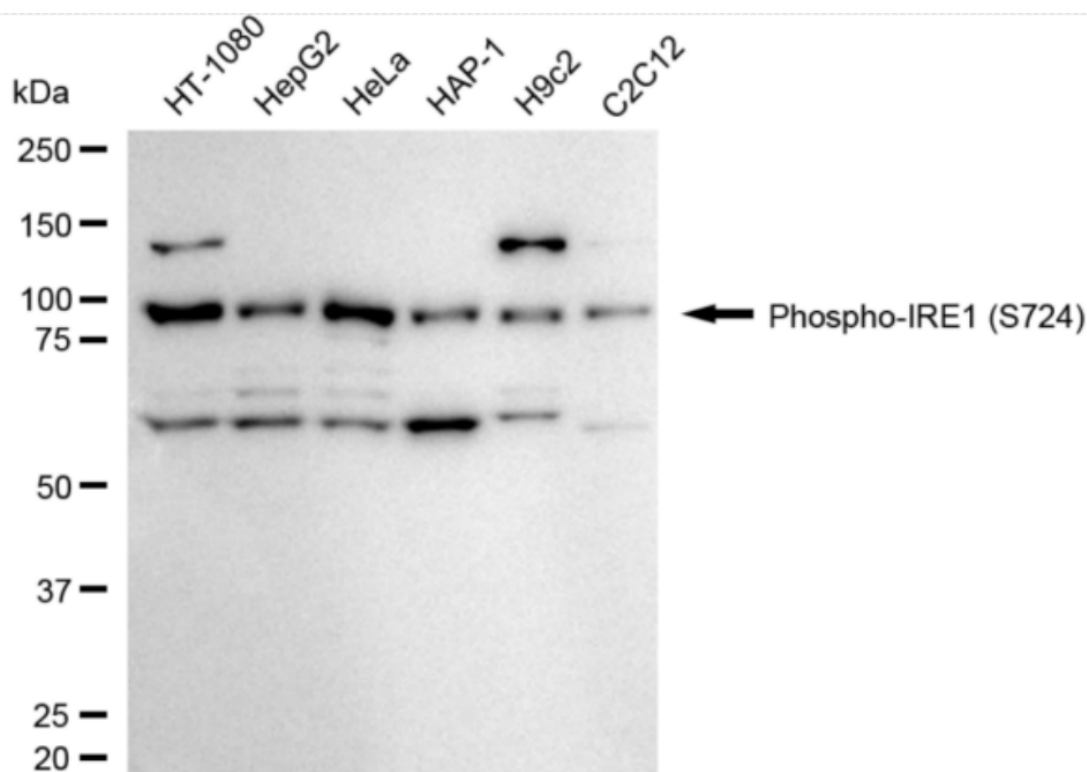
SALES@GENUINBIOTECH.COM
FAX: +1-540-855-7041

WWW.GENUINBIOTECH.COM

Anti-Phospho-IRE1 (S724) Recombinant Rabbit Monoclonal Antibody

PAGE 3

based on laser Intensity and smart gain: Medium. Scale bar: 20 μ m.



Copyright ©2024 Genuin Biotechnologies LLC

Western blotting analysis using anti-phospho-IRE1 (S724) antibody (Cat#3345). Total cell lysates (30 μ g) from various cell lines were loaded and separated by SDS-PAGE. The blot was incubated with anti-phospho-IRE1 (S724) antibody (Cat#3345, 1:5,000) and HRP-conjugated goat anti-rabbit secondary antibody (Cat#201, 1:20,000) respectively. Image was developed using FeQ™ ECL Substrate Kit (Cat#226).

SUPPORT

SUPPORT@GENUINBIOTECH.COM
TEL: +1-540-855-7041

ORDERS

SALES@GENUINBIOTECH.COM
FAX: +1-540-855-7041

WWW.GENUINBIOTECH.COM