

Anti-Thymidine Kinase 1 Recombinant Rabbit Monoclonal Antibody



Catalog #: 3347

Aliases

TK1; Thymidine Kinase 1; Thymidine Kinase, Cytosolic; Cytosolic Thymidine Kinase; EC 2.7.1.21; Epididymis Secretory Sperm Binding Protein; Thymidine Kinase 1, Soluble; TK2

Background

Gene Name: TK1

NCBI Gene Entry: [7083](#)

UniProt Entry: [P04183](#)

Application Information

Molecular Weight: Predicted, 25 kDa; observed, 25 kDa

Clonality: Rabbit monoclonal antibody

Clone ID: 24GB5230

Species Reactivity: Human

Applications Tested: Western blotting (WB), immunocytochemistry (IC), flow cytometry (FCM)

Immunogen

A synthesized peptide derived from human Thymidine Kinase 1

Isotype

Rabbit IgG

Storage Buffer

Supplied in PBS (pH 7.4) containing 50% glycerol, and 0.02% sodium azide.

Storage

Store at -20 °C for one year.

Recommended Dilutions

Western Blotting (WB): 1:1,000-1:5,000

Immunocytochemistry (IC): 1:100-1:1,000

Flow Cytometry (FCM): 1:2,000

Note: This product is for research use only.

Validation Data

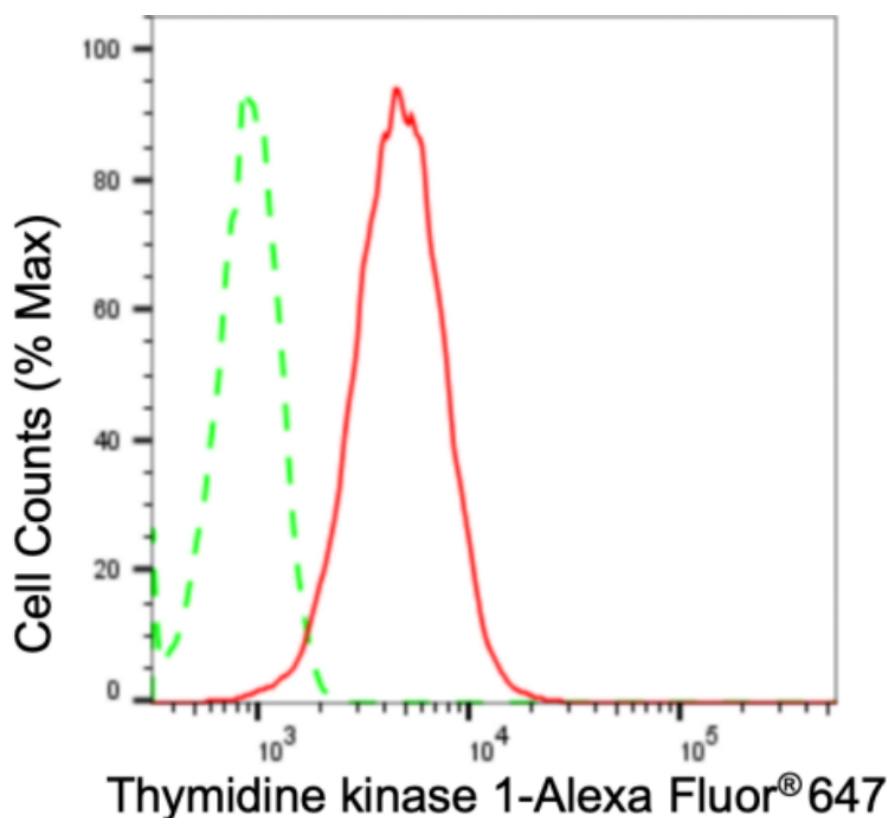
SUPPORT

SUPPORT@GENUINBIOTECH.COM
TEL: +1-540-855-7041

ORDERS

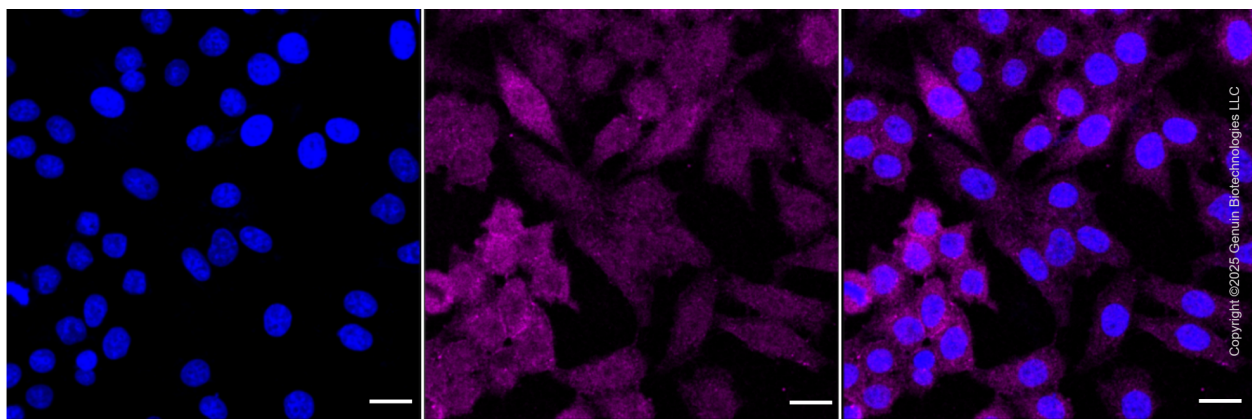
SALES@GENUINBIOTECH.COM
FAX: +1-540-855-7041

WWW.GENUINBIOTECH.COM

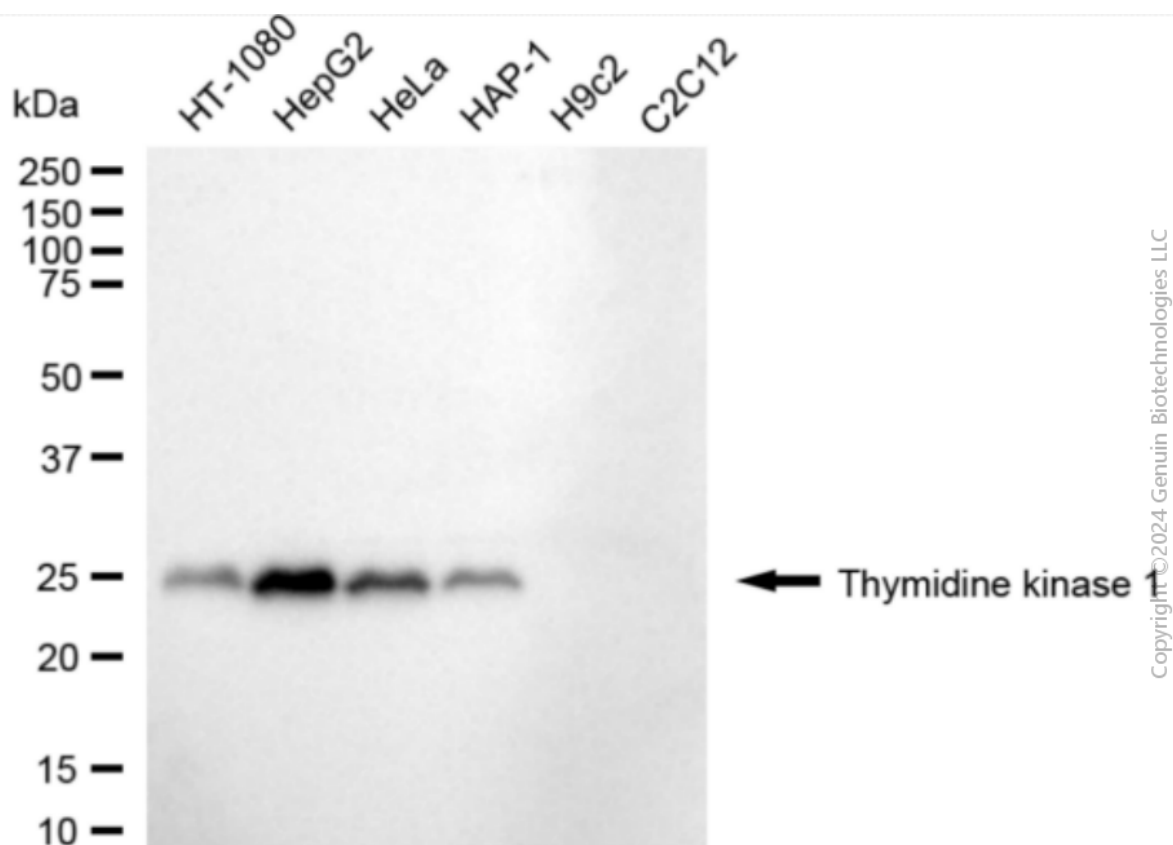


Copyright ©2024 Genuin Biotechnologies LLC

Flow cytometric analysis of thymidine kinase 1 expression in HepG2 cells using anti-thymidine kinase 1 antibody (Cat#3347, 1:2,000). Green, isotype control; red, thymidine kinase 1.



Immunocytochemical staining of HepG2 cells with anti-Thymidine kinase 1 antibody (Cat#3347, 1:1,000) . Nuclei were stained blue with DAPI; Thymidine kinase 1 was stained magenta with Alexa Fluor® 647. Images were taken using Leica stellaris 5. Protein abundance based on laser Intensity and smart gain: Medium. Scale bar: 20 μ m.



Western blotting analysis using anti-thymidine kinase 1 antibody (Cat#3347). Total cell lysates (30 μ g) from various cell lines were loaded and separated by SDS-PAGE. The blot was incubated with anti-thymidine kinase 1 antibody (Cat#3347, 1:5,000) and HRP-conjugated goat anti-rabbit secondary antibody (Cat#201, 1:20,000) respectively. Image was developed using NaQ™ ECL Substrate Kit (Cat#716).